

16-Bit Registered Transceivers

Features

- I_{off} supports partial-power-down mode operation
- Edge-rate control circuitry for significantly improved noise characteristics
- Typical output skew < 250 ps
- ESD > 2000V
- TSSOP (19.6-mil pitch) and SSOP (25-mil pitch) packages
- Industrial temperature range of -40°C to $+85^{\circ}\text{C}$
- $V_{CC} = 5\text{V} \pm 10\%$

CY74FCT16652T Features:

- 64 mA sink current, 32 mA source current
- Typical V_{OLP} (ground bounce) < 1.0V at $V_{CC} = 5\text{V}$, $T_A = 25^{\circ}\text{C}$

CY74FCT162652T Features:

- Balanced 24 mA output drivers
- Reduced system switching noise
- Typical V_{OLP} (ground bounce) < 0.6V at $V_{CC} = 5\text{V}$, $T_A = 25^{\circ}\text{C}$

Functional Description

These 16-bit, high-speed, low-power, registered transceivers that are organized as two independent 8-bit bus transceivers with three-state D-type registers and control circuitry arranged for multiplexed transmission of data directly from the input bus or from the internal storage registers. OEAB and OEBA control pins are provided to control the transceiver functions. SAB and SBA control pins are provided to select either real-time or stored data transfer.

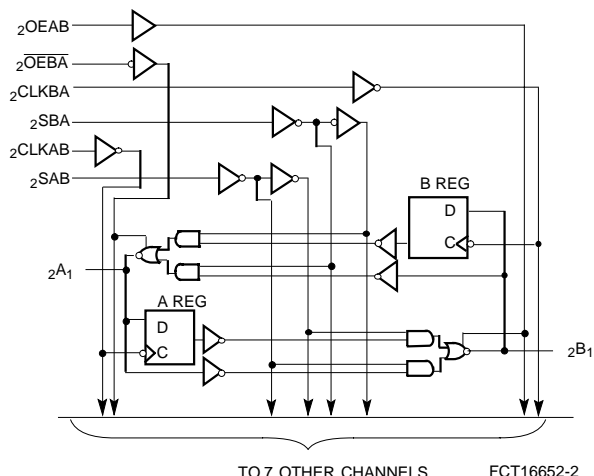
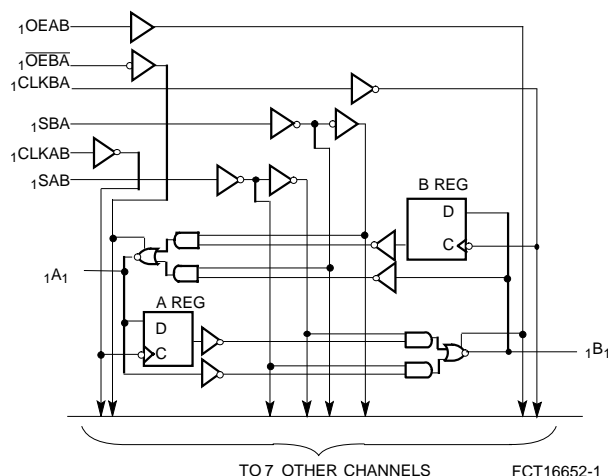
Data on the A or B data bus, or both, can be stored in the internal D flip-flops by LOW-to-HIGH transitions at the appropriate clock pins (CLKAB or CLKBA), regardless of the select or enable control pins. When SAB and SBA are in the real-time transfer mode, it is also possible to store data without using the internal D-type flip-flops by simultaneously enabling OEAB and OEBA. In this configuration, each output reinforces its input. Thus, when all other data sources to the two sets of bus lines are at high impedance, each set of bus lines will remain at its last state.

This device is fully specified for partial-power-down applications using I_{off} . The I_{off} circuitry disables the outputs, preventing damaging current backflow through the device when it is powered down.

The CY74FCT16652T is ideally suited for driving high-capacitance loads and low-impedance backplanes.

The CY74FCT162652T has 24-mA balanced output drivers with current-limiting resistors in the outputs. This reduces the need for external terminating resistors and provides for minimal undershoot and reduced ground bounce. The CY74FCT162652T is ideal for driving transmission lines.

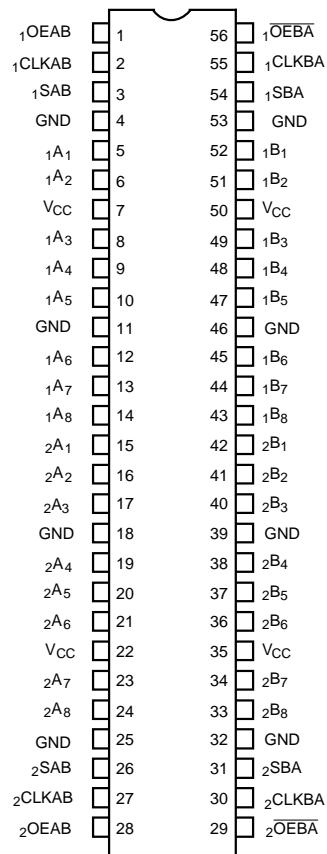
Logic Block Diagrams



Pin Configuration

SSOP/TSSOP

Top View



FCT16652-3

Pin Description

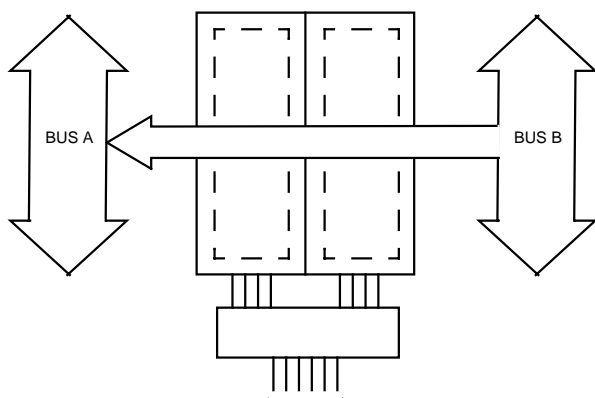
| Name | Description |
|--------------|---|
| A | Data Register A Inputs Data Register B Outputs |
| B | Data Register B Inputs Data Register A Outputs |
| CLKAB, CLKBA | Clock Pulse Inputs |
| SAB, SBA | Output Data Source Select Inputs |
| OEAB, OEBA | Output Enable Inputs |

Function Table^[1]

| Inputs | | | | | | Data I/O ^[2] | | Operation or Function |
|--------|--------|-------------|-------------|-----------------------|-----------------------|----------------------------|--------------------------------------|--|
| OEAB | OEBA | CLKAB | CLKBA | SAB | SBA | A | B | |
| L L | H H | H or L ┐ | H or L ┐ | X X | X X | Input | Input | Isolation Store A and B Data |
| X H | H H | ┐ ┐ | H or L ┐ | X X ^[3] | X X | Input Input | Unspecified ^[2] Output | Store A, Hold B Store A in Both Registers |
| L L | X L | H or L ┐ | ┐ ┐ | X X | X X ^[3] | Unspecified ^[2] | Input Input | Hold A, Store B Store B in both Registers |
| L L | L L | X X | X H or L | X X | L H | Output | Input | Real Time B Data to A Bus Stored B Data to A Bus |
| H H | H H | X H or L | X X | L H | X X | Input | Output | Real Time A Data to B Bus Stored A Data to B Bus |
| H | L | H or L | H or L | H | H | Output | Output | Stored A Data to B Bus and Stored B Data to A Bus |

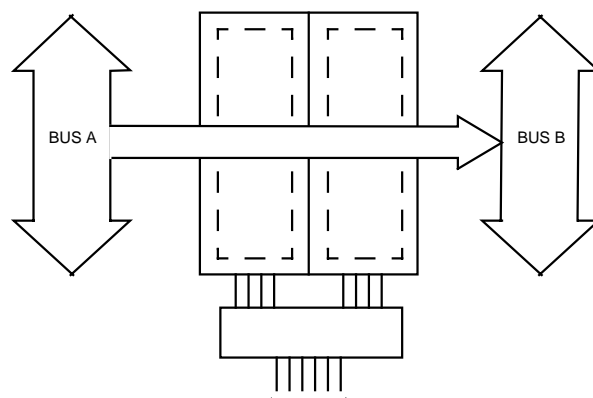
Notes:

1. H = HIGH Voltage Level
L = LOW Voltage Level
X = Don't Care
┐ = LOW-to-HIGH Transition
2. The data output functions may be enabled or disabled by various signals at the OEAB or OEBA inputs. Data input functions are always enabled, i.e., data at the bus pins will be stored on every LOW-to-HIGH transition on the clock inputs.
3. Select control=L; clocks can occur simultaneously.
Select control=H; clocks must be staggered to load both registers.



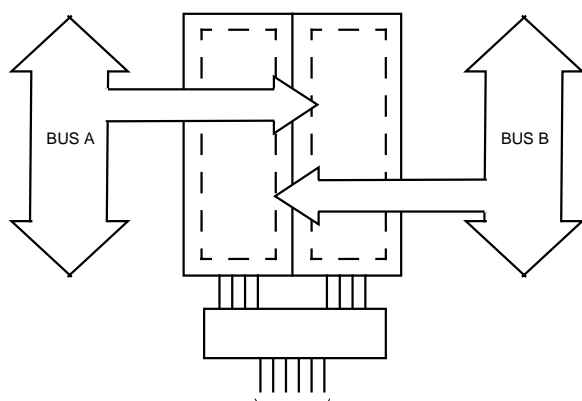
OEAB L OEBA L CLKAB X CLKBA X SAB X SBA L

**Real-Time Transfer
Bus B to Bus A**



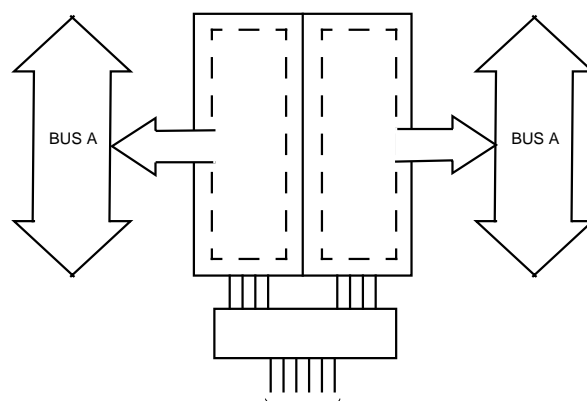
OEAB H OEBA L CLKAB X CLKBA X SAB L SBA X

**Real-Time Transfer
Bus A to Bus B**



OEAB X L L OEBA H X H CLKAB X CLKBA X SAB X X X SBA X X X

**Storage from
A and/or B**



OEAB H OEBA L CLKAB H or L CLKBA H or L SAB H SBA H

**Transfer Stored Data
to A and/or B**

Maximum Ratings^[4]

(Above which the useful life may be impaired. For user guidelines, not tested.)

Storage TemperatureCom'l -55°C to +125°C

Ambient Temperature with
Power AppliedCom'l -55°C to +125°C

DC Input Voltage-0.5V to +7.0V

DC Output Voltage-0.5V to +7.0V

DC Output Current
(Maximum Sink Current/Pin)-60 to +120 mA

Power Dissipation 1.0W

Static Discharge Voltage.....>2001V
(per MIL-STD-883, Method 3015)

Operating Range

| Range | Ambient Temperature | V _{CC} |
|------------|---------------------|-----------------|
| Industrial | -40°C to +85°C | 5V ± 10% |

Note:

- Stresses greater than those listed under Maximum Ratings may cause permanent damage to the device. This is a stress rating only and functional operation of the device at these or any other conditions above those indicated in the operational sections of this specification is not implied. Exposure to absolute maximum rating conditions for extended periods may affect reliability.

DC Electrical Characteristics Over the Operating Range

| Parameter | Description | Test Conditions ^[5] | Min. | Typ. ^[6] | Max. | Unit |
|------------------|--|--|------|---------------------|------|------|
| V _{IH} | Input HIGH Voltage | Logic HIGH Level | 2.0 | | | V |
| V _{IL} | Input LOW Voltage | Logic LOW Level | | | 0.8 | V |
| V _H | Input Hysteresis | | | 100 | | mV |
| V _{IK} | Input Clamp Diode Voltage | V _{CC} =Min., I _{IN} =−18 mA | | −0.7 | −1.2 | V |
| I _{IH} | Input HIGH Current | V _{CC} =Max., V _I =V _{CC} | | | ±1 | μA |
| I _{IL} | Input LOW Current | V _{CC} =Max., V _I =GND | | | ±1 | μA |
| I _{OZH} | High Impedance Output Current (Three-State Output pins) | V _{CC} =Max., V _{OUT} =2.7V | | | ±1 | μA |
| I _{OZL} | High Impedance Output Current (Three-State Output pins) | V _{CC} =Max., V _{OUT} =0.5V | | | ±1 | μA |
| I _{OS} | Short Circuit Current ^[8] | V _{CC} =Max., V _{OUT} =GND | −80 | −140 | −200 | mA |
| I _O | Output Drive Current ^[8] | V _{CC} =Max., V _{OUT} =2.5V | −50 | | −180 | mA |
| I _{OFF} | Power-Off Disable | V _{CC} =0V, V _{OUT} ≤4.5V ^[7] | | | ±1 | μA |

Output Drive Characteristics for CY74FCT16652T

| Parameter | Description | Test Conditions ^[5] | Min. | Typ. ^[6] | Max. | Unit |
|-----------------|---------------------|--|------|---------------------|------|------|
| V _{OH} | Output HIGH Voltage | V _{CC} =Min., I _{OH} =−3 mA | 2.5 | 3.5 | | V |
| | | V _{CC} =Min., I _{OH} =−15 mA | 2.4 | 3.5 | | |
| | | V _{CC} =Min., I _{OH} =−32 mA | 2.0 | 3.0 | | |
| V _{OL} | Output LOW Voltage | V _{CC} =Min., I _{OL} =64 mA | | 0.2 | 0.55 | V |

Output Drive Characteristics for CY74FCT162652T

| Parameter | Description | Test Conditions ^[5] | Min. | Typ. ^[6] | Max. | Unit |
|------------------|------------------------------------|---|------|---------------------|------|------|
| I _{ODL} | Output LOW Current ^[8] | V _{CC} =5V, V _{IN} =V _{IH} or V _{IL} , V _{OUT} =1.5V | 60 | 115 | 150 | mA |
| I _{ODH} | Output HIGH Current ^[8] | V _{CC} =5V, V _{IN} =V _{IH} or V _{IL} , V _{OUT} =1.5V | −60 | −115 | −150 | mA |
| V _{OH} | Output HIGH Voltage | V _{CC} =Min., I _{OH} =−24 mA | 2.4 | 3.3 | | V |
| V _{OL} | Output LOW Voltage | V _{CC} =Min., I _{OL} =24 mA | | 0.3 | 0.55 | V |

Capacitance (T_A = +25°C, f = 1.0 MHz)

| Parameter | Description ^[10] | Test Conditions | Typ. | Max. | Unit |
|------------------|-----------------------------|-----------------------|------|------|------|
| C _{IN} | Input Capacitance | V _{IN} = 0V | 4.5 | 6.0 | pF |
| C _{OUT} | Output Capacitance | V _{OUT} = 0V | 5.5 | 8.0 | pF |

Notes:

- For conditions shown as Max. or Min., use appropriate value specified under Electrical Characteristics for the applicable device type.
- Typical values are at V_{CC}=5.0V, +25°C ambient.
- Tested at T_A= +25°C.
- Not more than one output should be tested at one time. Duration of the test should not exceed one second.
- Duration of the condition cannot exceed one second.
- This parameter is measured at characterization but not tested.

Power Supply Characteristics

| Param. | Description | Test Conditions ^[11] | | Min. | Typ. ^[12] | Max. | Unit |
|-----------------|---|--|---|------|----------------------|----------------------|---------------|
| I_{CC} | Quiescent Power Supply Current | $V_{CC} = \text{Max.}$ | $V_{IN} \leq 0.2V$ $V_{IN} \geq V_{CC} - 0.2V$ | — | 5 | 500 | μA |
| ΔI_{CC} | Quiescent Power Supply Current TTL Inputs HIGH | $V_{CC} = \text{Max.}$ $V_{IN} = 3.4V$ ^[13] | | — | 0.5 | 1.5 | mA |
| I_{CCD} | Dynamic Power Supply Current ^[14] | $V_{CC} = \text{Max.}$ Outputs Open $OEAB = \overline{OEAB} = GND$ One Input Toggling 50% Duty Cycle | $V_{IN} = V_{CC}$ or $V_{IN} = GND$ | — | 75 | 120 | $\mu A / MHz$ |
| I_C | Total Power Supply Current ^[15] | $V_{CC} = \text{Max.}$ Outputs Open $f_0 = 10 \text{ MHz (CLKBA)}$ 50% Duty Cycle $OEAB = \overline{OEAB} = GND$ One-Bit Toggling $f_1 = 5 \text{ MHz}$ 50% Duty Cycle | $V_{IN} = V_{CC}$ or $V_{IN} = GND$ | — | 0.8 | 1.7 | mA |
| | | | $V_{IN} = 3.4V$ or $V_{IN} = GND$ | — | 1.3 | 3.2 | mA |
| | | $V_{CC} = \text{Max.}$ Outputs Open $f_0 = 10 \text{ MHz (CLKBA)}$ 50% Duty Cycle $OEAB = \overline{OEAB} = GND$ Sixteen Bits Toggling $f_1 = 2.5 \text{ MHz}$ 50% Duty Cycle | $V_{IN} = V_{CC}$ or $V_{IN} = GND$ | — | 3.8 | 6.5 ^[16] | mA |
| | | | $V_{IN} = 3.4V$ or $V_{IN} = GND$ | — | 8.3 | 20.0 ^[16] | mA |

Notes:

11. For conditions shown as Max. or Min., use appropriate value specified under Electrical Characteristics for the applicable device type.
12. Typical values are at $V_{CC} = 5.0V$ +25° ambient.
13. Per TTL driven input ($V_{IN} = 3.4V$); all other inputs at V_{CC} or GND.
14. This parameter is not directly testable, but is derived for use in Total Power Supply calculations.
15. $I_C = I_{QUIESCENT} + I_{INPUTS} + I_{DYNAMIC}$
 $I_C = I_{CC} + \Delta I_{CC} D_H N_T + I_{CCD} (f_0/2 + f_1 N_1)$
 I_{CC} = Quiescent Current with CMOS input levels
 ΔI_{CC} = Power Supply Current for a TTL HIGH input ($V_{IN} = 3.4V$)
 D_H = Duty Cycle for TTL inputs HIGH
 N_T = Number of TTL inputs at D_H
 I_{CCD} = Dynamic Current caused by an input transition pair (HLH or LHL)
 f_0 = Clock frequency for registered devices, otherwise zero
 f_1 = Input signal frequency
 N_1 = Number of inputs changing at f_1
All currents are in milliamps and all frequencies are in megahertz.
16. Values for these conditions are examples of the I_{CC} formula. These limits are specified but not tested.

Switching Characteristics Over the Operating Range^[17]

| Parameter | Description | CY74FCT16652AT CY74FCT162652AT | | Unit | Fig. No. ^[18] |
|--------------------------------------|---|-----------------------------------|------|------|--------------------------|
| | | Min. | Max. | | |
| t _{PLH} t _{PHL} | Propagation Delay Bus to Bus | 1.5 | 6.3 | ns | 1, 3 |
| t _{PZH} t _{PHL} | Output Enable Time OEAB or $\overline{\text{OEBA}}$ to Bus | 1.5 | 9.8 | ns | 1, 7, 8 |
| t _{PHZ} t _{PLZ} | Output Disable Time OEAB or $\overline{\text{OEBA}}$ to Bus | 1.5 | 6.3 | ns | 1, 7, 8 |
| t _{PLH} t _{PHL} | Propagation Delay Clock to Bus | 1.5 | 6.3 | ns | 1, 5 |
| t _{PLH} t _{PHL} | Propagation Delay SBA or SAB to Bus | 1.5 | 7.7 | ns | 1, 5 |
| t _{SU} | Set-Up time HIGH or LOW Bus to Clock | 2.0 | — | ns | 4 |
| t _H | Hold Time HIGH or LOW Bus to Clock | 1.5 | — | ns | 4 |
| t _W | Clock Pulse Width HIGH or LOW | 5.0 | — | ns | 5 |
| t _{SK(O)} | Output Skew ^[19] | — | 0.5 | ns | |

| Parameter | Description | CY74FCT16652CT CY74FCT162652CT | | Unit | Fig. No. ^[18] |
|--------------------------------------|--|-----------------------------------|------|------|--------------------------|
| | | Min. | Max. | | |
| t _{PLH} t _{PHL} | Propagation Delay Bus to Bus | 1.5 | 5.4 | ns | 1, 3 |
| t _{PZH} t _{PHL} | Output Enable Time OEAB or $\overline{\text{OEBA}}$ to Bus | 1.5 | 7.8 | ns | 1, 7, 8 |
| t _{PHZ} t _{PLZ} | Output Disable Time OEAB or $\overline{\text{OEBA}}$ to Bus | 1.5 | 6.3 | ns | 1, 7, 8 |
| t _{PLH} t _{PHL} | Propagation Delay Clock to Bus | 1.5 | 5.7 | ns | 1, 5 |
| t _{PLH} t _{PHL} | Propagation Delay SBA or SAB to Bus | 1.5 | 6.2 | ns | 1, 5 |
| t _{SU} | Set-Up Time HIGH or LOW Bus to Clock | 2.0 | — | ns | 4 |
| t _H | Hold Time HIGH or LOW Bus to Clock | 1.5 | — | ns | 4 |
| t _W | Clock Pulse Width HIGH or LOW | 5.0 | — | ns | 5 |
| t _{SK(O)} | Output Skew ^[19] | — | 0.5 | ns | |

Notes:

17. Minimum limits are specified, but not tested, on propagation delays.

18. See "Parameter Measurement Information" in the General Information section.

19. Skew between any two outputs of the same package switching in the same direction. This parameter ensured by design.

Ordering Information CY74FCT16652

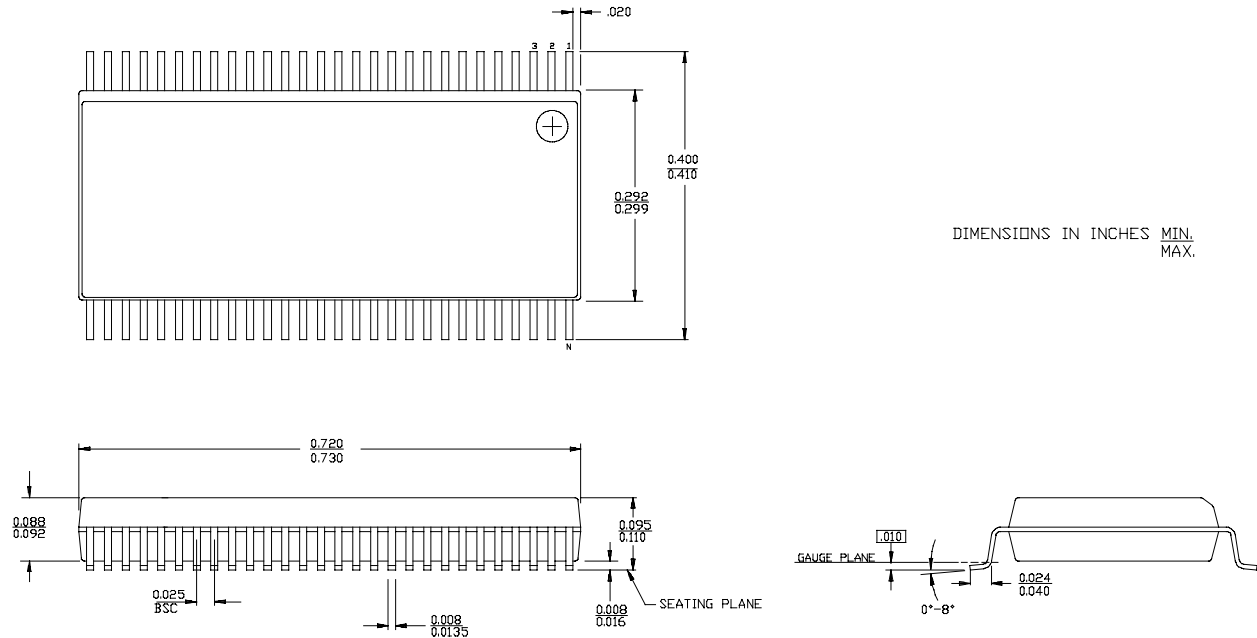
| Speed (ns) | Ordering Code | Package Name | Package Type | Operating Range |
|------------|------------------------|--------------|------------------------|-----------------|
| 5.4 | CY74FCT16652CTPVC/PVCT | O56 | 56-Lead (300-Mil) SSOP | Industrial |
| 6.3 | CY74FCT16652ATPVC/PVCT | O56 | 56-Lead (300-Mil) SSOP | Industrial |

Ordering Information CY74FCT162652

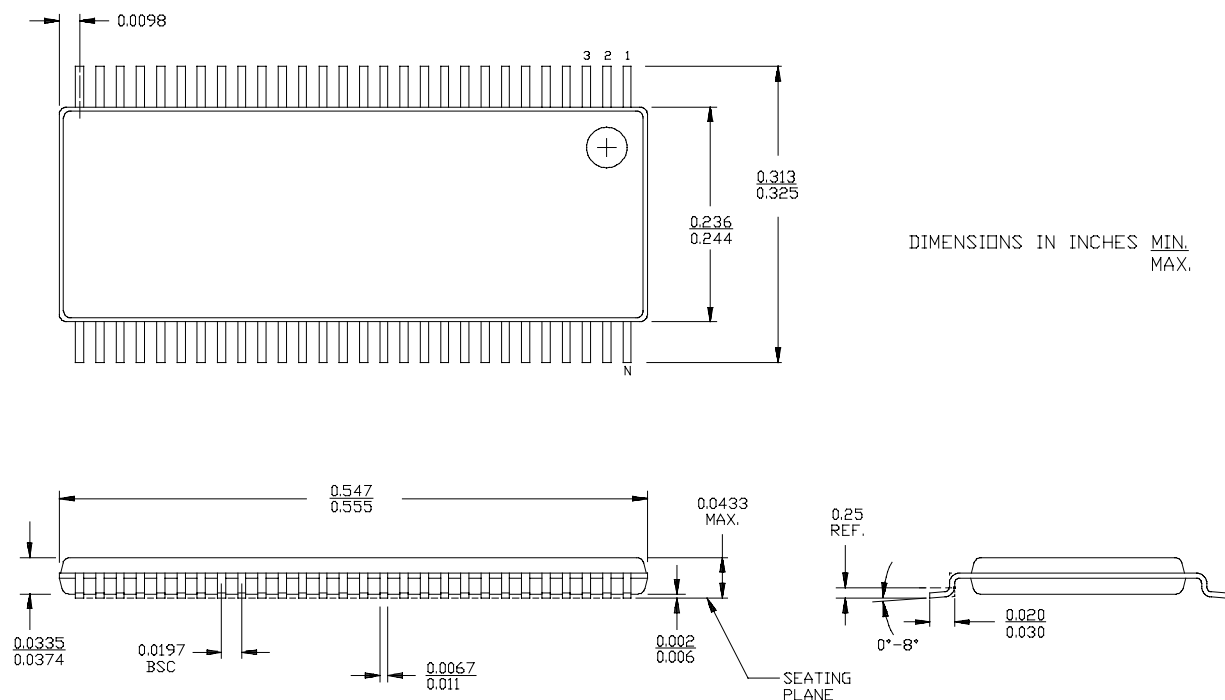
| Speed (ns) | Ordering Code | Package Name | Package Type | Operating Range |
|------------|--------------------|--------------|-------------------------|-----------------|
| 5.4 | 74FCT162652CTPACT | Z56 | 56-Lead (240-Mil) TSSOP | Industrial |
| | CY74FCT162652CTPVC | O56 | 56-Lead (300-Mil) SSOP | |
| | 74FCT162652CTPVCT | O56 | 56-Lead (300-Mil) SSOP | |
| 6.3 | CY74FCT162652ATPVC | O56 | 56-Lead (300-Mil) SSOP | Industrial |
| | 74FCT162652ATPVCT | O56 | 56-Lead (300-Mil) SSOP | |

Package Diagrams

56-Lead Shrunk Small Outline Package O56



56-Lead Thin Shrunk Small Outline Package Z56



PACKAGING INFORMATION

| Orderable Device | Status (1) | Package Type | Package Drawing | Pins | Package Qty | Eco Plan (2) | Lead/Ball Finish | MSL Peak Temp (3) | Op Temp (°C) | Top-Side Markings (4) | Samples |
|--------------------|---------------|--------------|--------------------|------|----------------|----------------------------|------------------|----------------------|--------------|--------------------------|-------------------------|
| 74FCT162652ATPVC4 | ACTIVE | SSOP | DL | 56 | 20 | Green (RoHS & no Sb/Br) | CU NIPDAU | Level-1-260C-UNLIM | -40 to 85 | FCT162652A | Samples |
| 74FCT162652ATPVCT | ACTIVE | SSOP | DL | 56 | 1000 | Green (RoHS & no Sb/Br) | CU NIPDAU | Level-1-260C-UNLIM | -40 to 85 | FCT162652A | Samples |
| 74FCT162652CTPACT | ACTIVE | TSSOP | DGG | 56 | 2000 | Green (RoHS & no Sb/Br) | CU NIPDAU | Level-1-260C-UNLIM | -40 to 85 | FCT162652C | Samples |
| 74FCT162652CTPVC4 | ACTIVE | SSOP | DL | 56 | 20 | Green (RoHS & no Sb/Br) | CU NIPDAU | Level-1-260C-UNLIM | -40 to 85 | FCT162652C | Samples |
| 74FCT162652ETPACT | OBSOLETE | TSSOP | DGG | 56 | | TBD | Call TI | Call TI | -40 to 85 | | |
| 74FCT162652ETPVCT | OBSOLETE | SSOP | DL | 56 | | TBD | Call TI | Call TI | -40 to 85 | | |
| 74FCT16652ATPVC4 | ACTIVE | SSOP | DL | 56 | 20 | Green (RoHS & no Sb/Br) | CU NIPDAU | Level-1-260C-UNLIM | -40 to 85 | FCT16652A | Samples |
| 74FCT16652ATPVCTG4 | ACTIVE | SSOP | DL | 56 | 1000 | Green (RoHS & no Sb/Br) | CU NIPDAU | Level-1-260C-UNLIM | -40 to 85 | FCT16652A | Samples |
| 74FCT16652CTPVC4 | ACTIVE | SSOP | DL | 56 | 20 | Green (RoHS & no Sb/Br) | CU NIPDAU | Level-1-260C-UNLIM | -40 to 85 | FCT16652C | Samples |
| 74FCT16652CTPVCTG4 | ACTIVE | SSOP | DL | 56 | 1000 | Green (RoHS & no Sb/Br) | CU NIPDAU | Level-1-260C-UNLIM | -40 to 85 | FCT16652C | Samples |
| CY74FCT162652ATPVC | ACTIVE | SSOP | DL | 56 | 20 | Green (RoHS & no Sb/Br) | CU NIPDAU | Level-1-260C-UNLIM | -40 to 85 | FCT162652A | Samples |
| CY74FCT162652CTPVC | ACTIVE | SSOP | DL | 56 | 20 | Green (RoHS & no Sb/Br) | CU NIPDAU | Level-1-260C-UNLIM | -40 to 85 | FCT162652C | Samples |
| CY74FCT162652ETPAC | OBSOLETE | TSSOP | DGG | 56 | | TBD | Call TI | Call TI | -40 to 85 | | |
| CY74FCT162652ETPVC | OBSOLETE | SSOP | DL | 56 | | TBD | Call TI | Call TI | -40 to 85 | | |
| CY74FCT16652ATPVC | ACTIVE | SSOP | DL | 56 | 20 | Green (RoHS & no Sb/Br) | CU NIPDAU | Level-1-260C-UNLIM | -40 to 85 | FCT16652A | Samples |
| CY74FCT16652ATPVCT | ACTIVE | SSOP | DL | 56 | 1000 | Green (RoHS & no Sb/Br) | CU NIPDAU | Level-1-260C-UNLIM | -40 to 85 | FCT16652A | Samples |
| CY74FCT16652CTPVC | ACTIVE | SSOP | DL | 56 | 20 | Green (RoHS & no Sb/Br) | CU NIPDAU | Level-1-260C-UNLIM | -40 to 85 | FCT16652C | Samples |
| CY74FCT16652CTPVCT | ACTIVE | SSOP | DL | 56 | 1000 | Green (RoHS & no Sb/Br) | CU NIPDAU | Level-1-260C-UNLIM | -40 to 85 | FCT16652C | Samples |
| CY74FCT16652ETPAC | OBSOLETE | TSSOP | DGG | 56 | | TBD | Call TI | Call TI | -40 to 85 | | |

| Orderable Device | Status (1) | Package Type | Package Drawing | Pins | Package Qty | Eco Plan (2) | Lead/Ball Finish | MSL Peak Temp (3) | Op Temp (°C) | Top-Side Markings (4) | Samples |
|--------------------|---------------|--------------|--------------------|------|----------------|----------------------------|------------------|----------------------|--------------|--------------------------|-------------------------|
| CY74FCT16652ETPACT | OBSOLETE | TSSOP | DGG | 56 | | TBD | Call TI | Call TI | -40 to 85 | | |
| CY74FCT16652ETPVC | OBSOLETE | SSOP | DL | 56 | | TBD | Call TI | Call TI | -40 to 85 | | |
| CY74FCT16652ETPVCT | OBSOLETE | SSOP | DL | 56 | | TBD | Call TI | Call TI | -40 to 85 | | |
| FCT162652ATPVCTG4 | ACTIVE | SSOP | DL | 56 | 1000 | Green (RoHS & no Sb/Br) | CU NIPDAU | Level-1-260C-UNLIM | -40 to 85 | FCT162652A | Samples |
| FCT162652CTPACTE4 | ACTIVE | TSSOP | DGG | 56 | 2000 | Green (RoHS & no Sb/Br) | CU NIPDAU | Level-1-260C-UNLIM | -40 to 85 | FCT162652C | Samples |
| FCT162652CTPACTG4 | ACTIVE | TSSOP | DGG | 56 | 2000 | Green (RoHS & no Sb/Br) | CU NIPDAU | Level-1-260C-UNLIM | -40 to 85 | FCT162652C | Samples |

(1) The marketing status values are defined as follows:

ACTIVE: Product device recommended for new designs.

LIFEBUY: TI has announced that the device will be discontinued, and a lifetime-buy period is in effect.

NRND: Not recommended for new designs. Device is in production to support existing customers, but TI does not recommend using this part in a new design.

PREVIEW: Device has been announced but is not in production. Samples may or may not be available.

OBSOLETE: TI has discontinued the production of the device.

(2) Eco Plan - The planned eco-friendly classification: Pb-Free (RoHS), Pb-Free (RoHS Exempt), or Green (RoHS & no Sb/Br) - please check <http://www.ti.com/productcontent> for the latest availability information and additional product content details.

TBD: The Pb-Free/Green conversion plan has not been defined.

Pb-Free (RoHS): TI's terms "Lead-Free" or "Pb-Free" mean semiconductor products that are compatible with the current RoHS requirements for all 6 substances, including the requirement that lead not exceed 0.1% by weight in homogeneous materials. Where designed to be soldered at high temperatures, TI Pb-Free products are suitable for use in specified lead-free processes.

Pb-Free (RoHS Exempt): This component has a RoHS exemption for either 1) lead-based flip-chip solder bumps used between the die and package, or 2) lead-based die adhesive used between the die and leadframe. The component is otherwise considered Pb-Free (RoHS compatible) as defined above.

Green (RoHS & no Sb/Br): TI defines "Green" to mean Pb-Free (RoHS compatible), and free of Bromine (Br) and Antimony (Sb) based flame retardants (Br or Sb do not exceed 0.1% by weight in homogeneous material)

(3) MSL, Peak Temp. -- The Moisture Sensitivity Level rating according to the JEDEC industry standard classifications, and peak solder temperature.

(4) Multiple Top-Side Markings will be inside parentheses. Only one Top-Side Marking contained in parentheses and separated by a "~" will appear on a device. If a line is indented then it is a continuation of the previous line and the two combined represent the entire Top-Side Marking for that device.

Important Information and Disclaimer: The information provided on this page represents TI's knowledge and belief as of the date that it is provided. TI bases its knowledge and belief on information provided by third parties, and makes no representation or warranty as to the accuracy of such information. Efforts are underway to better integrate information from third parties. TI has taken and continues to take reasonable steps to provide representative and accurate information but may not have conducted destructive testing or chemical analysis on incoming materials and chemicals. TI and TI suppliers consider certain information to be proprietary, and thus CAS numbers and other limited information may not be available for release.

In no event shall TI's liability arising out of such information exceed the total purchase price of the TI part(s) at issue in this document sold by TI to Customer on an annual basis.

TAPE AND REEL INFORMATION


*All dimensions are nominal

| Device | Package Type | Package Drawing | Pins | SPQ | Reel Diameter (mm) | Reel Width W1 (mm) | A0 (mm) | B0 (mm) | K0 (mm) | P1 (mm) | W (mm) | Pin1 Quadrant |
|--------------------|--------------|-----------------|------|------|--------------------|--------------------|---------|---------|---------|---------|--------|---------------|
| 74FCT162652ATPVCT | SSOP | DL | 56 | 1000 | 330.0 | 32.4 | 11.35 | 18.67 | 3.1 | 16.0 | 32.0 | Q1 |
| 74FCT162652CTPACT | TSSOP | DGG | 56 | 2000 | 330.0 | 24.4 | 8.6 | 15.6 | 1.8 | 12.0 | 24.0 | Q1 |
| CY74FCT16652ATPVCT | SSOP | DL | 56 | 1000 | 330.0 | 32.4 | 11.35 | 18.67 | 3.1 | 16.0 | 32.0 | Q1 |
| CY74FCT16652CTPVCT | SSOP | DL | 56 | 1000 | 330.0 | 32.4 | 11.35 | 18.67 | 3.1 | 16.0 | 32.0 | Q1 |

TAPE AND REEL BOX DIMENSIONS

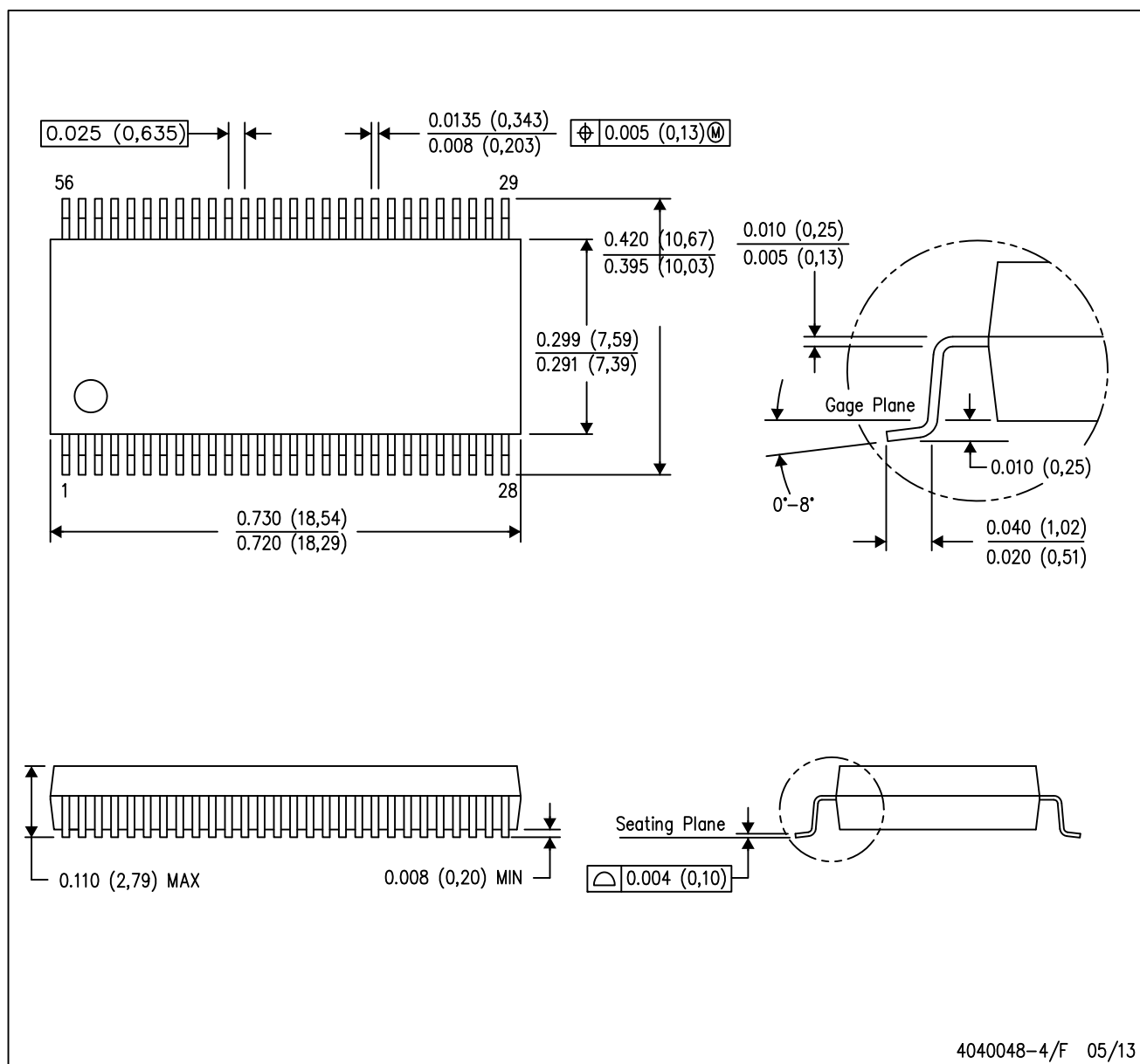


*All dimensions are nominal

| Device | Package Type | Package Drawing | Pins | SPQ | Length (mm) | Width (mm) | Height (mm) |
|--------------------|--------------|-----------------|------|------|-------------|------------|-------------|
| 74FCT162652ATPVCT | SSOP | DL | 56 | 1000 | 367.0 | 367.0 | 55.0 |
| 74FCT162652CTPACT | TSSOP | DGG | 56 | 2000 | 367.0 | 367.0 | 45.0 |
| CY74FCT16652ATPVCT | SSOP | DL | 56 | 1000 | 367.0 | 367.0 | 55.0 |
| CY74FCT16652CTPVCT | SSOP | DL | 56 | 1000 | 367.0 | 367.0 | 55.0 |

DL (R-PDSO-G56)

PLASTIC SMALL-OUTLINE PACKAGE



- NOTES:
- All linear dimensions are in inches (millimeters).
 - This drawing is subject to change without notice.
 - Body dimensions do not include mold flash or protrusion not to exceed 0.006 (0,15).
 - Falls within JEDEC MO-118

DGG (R-PDSO-G**)

PLASTIC SMALL-OUTLINE PACKAGE

48 PINS SHOWN



- NOTES: A. All linear dimensions are in millimeters.
 B. This drawing is subject to change without notice.
 C. Body dimensions do not include mold protrusion not to exceed 0,15.
 D. Falls within JEDEC MO-153

IMPORTANT NOTICE

Texas Instruments Incorporated and its subsidiaries (TI) reserve the right to make corrections, enhancements, improvements and other changes to its semiconductor products and services per JESD46, latest issue, and to discontinue any product or service per JESD48, latest issue. Buyers should obtain the latest relevant information before placing orders and should verify that such information is current and complete. All semiconductor products (also referred to herein as "components") are sold subject to TI's terms and conditions of sale supplied at the time of order acknowledgment.

TI warrants performance of its components to the specifications applicable at the time of sale, in accordance with the warranty in TI's terms and conditions of sale of semiconductor products. Testing and other quality control techniques are used to the extent TI deems necessary to support this warranty. Except where mandated by applicable law, testing of all parameters of each component is not necessarily performed.

TI assumes no liability for applications assistance or the design of Buyers' products. Buyers are responsible for their products and applications using TI components. To minimize the risks associated with Buyers' products and applications, Buyers should provide adequate design and operating safeguards.

TI does not warrant or represent that any license, either express or implied, is granted under any patent right, copyright, mask work right, or other intellectual property right relating to any combination, machine, or process in which TI components or services are used. Information published by TI regarding third-party products or services does not constitute a license to use such products or services or a warranty or endorsement thereof. Use of such information may require a license from a third party under the patents or other intellectual property of the third party, or a license from TI under the patents or other intellectual property of TI.

Reproduction of significant portions of TI information in TI data books or data sheets is permissible only if reproduction is without alteration and is accompanied by all associated warranties, conditions, limitations, and notices. TI is not responsible or liable for such altered documentation. Information of third parties may be subject to additional restrictions.

Resale of TI components or services with statements different from or beyond the parameters stated by TI for that component or service voids all express and any implied warranties for the associated TI component or service and is an unfair and deceptive business practice. TI is not responsible or liable for any such statements.

Buyer acknowledges and agrees that it is solely responsible for compliance with all legal, regulatory and safety-related requirements concerning its products, and any use of TI components in its applications, notwithstanding any applications-related information or support that may be provided by TI. Buyer represents and agrees that it has all the necessary expertise to create and implement safeguards which anticipate dangerous consequences of failures, monitor failures and their consequences, lessen the likelihood of failures that might cause harm and take appropriate remedial actions. Buyer will fully indemnify TI and its representatives against any damages arising out of the use of any TI components in safety-critical applications.

In some cases, TI components may be promoted specifically to facilitate safety-related applications. With such components, TI's goal is to help enable customers to design and create their own end-product solutions that meet applicable functional safety standards and requirements. Nonetheless, such components are subject to these terms.

No TI components are authorized for use in FDA Class III (or similar life-critical medical equipment) unless authorized officers of the parties have executed a special agreement specifically governing such use.

Only those TI components which TI has specifically designated as military grade or "enhanced plastic" are designed and intended for use in military/aerospace applications or environments. Buyer acknowledges and agrees that any military or aerospace use of TI components which have **not** been so designated is solely at the Buyer's risk, and that Buyer is solely responsible for compliance with all legal and regulatory requirements in connection with such use.

TI has specifically designated certain components as meeting ISO/TS16949 requirements, mainly for automotive use. In any case of use of non-designated products, TI will not be responsible for any failure to meet ISO/TS16949.

Products

| | |
|------------------------------|--|
| Audio | www.ti.com/audio |
| Amplifiers | amplifier.ti.com |
| Data Converters | dataconverter.ti.com |
| DLP® Products | www.dlp.com |
| DSP | dsp.ti.com |
| Clocks and Timers | www.ti.com/clocks |
| Interface | interface.ti.com |
| Logic | logic.ti.com |
| Power Mgmt | power.ti.com |
| Microcontrollers | microcontroller.ti.com |
| RFID | www.ti-rfid.com |
| OMAP Applications Processors | www.ti.com/omap |
| Wireless Connectivity | www.ti.com/wirelessconnectivity |

Applications

| | |
|-------------------------------|--|
| Automotive and Transportation | www.ti.com/automotive |
| Communications and Telecom | www.ti.com/communications |
| Computers and Peripherals | www.ti.com/computers |
| Consumer Electronics | www.ti.com/consumer-apps |
| Energy and Lighting | www.ti.com/energy |
| Industrial | www.ti.com/industrial |
| Medical | www.ti.com/medical |
| Security | www.ti.com/security |
| Space, Avionics and Defense | www.ti.com/space-avionics-defense |
| Video and Imaging | www.ti.com/video |

TI E2E Community

e2e.ti.com