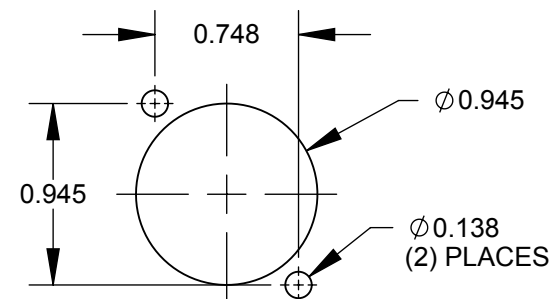
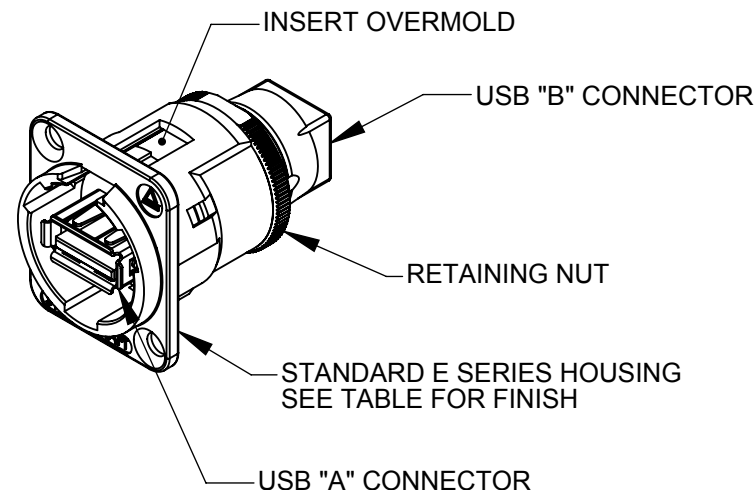
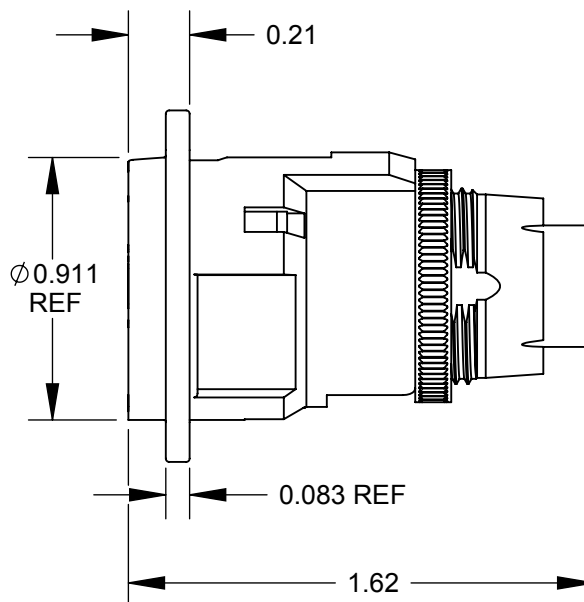


✓ $\phi 0.138$ THRU
 $\phi 0.230 \times 82^\circ$
 (2) PLACES
 REF



RECOMMENDED
 PANEL CUT-OUT

NOTES:

1. MATERIALS:
 INSERT OVERMOLD - THERMOPLASTIC, BLACK
 RETAINING NUT - BRASS, NICKEL PLATED
 HOUSING - ZINC ALLOY

2. THIS PRODUCT IS RoHS COMPLIANT.

PART NUMBER	HOUSING FINISH
EHUSBABX	NICKEL
EHUSBABBX	BLACK CHROME

CUSTOMER DRAWING

★ STAR SYMBOL DENOTES CRITICAL DIMENSION

UNLESS OTHERWISE SPECIFIED
 1. ALL DIMENSIONS IN INCHES
 - TWO PLACE DECIMALS ± 0.01
 - THREE PLACE DECIMALS ± 0.005
 - ANGLES $\pm 1^\circ$

THIS DRAWING DESCRIBES A DESIGN CONSIDERED PROPRIETARY IN NATURE, DEVELOPED AND MANUFACTURED BY SWITCHCRAFT INC. AND IS RELEASED ON A CONFIDENTIAL BASIS FOR IDENTIFICATION PURPOSES ONLY.

					<div>☆ STAR SYMBOL DENOTES CRITICAL DIMENSION</div>	THIS DRAWING DESCRIBES A DESIGN INVENTED OR OTHERWISE OBTAINED BY SWITCHCRAFT INC. AND IS RELEASED ON A CONFIDENTIAL BASIS FOR IDENTIFICATION PURPOSES ONLY.						
					<div>UNLESS OTHERWISE SPECIFIED</div> <div>1. ALL DIMENSIONS IN INCHES</div> <div>- TWO PLACE DECIMALS ±0.01</div> <div>- THREE PLACE DECIMALS ±0.005</div> <div>- ANGLES ±1°</div>	SIZE	WIDTH	MULT	LBS/M	TEMPER		
						FINISH			MATERIAL			
						SPEC No.			SPEC No.			
						FIRST USED ON		SCALE		<div>Switchcraft®</div>		
								1.5:1				
A	26076	7/15/06	RS	TJK		DATE DRAWN	BY	CHKD	APVD	SHEET 1 OF 1		
						5/5/09	RS	RS	TJK			
								5/5/09	7/15/09			
REV	ECO NUMBER	DATE	BY	APVD		NAME				PART No.		REV
					DO NOT SCALE DRAWING	E SERIES CONNECTOR, USB A FEMALE TO B FEMALE, RoHS				EHUSBAB_X SERIES		A

DO NOT SCALE DRAWING

SolidWorks CAD File

