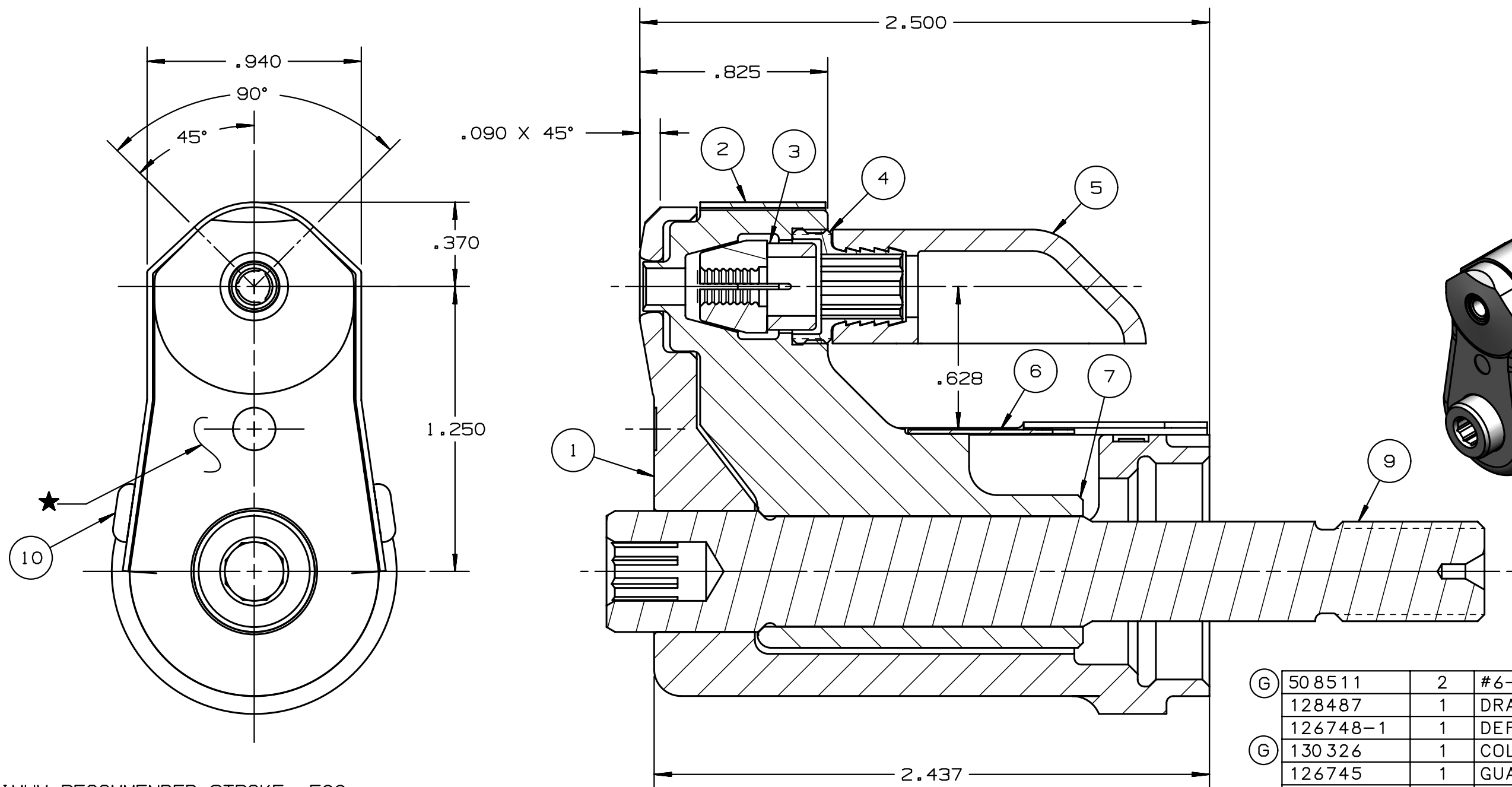


REV	DESCRIPTION	DET	DATE
E	ITEM 3, 130051 WAS 128076	EL	11/09/11
F	128494 WAS 128604 ADDED 128487	JJC	07/13/12
G	ADDED 580511, 130322 WAS 126746, 130326 WAS 126745; ADDED VIEW	NDG	06/03/13

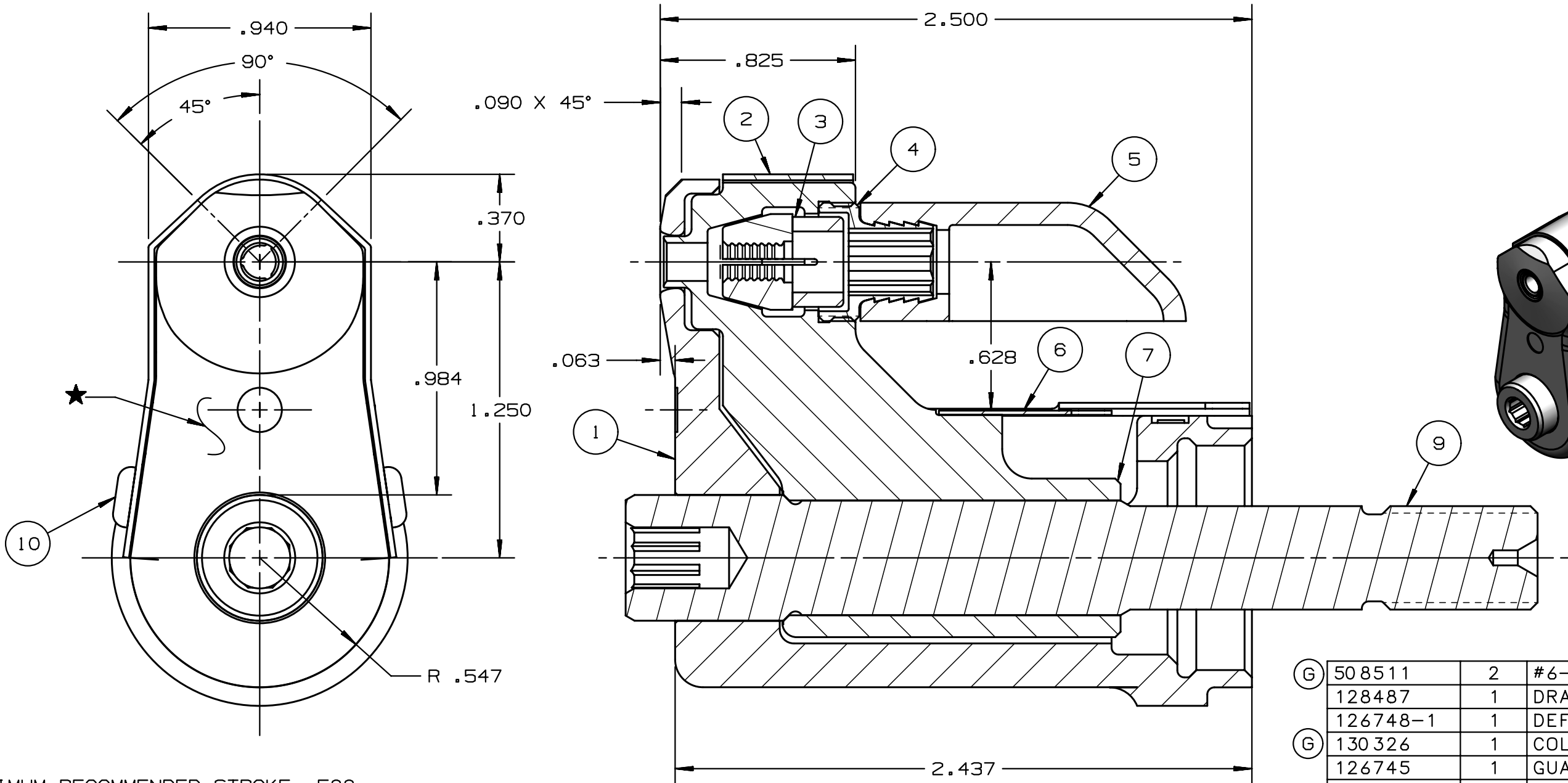


- NOTES:
- 1 MAXIMUM RECOMMENDED STROKE .500
 - 2 FOR USE WITH THE 225/245 TOOL, USE ATTACHMENT P/N 119400-1 AND STROKE LIMITER 118362
 - 3 FOR USE WITH 2500, USE ATTACHMENT P/N 119400-1 AND STROKE LIMITER KIT 119888
 - 4 FOR OTHER TOOLS AND/OR OTHER TOOL AND STROKE COMBINATIONS, CONSULT ENGINEERING DEPARTMENT
 - 5 SHIP WITH STOP 126747
 - 6 SHIP WITH DEFLECTOR 126748-1
 - 7 SHIP WITH (2) .030 SHIMS 128290 REFERENCE PB563 FOR PROPER USE

G	508511	2	#6-32 B.H.C.S.	10
	128487	1	DRAWBAR	9
	126748-1	1	DEFLECTOR	8
G	130326	1	COLLET	7
	126745	1	GUARD	6
	120095	1	DEFLECTOR	5
	122912	1	BARBED RETAINERS	4
G	130051	1	UNITIZED CHUCK JAWS	3
	130322	1	TOP GUARD	2
	127032	1	ANVIL	1
	PART NO.	QTY	DESCRIPTION	ITEM

IDENTIFICATION PER SPEC 42-311: ★ ETCH		HUCK INTERNATIONAL, INC., I.S.D 1 CORPORATE DR KINGSTON, NEW YORK 12401	
ITAR/ECCN: EAR99		NOSE ASSEMBLY -05 LGP	
SCH B#: 8467.99.0190		FINAL ASSY: FOR USE WITH 206-375	
HTS: 8467.99.0190	ENG: MVM CK:	DATE: 9/5/02	SCALE: 2:1
	B 99-3700		

REV	DESCRIPTION	DET	DATE
E	ITEM 3, 130051 WAS 128076	EL	11/09/11
F	128494 WAS 128604 ADDED 128487	JJC	07/13/12
G	ADDED 580511, 130322 WAS 126746, 130326 WAS 126745; ADDED VIEW	NDG	06/03/13



NOTES:

- 1 MAXIMUM RECOMMENDED STROKE .500
- 2 FOR USE WITH THE 225/245 TOOL, USE ATTACHMENT P/N 119400-1 AND STROKE LIMITER 118362
- 3 FOR USE WITH 2500, USE ATTACHMENT P/N 119400-1 AND STROKE LIMITER KIT 119888
- 4 FOR OTHER TOOLS AND/OR OTHER TOOL AND STROKE COMBINATIONS, CONSULT ENGINEERING DEPARTMENT
- 5 SHIP WITH STOP 126747
- 6 SHIP WITH DEFLECTOR 126748-1
- 7 SHIP WITH (2) .030 SHIMS 128290 REFERENCE PB563 FOR PROPER USE

G	508511	2	#6-32 B.H.C.S.	10
	128487	1	DRAWBAR	9
	126748-1	1	DEFLECTOR	8
G	130326	1	COLLET	7
	126745	1	GUARD	6
	120095	1	DEFLECTOR	5
	122912	1	BARBED RETAINERS	4
	130051	1	UNITIZED CHUCK JAWS	3
G	130322	1	TOP GUARD	2
	127032	1	ANVIL	1
	PART NO.	QTY	DESCRIPTION	ITEM

IDENTIFICATION PER SPEC 42-311: ★ ETCH	HUCK INTERNATIONAL, INC., I.S.D 1 CORPORATE DR KINGSTON, NEW YORK 12401		
ITAR/ECCN: EAR99	NOSE ASSEMBLY -05 LGP		
SCH B#: 8467.99.0190	FINAL ASSY: FOR USE WITH 206-375		
HTS: 8467.99.0190	ENG: MVM CK: B	DATE: 9/5/02	SCALE: 2:1
	99-3700		