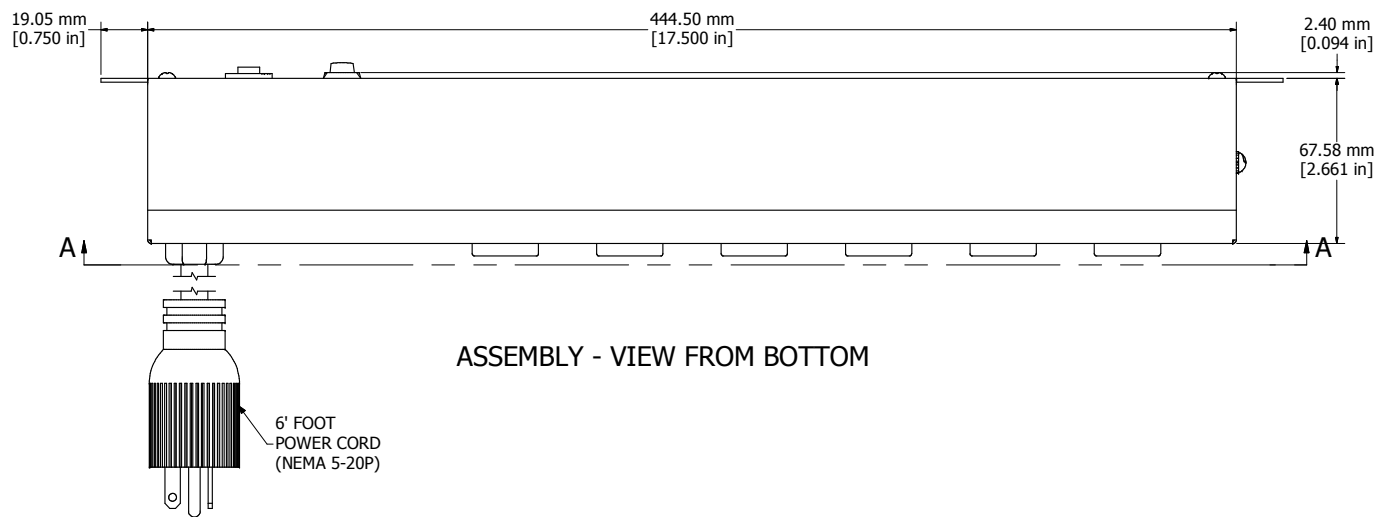
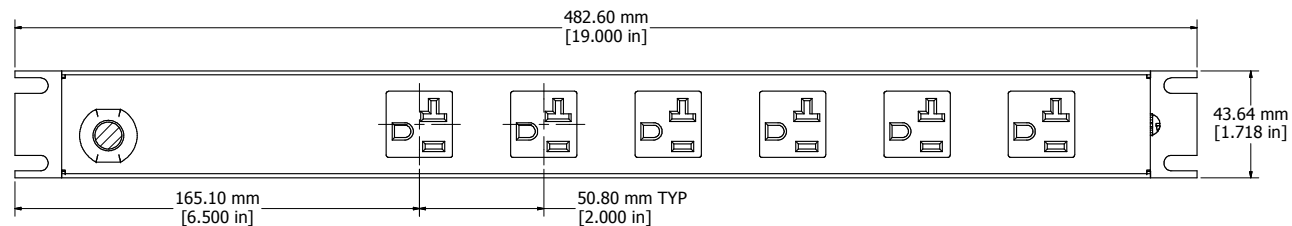


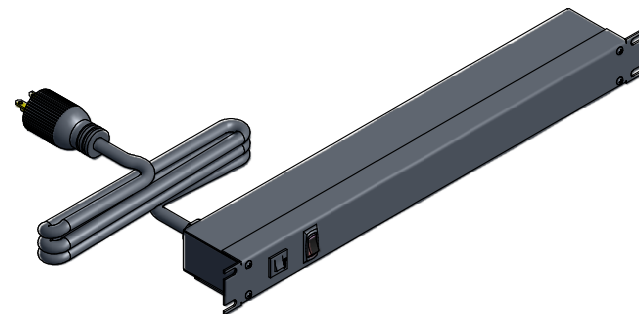
ASSEMBLY - VIEW FROM FRONT



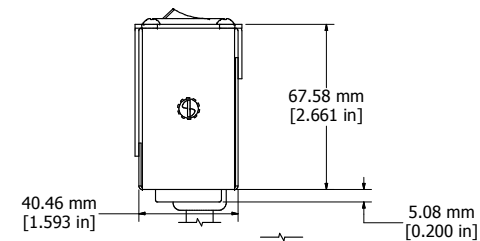
ASSEMBLY - VIEW FROM BOTTOM



SECTION A-A



ISOMETRIC VIEW



ASSEMBLY - VIEW FROM SIDE

1589H6F1BKRR
Finish - Front - Black Painted Steel
Back - Black Painted Steel
Rated - 125 VAC, 60 Hz, 20 Amps
Approvals - CSA Certified Standards C22.2 (No. 21-95, 42-99)
- UL Recognized Standard UL1363
Cord Length
1589H6F1BKRR - 6' Foot Power Cord (NEMA 5-20P)
1589H6G1BKRR - 15' Foot Power Cord (NEMA 5-20P)



HAMMOND  
MANUFACTURING™

1589H6F1BKRR

www.hammondmfg.com

# Mouser Electronics

Authorized Distributor

Click to View Pricing, Inventory, Delivery & Lifecycle Information:

Hammond:

[1589H6F1BKRR](#) [1589H6G1BKRR](#)