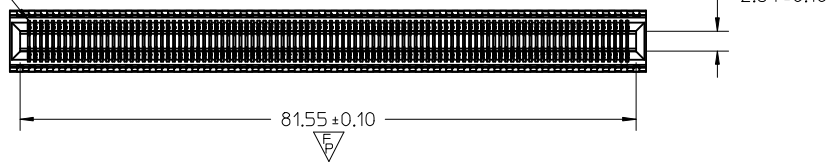
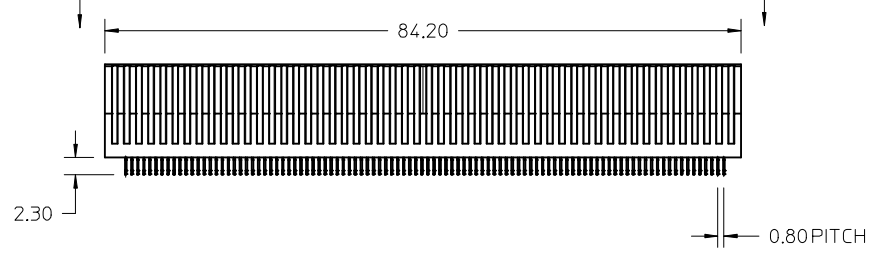


CIRCUIT #1



PIN-OUT VIEW

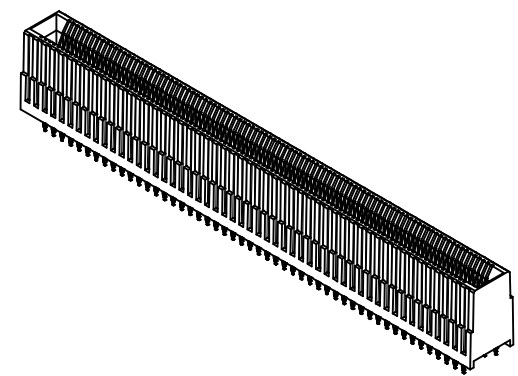
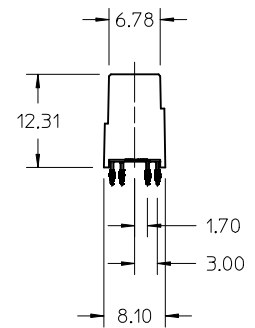


CIRCUIT #200

CIRCUIT #101


CIRCUIT #1

CIRCUIT #100

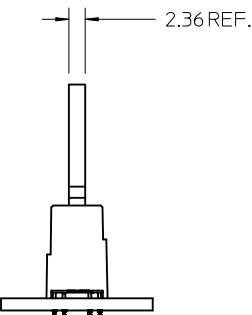
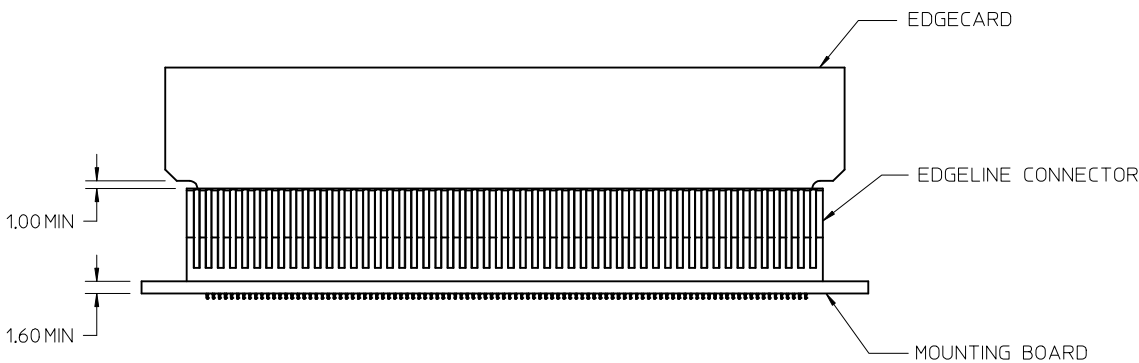


NOTES:

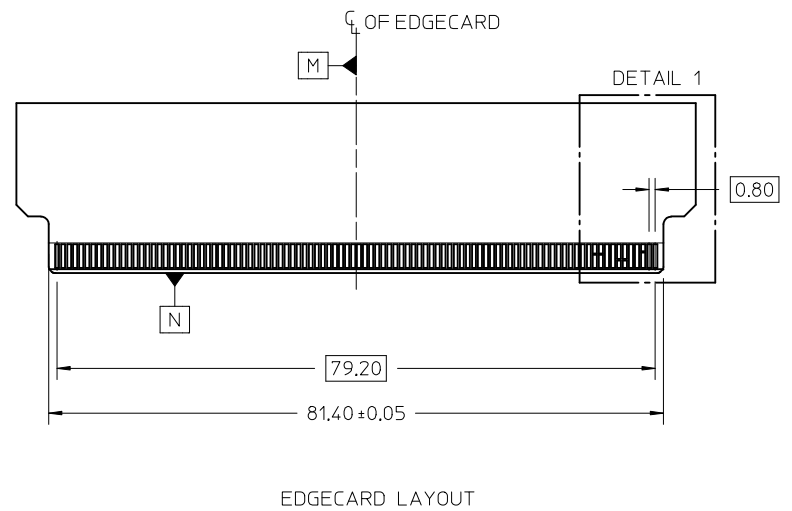
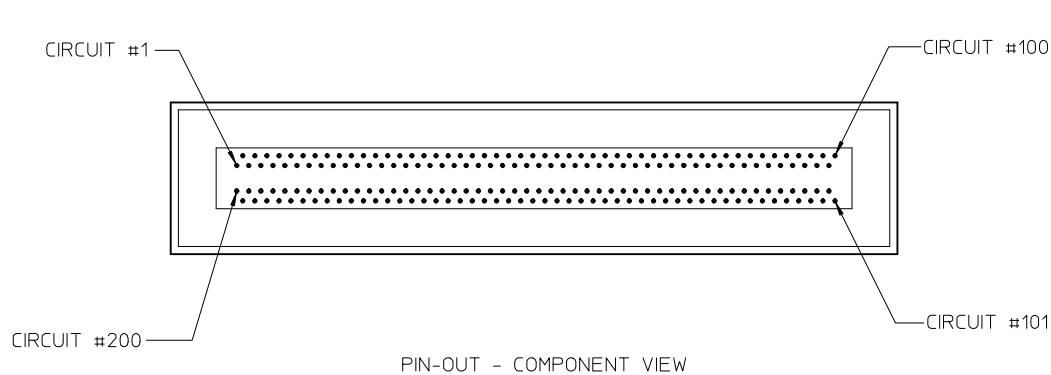
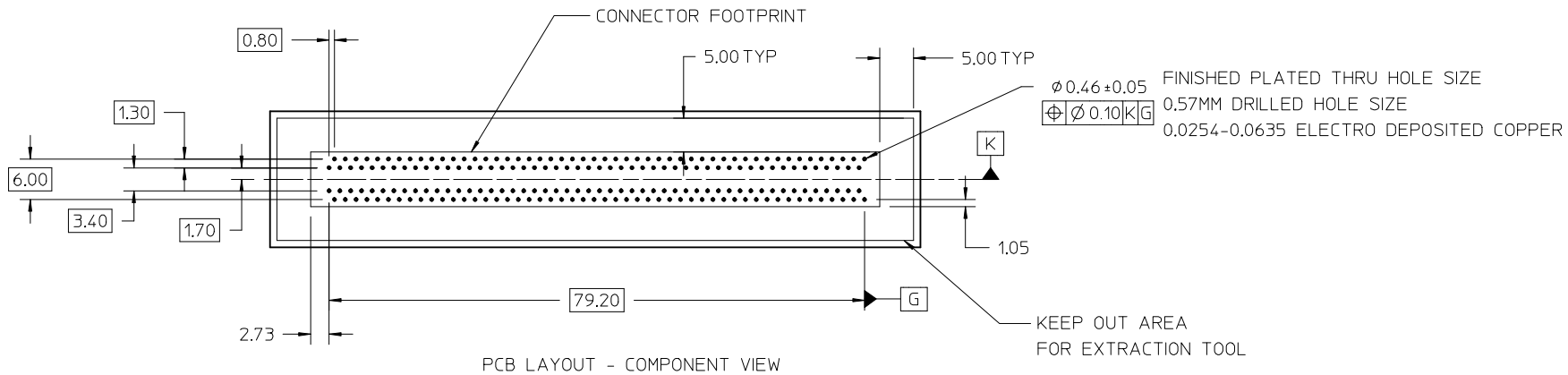
1. MATERIAL:
HOUSING - GLASS FILLED THERMOPLASTIC, 94-V0, BLACK
TERMINALS - COPPER ALLOY
2. FINISH:
CONTACT AREA: HARD GOLD -0.76μm MIN OVER 3.80μ NICKEL
COMPLIANT AREA: TIN - 0.76/1.52μm OVER NICKEL
3. REFER TO PS-75594-999 PRODUCT SPECIFICATION FOR ALL ELECTRICAL, MECHANICAL AND ENVIROMENTAL SPECIFICATIONS.
4. REFER TO PK-76693-900 FOR ALL PACKAGING SPECIFICATIONS.
5. PROCESSING: PRESSFIT TO PC BOARD.
6. MATING PC BOARD THICKNESS = 2.36±0.16MM OVER CONTACT PADS.
7. THIS PART CONFORMS TO CLASS B REQUIREMENTS OF COSMETIC SPEC PS-45499-002


INITIAL RELEASE EC NO: UCP2015-1097 DRWN:RWHPLE 2014/09/18 CHKD:MPOFF 2014/09/18 APPR:SMILLER 2014/09/29 REV A	DESCRIPTION REV	QUALITY SYMBOLS ▽=0 ▽=1 ▽=1	GENERAL TOLERANCES (UNLESS SPECIFIED)		DIMENSION STYLE MM ONLY		SCALE 2:1	DESIGN UNITS METRIC	 THIRD ANGLE PROJECTION	
			4 PLACES ± ---	mm	INCH	DRAWN BY RWHPLE	DATE 2014/09/18	TITLE EDGELINE 12.5GB 200CKTS 0.093" PCB 0.8MM PITCH		
ANGULAR ± 2 °		MATERIAL NO. 766931200		DOCUMENT NO. RSD-76693-1200		SHEET NO. 1 OF 4				
DRAFT WHERE APPLICABLE MUST REMAIN WITHIN DIMENSIONS		THIS DRAWING CONTAINS INFORMATION THAT IS PROPRIETARY TO MOLEX INCORPORATED AND SHOULD NOT BE USED WITHOUT WRITTEN PERMISSION								

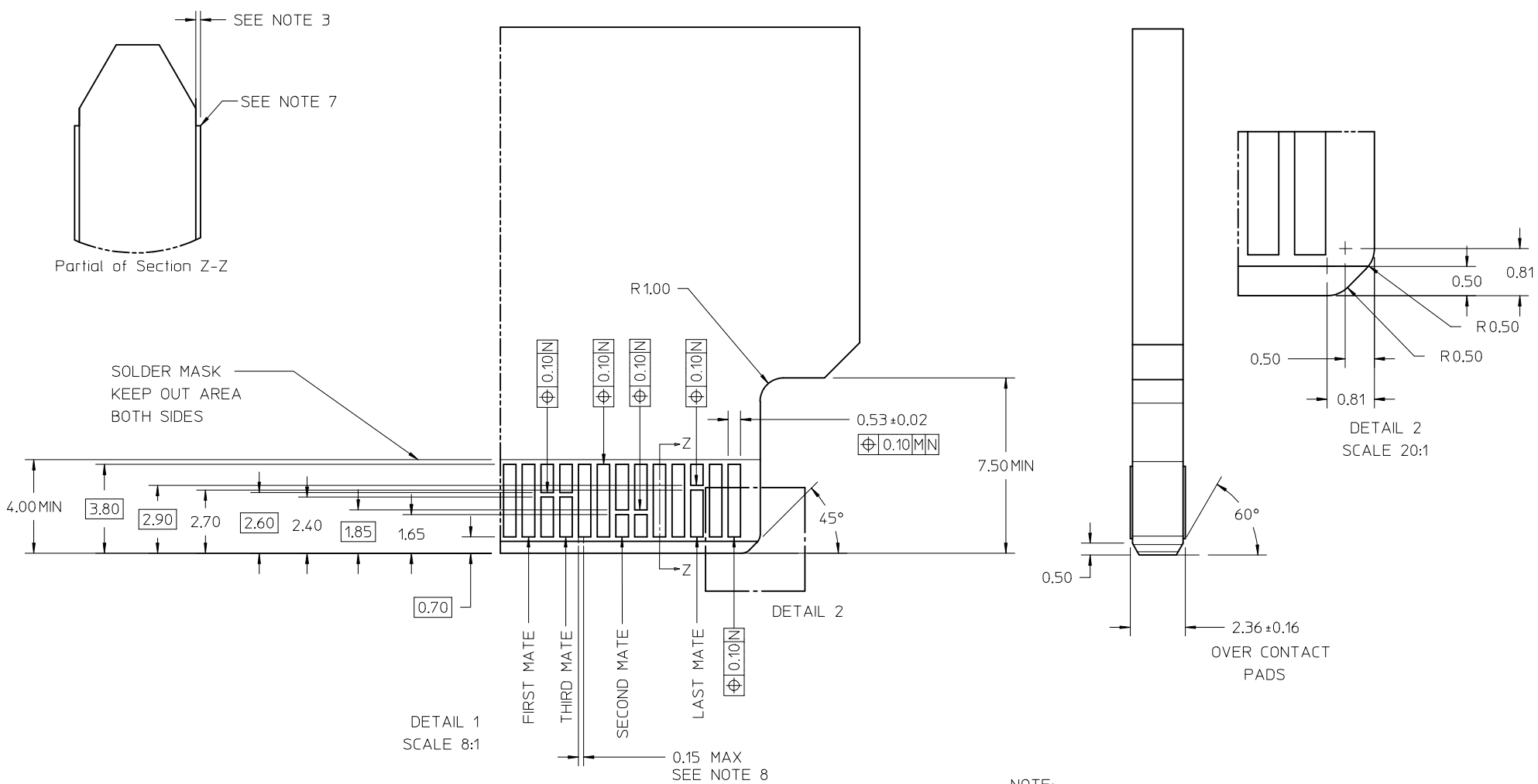
EDGE LINE CONNECTOR BOARD MOUNTING



SEE SHEET 1 EC NO: UCP2015-1097 DRAWN:RWHIPPLE 2014/09/18 CHKD:MPOFF 2014/09/18 APPR:SMILLER 2014/09/29	DESCRIPTION	QUALITY SYMBOLS <div>▽=0</div> <div>▽=0</div> <div>▽=0</div>	GENERAL TOLERANCES (UNLESS SPECIFIED)		DIMENSION STYLE		SCALE	DESIGN UNITS	THIRD ANGLE PROJECTION
					MM ONLY		2:1	METRIC	
					DRAWN BY	DATE	TITLE EDGELINE 12.5GB 200CKTS 0.093" PCB 0.8MM PITCH		
					RWHIPPLE	2014/09/18			
					CHECKED BY	DATE			
					MPOFF	2014/09/18			
					APPROVED BY	DATE			
					SMILLER	2014/09/29			
					MATERIAL NO.		DOCUMENT NO.		SHEET NO.
					SEE SHEET 1		RSD-76693-1200		2 OF 4
A	REV		DRAFT WHERE APPLICABLE MUST REMAIN WITHIN DIMENSIONS		SIZE C		THIS DRAWING CONTAINS INFORMATION THAT IS PROPRIETARY TO MOLEX INCORPORATED AND SHOULD NOT BE USED WITHOUT WRITTEN PERMISSION		



SEE SHEET 1 EC NO: UCP2015-1097 DRAWN BY: RWHIPPLE CHKD BY: MPOFF APPR: SMILLER	REV	DESCRIPTION	QUALITY SYMBOLS	GENERAL TOLERANCES (UNLESS SPECIFIED)		DIMENSION STYLE MM ONLY		SCALE 2:1	DESIGN UNITS METRIC	 THIRD ANGLE PROJECTION	TITLE EDGELINE 12.5GB 200CKTS 0.093" PCB 0.8MM PITCH	
						DRAWN BY DATE RWHIPPLE 2014/09/18						
						CHECKED BY DATE MPOFF 2014/09/18						
						APPROVED BY DATE SMILLER 2014/09/29						
						MATERIAL NO.		DOCUMENT NO.	SHEET NO.			
						SEE SHEET 1		RSD-76693-1200				3 OF 4
						SIZE		THIS DRAWING CONTAINS INFORMATION THAT IS PROPRIETARY TO MOLEX INCORPORATED AND SHOULD NOT BE USED WITHOUT WRITTEN PERMISSION				



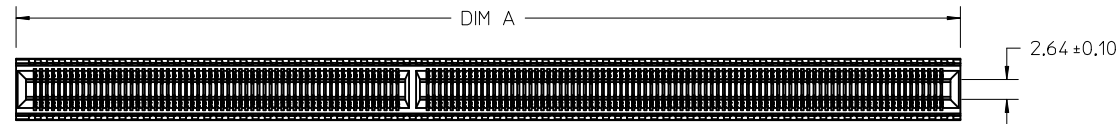
MATING PCB NOTES:

- 1. CONNECTOR LAND CONDITIONS SHALL MEET THE MOST CURRENT REVISION OF PCB SPECIFICATION IPC-6012C-2010 SECTION 3.5.4.4.
- 2. DIMENSIONS APPLY TO LANDS ON BOTH SIDES OF THE BOARD.
- 3. THE THICKNESS OF THE OUTER METAL LAYERS, INCLUDING FOIL, COPPER PLATING, AND THE PROTECTIVE SURFACE FINISH, SHALL BE 0.066mm MAX.
- 4. CHAMFER ROUGHNESS NOT TO EXCEED 3.17 MICROMETERS.
- 5. CHAMFER PROCESS SHALL NOT DAMAGE THE GOLD EDGE LANDS.
- 6. EDGE CARD CHAMFER NOT TO GO THRU GOLD LANDS.
- 7. 0.03mm MAX PLATING OVERHANG ON ALL GOLD LAND EDGES.
- 8. MOLEX RECOMMENDS NO TIE-BARS ON THE LEADING EDGE OF THE GOLD LAND, IF TIE-BARS ARE USED, THEY SHALL BE PLACED TO ONE SIDE OF THE GOLD LAND, APPLIES TO ALL GOLD LANDS.

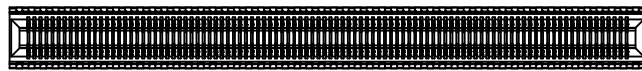
NOTE:
THESE ARE GENERIC DETAILS THAT DESCRIBES THE CONFIGURATION OF VARIOUS PCB DESIGN ELEMENTS. THE CUSTOMER MUST DETERMINE WHERE AND WHEN TO USE EACH ELEMENT TO ACCOMODATE THEIR SPECIFIC APPLICATION.

SEE SHEET 1 EC NO: UCP2015-1097 DRAWN:RWHIPPLE CHKD:MPOFF APPR:SMILLER	2014/09/18 2014/09/18 2014/09/29	DESCRIPTION	QUALITY SYMBOLS	GENERAL TOLERANCES (UNLESS SPECIFIED)		DIMENSION STYLE MM ONLY		SCALE 8:1	DESIGN UNITS METRIC	THIRD ANGLE PROJECTION			
					mm	INCH	DRAWN BY RWHIPPLE	DATE 2014/09/18	TITLE EDGELINE 12.5GB 200CKTS 0.093" PCB 0.8MM PITCH				
				4 PLACES	± ---	± ---	CHECKED BY MPOFF	DATE 2014/09/18					
				3 PLACES	± ---	± ---							
				2 PLACES	± 0.15	± ---	APPROVED BY SMILLER		DATE 2014/09/29	molex RSD-76693-1200			
				1 PLACE	± 0.25	± ---							
				0 PLACE	±	±							
				ANGULAR ± 2 °		MATERIAL NO.		DOCUMENT NO.					
				DRAFT WHERE APPLICABLE MUST REMAIN WITHIN DIMENSIONS		SEE SHEET 1		4 OF 4					
						SIZE		THIS DRAWING CONTAINS INFORMATION THAT IS PROPRIETARY TO MOLEX INCORPORATED AND SHOULD NOT BE USED WITHOUT WRITTEN PERMISSION					

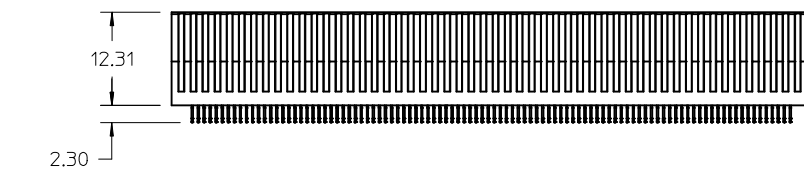
PART NUMBER	VERSION	BAY 1/BAY 2	TOTAL CIRCUITS	DIM A	SALES DRAWING (SEE NOTE 8)
170672-2294	2 BAY	122/172	294	125.03	SD-170672-2294
170672-2278	2 BAY	146/132	278	118.63	SD-170672-2278
170672-1200	1 BAY	200	200	84.20	SD-170672-1200
170672-1170	1 BAY	170	170	72.20	SD-170672-1170
170672-2108	2 BAY	86/22	108	50.6	SD-170672-2108



2 BAY EDGE LINE

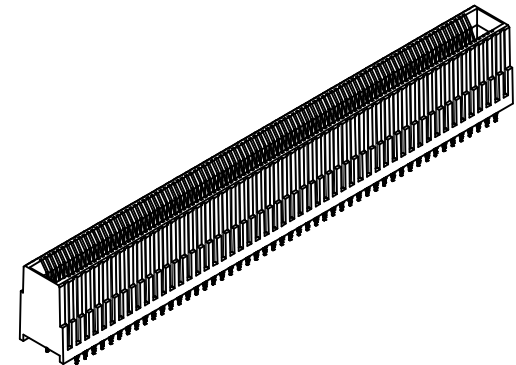
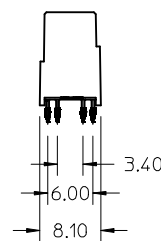


1 BAY EDGE LINE



LAST CIRCUIT

FIRST CIRCUIT

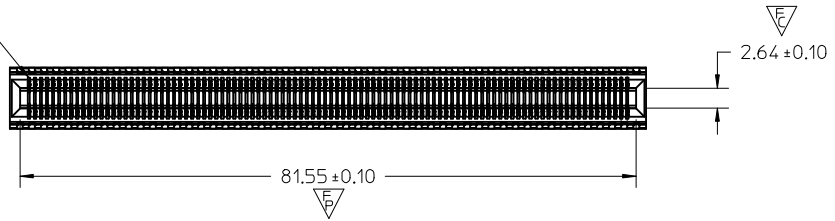


NOTES:

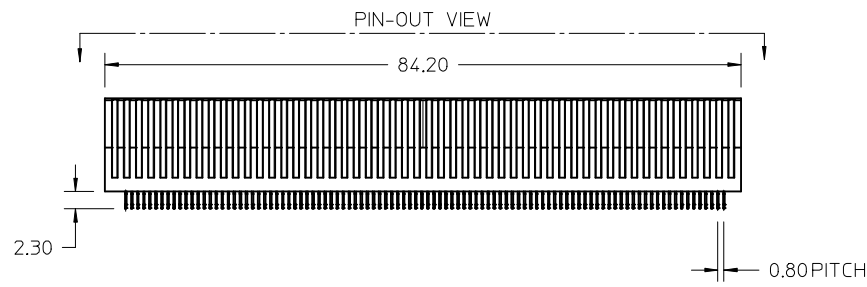
- MATERIAL:
HOUSING - GLASS FILLED THERMOPLASTIC, 94-V0, BLACK
TERMINALS - COPPER ALLOY
- FINISH:
CONTACT AREA: HARD GOLD -0.76μm MIN OVER 3.80μ NICKEL
COMPLIANT AREA: TIN - 0.76/1.52μm OVER NICKEL
- REFER TO PS-75594-999 PRODUCT SPECIFICATION FOR ALL ELECTRICAL, MECHANICAL AND ENVIRONMENTAL SPECIFICATIONS.
- PROCESSING: PRESSFIT TO PC BOARD.
- MATING PC BOARD THICKNESS = 2.36±0.16MM OVER CONTACT PADS.
- THIS PART CONFORMS TO CLASS B REQUIREMENTS OF COSMETIC SPEC PS-45499-002
- FOR EDGE CARD AND MOUNTING PCB LAYOUT DETAIL SEE CORRESPONDING SALES DRAWING.

ADD P/N 170672-2108 EC NO: UCP2015-1097 DRAWN: RHIPPLE 2014/09/15 CHKD: MPOFF 2014/09/15 APPR: SMILLER 2014/09/29	DESCRIPTION	QUALITY SYMBOLS	GENERAL TOLERANCES (UNLESS SPECIFIED)		DIMENSION STYLE MM ONLY		SCALE 2:1	DESIGN UNITS METRIC	THIRD ANGLE PROJECTION			
		<div>▽=0</div> <div>▽=0</div> <div>▽=0</div>		mm	INCH	DRAWN BY DROSCA	DATE 2010/07/01	TITLE EDGE LINE 12.5GB 0.093" PCB 0.8MM PITCH				
			4 PLACES	± ---	± ---	CHECKED BY JCOMERC I	DATE 2011/03/28					
			3 PLACES	± ---	± ---	APPROVED BY JCOMERC I	DATE 2010/10/25					
			2 PLACES	± ---	± ---	MATERIAL NO.		DOCUMENT NO.		SHEET NO. 1 OF 1		
			1 PLACE	± ---	± ---							
		0 PLACE	±	±	SEE TABLE		SD-170672-0001					
		ANGULAR ±1/2°			DRAFT WHERE APPLICABLE MUST REMAIN WITHIN DIMENSIONS		THIS DRAWING CONTAINS INFORMATION THAT IS PROPRIETARY TO MOLEX INCORPORATED AND SHOULD NOT BE USED WITHOUT WRITTEN PERMISSION					

CIRCUIT #1



PIN-OUT VIEW

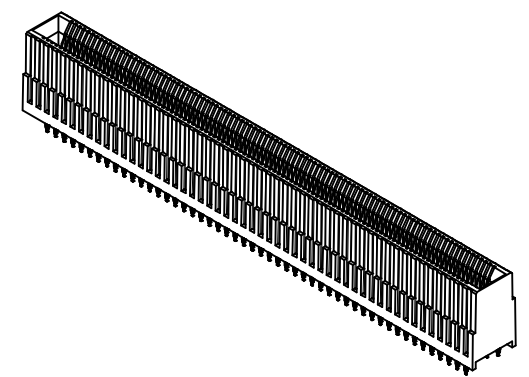
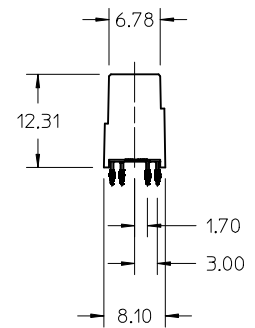


CIRCUIT #200

CIRCUIT #101

CIRCUIT #1

CIRCUIT #100

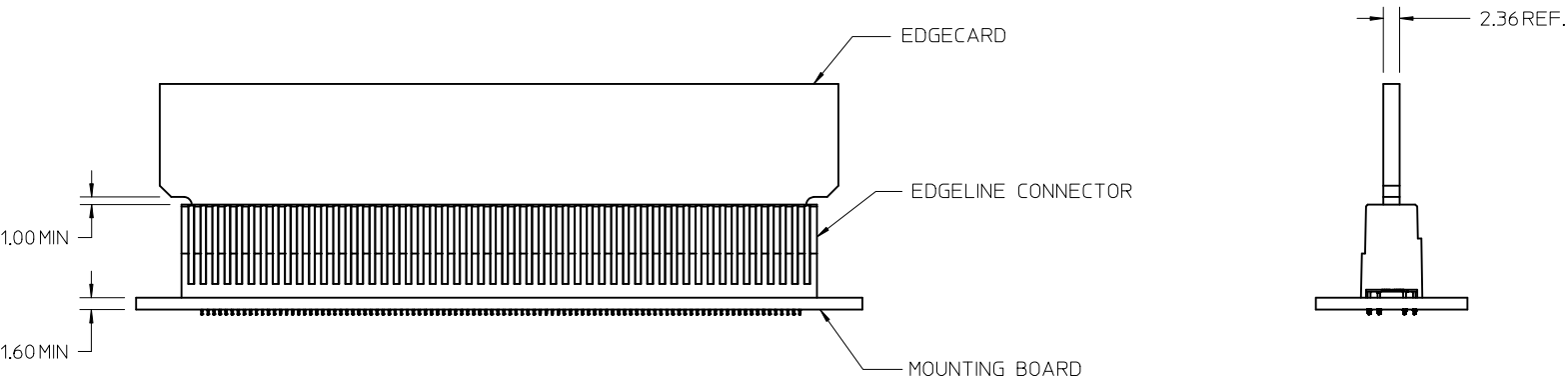


NOTES:

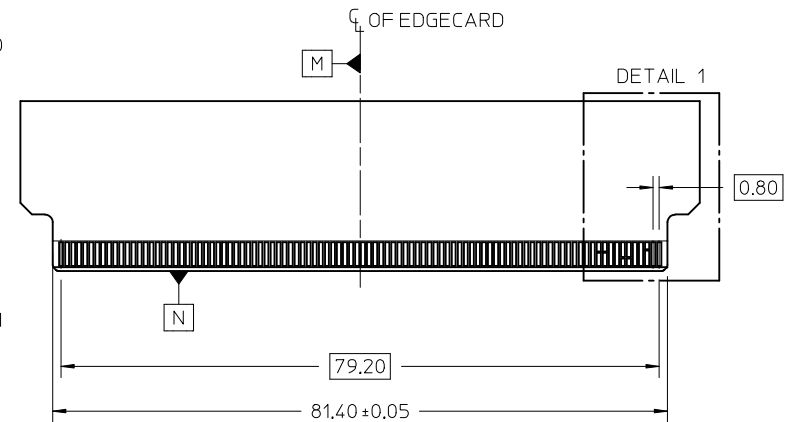
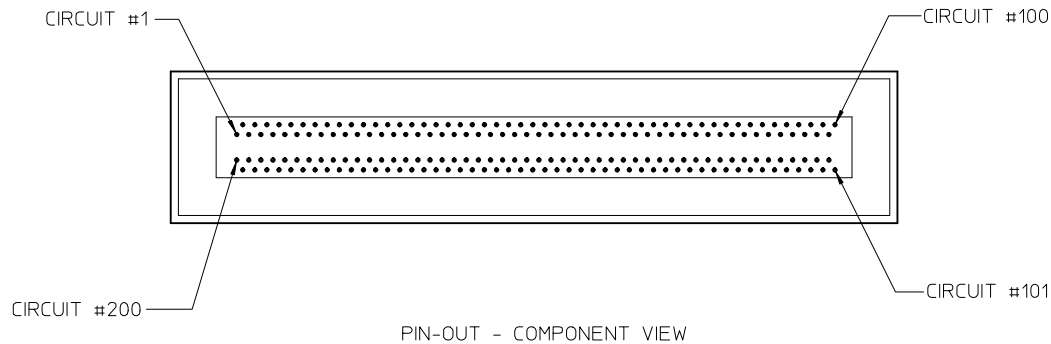
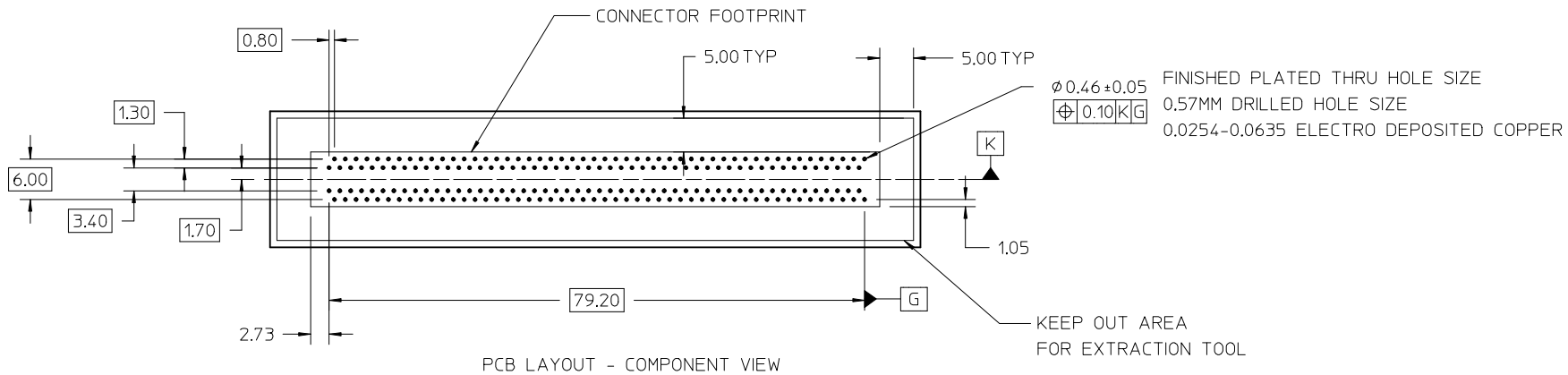
- 1. MATERIAL:
HOUSING - GLASS FILLED THERMOPLASTIC, 94-V0, BLACK
TERMINALS - COPPER ALLOY
- 2. FINISH:
CONTACT AREA: HARD GOLD -0.76µm MIN OVER 3.80µ NICKEL
COMPLIANT AREA: TIN - 0.76/1.52µm OVER NICKEL
- 3. REFER TO PS-75594-999 PRODUCT SPECIFICATION FOR ALL ELECTRICAL, MECHANICAL AND ENVIROMENTAL SPECIFICATIONS.
- 4. REFER TO PK-76693-900 FOR ALL PACKAGING SPECIFICATIONS.
- 5. PROCESSING: PRESSFIT TO PC BOARD.
- 6. MATING PC BOARD THICKNESS = 2.36±0.16MM OVER CONTACT PADS.
- 7. PRODUCT IS ELV AND RoHS COMPLIANT. LEVEL OF COMPLIANCE: 6/6
ALL BANNED SUBSTANCES ARE REMOVED:
Pb (LEAD)
HEXAVALENT CHROMIUM (CrVI)
CADMIUM
MERCURY
POLYBRMINATED BIPHENYL (PBB)
POLYBROMINATED DIPHENYL ETHER (PBDE)
- 8. THIS PART CONFORMS TO CLASS B REQUIREMENTS OF COSMETIC SPEC PS-45499-002

CHANGE PTH TOLERANCE EC NO: UCP2014-1613 DRAWN: RHIPPLE 2013/11/22 CHKD: MPOFF 2013/11/22 APPR: SMILLER 2013/12/16 REV 2	DESCRIPTION REV	QUALITY SYMBOLS <div>▽=0</div> <div>▽=1</div> <div>▽=1</div>	GENERAL TOLERANCES (UNLESS SPECIFIED)			DIMENSION STYLE MM ONLY		SCALE 2:1	DESIGN UNITS METRIC	<div>THIRD ANGLE PROJECTION</div>			
			mm		INCH		DRAWN BY DROSCA		DATE 2011/03/10		TITLE EDGELINE 12.5GB 0.093" PCB, 0.8MM PITCH 200 CIRCUITS molex		
			4 PLACES ± ---		± ---		CHECKED BY		DATE				
			3 PLACES ± ---		± ---		APPROVED BY JCOMERC I		DATE 2011/03/11				
			2 PLACES ± 0.13		± ---		MATERIAL NO. 1706721200		DOCUMENT NO. SD-170672-1200		SHEET NO. 1 OF 4		
			1 PLACE ± 0.25		± ---		THIS DRAWING CONTAINS INFORMATION THAT IS PROPRIETARY TO MOLEX INCORPORATED AND SHOULD NOT BE USED WITHOUT WRITTEN PERMISSION						
			0 PLACE ±		±								
			ANGULAR ±1/2°				SIZE C						
			DRAFT WHERE APPLICABLE MUST REMAIN WITHIN DIMENSIONS										

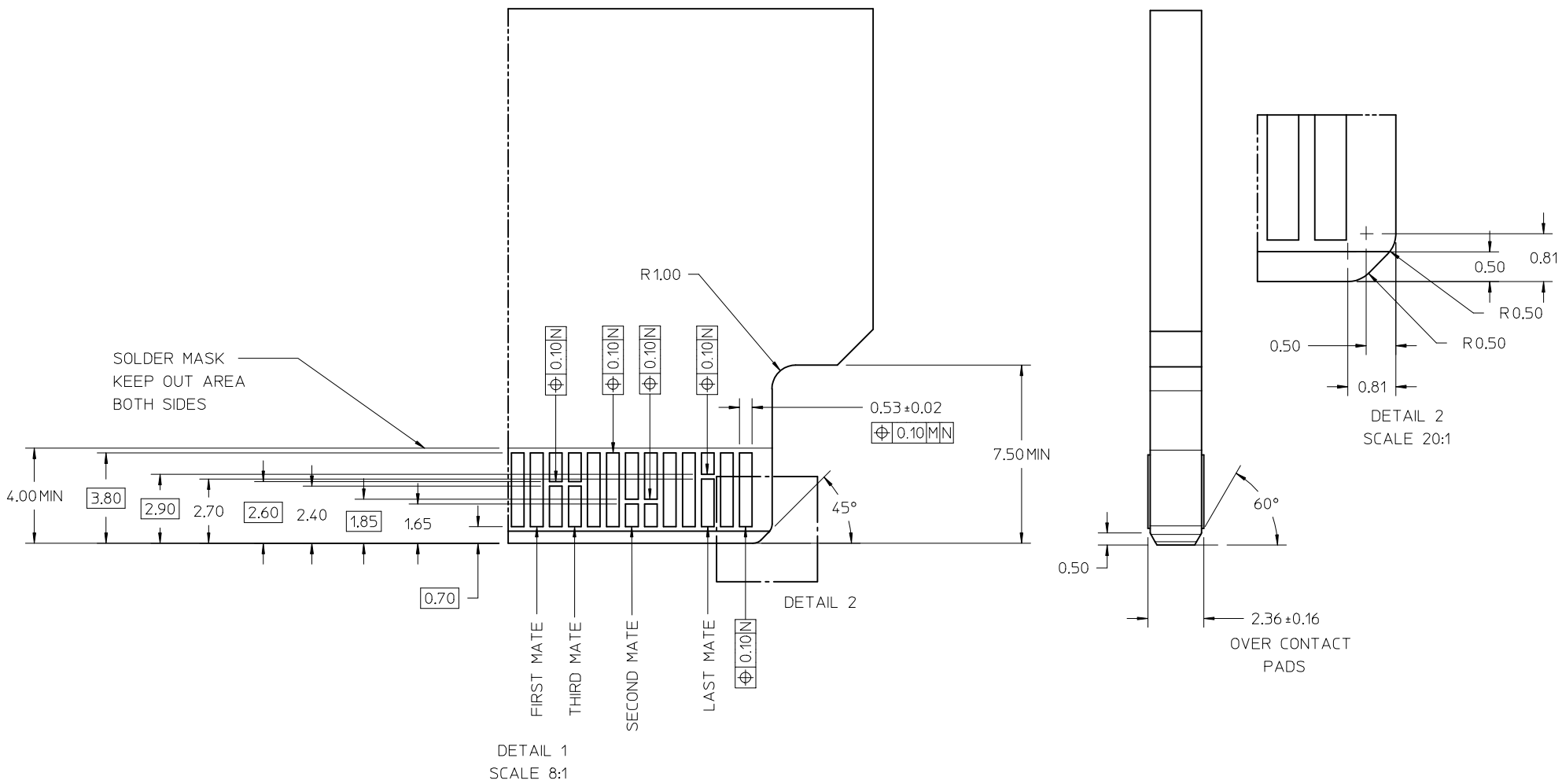
EDGE LINE CONNECTOR BOARD MOUNTING



SEE SHEET 1 EC NO: UCP2014-1613 2013/11/22 DRAWN:WHIPPLE 2013/11/22 CHKD:MP0FF 2013/12/16 APPR:SMILLER	DESCRIPTION REV	QUALITY SYMBOLS ▽=0 ▽=0 ▽=0	GENERAL TOLERANCES (UNLESS SPECIFIED)		DIMENSION STYLE MM ONLY		SCALE 2:1	DESIGN UNITS METRIC	THIRD ANGLE PROJECTION						
				mm	INCH	DRAWN BY DATE DROSCA 2011/03/10		TITLE EDGELINE 12.5GB 0.093" PCB, 0.8MM PITCH 200 CIRCUITS molex							
			4 PLACES	± ---	± ---	CHECKED BY DATE									
			3 PLACES	± ---	± ---	APPROVED BY DATE JCOMERC I 2011/03/11		DOCUMENT NO. SD-170672-1200				SHEET NO. 2 OF 4			
			2 PLACES	± 0.13	± ---										
			1 PLACE	± 0.25	± ---	SEE SHEET 1									
			0 PLACE	±	±										
			ANGULAR ±1/2°			MATERIAL NO.									
			DRAFT WHERE APPLICABLE MUST REMAIN WITHIN DIMENSIONS			SIZE C		THIS DRAWING CONTAINS INFORMATION THAT IS PROPRIETARY TO MOLEX INCORPORATED AND SHOULD NOT BE USED WITHOUT WRITTEN PERMISSION							



SEE SHEET 1 EC NO: UCP2014-1613 2013/11/22 DRWN:RHIPPLE CHKD:MP0FF APPR:SMILLER 2013/12/16	REV 2	DESCRIPTION QUALITY SYMBOLS ▽=0 ▽=0 ▽=0	GENERAL TOLERANCES (UNLESS SPECIFIED)			DIMENSION STYLE MM ONLY		SCALE 2:1	DESIGN UNITS METRIC	THIRD ANGLE PROJECTION		
			mm		INCH		DRAWN BY DROSCA		DATE 2011/03/10		TITLE EDGELINE 12.5GB 0.093" PCB, 0.8MM PITCH 200 CIRCUITS	
			4 PLACES ± ---		± ---		CHECKED BY		DATE			
			3 PLACES ± ---		± ---		APPROVED BY JCOMERC I		DATE 2011/03/11		molex	
			2 PLACES ± 0.13		± ---		MATERIAL NO.		DOCUMENT NO.			
			1 PLACE ± 0.25		± ---		SEE SHEET 1		SD-170672-1200			
			0 PLACE ±		±		SIZE C		THIS DRAWING CONTAINS INFORMATION THAT IS PROPRIETARY TO MOLEX INCORPORATED AND SHOULD NOT BE USED WITHOUT WRITTEN PERMISSION			
			ANGULAR ±1/2°				SHEET NO. 3 OF 4					
			DRAFT WHERE APPLICABLE MUST REMAIN WITHIN DIMENSIONS									



NOTE:

THESE ARE GENERIC DETAILS THAT DESCRIBES THE CONFIGURATION OF VARIOUS PCB DESIGN ELEMENTS. THE CUSTOMER MUST DETERMINE WHERE AND WHEN TO USE EACH ELEMENT TO ACCOMMODATE THEIR SPECIFIC APPLICATION.

SEE SHEET 1 EC NO: UCP2014-1613 DRWN:RHIPPLE CHKD:MP0FF APPR:SMILLER	2013/11/22 2013/11/22 2013/12/16	DESCRIPTION QUALITY SYMBOLS	GENERAL TOLERANCES (UNLESS SPECIFIED)		DIMENSION STYLE MM ONLY		SCALE 8:1	DESIGN UNITS METRIC	THIRD ANGLE PROJECTION						
				mm	INCH	DRAWN BY DROSCA	DATE 2011/03/10	TITLE EDGELINE 12.5GB 0.093" PCB, 0.8MM PITCH 200 CIRCUITS							
			4 PLACES	± ---	± ---	CHECKED BY	DATE								
			3 PLACES	± ---	± ---	APPROVED BY JCOMERC I		DATE 2011/03/11	DOCUMENT NO. SD-170672-1200						
			2 PLACES	± 0.13	± ---										
			1 PLACE	± 0.25	± ---	SEE SHEET 1									
			0 PLACE	±	±										
			ANGULAR ±1/2°			MATERIAL NO.		SHEET NO. 4 OF 4							
			DRAFT WHERE APPLICABLE MUST REMAIN WITHIN DIMENSIONS			SIZE C							THIS DRAWING CONTAINS INFORMATION THAT IS PROPRIETARY TO MOLEX INCORPORATED AND SHOULD NOT BE USED WITHOUT WRITTEN PERMISSION		