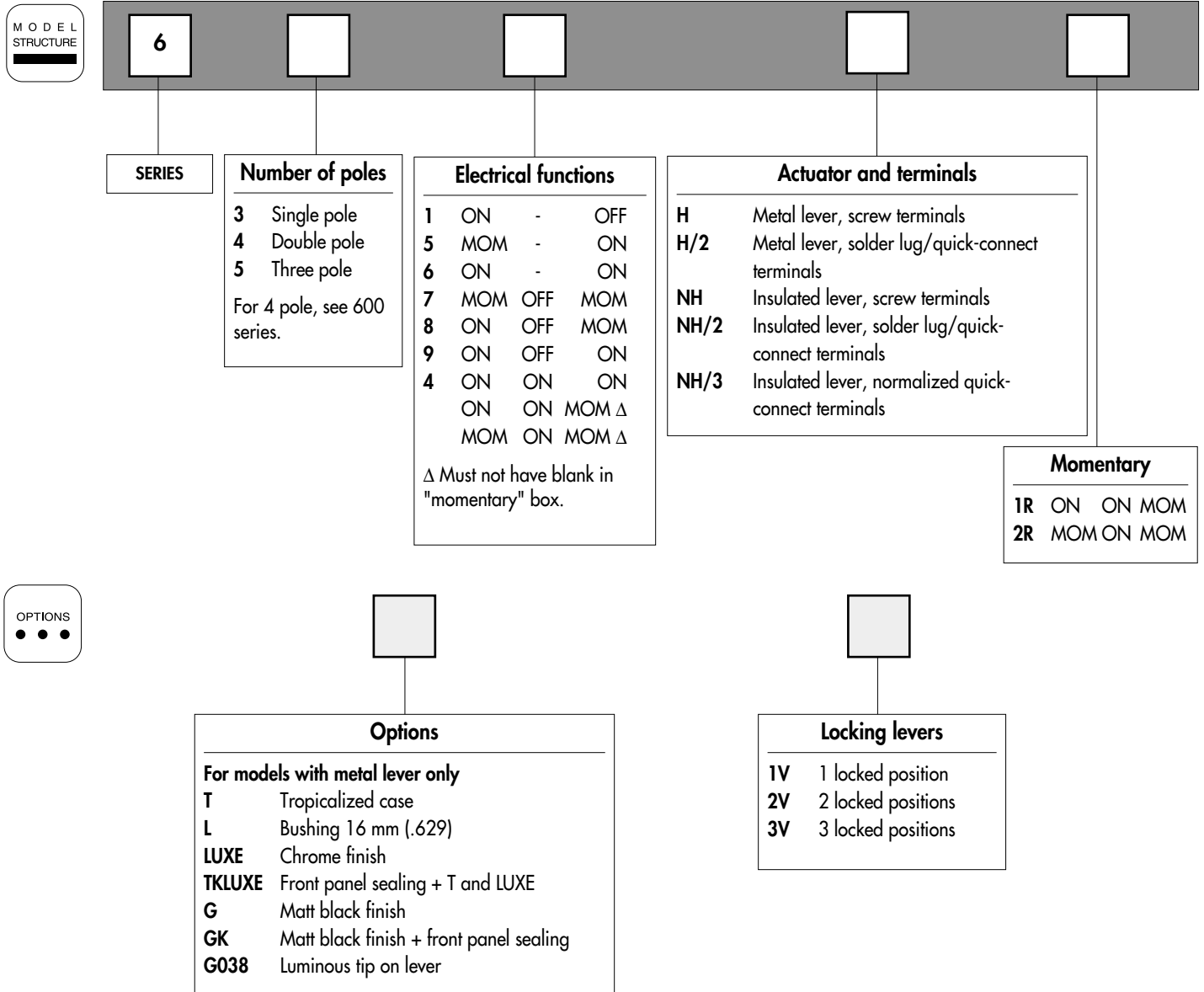


600H AND 600NH SERIES

TOGGLE SWITCHES - HIGH AMPERAGE

Overview



ABOUT THIS SERIES

Dimensions : first dimensions are in mm while inches are shown as bracketted numbers.

NOTICE : please note that not all combinations of above numbers are available. Refer to the following pages for further information.

Security caps are available to prevent inadvertent lever operation. They are presented in section M.

Sealing boots are available on 600H series to protect the switches against dust and water. They are presented in section N.

Mounting accessories : standard hardware supplied with all models :

- 600H and series : 1 hex nut U166 and 1 knurled nut U411

- 600NH series : 1 hex nut U166 and 1 knurled nut U522

Standard and special hardware are presented in section N.

Packaging unit : 25 pieces.

600H AND 600NH SERIES

TOGGLE SWITCHES - HIGH AMPERAGE

Distinctive features and specifications

❑ Construction

Terminal and contact support are manufactured from a single piece of metal. The contacts are resistance-welded to the terminal for increased mechanical strength.

❑ Rating

These switches are suitable for motor loads and power applications up to 15A 250VAC or 10A 400VAC

ELECTRICAL SPECIFICATIONS

- Max. current/voltage ratings : see tables below
- Peak current : 30A max. during 1/2 sine, 250VAC
- Initial contact resistance : 10 mΩ max. at 1A 2VDC
- Insulation resistance : 1.000 MΩ min. at 500VDC
- Dielectric strength :
 - 2.000 Vrms 50 Hz min. between terminals
 - 2.500 Vrms 50 Hz min. between terminals and frame
- Electrical life : 10.000 cycles at full load



For peak currents up to 150A, see section G.

APPROVED RATINGS

APPROVED RATINGS				
MODELS	FUNCTIONS	600H - 600NH		
		UL	CSA	NF-VDE
		UL 1054	CSA 22-2	EN 61058-1
Single and double pole	ON - OFF (1)	15A 1/2 HP 125-250VAC		10(4)A 400VAC T 85/55 (600H) T 125/55 (600NH)
	ON - ON (6)			
	Other (4-7-8-9)	10A 1/2 HP 125-250VAC		
Three pole	ON - OFF (1) & ON - ON (6)	15A 1/2 HP 125-250VAC		
	Other (4-7-8-9)	10A 1/2 HP 125-250VAC		

- FOR INFORMATION-

Max. current/voltage rating w. resistive load

Functions	Ratings	Electrical life
ON - OFF ON - ON	15A 250VAC 10A 24VDC 15A 12VDC	10.000 cycles
ON OFF ON	15A 250VAC	6.000 cycles
Other	15A 125VAC 12A 250VAC 5A 25VDC	10.000 cycles

MATERIALS

- Case : polyester UL94-V0
- Actuator :
 - 600H : brass, nickel plated
 - 600NH : black polyamide
- Bushing : brass, nickel plated
- Contacts : silver/nickel alloy

GENERAL SPECIFICATIONS

- Torque : 1,50 Nm (1.10 Ft.lb) max. applied to nut
- Panel thickness : 4,5 mm (.177) max. between 2 nuts
- Operating temperature : -20°C to +55°C

600H AND 600NH SERIES

TOGGLE SWITCHES - HIGH AMPERAGE

Specifications - Positions and connections

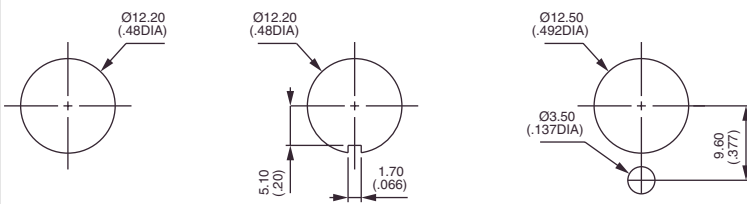
AGENCY APPROVALS



Availability : see chart on previous page.

Marking : approved models are standard marked.

PANEL CUT-OUT



MOUNTING RECOMMENDATIONS

Connection

- For quick-connect terminals, use 6,3 x 0,8 mm normalized female connectors.
- For screw terminals, use :
either 1,5 mm² or 2,5 mm² rigid wires,
or prepared stripped and tin plated flexible wires,
or prepared flexible wires with crimped termination per EN 50027 (DIN 46228)

Ground connector

Compulsory if the panel is not metallic or not connected to ground. Should also be used when front face nut is of plastic material.

Order separately, see section N.

POSITIONS AND CONNECTIONS - FUNCTIONS 4 (3 WAYS)

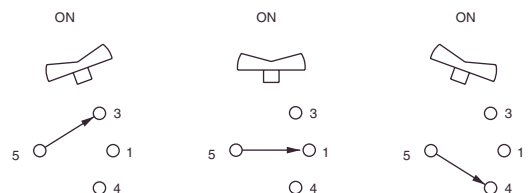
FOR 600 - 600H - 600NH - 3600NF - 6000 AND 2600 SERIES

FUNCTION 4			FUNCTION 4-1R (momentary one side)			FUNCTION 4-2R (momentary both sides)		
ON 5-6 2-3	ON 5-6 2-1	ON 5-4 2-1	MOM 5-6 2-3 ▲	ON 5-6 2-1	ON 5-4 2-1	MOM 5-6 2-3 ▲	ON 5-6 2-1	MOM 5-4 ▲ 2-1
4 5 6	4 5 6	4 5 6	4 5 6	4 5 6	4 5 6	4 5 6	4 5 6	4 5 6
1 2 3	1 2 3	1 2 3	1 2 3	1 2 3	1 2 3	1 2 3	1 2 3	1 2 3

• Common ° Maintained ▲ Momentary

Terminals 2 and 6 must be connected by the user for a 3 way switch

Single pole switches in a double pole case.

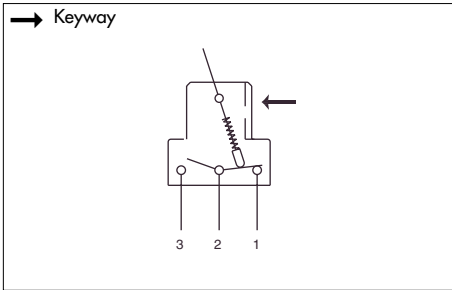


600H SERIES

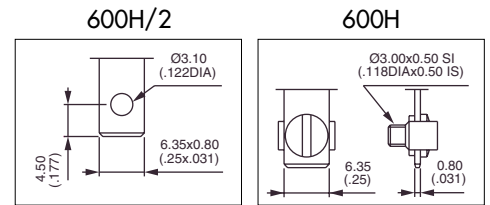
TOGGLE SWITCHES - HIGH AMPERAGE - METAL LEVER

Solder lug/quick-connect terminals - screw terminals

MODEL
STRUCTURE



- 2 and 3 maintained or momentary positions
- Solder lug/quick-connect terminals 6,35 x 0,8 (.250 x .031) or screw terminals + clamp
- 1, 2 and 3 pole configurations
- Normalized quick-connect terminals (/3) optional. On request.



MODEL
STRUCTURE

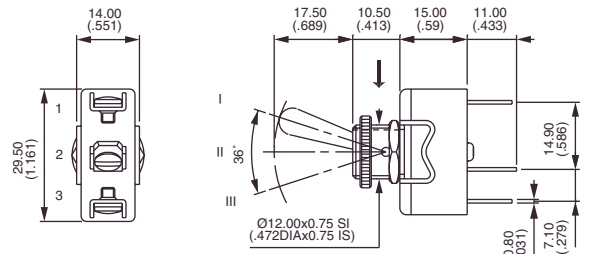


Single pole



	III	II	I
	2-1		2-3
Solder lug	631H/2	631H	ON - OFF
	635H/2	635H	MOM - ON
	636H/2	636H	ON - ON
	637H/2	637H	MOM OFF MOM
	638H/2	638H	ON OFF MOM
	639H/2	639H	ON OFF ON

→ Keyway

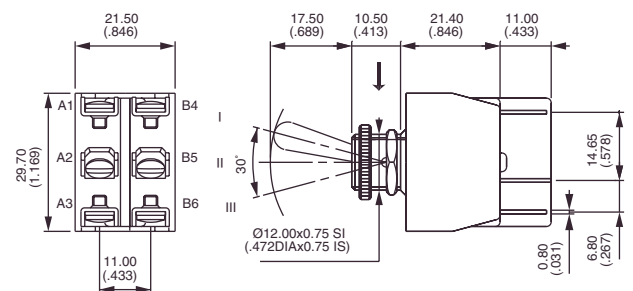


Double pole



	III	II	I
	2-1		2-3
	5-4		5-6
Solder lug	641H/2	641H	ON - OFF
	644H/2	644H*	ON ON ON
	644H/2-1R	644H-1R*	ON ON MOM
	644H/2-2R	644H-2R*	MOM ON MOM
	645H/2	645H	MOM - ON
	646H/2	646H	ON - ON
	647H/2	647H	MOM OFF MOM
	648H/2	648H	ON OFF MOM
	649H/2	649H	ON OFF ON

→ Keyway



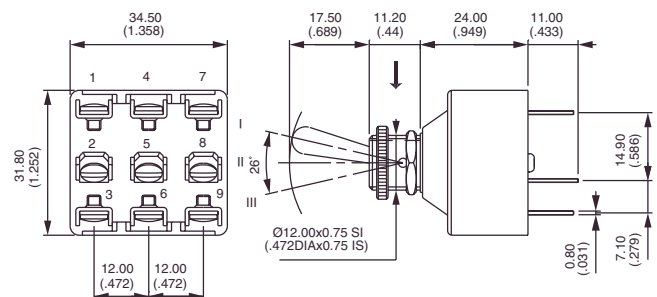
* Function 4 : SP in DP case - see specifications.

Three pole



	III	II	I
	2-1		2-3
	5-4		5-6
	8-7		8-9
Solder lug	651H/2	651H	ON - OFF
	655H/2	655H	MOM - ON
	656H/2	656H	ON - ON
	657H/2	657H	MOM OFF MOM
	658H/2	658H	ON OFF MOM
	659H/2	659H	ON OFF ON

→ Keyway



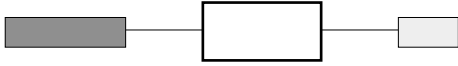
600H SERIES

TOGGLE SWITCHES - HIGH AMPERAGE - METAL LEVER

OPTIONS

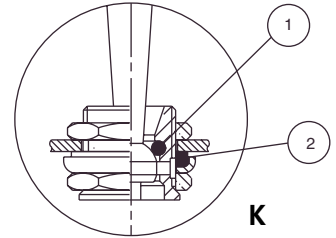


OPTIONS

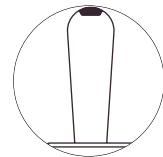


Complete above box with desired options in the same order as below

- T** Tropicalized diallylphthalate case (-40°C to +85°C)
- L** Special threaded bushing, length 16 mm (.629)
- LUXE** Chrome plated lever and cap nut U117
- TK LUXE** Front panel sealing by 1 O-ring and sealing washer.
Protects the switch against water and dust.
Panel seal withstands 1 bar pressure and remains sealed even when switch is operated + options T and LUXE.
- G** Matt black finish on bushing, lever and nuts.
Includes tropicalization (option T)
- GK** Front panel sealing by O-ring and sealing washer (as described in option TK LUXE)
+ option G
- G038** Option G + fluorescent tip on lever.
White fluorescent tip becomes luminous when submitted to ultra violet rays.



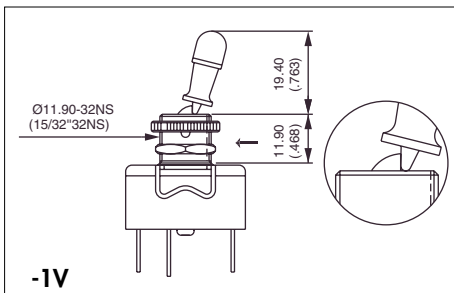
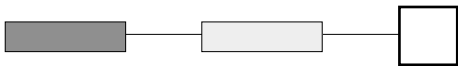
① O-ring ② Sealing washer



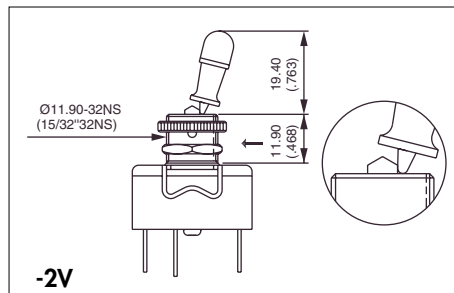
0.38

LOCKING LEVERS (1 and 2 pole models)

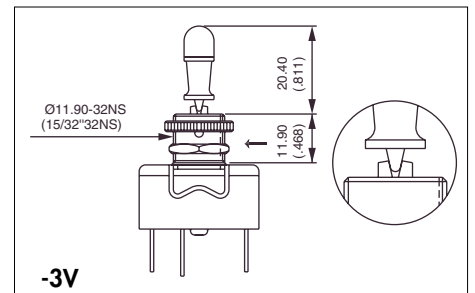
For 3-pole models, refer to 6000 series.



1 locked position



2 locked positions



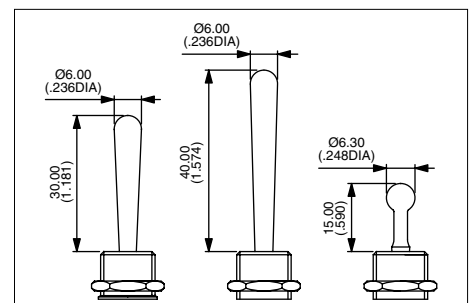
3 locked positions

→ Keyway

ACTUATOR OPTIONS (1 and 2 pole models)

- 30 mm (1.181) long actuator
- 40 mm (1.574) long actuator
- Retro style actuator, gold plated or chrome plated

On request.



6-600H SERIES

TOGGLE SWITCHES - METAL LEVER

MODEL
STRUCTURE

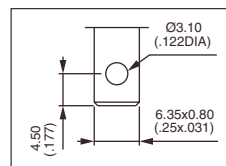
SPECIFICATIONS

- Max. current/voltage rating with resistive load : 6A 250VAC and 125VAC
- Initial contact resistance : 10mΩ max. at 1A 2VDC
- Insulation resistance : 1.000 MΩ min. at 500VDC
- Dielectric strength : 2.500 Vrms 50 Hz min. between terminals
- 2.500 Vrms 50 Hz between terminals and frame
- Electrical life at full load : 10.000 cycles
- Torque : 1,50 Nm (1.10 Ft.lb) max. applied to nut
- Panel thickness : 4,5 mm (.177) max. between 2 nuts
- Operating temperature : -20°C to +55°C
- Hardware supplied : 1 hex nut U166 and 1 knurled nut U411

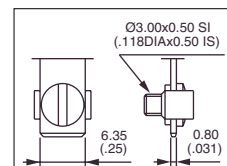
MATERIALS

- Case : melamine/polyester
- Actuator : brass, nickel plated
- Bushing : brass, nickel plated
- Contacts : copper, silver plated

6-600H/2



6-600H



Single pole

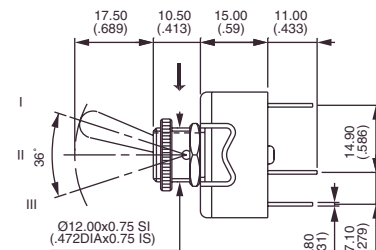
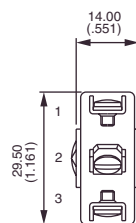
→ Keyway



Solder lug
6-631H/2
6-636H/2
6-639H/2

Screw term.
6-631H
6-636H
6-639H

III	II	I
2-1		2-3
ON	-	OFF
ON	-	ON
ON	OFF	ON



Double pole

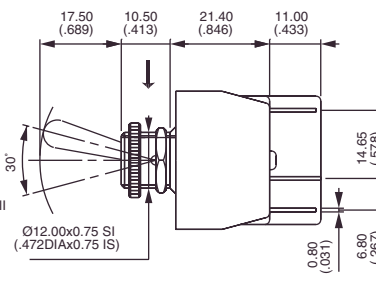
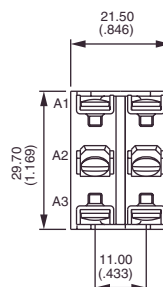
→ Keyway



Solder lug
6-641H/2
6-646H/2
6-649H/2

Screw term.
6-641H
6-646H
6-649H

III	II	I
2-1		2-3
5-4		5-6
ON	-	OFF
ON	-	ON
ON	OFF	ON



Three pole

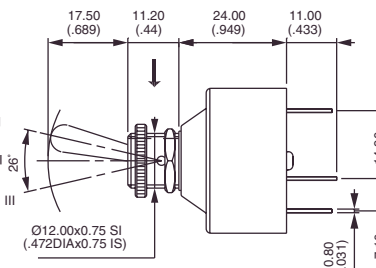
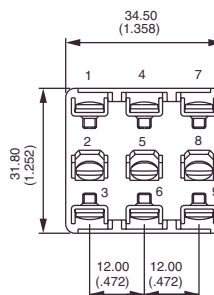
→ Keyway



Solder lug
6-651H/2
6-656H/2
6-659H/2

Screw term.
6-651H
6-656H
6-659H

III	II	I
2-1		2-3
5-4		5-6
8-7		8-9
ON	-	OFF
ON	-	ON
ON	OFF	ON



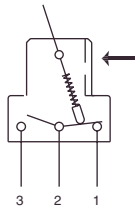
600NH SERIES

TOGGLE SWITCHES - HIGH AMPERAGE - INSULATED LEVER

Solder lug/quick-connect terminals - screw terminals

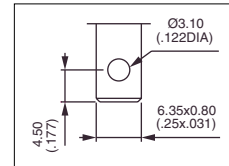
MODEL
STRUCTURE

→ Keyway

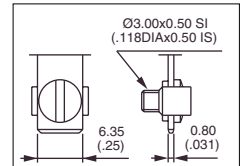


- 2 and 3 maintained or momentary positions
- Solder lug/quick-connect terminals 6,35 x 0,8 (.250 x .031) or screw terminals + clamp
- 1, 2 and 3 pole configurations
- Normalized quick-connect terminals (/3) optional. On request.

600NH/2



600NH



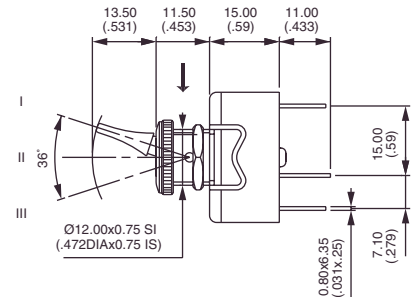
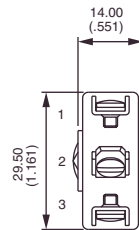
Single pole

→ Keyway



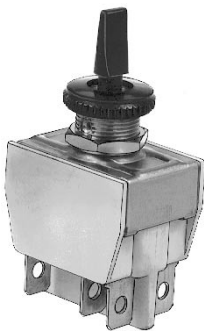
Solder lug	Screw term.
631NH/2	631NH
635NH/2	635NH
636NH/2	636NH
637NH/2	637NH
638NH/2	638NH
639NH/2	639NH

III	II	I
2-1		2-3
ON	-	OFF
MOM	-	ON
ON	-	ON
MOM	OFF	MOM
ON	OFF	MOM
ON	OFF	ON



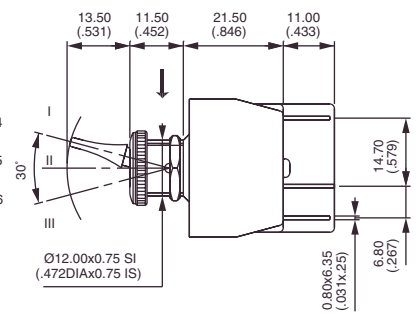
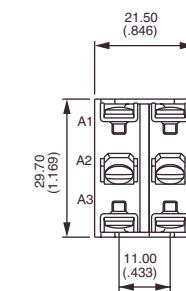
Double pole

→ Keyway



Solder lug	Screw term.
641NH/2	641NH
644NH/2	644NH
644NH/2-1R	644NH-1R*
644NH/2-2R	644NH-2R*
645NH/2	645NH
646NH/2	646NH
647NH/2	647NH
648NH/2	648NH
649NH/2	649NH

III	II	I
2-1		2-3
5-4		5-6
ON	-	OFF
ON	ON	ON
ON	ON	MOM
MOM	ON	MOM
MOM	-	ON
ON	-	ON
MOM	OFF	MOM
ON	OFF	MOM
ON	OFF	ON



* Function 4 : SP in DP case - see specifications.

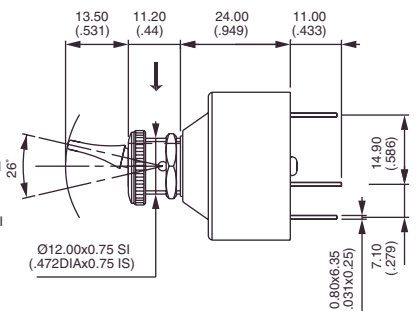
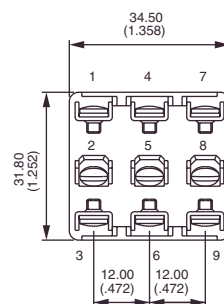
Three pole

→ Keyway



Solder lug	Screw term.
651NH/2	651NH
655NH/2	655NH
656NH/2	656NH
657NH/2	657NH
658NH/2	658NH
659NH/2	659NH

III	II	I
2-1		2-3
5-4		5-6
8-7		8-9
ON	-	OFF
MOM	-	ON
ON	-	ON
MOM	OFF	MOM
ON	OFF	MOM
ON	OFF	ON



6-600NH SERIES

TOGGLE SWITCHES - INSULATED LEVER

MODEL
STRUCTURE

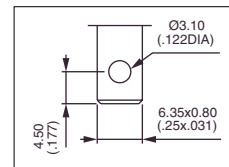
SPECIFICATIONS

- Max. current/voltage rating with resistive load : 6A 250VAC and 125VAC
- Initial contact resistance : 10mΩ max. at 1A 2VDC
- Insulation resistance : 1.000 MΩ min. at 500VDC
- Dielectric strength : 2.500 Vrms 50 Hz min. between terminals
- 2.500 Vrms 50 Hz between terminals and frame
- Electrical life at full load : 10.000 cycles
- Torque : 1,50 Nm (1.10 Ft.lb) max. applied to nut
- Panel thickness : 4,5 mm (.177) max. between 2 nuts
- Operating temperature : -20°C to +55°C
- Hardware supplied : 1 hex nut U166 and 1 knurled nut U522

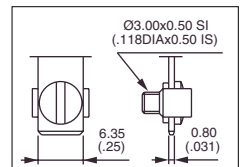
MATERIALS

- Case : melamine/polyester
- Actuator : black polyamide
- Bushing : brass, nickel plated
- Contacts : copper, silver plated

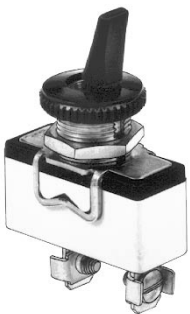
6-600NH/2



6-600NH



Single pole

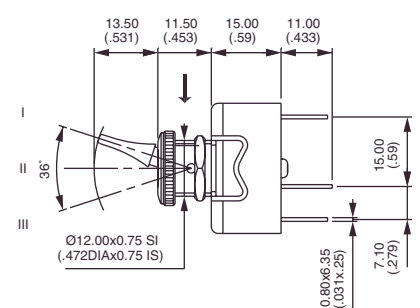
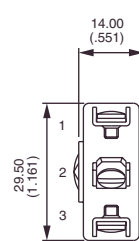


Solder lug
6-631NH/2
6-636NH/2
6-639NH/2

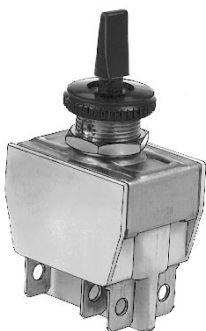
Screw term.
6-631NH
6-636NH
6-639NH

III	II	I
2-1		2-3
ON	-	OFF
ON	-	ON
ON	OFF	ON

→ Keyway



Double pole

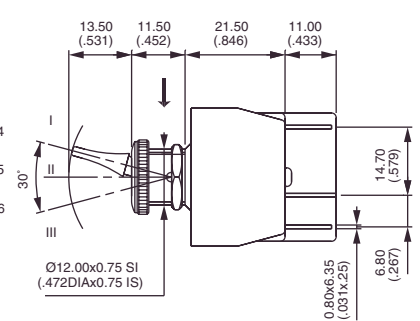
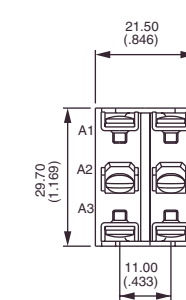


Solder lug
6-641NH/2
6-646NH/2
6-649NH/2

Screw term.
6-641NH
6-646NH
6-649NH

III	II	I
2-1		2-3
5-4		5-6
ON	-	OFF
ON	-	ON
ON	OFF	ON

→ Keyway



Three pole



Solder lug
6-651NH/2
6-656NH/2
6-659NH/2

Screw term.
6-651NH
6-656NH
6-659NH

III	II	I
2-1		2-3
5-4		5-6
8-7		8-9
ON	-	OFF
ON	-	ON
ON	OFF	ON

→ Keyway

