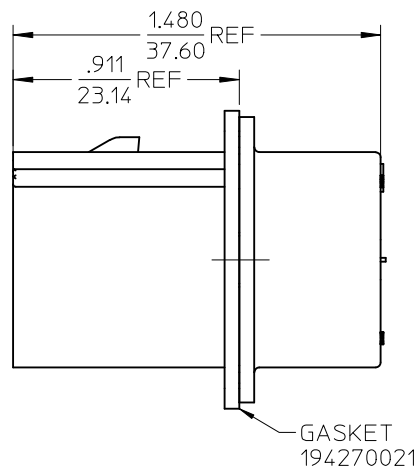
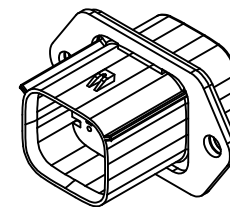


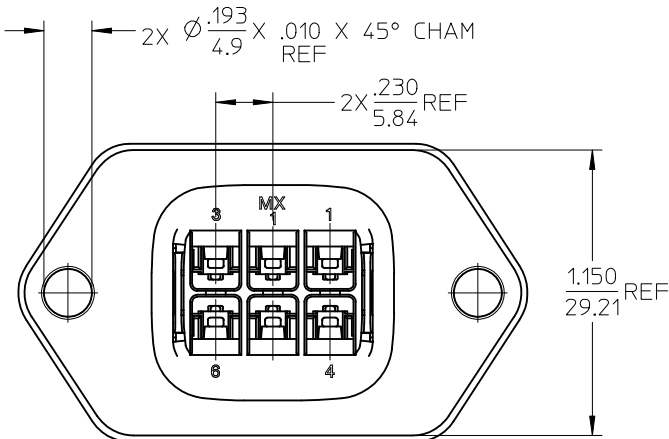
RECOMMENDED PANEL
MOUNT OPENING
MAX PANEL THK .080/2.03



GASKET
194270021



ASSEMBLED VIEW
SCALE 1:1



NOTES:

1. MATERIALS:
HOUSING: POLYESTER (PBT), GLASS FILLED, UL94 V-0, COLOR: BLACK
GASKET: EPDM RUBBER
2. PRODUCT SPECIFICATION: PS-19417-001.
3. PACKAGING SPECIFICATION: PK-19429-001.
4. GASKETS, IF REQUIRED FOR THE ASSEMBLIES, ARE BULK PACKAGED IN A SEPARATE BAG.
5. MATES WITH: 19418 SERIES RECEPTACLE ASSEMBLIES.
6. USE CONNECTOR WITH MALE CRIMP TERMINAL: SERIES 19417.
7. RECOMMENDED MOUNTING HARDWARE: (2) #10 X .62/15.8 LONG PLASTIC THREAD CUTTING SCREWS, RECOMMENDED TORQUE 15-17 IN-LBS.
8. SUGGESTED SOURCE: ITW SHAKEPROOF INDUSTRIAL BOSSCREW OR EQUIVALENT.
9. ASSEMBLY IS ROHS COMPLIANT.

REVISE NOTES	EC NO:	IPG2012-0161	DRWN:	WLEUNG	2012/02/10	CHKD:	DTITUS	2012/02/28	APPR:	DESCRIPTION
B										

QUALITY SYMBOLS	DESCRIPTION
▽ - 0	
▽ - 0	

GENERAL TOLERANCES (UNLESS SPECIFIED)	mm	INCH
4 PLACES	± .005	± .0005
3 PLACES	± .005	± .0005
2 PLACES	± .005	± .0005
1 PLACE	± .005	± .0005
ANGULAR	± 1 °	
DRAFT WHERE APPLICABLE		
MUST REMAIN WITHIN DIMENSIONS		

SCALE	DESIGN UNITS
2:1	INCH
DIMENSION STYLE	
IN/MM	
DRAWN BY	DATE
DMYRICK	04/07/19
CHECKED BY	DATE
JPAWLICK	04/07/19
APPROVED BY	DATE
RDEROSS	04/07/19

194290044	YES
194290028	NO
MATERIAL NUMBER	GASKET
THIRD ANGLE PROJECTION	REVISE ON CAD ONLY
TITLE	
6 WAY PLUG PANEL MOUNT ASSEMBLY W/O BOSS 22-14 AWG	
MOLEX INCORPORATED	
MATERIAL NO.	DOCUMENT NO.
SEE CHART	SD-19429-012
SHEET NO.	1 OF 1