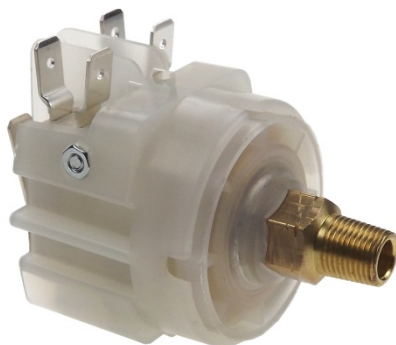
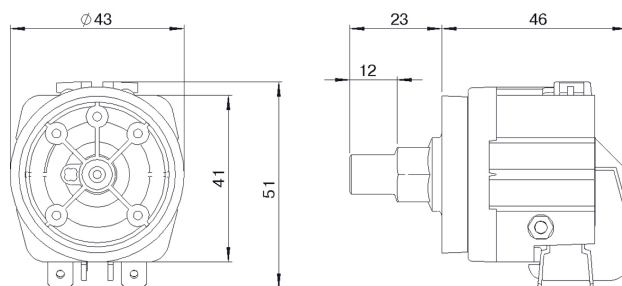


6741/6742 Medium Pressure Switch

PRODUCT IMAGE



LINE DRAWING



BENEFITS

- these switches have been designed primarily for the OEM manufacturer who requires high reliability
- UL recognised versions available
- double pole switching available as a 6742
- wide choice of microswitch options including tag configurations
- high performance repeatability

SPECIFICATIONS

standards/approvals	UL 508 specific models only
degree of protection	n/a
connection method	1/8" BSPT & NPT Brass or back & side entry spout, 4mm dia.
electrical rating	see table below
contact configuration	see table below
pressure range	n/a
operating temperature	-5°C to +70°C
body material	thermoplastic
Weight	0.05Kg 6741 & 0.085Kg 6742
additional information	setting accuracy $\pm 10\%$ for very low power circuits, gold contact versions are available upon request alternative diaphragm & spring materials available upon request

6741/6742

Medium Pressure Switch

SUITABLE FOR USE WITH THE FOLLOWING MEDIA:

	6741-20/30/40/50/60	6741-70/80/90
Acetone	☑	☑
Ammonia (Liquid)	☑	☑
Amyl Alcohol to 20°C	☑	☑
Automotive Brake Fluid	☑	☑
Beer	☑	☑
Benzyl Alcohol	✗	☑
Butane	✓	✓
Carbon Dioxide – Dry	✓	✓
Citric Acid	✓	✓
Copper Sulphate (Sol.)	☑	☑
Compressed Air	✓	✓
Cutting Oil	☑	✓
Diesel Oil	☑	✓
Detergent Solution	☑	✓
Fuel Oil	☑	✓
Glycol	✓	✓
Hydraulic Oil	☑	✓
Hydrogen	✓	✓
Lubricating Oil	☑	✓
Milk	☑	☑
Mineral Oil	☑	✓
Natural Gas	✓	✓
Nitric Acid (Dil.)	✗	✓
Oxygen to 70°C	✓	✓
Petrol	☑	✓
Plating Solution (Chrome)	☑	☑
Salt Water	☑	☑
Sewage	☑	✓
Sulphur Dioxide	✗	☑
Turpentine	☑	✓
Vinegar	☑	☑
Water	✓	✓

✓ = Recommended

☑ = Suitable with modification

✗ = Not suitable

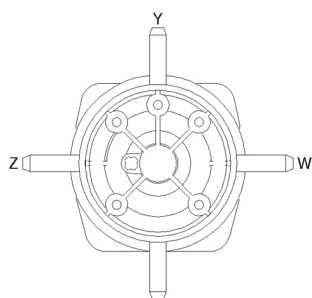
6741/6742

Medium Pressure Switch

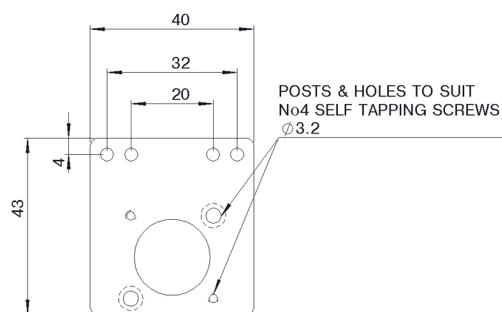
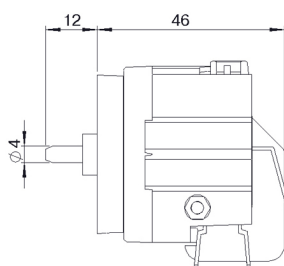
Model No		6741-20/30/40/50/60					6741-70/80/90		
Pressure Range (mbar)	Min	100	200	340	540	1,080	1,700	3,100	4,140
	Max	240	370	680	1220	2,040	3,790	5,170	8,270
Body withstand pressure (mbar)		2,550					10,000		
Connecting tube reference		2311-01 / 2311-08 to suit 4mm dia. spout							
Diaphragm		Neoprene					Nitrile		
Mechanical Life		1 x 10 ⁶ cycles							
Spring		Spring Steel							

Electrical Data				
Contact Configuration		6741-SPCO		6742-DPCO
Contact Plating		Silver		
Electrical Life		2 x10 ⁵ @ 10A 1 x 10 ⁴ @ 21A		
Electrical Rating		Max. Electrical Load		
	Voltage (V)	Resistive (A)	Inductive (A)	Motor (Pf0.75)
AC	125	21	8	1HP
AC	250	21	8	1HP
DC	6	21	21	
DC	12	15	15	
DC	24	8	7	
DC	60	1	0.5	
DC	110	0.5	0.1	
DC	220	0.25	0.1	

6741/6742 Medium Pressure Switch



Non standard tube connection
positions for 4 Dia spout



Mounting Plate & 2 Screws
6050-6000-0001