

PRODUCT NUMBER

20020108-XXXXXXLF

20020108-□□□□A0□LF

PITCH

C : 3.50 mm
D : 3.81 mm
G : 5.00 mm
H : 5.08 mm

POLES



02: 2 POLES
03: 3 POLES
04: 4 POLES

24: 24 POLES

LF : DENOTED ROHS COMPATIBLE

1 : STANDARD PRODUCT
W/ BOX PACKING


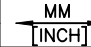

HOUSING CODE

PROPERTY TABLE					
FCI SERIES NAME		06-350	06-381	06-500	06-508
PITCH (mm)		3.50	3.81	5.00	5.08
VOLTAGE RATING (VAC)		300	300	300	300
CURRENT RATING (A)	cULus	10	10	12	12
	VDE	10.5	10.5	NA	NA
WITHSTANDING VOLTAGE (kV)	cULus	1.6	1.6	1.6	1.6
	VDE	2.5	2.5	NA	NA
OPERATING TEMP. (°C)		-40~+115	-40~+115	-40~+115	-40~+115
SOLDERING TEMP. (°C)		250±10 (5 sec.)	250±10 (5 sec.)	250±10 (5 sec.)	250±10 (5 sec.)
POLES AVAILABLE		02~24	02~24	02~24	02~24
SAFETY CERTIFICATE					

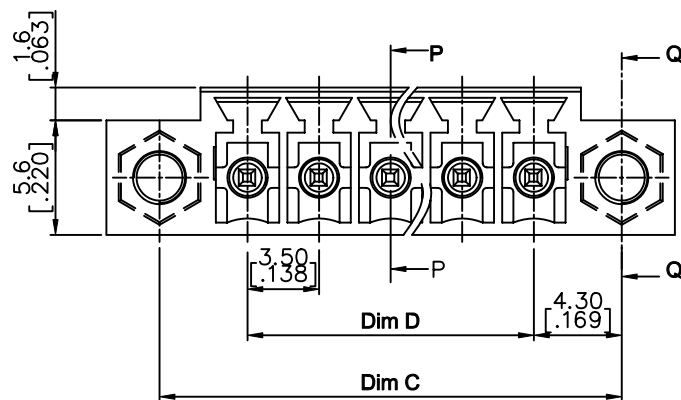
CODE	COLOR	AVAILABILITY
1	GREEN(RAL 6018/T)	STANDARD
2	BLACK	ON REQUEST ONLY
3	GREY(RAL 7004/P)	ON REQUEST ONLY
4	BLUE(RAL 5015/A)	ON REQUEST ONLY

NOTES:

- MATERIALS
1-1 HOUSING: THERMALPLASTIC RESIN, UL 94V-0 RATED.
1-2 TERMINAL: COPPER ALLOY, TIN PLATED.
- PRODUCT SPECIFICATION REFER TO FCI GS-12-625.
- BOXED PACKAGING,
DETAILED PRODUCT PACKING SPECIFICATION REFER TO FCI GS-14-1394.
- FCI, SAFETY CERTIFICATE LOGO AND SERIES NAME TO BE SHOWN ON PRODUCT SURFACE.
- THE PRODUCTS WHERE THE PART NUMBER END IN "LF" MEET THE EUROPEAN UNION DIRECTIVE AND OTHER COUNTRY REGULATIONS AS DESCRIBED IN GS-22-008.
- RECOMENDED SOLDERING PROCESS BY WAVE SOLDER.

mat'l. code				surface ASME Y14.5			tolerance ASME Y14.5			projection 		product family TERMINAL BLOCK			
ltr	ecn no	dr	date	tolerances unless otherwise specified								title			
A	T10-0062	WL	050710	angles to be used	X.±0.5[.020]					TERMINAL BLOCK					
B	T10-0155	WL	093010		X.X±0.3[.012]					PLUGGABLE, SOCKET, SIGNAL, STRAIGHT					
C	T10-0187	WL	121410		X'±1"			scale		W/FLANGE					
D	T11-0019	WL	040611		dr	WENDY CHEN	042310				sheet 1 of 5		size		
E	T-004860	WL	080411	enr	JASON HSU	042310		20020108			A4				
				chr	GARY HSIEH	042310									
				appd	JOSEPH HSIA	042310									
sheet index		revision sheet		E	E	E									
				1	2	3	4	5							

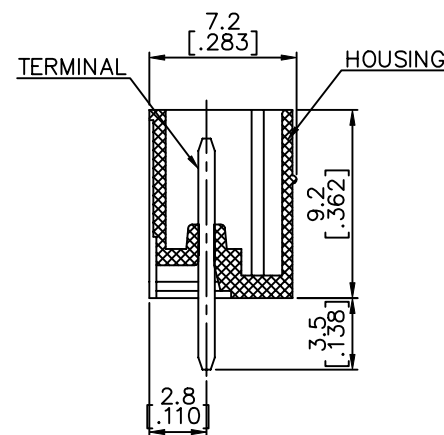
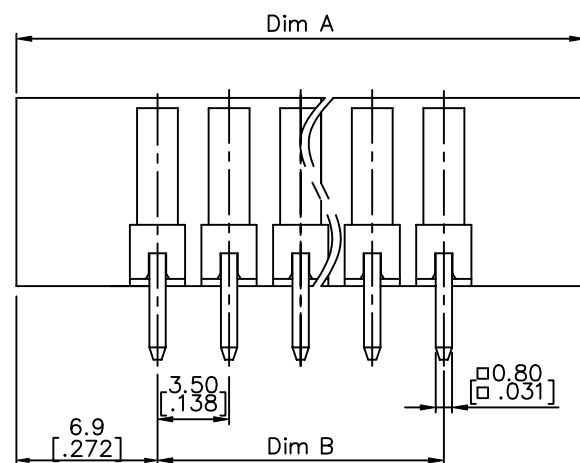
PRODUCT NUMBER	SERIES NAME	PITCH
20020108-CXXXXXL	06-350	3.50 mm



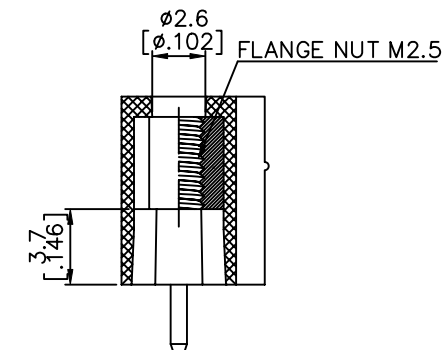
N= Number of poles

Dim A	$(N-1)*3.5[.138]+13.8[.543]$
Dim B	$(N-1)*3.5[.138]$
Dim C	$(N-1)*3.5[.138]+8.6[.339]$
Dim D	$(N-1)*3.5[.138]$

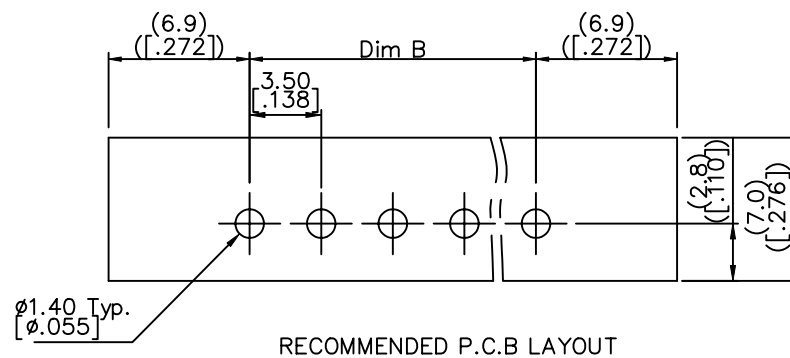
Poles	Tolerance
2p-6p	$\pm 0.15[.006]$
7p-12p	$\pm 0.20[.008]$
13p-16p	$\pm 0.25[.010]$
17p-24p	$\pm 0.30[.012]$



SECTION P-P



SECTION Q-Q

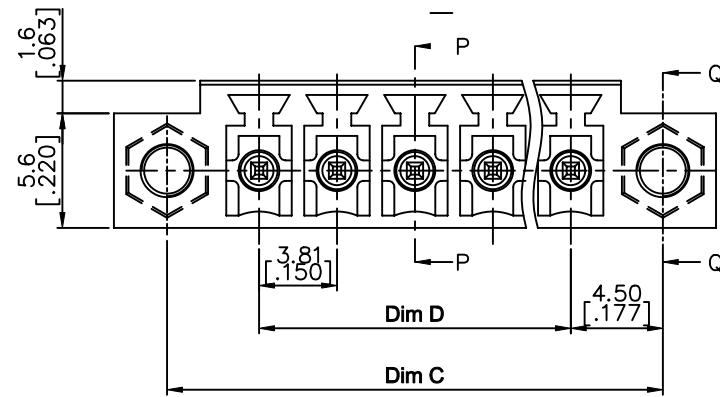


RECOMMENDED P.C.B LAYOUT

mat'l. code	surface ASME Y14.5	tolerance ASME Y14.5	projection MM INCH	product family TERMINAL BLOCK
ltr	ecn no	dr	date	title TERMINAL BLOCK PLUGGABLE, SOCKET, SIGNAL, STRAIGHT W/FLANGE
E				dwg no 20020108
				sheet 2 of 5
				size A4
				type CUSTOMER Drawing
sheet index	revision	sheet		

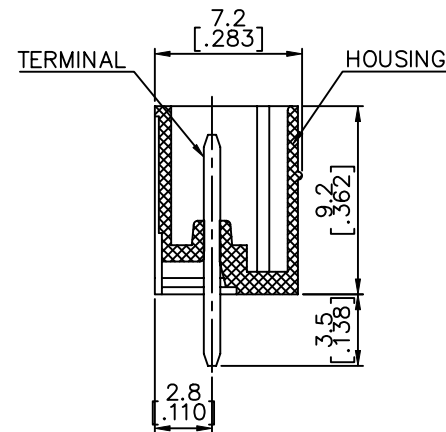
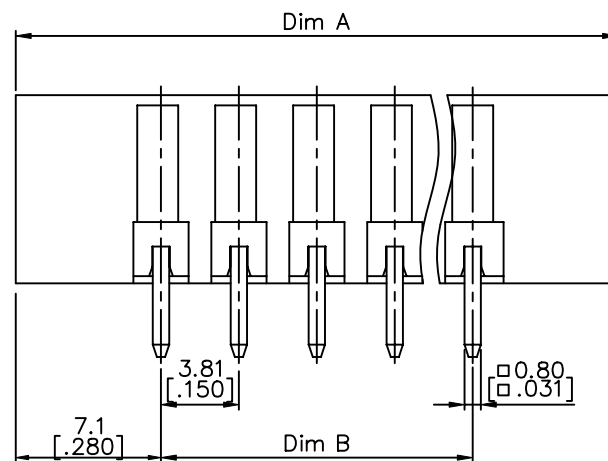
N= Number of poles

PRODUCT NUMBER	SERIES NAME	PITCH
20020108-DXXXXXXLF	06-381	3.81 mm

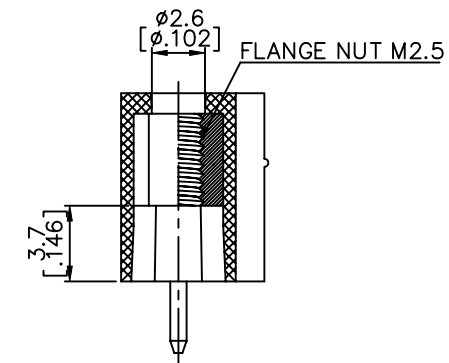


Dim A	$(N-1)*3.81[.150]+14.2[.559]$
Dim B	$(N-1)*3.81[.150]$
Dim C	$(N-1)*3.81[.150]+9.0[.354]$
Dim D	$(N-1)*3.81[.150]$

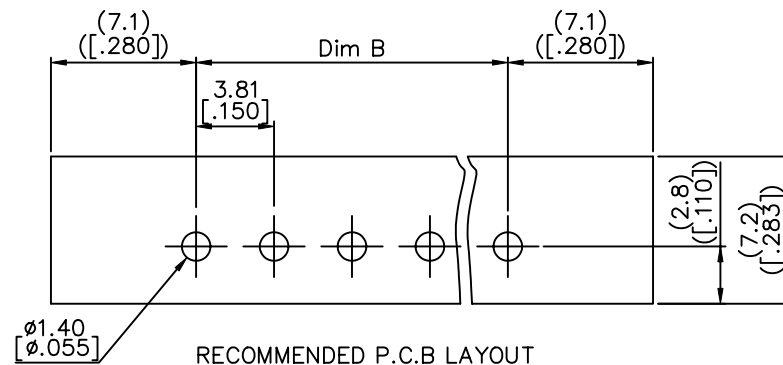
Poles	Tolerance
2p-6p	$\pm 0.15[.006]$
7p-12p	$\pm 0.20[.008]$
13p-16p	$\pm 0.25[.010]$
17p-24p	$\pm 0.30[.012]$

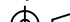



SECTION P-P

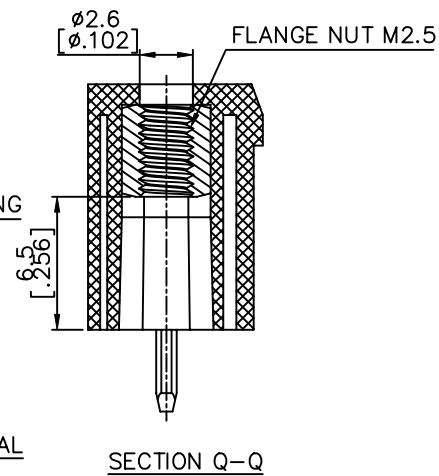
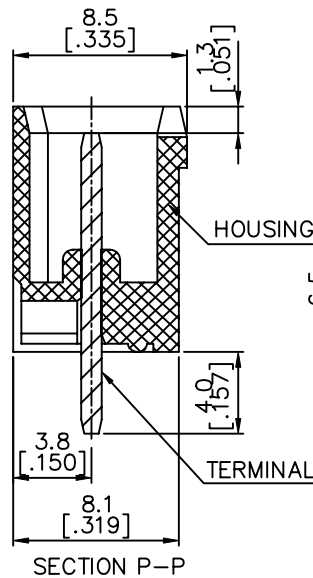
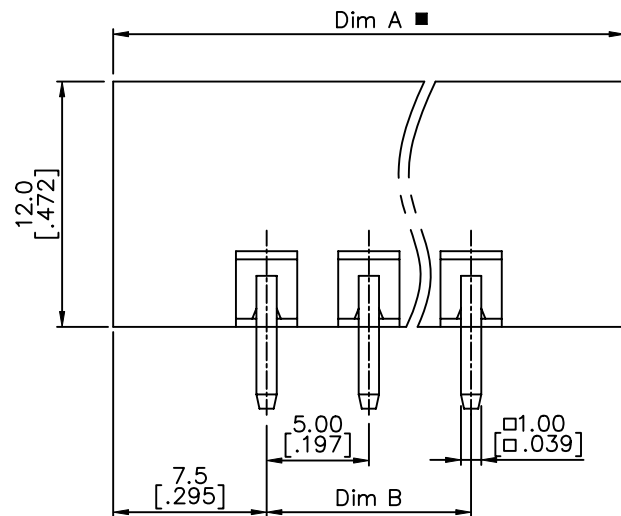
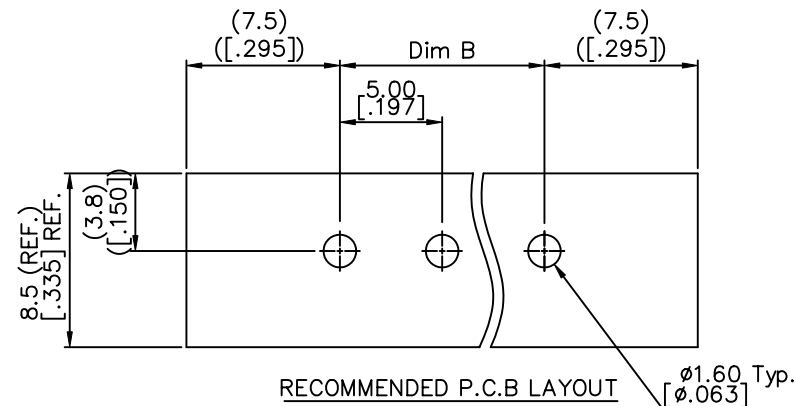
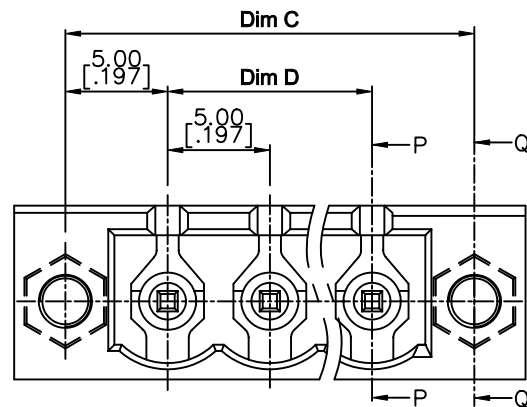


SECTION Q-Q



mat'l. code				surface ASME Y14.5 ✓		tolerance ASME Y14.5		projection 		product family TERMINAL BLOCK			
ltr ecn no dr date				tolerances unless otherwise specified						title			
E				angles		lineal		MM [INCH]		TERMINAL BLOCK			
										PLUGGABLE, SOCKET, SIGNAL, STRAIGHT			
				X'±1"		X.XX±0.1[.004]		scale		W/FLANGE			
				dr WENDY CHEN		042310				dwg no		sheet 3 of 5 size	
				enr JASON HSU		042310				20020108		A4	
				chr GARY HSIEH		042310							
				appd JOSEPH HSIA		042310							
sheet index		revision sheet											

PRODUCT NUMBER	SERIES NAME	PITCH
20020108-GXXXXXL	06-500	5.00 mm



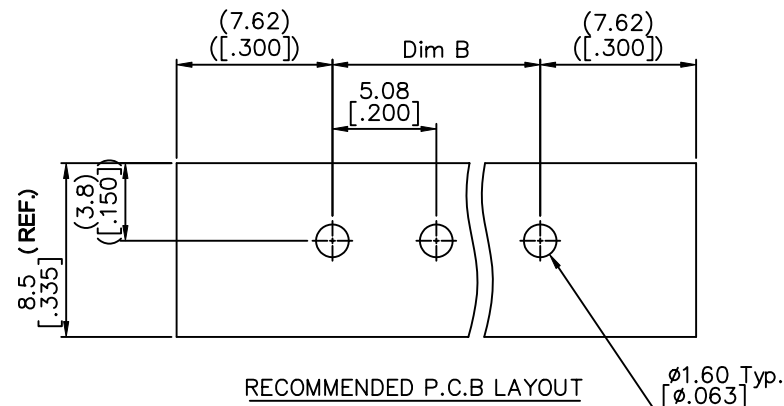
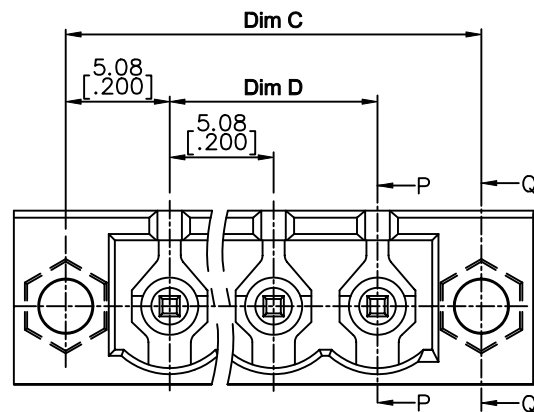
N= Number of poles

Dim A	(N+2)*5.0
Dim B	(N-1)*5.0
Dim C	(N+1)*5.0
Dim D	(N-1)*5.0

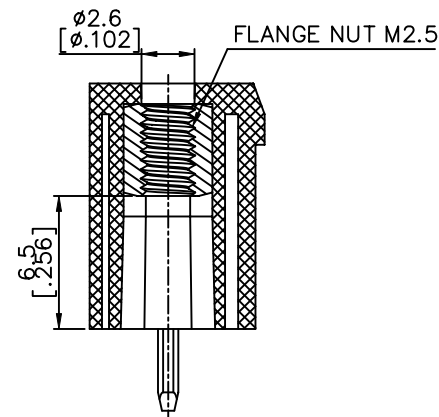
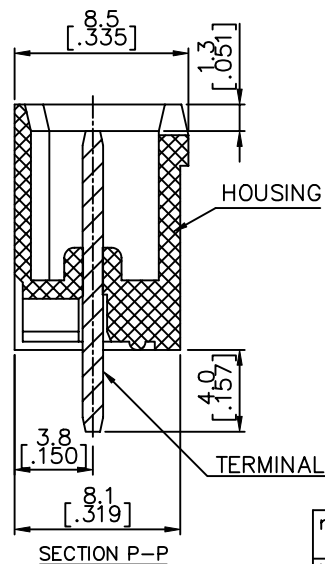
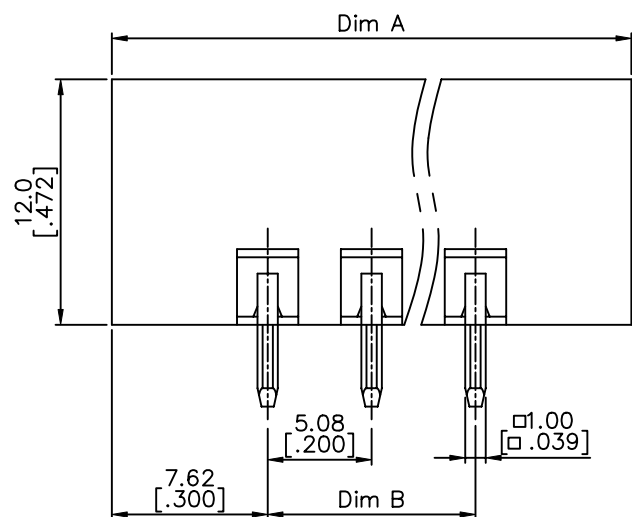
Poles	Tolerance
2P-6P	±0.15
7P-12P	±0.20
13P-18P	±0.30
19P-24P	±0.40

mat'l. code	surface ASME Y14.5	tolerance ASME Y14.5	projection	product family
ltr	ecn no	dr	date	TERMINAL BLOCK
E				title
				TERMINAL BLOCK
				PLUGGABLE, SOCKET, SIGNAL, STRAIGHT
				W/FLANGE
				dwg no
				20020108
				sheet 4 of 5
				size
				A4
				type
				CUSTOMER Drawing
sheet index	revision	sheet		

PRODUCT NUMBER	SERIES NAME	PITCH
20020108-HXXXXXXLF	06-508	5.08 mm



RECOMMENDED P.C.B LAYOUT

Ø1.60 Typ.
Ø.063

N= NUMBER OF POLES

Dim A	(N+2)*5.08
Dim B	(N-1)*5.08
Dim C	(N+1)*5.08
Dim D	(N-1)*5.08

Poles	Tolerance
2P-6P	±0.15
7P-12P	±0.20
13P-18P	±0.30
19P-24P	±0.40

mat'l. code				surface ASME Y14.5	tolerance ASME Y14.5	projection	product family TERMINAL BLOCK
ltr	ecn	no	dr	tolerances unless otherwise specified			title
E				angles	X.±0.5[.020] X.X±0.3[.012] X*±1° X.XX±0.1[.004]	MM [INCH]	TERMINAL BLOCK PLUGGABLE, SOCKET, SIGNAL, STRAIGHT W/FLANGE
				dr	WENDY CHEN 042310	scale	sheet 5 of 5 size
				enr	JASON HSU 042310		20020108 A4
				chr	GARY HSIEH 042310		
				appd	JOSEPH HSIA 042310		
sheet index	revision sheet						type CUSTOMER Drawing