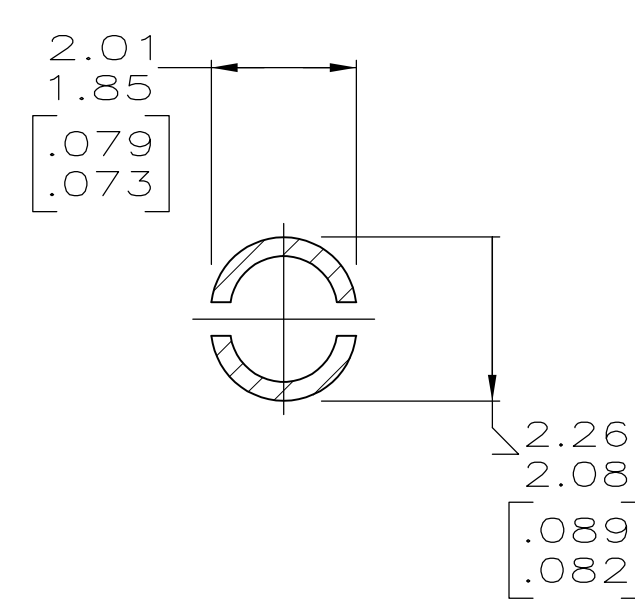
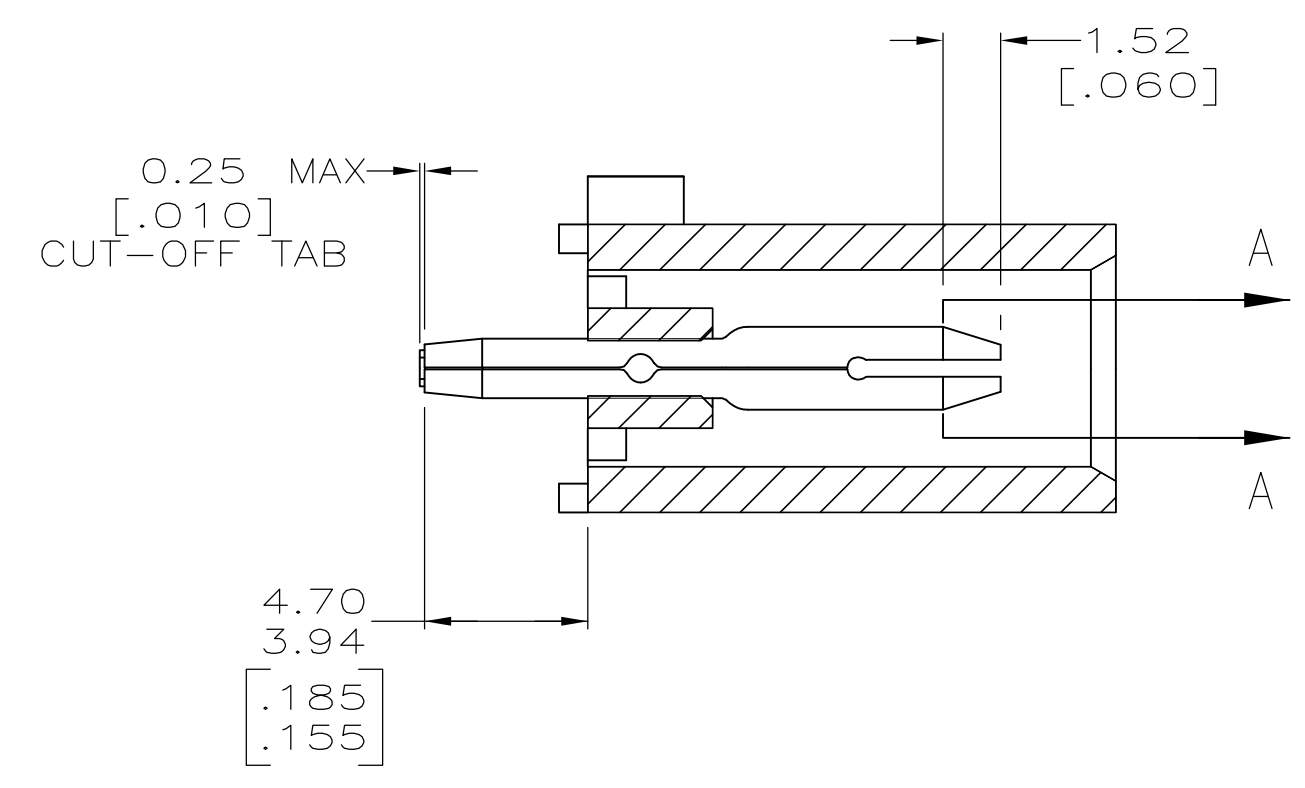
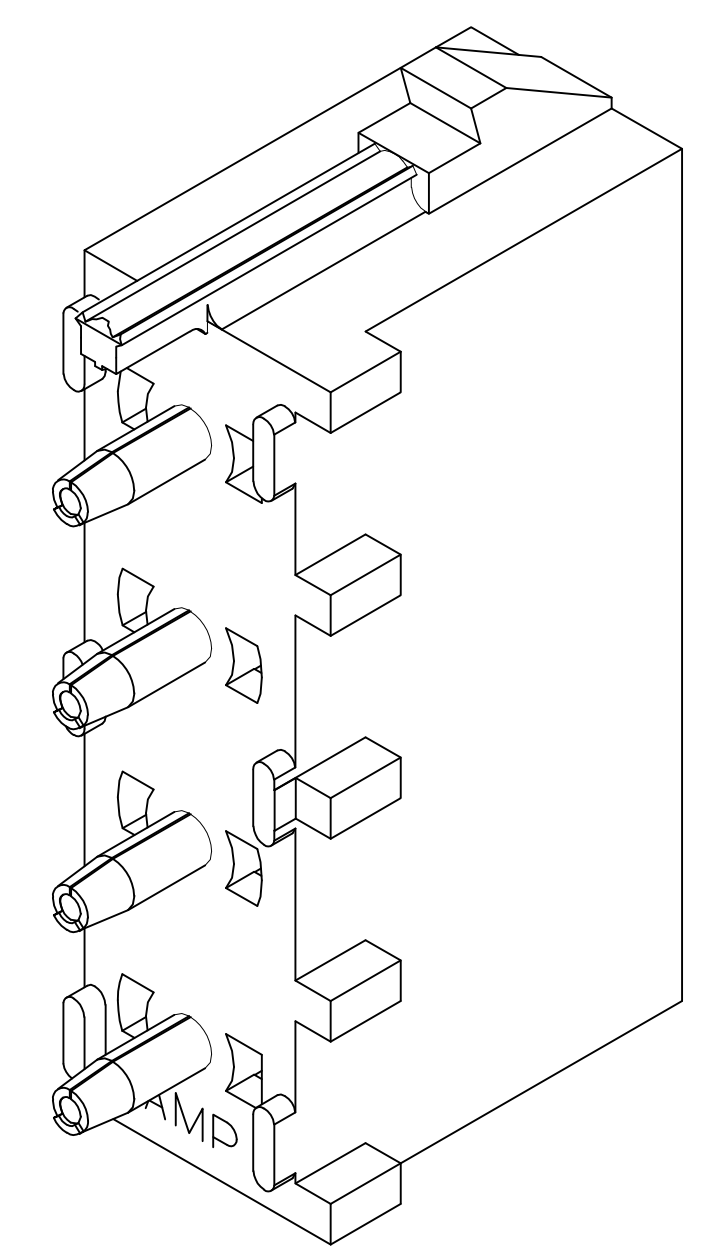
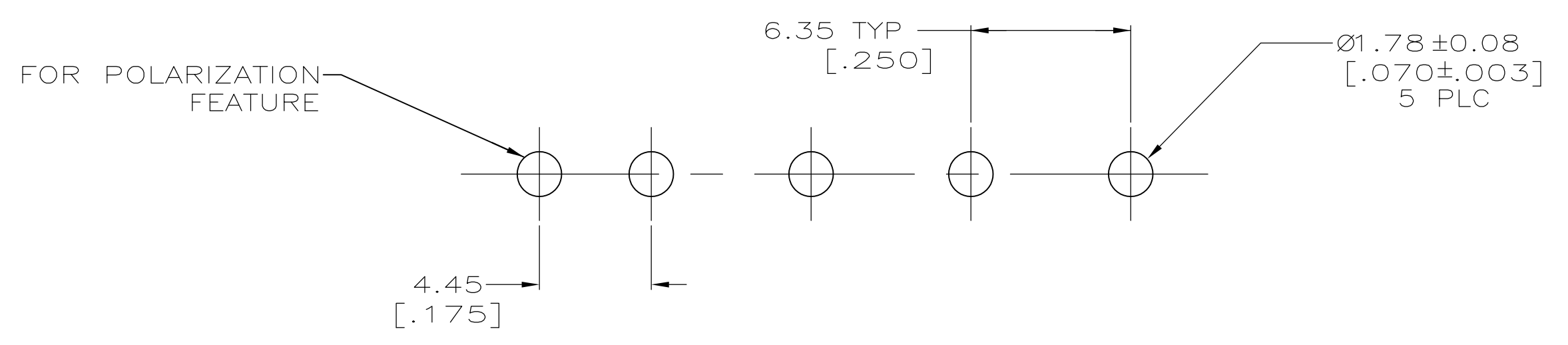
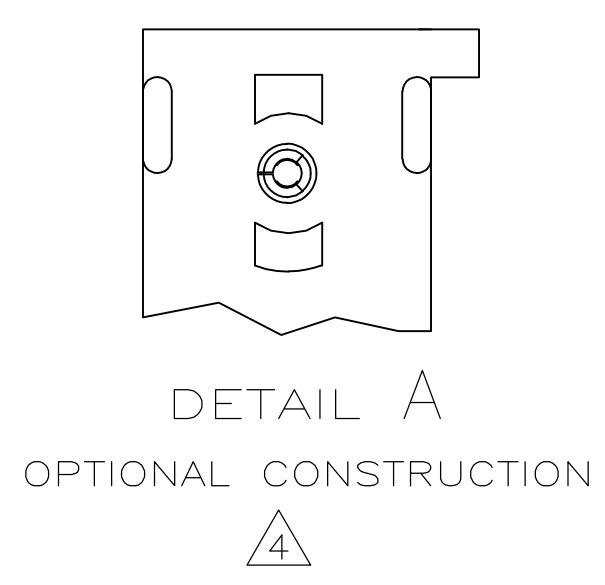


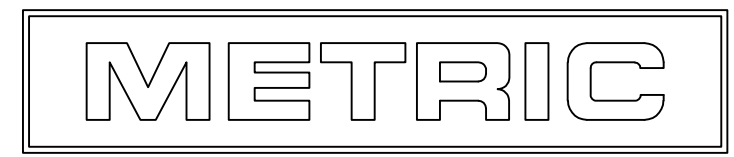
- PARTS COMPLY TO AMP SOLDERABILITY SPECIFICATION 109-11-3.
- CIRCUIT IDENTIFICATION CHARACTERS ARE ADJACENT TO THE INDICATED CAVITIES, BUT LOCATION AND ORIENTATION MAY DIFFER FROM PRINT.
- DIMENSIONS IN BRACKETS ARE IN INCHES.
- DRAIN HOLES LOCATED AS SHOWN. OPTIONAL CONSTRUCTION- ALL DRAIN HOLES LOCATED 90° AS SHOWN IN DETAIL A.
- FLAMMABILITY V-2 FOR THICKNESS 0.38mm, 0.75mm, 1.5mm AND 3.0mm PER IEC 60695-11-10.
- GLOW-WIRE FLAMMABILITY ( GWFI ) 800°C FOR THICKNESS 0.38mm AND 0.75mm PER 60695-2-12.
- GLOW-WIRE FLAMMABILITY ( GWFI ) 960°C FOR THICKNESS 1.5mm AND 3.0mm PER 60695-2-12.
- GLOW-WIRE IGNITION ( GWIT ) 825°C FOR THICKNESS 0.38mm, 0.75mm, 1.5mm AND 3.0mm PER 60695-2-13.
- PRELIMINARY - NOT FOR PRODUCTION


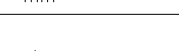


SECTION A-A  
SCALE 10:1



RECOMMENDED MOUNTING HOLE PATTERN  
FOR 1.57 [.062] THICK P.C. BOARD



|   |  |  |  |  |  |
|---|--|--|--|--|--|
| PHOSPHOR BRONZE, PRE-TIN  |  | NYLON, UL94V-2,NATURAL   |  | <div><div>9</div>1586965-2</div>   |  |
| CONTACT MATERIAL / FINISH   |  | HOUSING MATERIAL/COLOR   |  | PART NO.   |  |
| THIS DRAWING IS A CONTROLLED DOCUMENT.  |  | <div>DWN19DEC11<br/>J. RUTH</div> <div>CHK19DEC11<br/>TOM MICHELUTTI</div> <div>APRD19DEC11<br/>TOM MICHELUTTI</div> |  | <div><div></div>TE Connectivity</div> |  |
| DIMENSIONS:<br>mm   |  | TOLERANCES, UNLESS OTHERWISE SPECIFIED:  |  | NAME   |  |
|  |  | Ø PLC ± —<br>2 PLC ± 0.13 [ .005]<br>5 PLC ± —<br>8 PLC ± —<br>ANGLES ± —° ' 30"                                     |  | PRODUCT SPEC<br>—<br>APPLICATION SPEC<br>—   |  |
| MATERIAL  |  | FINISH   |  | SIZE   |  |
| SEE TABLE   |  | SEE TABLE  |  | CAGE CODE  |  |
|   |  | WEIGHT   |  | DRAWING NO.  |  |
|   |  | —  |  | A100779  |  |
|   |  | CUSTOMER DRAWING   |  | C1586965   |  |
|   |  |  |  | SCALE  |  |
|   |  |  |  | 5:1  |  |
|   |  |  |  | SHEET  |  |
|   |  |  |  | 1 of 1   |  |
|   |  |  |  | REV  |  |
|   |  |  |  | B1   |  |