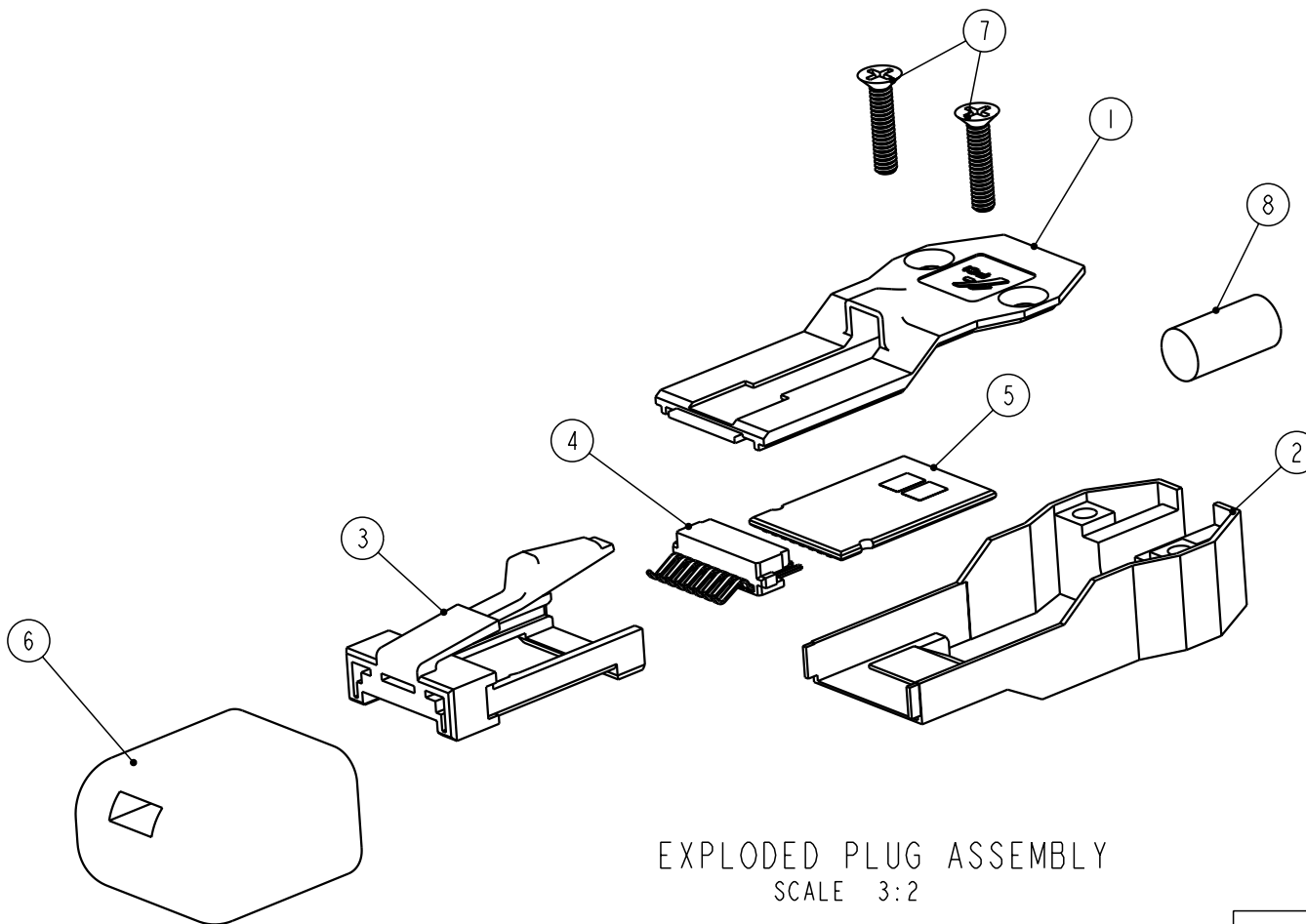


Tous droits strictement reserves. Reproduction ou communication a des tiers interdite sous quelque forme que ce soit sans autorisation écrite du propriétaire. Propriete de c FCI. Droits de reproduction FCI.



All rights strictly reserved. Reproduction or issue to third parties in any form whatever is not permitted without written authority from the proprietor. Property of FCI. Copyright FCI.

PRODUCT NUMBER  
SEE TABLE



EXPLODED PLUG ASSEMBLY  
SCALE 3:2

CONFIDENTIAL

mat'l code				See Notes		tolerances unless otherwise specified		CUSTOMER		FCI ELECTRONICS	
lfr	ecn no.	dr	date					COPY		www.fciconnect.com	
A	V10421	GIP	2/5/01	linear		0.X ±0.2		projection		title CONNECTOR KIT f/ DIE CAST PLUG ASSEMBLY	
B	V11556	GIP	6/12/01			0.XX ±0.10					
				angles		0.XXX ±0.050					
						0° ±2°				product family MetaGig(tm)	
				dr	G.PETERS	2/5/01		MM			
				enrg	D.CASEY	2/1/01					
				chr	G.PETERS	2/5/01		scale		size A	
				appd	R.MACMULLIN	2/5/01		1:1			
sheet index		revision sheet	B 1	B 2	A 3					code 213 sheet 1 of 3	

Pro/E

3

cage code  
22526

4

PDM: Rev:B

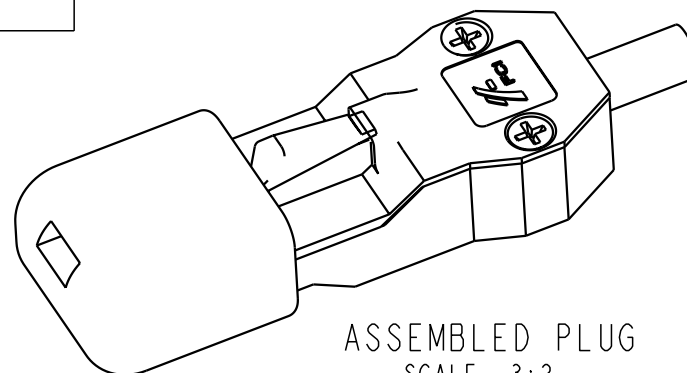
STATUS: Released

Printed: Dec 09, 2007

PRODUCT NUMBER	DESCRIPTION
54630-001	CABLE CONNECTOR KIT(GXT CONTACTS, HSG. COLOR, BLACK)
54630-002	CABLE CONNECTOR KIT(30Au CONTACTS, HSG. COLOR, NATURAL)

EACH KIT TO CONSIST OF:(UNLESS OTHERWISE SPECIFIED)

No.	PART NUMBER	DESCRIPTION
1	53481-001	TOP DIE CAST COVER
2	53482-001	BOTTOM DIE CAST COVER
3	53483-001	CABLE LATCH HOUSING
4A	55900-001	INSERT ASSY. f/GXT PLTD CONTACTS, HSG.COLOR: BLK.
4B	55900-002	INSERT ASSY. f/30Au PLTD CONTACTS, HSG. COLOR, NAT.
5	n/a	PCB (NOT FURNISHED BY FCI)
6	73595-001	PLUG COVER
7	53486-001	#2-56UNC FLAT HD. SCREWS, S.S 8mm LG.
8	n/a	CABLE (NOT FURNISHED BY FCI)



ASSEMBLED PLUG  
SCALE 3:2

CONFIDENTIAL

mat'l code				See Notes		tolerances unless otherwise specified		CUSTOMER		FCI ELECTRONICS	
lfr	ecr no.	dr	date					COPY		www.fciconnect.com	
B				linear		0.X ±0.2		projection		title	CONNECTOR KIT f/ DIE CAST PLUG ASSEMBLY
						0.XX ±0.10				product family	MetaGig(fm)
				angles		0.XXX ±0.050				size	213
						0° ±2°				dwg no	sheet
				dr	G.PETERS	2/5/01		MM		A	54630
				enr	D.CASEY	2/11/01		scale	1:1		2
				chr	G.PETERS	2/5/01					
				appd	R.MACMULLIN	2/5/01					
sheet	revision										
index	sheet										

Pro/E

cage code 22526

PDM: Rev:B

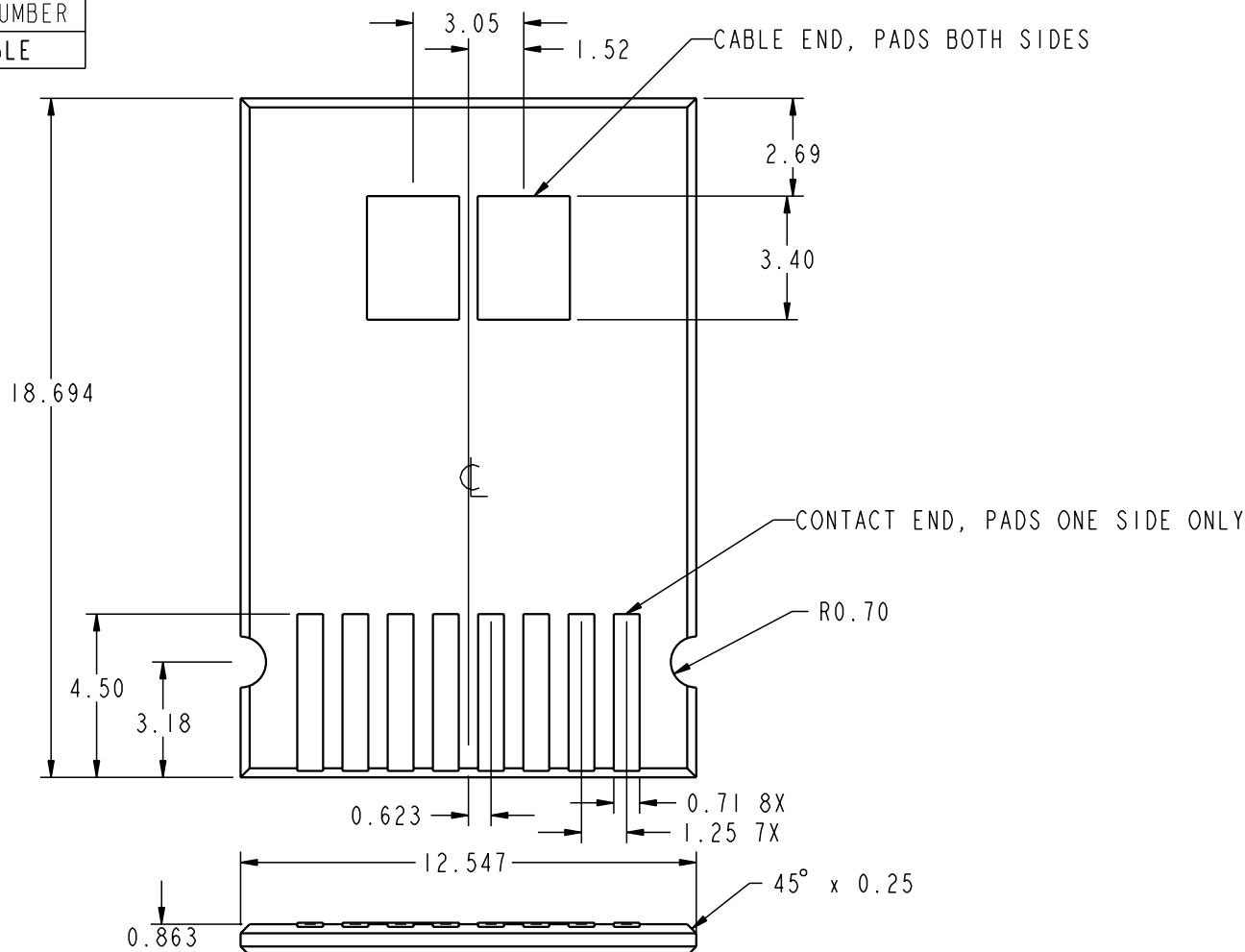
STATUS:Released Printed: Dec 09, 2007

Tous droits strictement reserves. Reproduction ou communication a des tiers interdite sous quelque forme que ce soit sans autorisation écrite du propriétaire. Propriete de c FCI. Droits de reproduction FCI.



All rights strictly reserved. Reproduction or issue to third parties in any form whatever is not permitted without written authority from the proprietor. Property of FCI. Copyright FCI.

PRODUCT NUMBER  
SEE TABLE



TYPICAL PCB PAD LAYOUT  
SCALE 5:1

CONFIDENTIAL

mat'l code				See Notes		tolerances unless otherwise specified		CUSTOMER		FCI ELECTRONICS	
								COPY		www.fciconnect.com	
lfr				ecr no.		dr		projection		title	
A								MM		CONNECTOR KIT f/	
								1:1		DIE CAST PLUG ASSEMBLY	
										product family	
										MetaGig(fm)	
										code	
										213	
										sheet	
										3	
sheet				revision							
index				sheet							

Pro/E

cage code 22526

PDM: Rev:B

STATUS: Released Printed: Dec 09, 2007