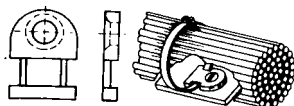
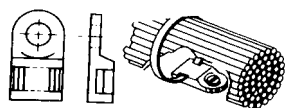
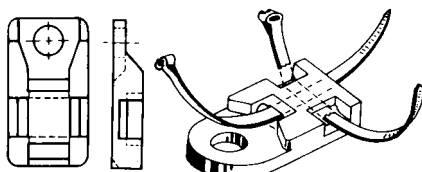


Thomas & Betts

Cable Tie Mounting Bases



These miniature mounting bases are ideal for high-density packaging. Simply slip Ty-Rap® tie under slot in fastened mount, and complete tie in usual manner. Check chart for mounting details.



TC826-TB

TC826-TB

Miniature Mounting Bases

Std. Cat. No.	Bulk Pkg. Cat. No.	Mounting Method	Maximum Tie Width Accom.	Width (in.)	Length (in.)	Std. Pkg.	Bulk Pkg.
TC502	TC102	#8 screw	.190	.500	.750	100	1000
—	TC104	#5 screw	.091	.316	.406	—	1000
—	TC804	#2 screw	.091	.316	.406	—	1000
—	TC112-TB	#8 screw	.190	.375	.750	—	1000
—	TC812-TB	#10 screw	.190	.375	.750	—	1000
—	TC814-TB	#5 screw	.190	.375	.750	—	1000

Threaded insert permits screw to come from outside of mounting surface.



Two-Direction Mounting Base

Std. Cat. No.	Bulk Pkg. Cat. No.	Mounting Method	Maximum Tie Width Accom.	Width (in.)	Length (in.)	Std. Pkg.	Bulk Pkg.
—	TC826-TB	#8 screw	.190	.500	1	—	1000
TC5828	TC828-TB	#8 screw	.190	.390	.875	100	1000

The TC826-TB mounting base can be used to tie bundles running parallel or perpendicular to length of base.

The TC828-TB mounting plate also handles ties installed in either direction and is somewhat smaller than TC826.



In-Line Base

Bulk Cat. No.	Mounting Method	Maximum Tie Width Accom.	Width (in.)	Length (in.)	Bulk Pkg.
TC815-TB	#10 screws	.301	.750	1.125	500

A standard two-hole base that installs in-line with the wire bundle which conceals it.



Single-Bundle Mounting Base

Std. Cat. No.	Bulk Cat. No.	Mounting Method	Maximum Tie Width Accom.	Width (in.)	Length (in.)	Std. Pkg.	Bulk Pkg.
—	TC101	#10 screws	.190	.500	2.00	—	1000
TC503	TC103	¼ screws	.301	.625	3.08	100	500

The TC101 and TC103 nylon bases provide a mounting range for bundles from 1/4" through 4" in diameter. One mounting hole is slotted to permit adjustment of the bundle position up to the time of actual bundle installation.

Thomas & Betts