

SPECIFICATIONS

Mechanical

Contact Normal Force: 0.03 to 0.05kg

Durability: 10000 Cycles

Electrical

Current Rating: 0.5A

Contact Resistance: 40mΩ max.

Dielectric Withstanding Voltage: 500V AC/1 min.

Insulation Resistance: 1000MΩ min.

Physical

Housing: Thermoplastic, UL 94V-0 rated in Ivory Color

Contact: Copper alloy

Plating: See "ORDERING INFORMATION"

Solder Pad: Copper alloy

Operating Temperature: -55℃ to +85℃

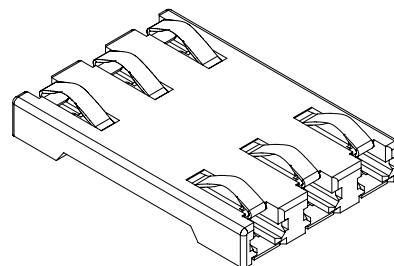
SIM Card Connector

WL Series

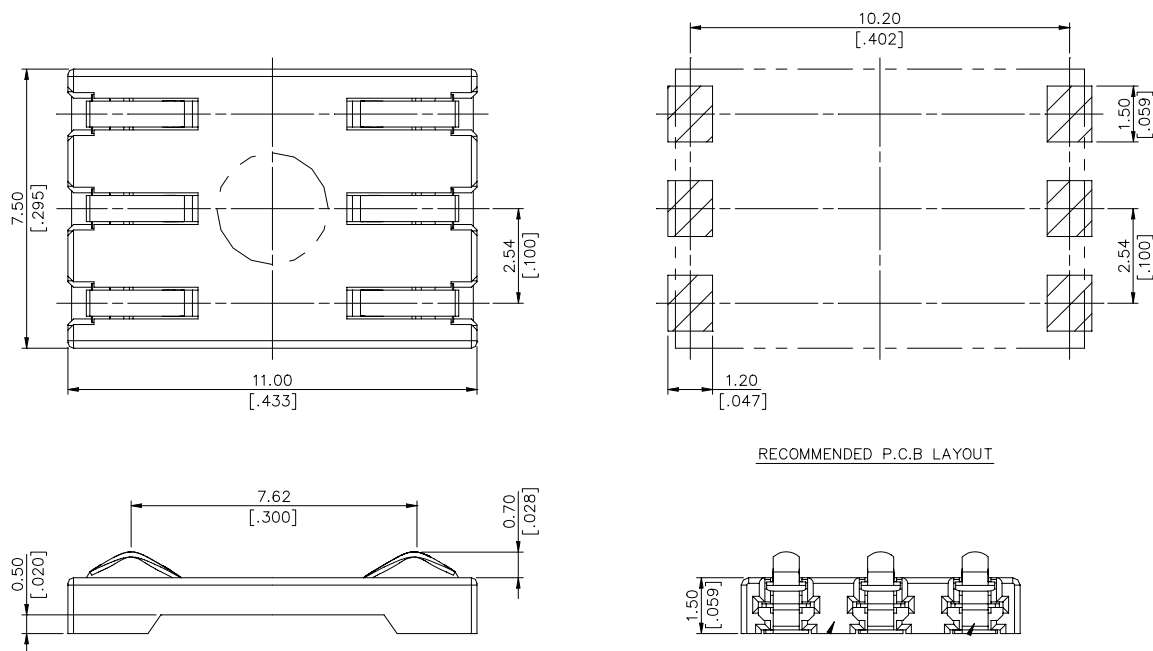
SMT Type

2.54mm [.100"] Pitch

6 Pos.



DRAWING



ORDERING INFORMATION

PRODUCT NO.: WL 6 15 A 3 - A01 - TR

SIM Card Connector

No. of Pos.
6=6 Pos.

Body Height
15=1.50 mm

Package Type
TR=Tape And Reel

Extension Code

Contact Plating
3=30μ" Gold

Upper Cover Type
A=Without Upper Cover