



HW-14-08-G-S-300-100



DW-11-20-T-D-825



(2,54 mm) .100"

DW, EW, ZW, HW SERIES

FLEXIBLE .025" SQ BOARD STACKERS

Mates with:

SSW, SSQ, ESW, ESQ, CES, SLW, BSW, BCS, SSM, IDSS, IDSD, HLE, PHF, SMSD, SMSS

SPECIFICATIONS

For complete specifications see www.samtec.com?DW, www.samtec.com?EW, www.samtec.com?ZW or www.samtec.com?HW-TH

Insulator Material:
DW, EW, ZW: Black Glass Filled Polyester
HW: Natural Liquid Crystal Polymer
Terminal Material:
Phosphor Bronze
Plating:
Au or Sn over 50µ" (1,27 µm) Ni

Operating Temp Range:
-55°C to +125°C with Gold
-55°C to +105°C with Tin
RoHS Compliant:
Yes
Lead-Free Solderable:
DW, EW, ZW: Wave Only
HW: Yes

RECOGNITIONS

For complete scope of recognitions see www.samtec.com/quality



ALSO AVAILABLE (MOQ Required)

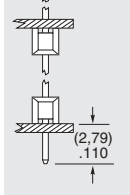
- Other platings
- Contact Samtec.

Note: For added mechanical stability, Samtec recommends mechanical board spacers be used in applications with gold or selective gold plated connectors. Contact ipg@samtec.com for more information.

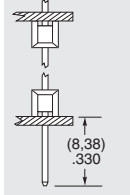
Note: This Series is non-standard, non-returnable.

TYPE STRIP	NO. PINS PER ROW	LEAD STYLE	PLATING OPTION	ROW OPTION	STACKER HEIGHT	OTHER OPTIONS
------------	------------------	------------	----------------	------------	----------------	---------------

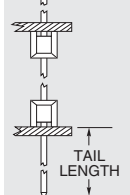
DW
= (2,79 mm) .110" Tail



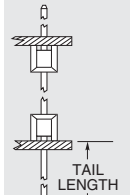
EW
= (8,38 mm) .330" Tail



ZW
= Custom Tail



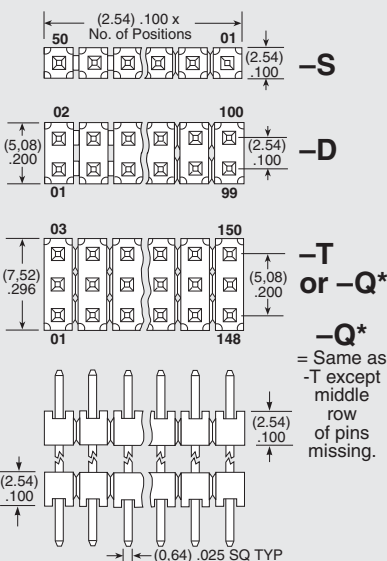
HW
= High Temp Custom Tail



Specify LEAD STYLE from chart

LEAD STYLE	OAL
-07	(10,92) .430
-08	(13,46) .530
-09	(18,54) .730
-10	(21,08) .830
-11	(23,62) .930
-12	(26,16) 1.030
-13	(31,24) 1.230
-14	(36,32) 1.430
-15	(16,00) .630
-16	(11,30) .445
-17	(12,19) .480
-19	(33,78) 1.330
-20	(28,70) 1.130

01 thru 50



-S
= Single Row

-D
= Double Row

-T
= Triple Row

-Q
= Double Row .200" (5,08 mm) row space

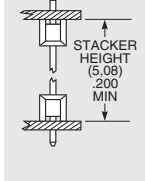
-F
= Gold flash on contact, Matte Tin on tail

-L
= 10µ" (0,25 µm) Gold on contact area of longer tail, Matte Tin on tail

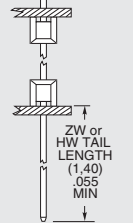
-G
= 10µ" (0,25 µm) Gold on contact area of longer tail, Gold flash on balance

-T
= Matte Tin

"XXX"
= Stacker Height



"XXX"
= ZW or HW Tail Length



-LL
= Locking Lead (Shortest dimension between the tail and the post is the end that will be crimped. Available on tails from (2,29 mm) .090" to (7,87 mm) .310" only.)
Single row, 01 & 02 positions & -Q row not available

"XXX"
= Polarized

Specify omitted pin position

