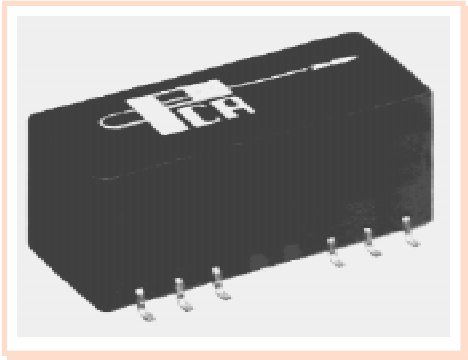


# Fiber to 10 Base-T Interface Module

## EPE6284G



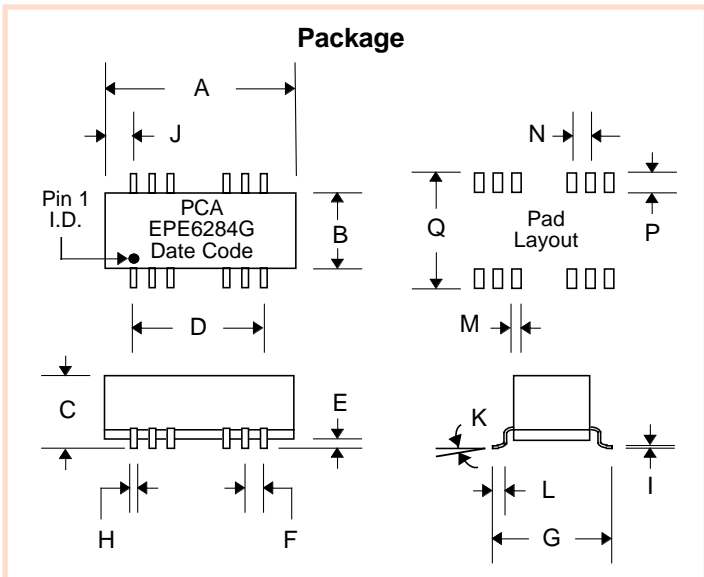
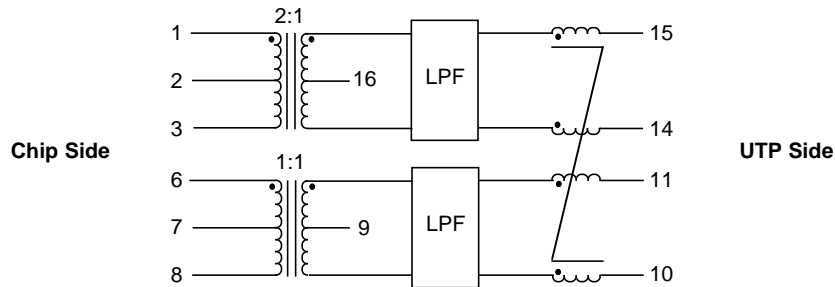
- Optimized for Micro Linear ML4664 •
- Robust construction allows for the toughest reflow processing •

### Electrical Parameters @ 25° C

Cut-off Frequency (MHz)		Insertion Loss (dB Max.)		Return Loss (dB Min.)		Attenuation (dB Min.)								Common Mode Rejection (dB Min.)				Crosstalk (dB Min.)			
± 1.0 MHz		1-10 MHz		5-10 MHz		@ 20 MHz		@ 25 MHz		@ 30 MHz		@ 40 MHz		@ 50 MHz		@ 100 MHz		@ 200 MHz		@ 1-10 MHz	
Xmit	Rcv	Xmit	Rcv	Xmit	Rcv	Xmit	Rcv	Xmit	Rcv	Xmit	Rcv	Xmit	Rcv	Xmit	Rcv	Xmit	Rcv	Xmit	Rcv	Xmit	Rcv
17	17	-1	-1	-15	-15	---	---	-5	-5	-10	-10	-16	-16	-40	-40	-30	-30	---	---	-30	-30

• **Isolation** : meets or exceeds 802.3 IEEE Requirements • **Characteristic Filter Impedance** : 100 Ω • Return Loss is specified over 98Ω •

### Schematic



### Dimensions

Dim.	(Inches)			(Millimeters)		
	Min.	Max.	Nom.	Min.	Max.	Nom.
A	.980	1.00		24.89	25.4	
B	.360	.380		9.14	9.65	
C	.355	.375		9.02	9.53	
D	.700	Typ.		17.78	Typ.	
E	.015	.025		.381	.635	
F	.100	Typ.		2.54	Typ.	
G	.490	.510		12.45	12.95	
H	.016	.020		.406	.508	
I	.008	.012		.203	.305	
J	.090	Typ.		2.29	Typ.	
K	0°	8°		0°	8°	
L	.030	.040		.762	1.02	
M			.040			1.02
N			.100			2.54
P			.100			2.54
Q			.540			13.72

\* Application note is available upon request.