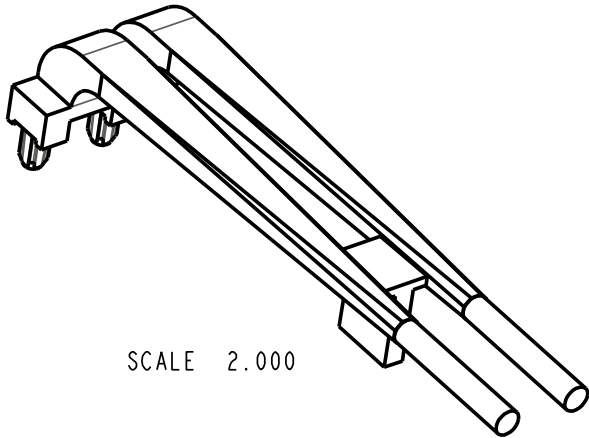
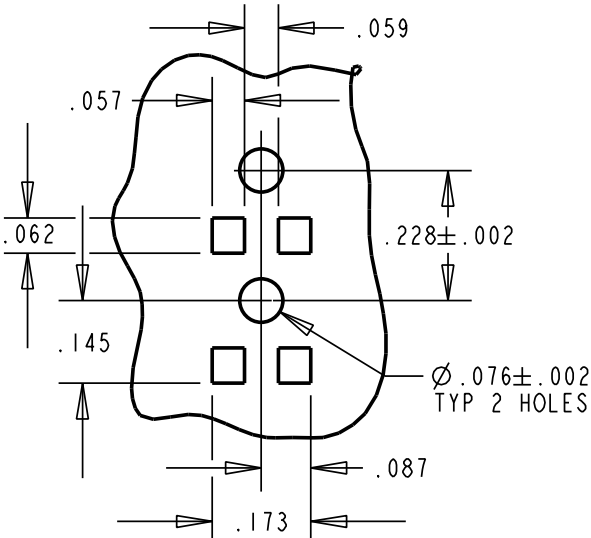
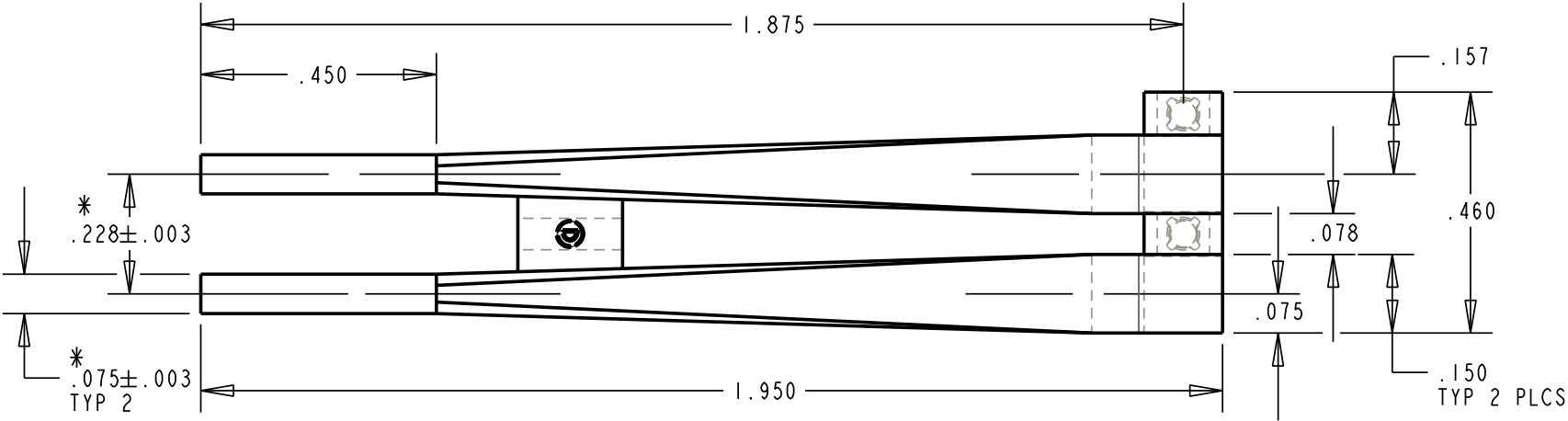


REV.	ECN NO.	REVISIONS	DRN.	CKD.	APP.	DATE
A		NEW RELEASE	ADM	YS	N.O.	10-19-01
B		ADDED: TOL. +.005/- .010 TO .110; ADDED: .015 DIM & DIALIGHT LOGO; REMOVED .125 (PIN) DIM.	ADM			

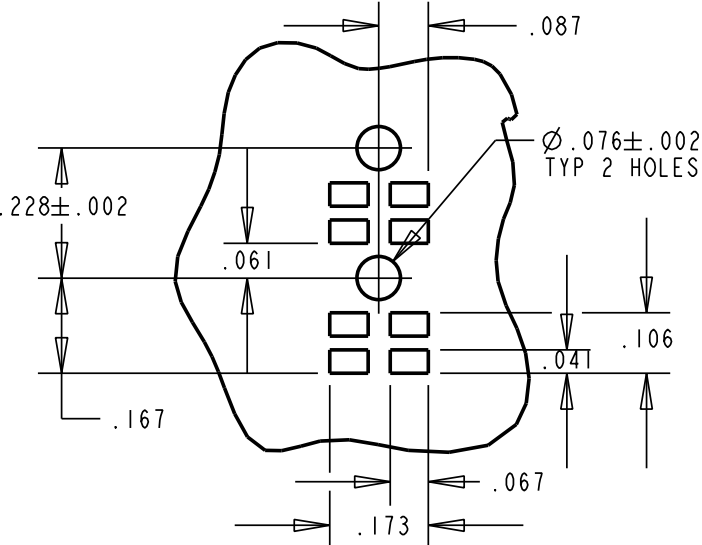
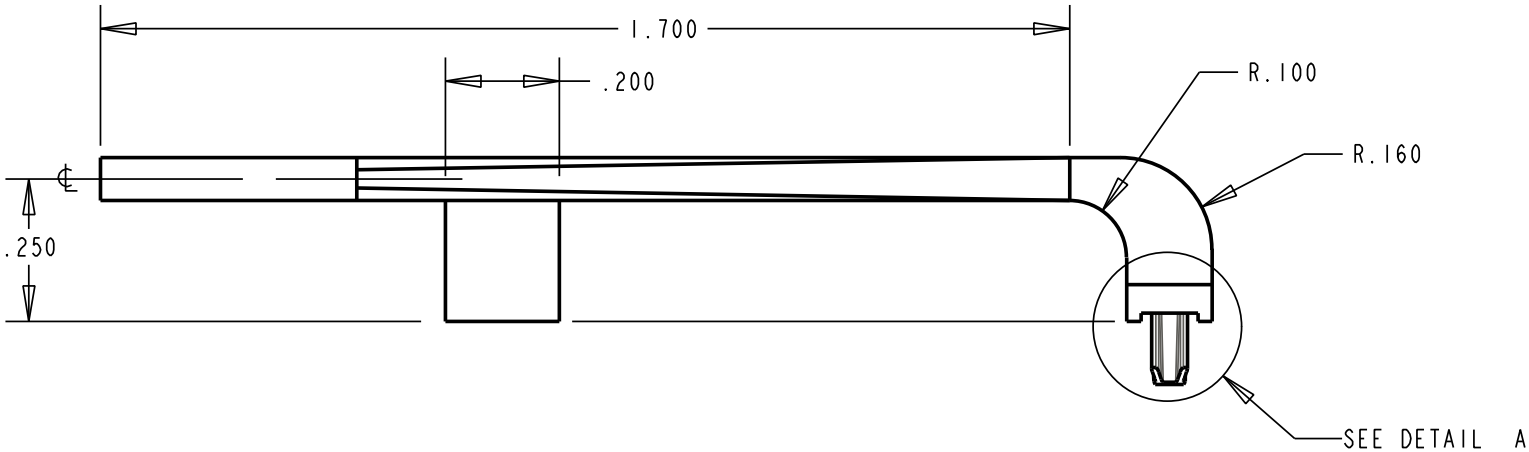
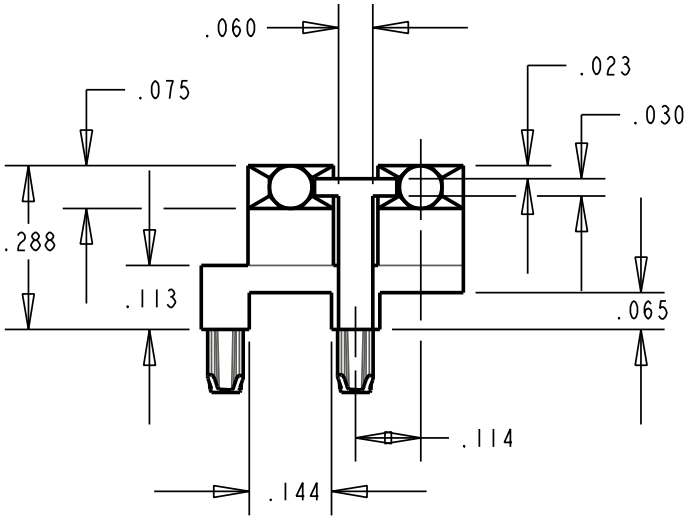
- NOTES:
1. MATERIAL: COMPONENT TO BE MOLDED IN A CLEAR TRANSMISSIVE POLYCARBONATE.
 2. COMPONENT DESIGNED TO BE PRESSED INTO A P.C. BOARD.
 3. LIGHTSOURCE: RED/GREEN SMT BI-COLOR LED; DIALIGHT P/N: 597-77XI-5XX AND YELLOW SMT SINGLE COLOR LED; DIALIGHT P/N 597-3XXI-5XX.
 4. LIGHTPIPE REFERENCE DIALIGHT P/N 515-1126.



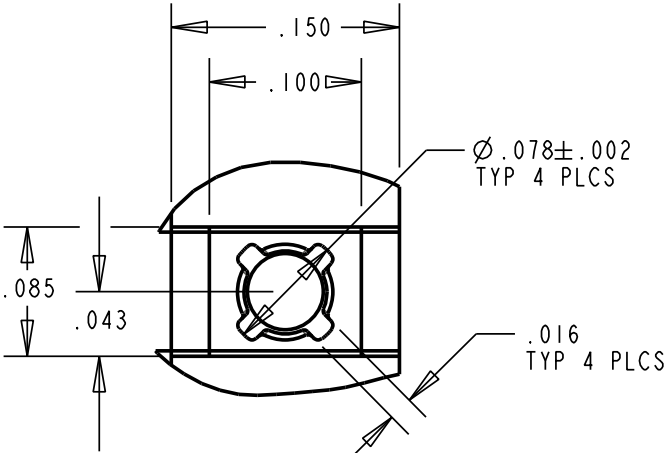
SCALE 2.000



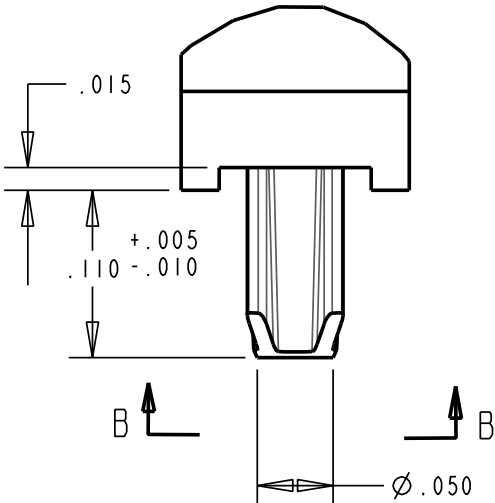
SOLDER PAD LAYOUT
SINGLE COLOR LED
SCALE 3:0




SOLDER PAD LAYOUT
BI-COLOR LED
SCALE 3:0



DETAIL B
SCALE 8.000
TYP (2) PINS



DETAIL A
SCALE 8.000

THIS DRAWING AND THE CONTENTS HEREIN ARE CONFIDENTIAL AND THE SOLE PROPERTY OF DIALIGHT. REPRODUCTION OF THIS DRAWING OR CONSTRUCTION OF ANY PARTS WITHIN THIS DRAWING ARE FORBIDDEN WITHOUT THE WRITTEN CONSENT OF DIALIGHT.		
SCALE: 3.000	DRAWING NUMBER C16870	REV B
ALL DIM'S IN: INCHES MM		
TOLERANCES: UNLESS OTHERWISE SPECIFIED FRACTIONS: ±1/64 DECIMALS (.XX): ±.01 DECIMALS (.XXX): ±.005 DECIMALS (.XXXX): ±.0005 ANGLES: ±1°	TITLE DIALIGHT LIGHT PIPE	
FINISH:	MATERIAL SEE NOTE 1	
FSCM 83330		1501 ROUTE 34 SOUTH FARMINGDALE, NJ 07727
SHEET 1 OF 1 FAMILY TABLE:		

Mouser Electronics

Authorized Distributor

Click to View Pricing, Inventory, Delivery & Lifecycle Information:

Dialight:

515-1126F