

AT89OCD-01

.....
User Guide





Section 1

Introduction

Congratulations on your purchase of the Atmel ATOCD51 emulator. The purpose is to provide designers with a reliable way to load and debug new Atmel AT8xC51 microcontrollers.

1.1 Overview

This document describes the ATOCD51 emulator system along with the associated Windows® software. This system is designed to allow an easy connection to Atmel AT8xC51 microcontrollers and uses the USB interface connection to PC platforms (standard USB B plug to A plug cable).

The software package is fully integrated into Keil® µvision IDE.

This user guide acts as a general getting started guide as well as a complete technical reference for advanced users.

Figure 1-1 . ATOCD51 emulator system



1.2 Glossary

System: The ATOCD51 emulator system.

OCD: On-chip debug, ability to access internal resources of microcontroller to help in firmware development.

Target: The Atmel AT8xC51 device to be debugged.

1.3 ATOCD51 emulator Features

The ATOCD51 emulator provides the following features:

- ATOCD51 emulator system:
 - USB B plug interface
 - 6-pin ribbon cable with OCD connector
 - System green LED
 - Target orange LED
 - Error red LED, indicating incorrect connection between the emulator and the target.
 - Hardware rescue jumper (inside the case)
 - Powered by the USB port
- Atmel ATOCD51 Plug-in for KEIL for µvision
 - Uses standalone installer
 - Allows code download to target
 - Visualizes memory areas and SFRs
 - Standard debug features: step by step, hardware breakpoints on all memory areas (SFR, internal RAM, XRAM, Code)
 - Unlimited number of software breakpoints
 - Freezes or not peripherals when breakpoint occurs
 - Wakes up from sleep modes
 - Trace buffer with record of last 8 non sequential executed addresses with high level source rebuild
 - Trace triggers and break on trace buffer full
 - Halt from user or internal reset sources

1.4 Supported targets

The current ATOCD51 emulator supports the following targets:

- AT85C51SND3x Multimedia products
- AT89C51RE2 products




Section 2

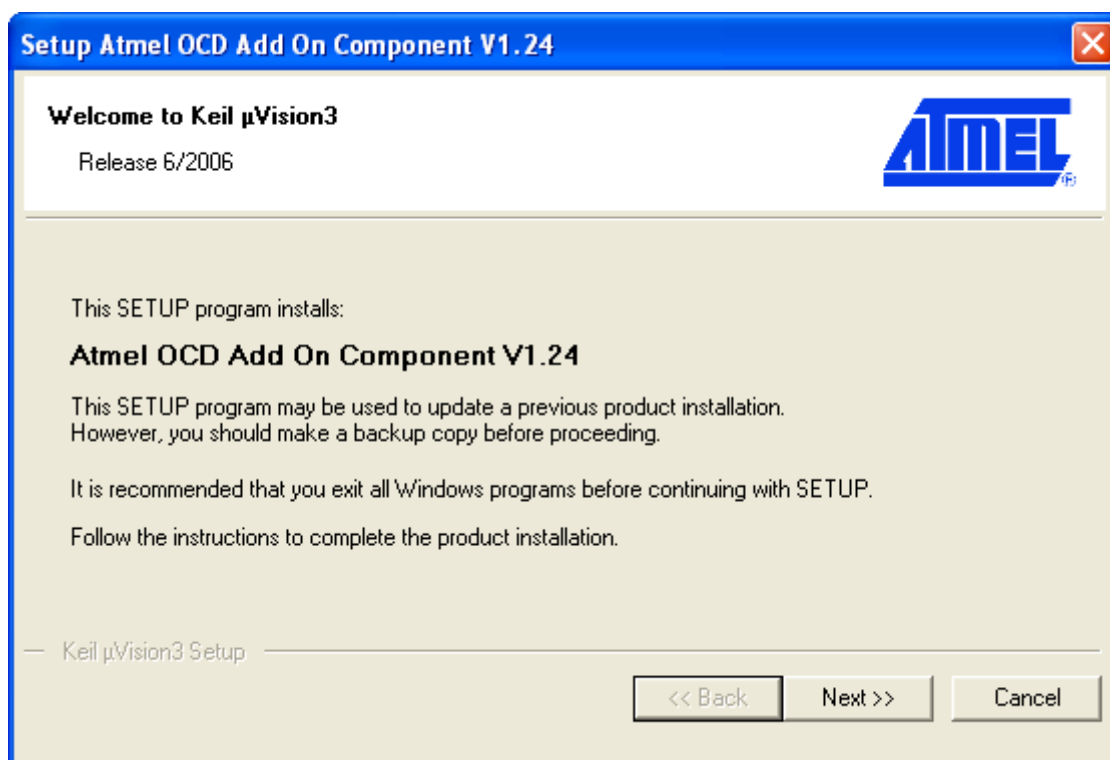
Installing the ATOCD51 emulator

2.1 Prerequisites

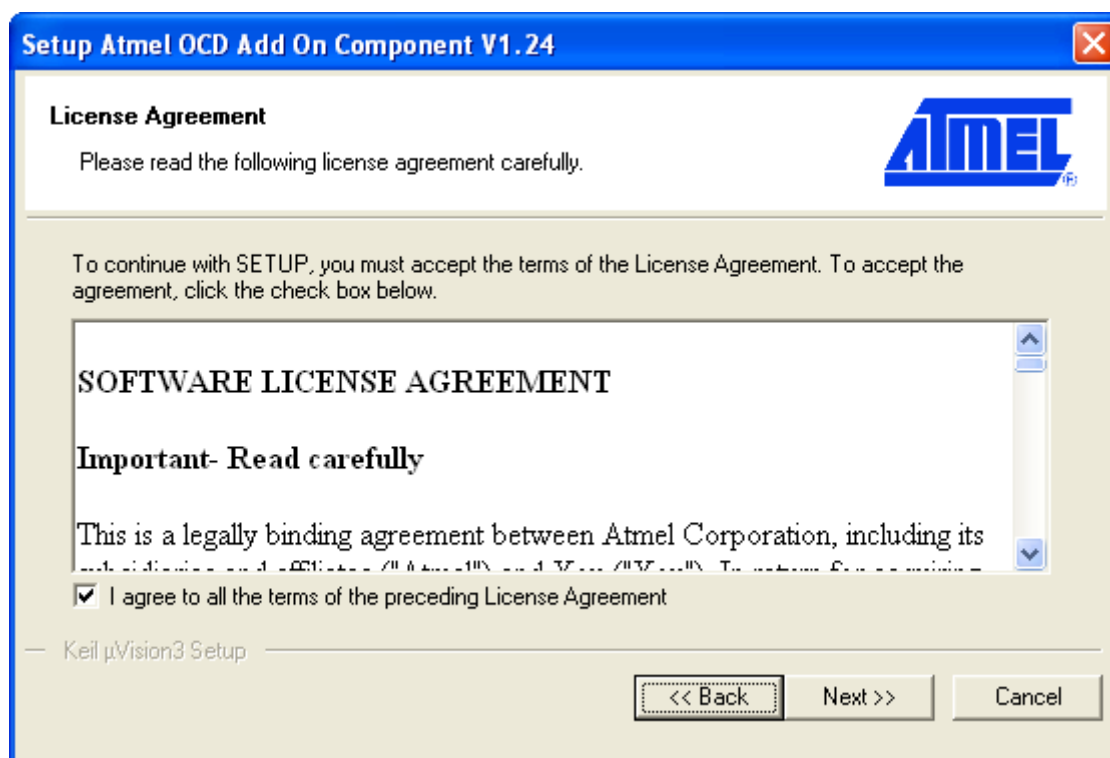
Before installing the ATOCD51 emulator software, make sure the following programs are installed:

- KEIL μ vision 2 or 3
- Java Run Time environment (1.5 or above)  (right-click logo)
- Atmel FLIP revision 3.0.5 or above: See Atmel web site for free download www.atmel.com . Check regularly for new updates as this can add new features or fix some issues.

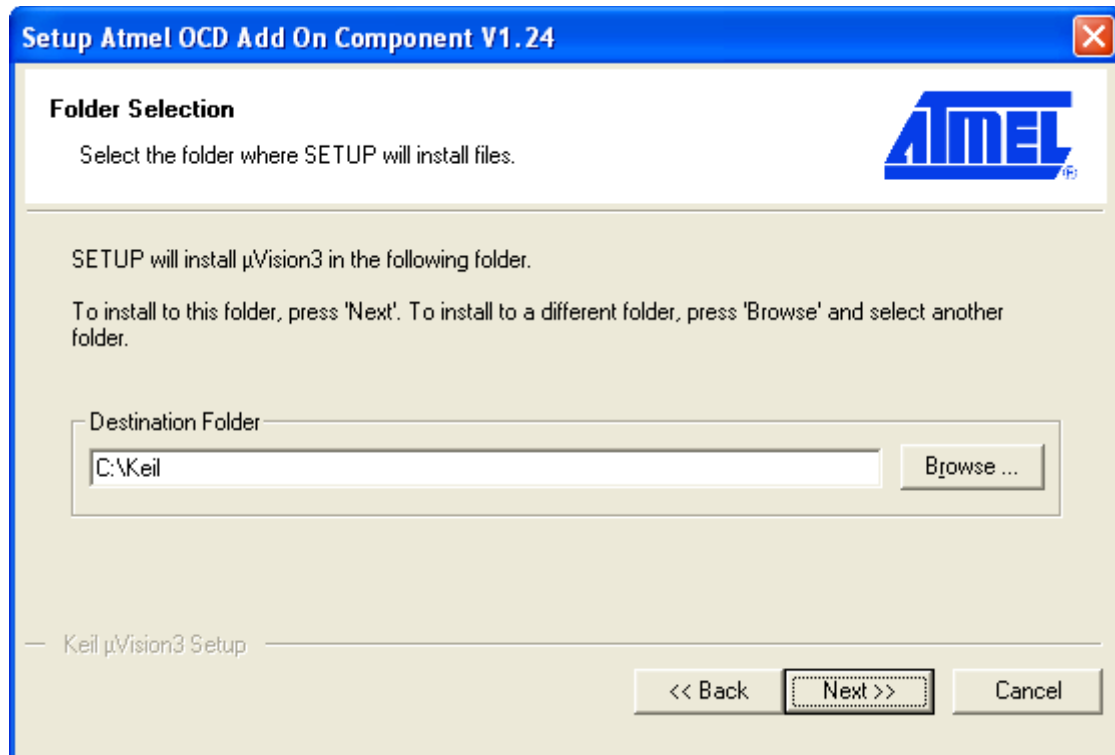
Then, run the AT89OCD-01 installation package for KEIL μ vision:
Atmel_Keil_OCD_Install.EXE and follow the installer:



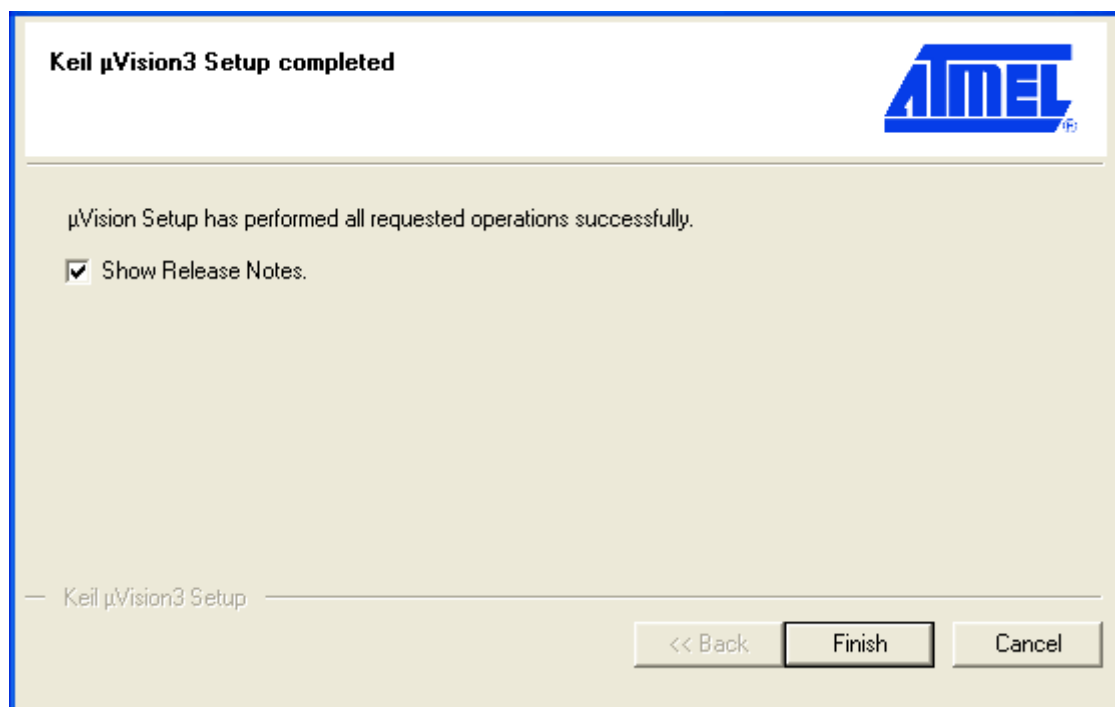
- Accept software license agreement



- Choose the KEIL installation directory



- Fill the customer information and perform the complete installation



- See troubleshooting section if some issues occur during this operation: Section 7



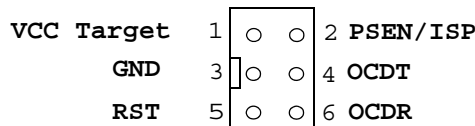
Section 3

Configuring the ATOCD51 emulator

This chapter describes how to configure the ATOCD51 emulator in the KEIL μ vision interface to download and debug application code. It also describes system connection with target.

3.1 Connector definition and target connection

Figure 3-1 . Recommended AtmelAT8xC51 target OCD connector



Note 1: OCDT and OCDR are the pin names for the serial debug interface on the target. These lines on the ATOCD51 emulator system have to be connected point to point to the lines on the target.

Note 2: For AT8xC51SND3x devices, the PSEN/ISP pin is not used and will be left non-connected. ISP entry is done using both OCDT & OCDR pins.

Note 3: If a wrong connection is made between VCC Target and GND lines, the error red LED turns On. Then, connection must be removed and ATOCD51 emulator system unplugged from PC.

3.2 LEDs definition

Green System LED : Always blinking when USB connection with PC is done. Can slow blink when programming the target. If stop blinking more than 2s, systems is hanged and must be unplugged and replugged.

Orange Target LED : On when target is connected and since there is target power supply, Off in other cases.

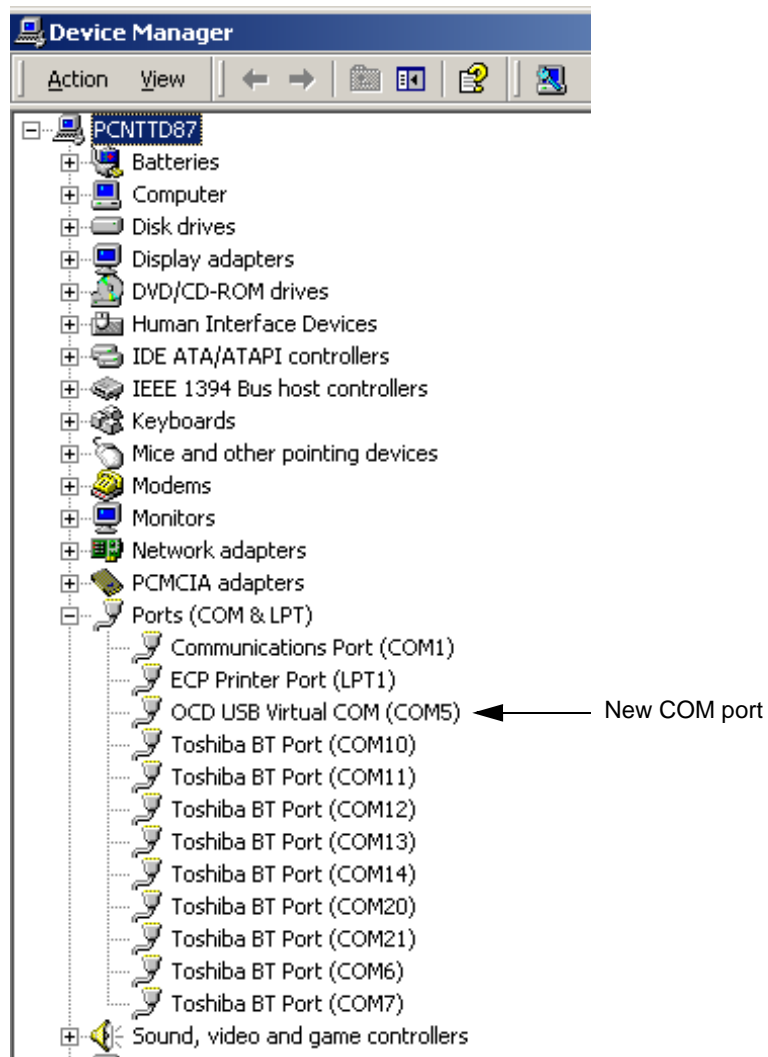
Red Error LED : Hardware power consumption detection : On when wrong connection (e.g ground to Vcc, etc...). Unplugged your OCD system from target connector and check the OCD connector pins definition.

3.3 Install ATOCD51 emulator USB Windows driver

- Plug the ATOCD51 emulator system on a Windows PC

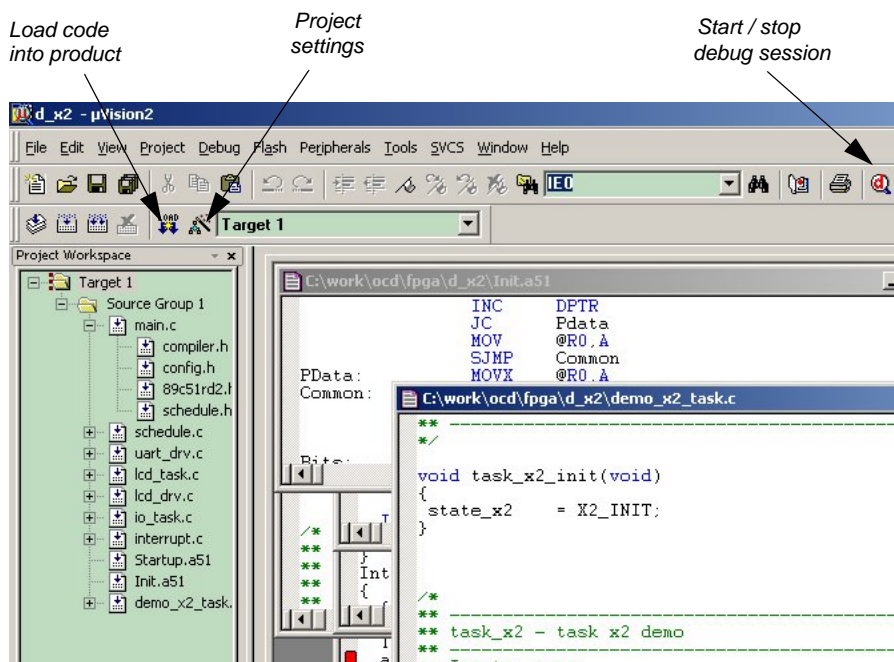
In the Driver Installation Wizard dialog, select the folder: KEIL\C51\AtmelUsbOcd where the atusbocd.inf file is located.

- A new serial COM port appears in the ports section of the Device Manager with the following name: OCD USB Virtual COM (COM<#>). This number is used in the Atmel ATOCD51 Plug-in for KEIL configuration.

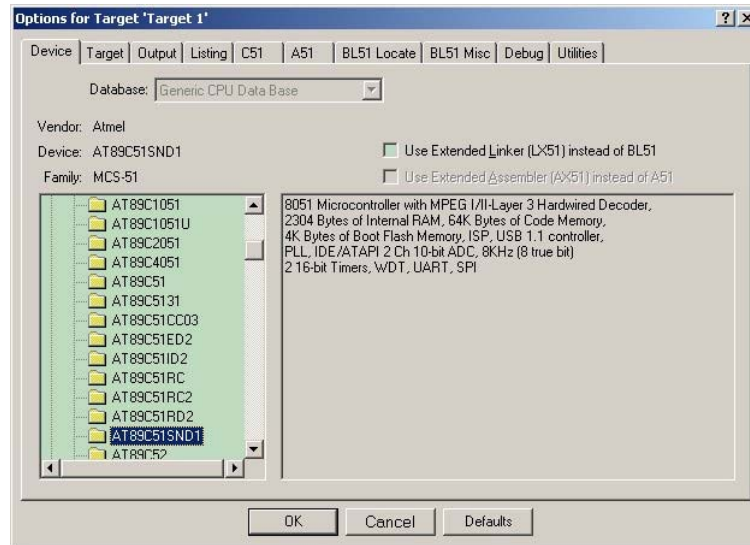


3.4 Configuring ATOCD51 emulator under KEIL μ vision

- When creating or launching a project on KEIL μ Vision, the project environment looks like the following:



- First select the project settings and choose the appropriate ATMEL MCU in the device list:



- If the device is not listed in your KEIL uvision release, select another Atmel MCU : AT89C51RD2/ED2 for AT89C51RE2 and AT89C51SND1 for AT89C51SND3x.

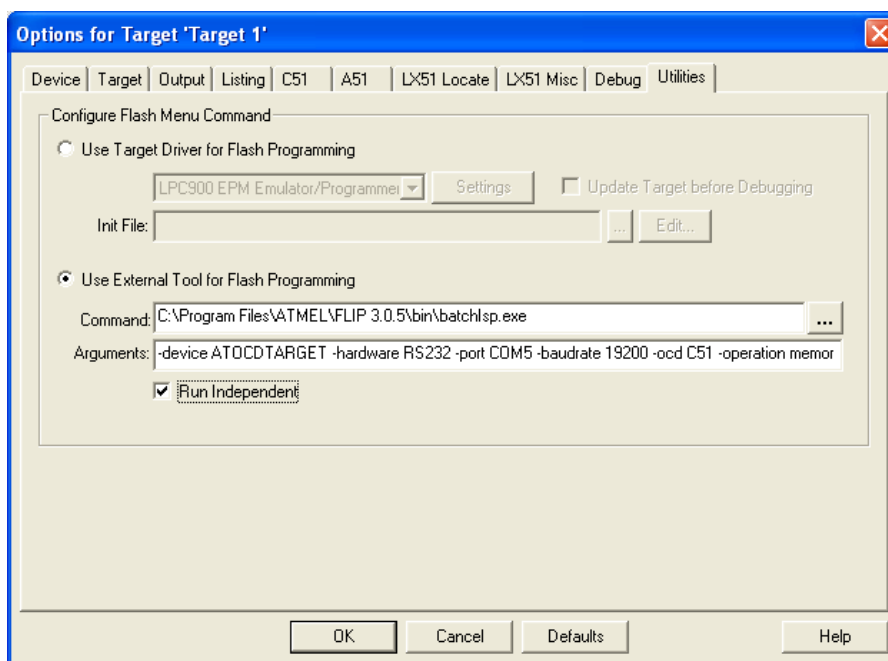
- To download the application code into the target, use the “Load button”:



This loader has to be configured in the KEIL µvision interface:

For AT89C51xE2 products the loader is based on “batchisp.exe”, the command line program delivered with Atmel FLIP software.

- First select the “options for target” in the KEIL µvision interface.
- On the Utilities tab, choose external tool for Flash programming and type “batchisp.exe”. Depending of FLIP/Batchisp release, you have either to browse the installation folder of the FLIP/Batchisp software, or only type “batchisp.exe” if the path is known.
- Add in the parameter field the following configuration:



-device ATOC51TARGET -hardware RS232 -port **COMx** -baudrate 19200 -ocd C51 -operation memory **memory#** loadbuffer %H PROGRAM

- **COMx** will be replaced with the **COM number given during OCD USB Virtual COM installation**, see section 3.3 Install ATOC51 emulator USB Windows driver.
- **memory#** will be replaced by **14** for AT89C51RE2 targets

example for OCD USB Virtual COM port 5 with a AT89C51RE2 target:

-device ATOC51TARGET -hardware RS232 -port **COM5** -baudrate 19200 -ocd **C51** -operation memory **14** loadbuffer %H PROGRAM

Note: Choosing to run the loader independently, will give you progressing information about the download. You should check this option.

Note: The Batchisp command line are not case sensitive

Note: If path for Batchisp is hard written in the Utilities tab of target settings, do not forget to update it when updating Flip/Batchisp software.



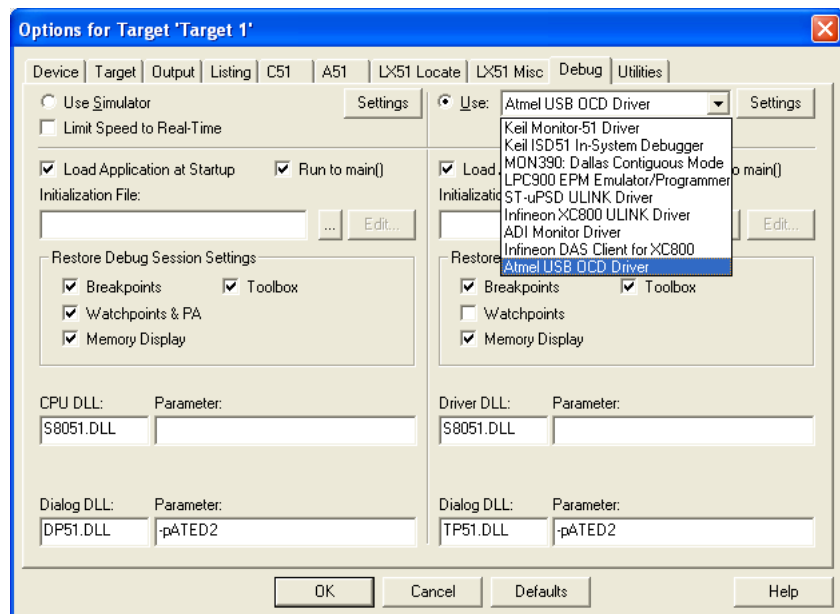
For AT89C51SND3x products, please refer to firmware packages and their OCD setup. These products use a specific loader.

- To start and stop a debug session, you have to use the “debug button”:



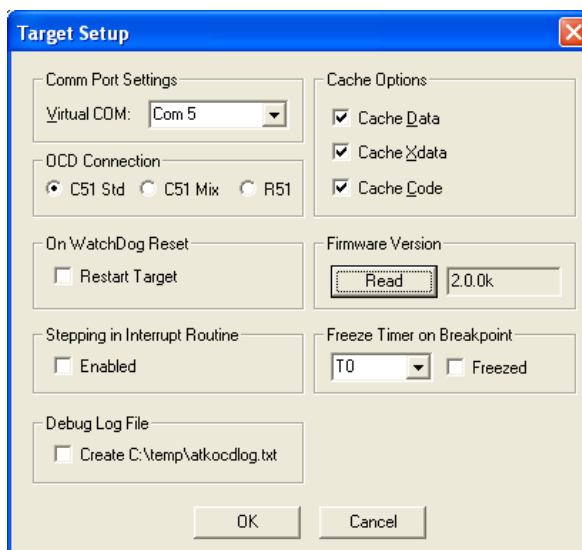
The debugger has to be configured in the KEIL µvision interface:

- First select the “options for target” in the KEIL µvision interface.
- On the Debug tab, choose “Atmel USB OCD Driver” as debugger for the current project.



- Check “Load application at start up” and “Go till main” options

- Then, select the “Settings” for the Atmel USB OCD Driver:




- Choose the appropriate Virtual COM port in regards of section 3.3 Install ATOCD51 emulator USB Windows driver.
- Choose the OCD Connection: C51 Std for AT89C51RE2 targets, C51 Mix for AT89C51SND3x targets.
- Check the Cache options for Data, Xdata and Code (to avoid KEIL interface to read code, xdata and data memory at each step, only when changes occur)
- When a Watchdog reset occurs, the debugger allows to restart or to halt the target, this can be chosen on the above check box.
- When the ATOCD51 emulator system is connected to the PC, you can read the actual firmware release.
- When doing step by step, stepping into interrupt routines can be enabled or disabled on the above check box
- Each timer & PCA can be either frozen or kept running when a the target is halted (user halt, watchdog, breakpoints ...). Select the appropriate timer which must be frozen when target is halted and check the box.
- A log file can be generated for support

3.5 Launching an AT89OCD-01 debug session under KEIL µvision

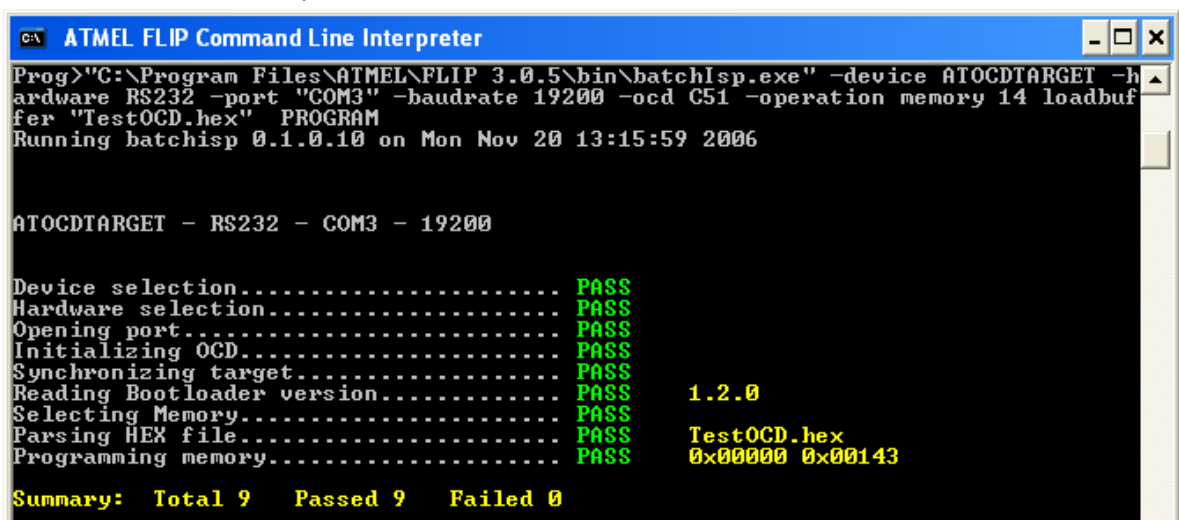
Once the set-up is completed, make sure to follow these steps before launching the first debug session:

- Power target (USB or power supply)
- Connect ATOCD51 emulator system to USB cable and to PC
- Green LED must toggle on the ATMEL OCD system
- Connect ATOCD51 emulator system to target on the 6-pin OCD header
- Orange LED must light ON on the ATMEL OCD system

- Launch µvision compile and link the project, make sure the previous configuration for OCD loader and debug session has been done properly
 - For AT89C51RE2 targets, see ATMEL application note Code banking with KEIL µvision, for specific banking configuration
 - For AT8xC51SND3x targets, special consideration have to be taken into account depending if code is with banking or not.
- Load application into target memory 

Note: If the target is AT8xC51SND3x with banking system, specific Nand Flash ISP is needed. See AT8xC51SND3x firmware packages and specific tools delivered with.

- if Batchisp loader is run independently within the KEIL Flash programmer interface, you will see the following Command window during the download operation:



```

C:\ ATMEFLIP Command Line Interpreter
Prog>"C:\Program Files\ATMEL\FLIP 3.0.5\bin\batchisp.exe" -device ATOCDTARGET -h
ardware RS232 -port "COM3" -baudrate 19200 -ocd C51 -operation memory 14 loadbuf
fer "TestOCD.hex" PROGRAM
Running batchisp 0.1.0.10 on Mon Nov 20 13:15:59 2006

ATOCDTARGET - RS232 - COM3 - 19200

Device selection..... PASS
Hardware selection..... PASS
Opening port..... PASS
Initializing OCD..... PASS
Synchronizing target..... PASS
Reading Bootloader version..... PASS      1.2.0
Selecting Memory..... PASS
Parsing HEX file..... PASS      TestOCD.hex
Programming memory..... PASS      0x000000 0x00143

Summary:  Total 9   Passed 9   Failed 0
  
```


- If the Batchisp loader is not run independently, the result of download will appear in the Build window of KEIL µvision interface.

```

x "C:\Program Files\Atmel\FLIP 3.0.5\bin\batchisp.exe" -device ATOCDTARGET -h
Running batchisp 0.1.0.10 on Fri Nov 17 17:10:30 2006
ATOCDTARGET - RS232 - COM5 - 19200
Device selection..... PASS
Hardware selection..... PASS
Opening port..... PASS
Initializing OCD..... PASS
Synchronizing target..... PASS
Reading Bootloader version..... PASS      1.2.0
Selecting Memory..... PASS
Parsing HEX file..... PASS      testRR2.HEX
Programming memory..... PASS      0x00000 0x0089D
Summary: Total 9   Passed 9   Failed 0

```

Note: Reading the Bootloader version is irrelevant for the Batchisp loader, a fail result of this operation is not critical for the other operations.

- If the “load operation” succeeds, then press  to start debug session:
 - PC Cursor comes on first instruction in main() function as shown below:

```

void main (void)
{
    // Set SFR page Clock
    Mcu_set_sfr_page_clock();

    // Set clock mode to X2 mode
    Clk_set_x2_mode();
}

```

- PC Cursor shows first instruction in assembly on Disassembly window:

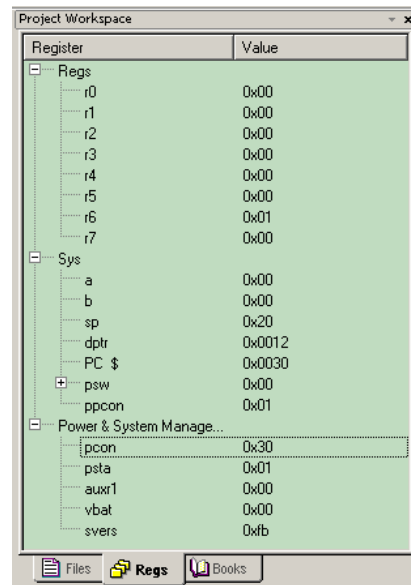
```

32: void main (void)
33: {
34:     // Set SFR page Clock
35:     Mcu_set_sfr_page_clock();
36:
37:     // Set clock mode to X2 mode
38:     D2C0     SETB     PPS0(0xC0.0)
39:     Clk_set_x2_mode();
40:
41:     // Set oscillator frequency to optimise power
42:     438F01    ORL     LCDSTA(0x8F),#0x01
43:     Clk_set_oscillator();
44:
45:     // Set interruptions mode
46:     438F18    ORL     LCDSTA(0x8F),#g_u8_addr_f
47:     Int_enable();
48:
49:     // Init our timers
50:     #warning NO TIMER IN THIS PROJECT
51:     timer_init_timer();
52:
53:     // Init our differents mailboxes : one for th
54:     D2AF     SETB     EA(0xA8.7)

```

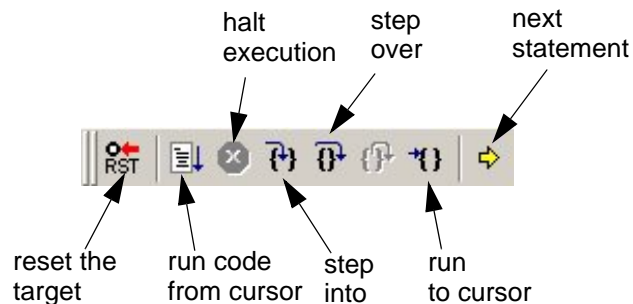
3.6 Working within an AT89OCD-01 debug session under KEIL pvision

- On left hand side: a register view give low level information about product state:




Register	Value
r0	0x00
r1	0x00
r2	0x00
r3	0x00
r4	0x00
r5	0x00
r6	0x01
r7	0x00
a	0x00
b	0x00
sp	0x20
dptr	0x0012
PC \$	0x0030
psw	0x00
ppcon	0x01
pcon	0x30
psta	0x01
auxr1	0x00
vbat	0x00
svers	0x1b

- Standard Debug actions can be performed using the following buttons:



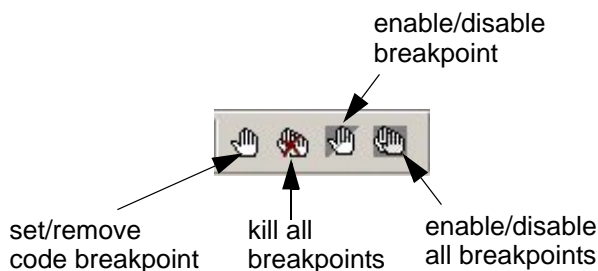
3.6.1 Breakpoint management

- Default breakpoints:
 - When you choose  button to halt execution
 - When stack overflows
 - When watchdog reset occurs
 - When target external reset button is pressed

Notes: 1. When watchdog breakpoint occurs, user must apply a reset to the target, by clicking on the reset button of the KEIL interface. If this is not done, Watchdog reset is still active and will occur again when running or doing step by step. User can also choose to reset automatically the target once watchdog reset occurs by selecting the check box “restart target” on Watchdog reset breakpoint in the OCD target settings.

■ Setting breakpoints:

- Code breakpoints are set/removed by double clicking on the code line or with the following buttons:



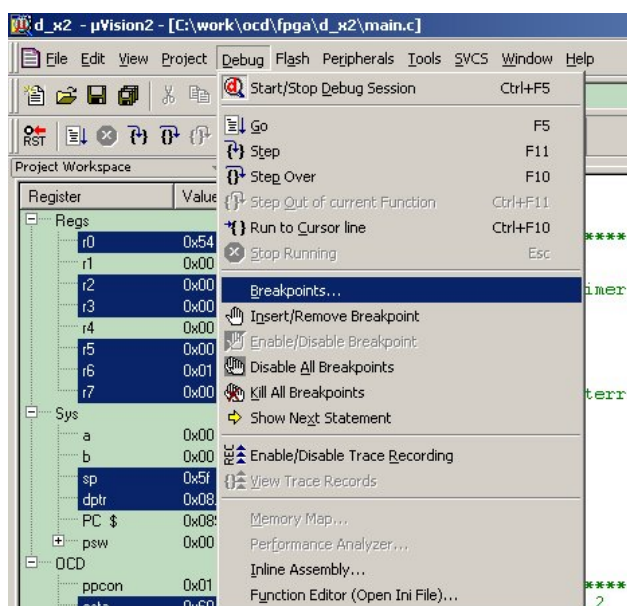
Code breakpoints can be either hardware breakpoints (addresses comparators) or software breakpoints (1-byte TRAP instruction executed in place of existing opcode).

2 hardware breakpoints are available while an infinity of software breakpoints can be set.

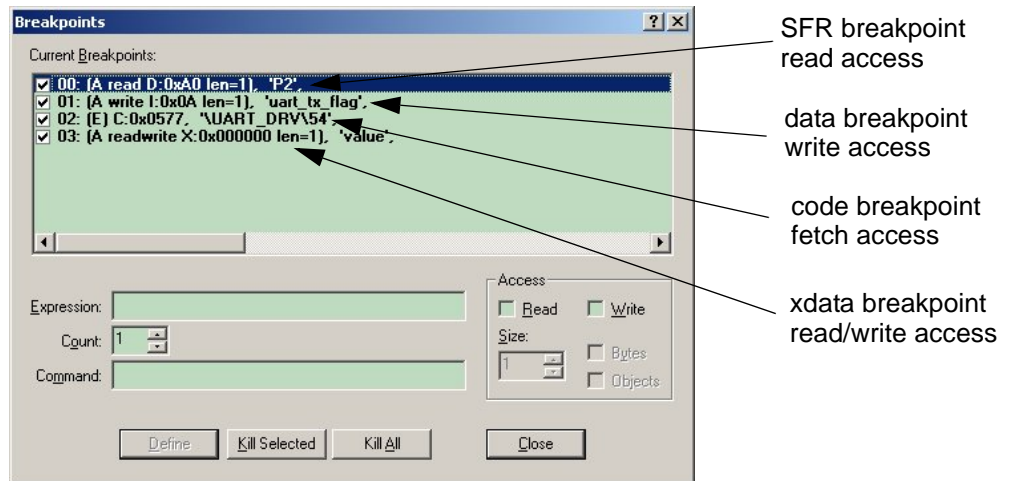
- Setting complex breakpoints on any target memory plans:

Based on the 2 hardware breakpoints available (addresses comparators), much more complex breakpoints can be set:

These breakpoints can be on data, xdata, sfr memory plans, on read or write access by choosing the “Breakpoints...” configuration window from the “Debug” menu:



The following window appears:



These complex breakpoints are set by writing under Expression field:

Syntax is the syntax used by KEIL:

Examples:

d:0x20 for data breakpoint

d:0xA0 for SFR breakpoint (P2)

i:0xA0 for idata breakpoint

x:0x100 for xdata breakpoint

c:0x1000 for code breakpoint

b02:0x8500 for code breakpoint in bank memory 2

Read or Write access or both can be chosen in the check boxes on the right hand side.

Notes: 1. The above window only shows type of possible complex breakpoints. Only 2 hardware breakpoints are available at the same time. If no complex breakpoints are defined, first two code breakpoints will be hardware, all other code breakpoints will be automatically set as software breakpoints. To set complex breakpoints, it is then recommended to remove all set breakpoints first, place the complex breakpoints and then place the code breakpoints.

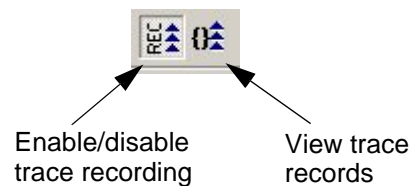
3.6.2 Trace management

Trace is made of 2 types: "Build-in Trace", non intrusive and powerfull but limited in size and "Intrusive Trace", which needs to be added in the application code as "printf" equivalent.

Build-In Trace

Build-In Trace is based on the record of the last 8 branches which have occurred during code execution. When execution is halted, trace is reconstructed based on these last 8 branches.

- Trace buttons:



- Trace view is done on the Disassembly view in gray color:

```

32: void main (void)
-7 C:0x431E D2C0 SETB PPS0(0xC0.0)
38: Clk_set_x2_mode();
-6 C:0x4320 438F01 ORL LCDSTA(0x8F),#0x01
41: Clk_set_oscillator();
-5 C:0x4323 438F18 ORL LCDSTA(0x8F),#u8_addr_first_block_font(0x18)
44: Int_enable();
-4 C:0x4326 D2AF SETB EA(0xA8.7)
51: mail_init_mailbox();
-3 C:0x4328 124413 LCALL mail_init_mailbox(C:4413)
48: void mail_init_mailbox(void)
-2 C:0x4413 22 RET
54: Mcu_set_sfr_page_default();
-1 C:0x432B D2C1 SETB PPS1(0xC0.1)
57: scheduler();
C:0x432D 0243E8 LJMP scheduler(C:43E8)
177: U8 mail_send_event(U16 evt_id, U16 param)
C:0x4330 AB05 MOV R3,0x05
C:0x4332 AA04 MOV R2,0x04
178: {
179: // Push an event towards the MMI
180: // For that case, we need to integrate inside the eventId, the
181: // id of the MMI task because that our politic to send only
182: // ...

```

You will then see on this window the history code executed since the last 8 branches.

Intrusive Trace

Intrusive trace is based on specific routines in the user code which output strings or data through the debug interface. These messages are visualized in the KEIL “command window”. The routines behaves from a user point of view as simple “printf” routines.

- You must first add in his KEIL project the “debug.h”, “debug.c” and “trace.c” files
- Then, C modules where intrusive traces will be done need to include “debug.h” file and add the following define with *ENABLE* or *DISABLE* to activate or not intrusive trace:

```
#define _TRACE_ (ENABLE)
```

- You must then use the following functions:

```
void trace( const U8* str );
void trace_hex( U8 val );
void trace_u8( U16 val );
void trace_u16( U16 val );...
```

Examples in user code:

```
trace("value in hex of variable: temp\r\n");
trace_hex(temp);
```

- Assert routine:

Between all available routines in debug.h/debug.c files, the assert routine enables to hang the execution code when accessing to a non expected code area. This uses the TRAP instruction to halt the target.

Then, C modules where assert feature will be done need to include “debug.h” file and add the following define with *ENABLE* or *DISABLE* to activate or not assert:

```
#define _ASSERT_ (ENABLE)
```

Example in user code:

```
assert(Expression);
```

will lead to the following execution if “*Expression*” is false:

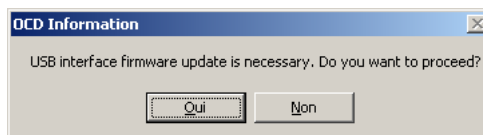
- hangs the code execution (while(1))
- outputs in the KEIL “command window” the source file as well as source line where assert occurs.

Notes: 1. When code is executed without OCD active, all assert will behave as a NOP instruction.



3.7 Updating ATOCD51 emulator firmware

- A new AT89OCD-01 plug-in may contain an updated version of the USB dongle firmware. Once a debug session is initiated, the plug-in reads the ATOCD51 emulator system firmware version and prompts you with an update dialog..



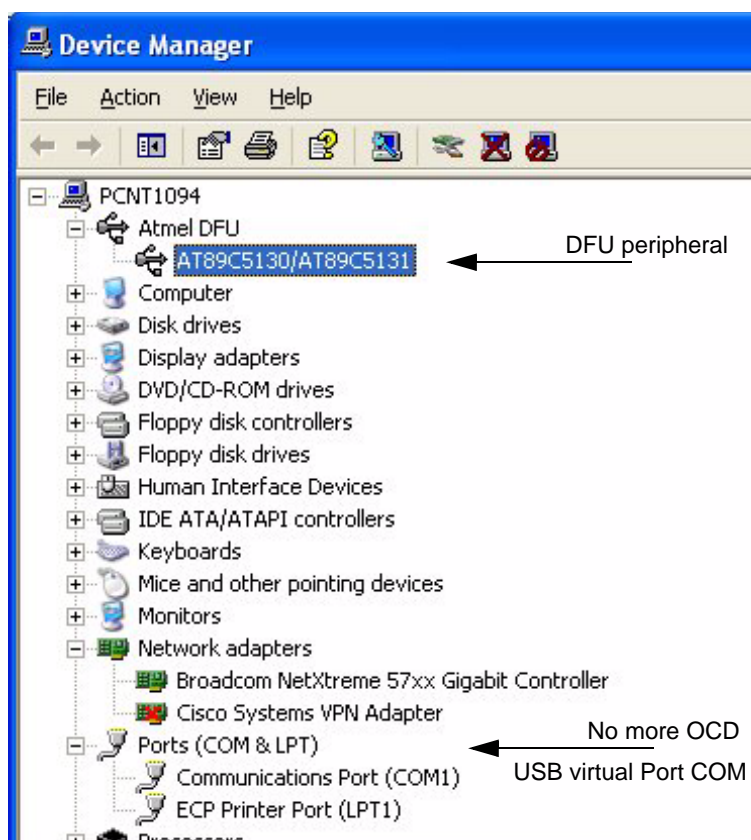
If this is the first ATOCD51 emulator system firmware update, Windows will detect a new USB peripheral.

The ATOCD51 emulator system enumerates in DFU class (Device Firmware Upgrade).

You must then choose the FLIP software installation folder (e.g: most of the time C:\Program Files\Atmel\FLIP x.y.z) and select in \usb directory the specific driver: usb_dfu.inf

See Batchisp user's manual in the Help menu of FLIP Software for more details on the Batchisp usage.

Once this driver is selected, the DFU class appears under AtmelDFU/AT89C5130/AT89C5131



In case of the update firmware has failed, please check the following :

Is the system green led still blinking or not ?

- if blinking the above updating firmware procedure must be performed again. System must be first unplugged then plugged again to the PC.
- if led is off, this means the OCD system still under "update mode". In this case, run then the **Update_Firmware.bat** file located in the KEIL installation folder: KEIL\C51\AtmelUsbOcd.
Once the operation is completed, the green LED must blink again. The system has been updated and ready to use.

- In case of the Update_Firmware.bat file leads to an error & the green system LED is still off, this issue could be due to former installations of FLIP software with different USB driver for Firmware Update. See **Appendix A** for details & procedure.

■ Manual update for ATOCD51 emulator system firmware:

This must be done only **if a new firmware release has been delivered separately** from an Atmel ATOCD51 Plug-in for KEIL or if the ATOCD51 emulator system does not function. (unable to connect to the target and the system green led does not blink).

See troubleshooting section if some issues occur during this operation: Section 7

- Unplug the ATOCD51 emulator system from the target & the PC.
- Open the ATOCD51 emulator system box and close the rescue jumper SP1
- Plug the ATOCD51 emulator system to the PC, the system green led must be off.
- If first time firmware update, see above for finding the proper USB driver
- Run then the **Update_Firmware.bat** file located in the KEIL installation folder: KEIL\C51\AtmelUSBOCD
- Once the operation is completed, open the rescue jumper, close the box, unplug and plug again the ATOCD51 emulator system to the PC



Section 4

Limitations

- Need to load first the application code before starting a debug session, this is not yet done automatically.
- When debugging a AT85C51SND3x product in banking mode, the number of software breakpoints is limited to 16. No limitation on software breakpoints when non banking mode for AT85C51SND3x products or on AT89C51xE2 products
- Usage of TWI peripheral is incompatible with usage of OCD51 system :
When accessing SCON SFR register (93H) for TWI configuration, OCD51 system halts and can not be reset. A popup window may occur with HBSTA register with unknown value. Simple initialization instruction SCON|=0x40 generates this issue in OCD mode.
However, the usage of TWI is still possible and it runs properly once in standard running mode, e.g not using the OCD system.



Section 5

New features

The following features are added since the 1.30 revision of the Atmel ATOCD51 Plug-in for KEIL linked to the 2.0.6 revision of OCD dongle firmware

- Full chip erase of AT89C51RE2 target when target is locked. When accessing to a target which is secured, the OCD dongle will perform a full chip erase operation prior to connection.



Section 6

Features Not Yet Implemented

The following features already supported by ATOCD51 emulator firmware, still need to be added in the Atmel ATOCD51 Plug-in for KEIL:

- Trace triggers and break on trace buffer full

The following features are neither supported by ATOCD51 emulator firmware nor by the Atmel ATOCD51 Plug-in for KEIL:

- Warning information about crypted code on AT8xC51SND3x target. Debug session on crypted code can not be possible and will not.




Section 7

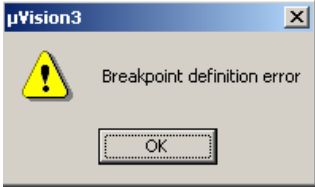
Troubleshooting Guide

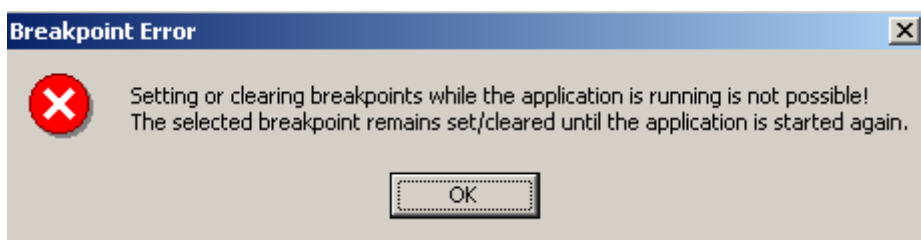
Figure 7-1 . Troubleshooting Guide

Problem	Reason	Solution
The system green LED is not blinking	ATOCD51 emulator system is not conneted to PC	Verify connection to PC
	Debug session has not been terminated properly or target connection has been removed during debug session	- close KEIL debug session, unplug and plug again the system and see if system green LED is blinking again.
	No crystal on the target board	Add crystal on target board
	ATOCD51 emulator system could be in update firmware mode	- the update firmware operation is on going, then wait system green led for blinking again - unplug and plug again the system and see if system LED is blinking again. - a manual firmware update has been done and rescue jumper must be removed on the emulator board, system must be unplugged and plugged again. - system has gone into update mode but firmware update fails, see in this troubleshooting section : "Batchisp command has failed when upgrading the OCD firmware"
The target orange LED does not light when connecting to a target	Target is not or incorrectly connected to the ATOCD51 emulator system	Check target connections. See section 3.1 Connector definition and target connection
	Target is not powered on	Power the target and check again that green LED is blinking and orange LED is ON

Problem	Reason	Solution
Target is not answering when starting a debug session	Target is not or incorrectly connected to the ATOCD51 emulator system	Check target connections. See section 3.1 Connector definition and target connection
	Target is connected but hot unplugged has been done	Close μ vision session, unplug and plug again the ATOCD51 emulator system, cycle power on target
	No crystal on the target board	Add crystal on target board
	No power on the target board	Power on the target board
	OCD system drives the reset pin of the target to enter into OCD mode	Make sure the reset circuitry will not disturb the control of target's reset pin
	In case of secured target (locked bit set), the OCD system can not connected to the target. A full chip erase must be performed to enable any debug session. OCD systems then drives PSEN pin to enter into product bootloader (AT89C51RE2) to make this full chip erase.	Make sure no specific circuitry on PSEN can disturb the control of target's PSEN pin
Cannot connect to OCD target:	Target is connected but hot unplugged has been done	Close μ vision session, unplug and plug again the ATOCD51 emulator system, cycle power on target
	ATOCD51 emulator system is not connected to the PC	Connect the ATOCD51 emulator system to the PC
	On some laptops, due to the USB OCD driver, same COMx could be present twice: 2 COM5 for example could be listed in the Device manager; Port COM & LPT section	Connect the ATOCD51 emulator system to the PC on another USB port.
	Moving from 1 USB slot on a PC to another leads to opening a new OCD virtual port COM	Open the Device manager on the control panel to see the new COM port assign to the Atmel OCD system. Then, make sure that KEIL OCD settings take into account this new COM port : Target settings/Debug & Utilities for loading target from OCD system.
Batchisp command has failed when upgrading the OCD firmware	The USB DFU driver for OCD dongle has not been installed properly	See FLIP Software installation and user's manual See Section "Updating ATOCD51 emulator firmware", page 22
	The USB DFU driver for OCD is still the former used by Atmel, under Jungo	See Appendix A in Section 9 for special move from USB DFU Jungo to Atmel

Problem	Reason	Solution
Batchisp command has failed when downloading code application into target	The USB OCD Virtual COM port driver for OCD dongle has not been installed properly	See Section “Install ATOCD51 emulator USB Windows driver”, page 9
	The path for Batchisp program is not know in the environment variables	Check path content in the Control Panel, System folder, Environment, Advanced tab, then Environment variables. In the User variables, check the path variable. This must have the FLIP software path included.
	The command line for Batchisp in the “Utilities” tab of the KEIL target settings, has been reset to the default KEIL command line. This default command line is usually used for using Batchisp program thru bootloader and not thru OCD dongle	See Section “Configuring ATOCD51 emulator under KEIL µvision”, page 10, to write the proper arguments in the Batchisp argument’s line to work with OCD dongle
Read bootloader version failed when using command line Batchisp for code download into AT89C51xE2 target	Bootloader version information is irrelevant when using the OCD dongle	Do not take care about this reading error.
Cannot debug invalid code or secured code on AT85C51SND3x product	Code inside the product is secured or incorrect	<ul style="list-style-type: none"> - check in option.h file if the define <i>BANK_DECIPHER</i> is set to <i>ENABLE</i> - check if code has been properly loaded
Software breakpoint occurs at 0x100 code address on AT8xC51SND3x target	Specific breakpoint management only for banking mode with AT8xC51SND3x targets	<p>Check if the project uses code banking.</p> <p>If yes:</p> <ul style="list-style-type: none"> - check that “Code banking” check box is selected on the “Target” tab of target settings - check in option.h file if the define <i>CODE_BANKING</i> is set to <i>ENABLE</i> <p>If no:</p> <ul style="list-style-type: none"> - check that “Code banking” check box is not selected on the “Target” tab of target settings - check in option.h file if the define <i>CODE_BANKING</i> is set to <i>DISABLE</i>
Code breakpoints do not work properly in banks on AT8xC51SND3x target	Specific breakpoint management only for banking mode with AT8xC51SND3x targets	As these breakpoints are managed internally by the ATOCD51 emulator firmware, number of code breakpoints in all banks are limited to 16
	Whole project has not been reloaded into Nand Flash and µvision code differs from code in the target	Reload the code in Nand Flash using the Music_player_ISP PC software.

Problem	Reason	Solution
Code breakpoints do not work properly in banks on AT89C51RE2 targets	Banking method does not followed Atmel banking application note for AT89C51RE2 targets	Change banking method according to the Atmel application note
Error when setting breakpoint on static variable: 	KEIL interface issue	Can be work around by setting the breakpoint using the “breakpoint” configuration in the “debug” menu and enter the address of the static variable. See Section “Breakpoint management”, page 17
Can set or remove code breakpoints while target is running, but not taken into account. See msg below	Breakpoints set or remove operation is only taken into account when target is halted.	KEIL allowed to fix this but this can be used with the ATOCD51 emulator. Do not set or removed breakpoints when target is running, this could lead to inconsistent behavior. When this occurs, exit debug session and restart the session



OCD system hungs when using TWI peripheral	When accessing to the SSSCON(93h) register for TWI initialization through a debug session, OCD system hangs and can not be stopped or reset.	Silicon limitation when using OCD system. TWI works fine without OCD enabled. See Section 4 of this document : Limitations
--	--	--



Section 8

Technical Specifications

■ System Unit

- Physical Dimensions L=110 x W=55 x H=22 mm
- Weight80 g

■ Operating Conditions

- Voltage Supply3.3V from USB bus

■ Connections

- USB Connector B receptacle
- USB Communications Full speed speed
- Target connectionRibbon cable with HE10 6-pin header
- Inside Box JumperRescue jumper for system firmware upgrade

■ LEDs

- Red LEDError LED when wrong target connections
- Green LEDSystem LED blinking when system is running
- Orange LED..Target LED lighting ON when target is connecting to OCD system

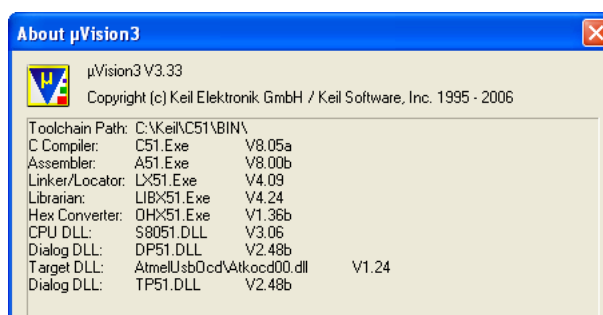


Section 9

Technical Support

For Technical support, please contact 8051@atmel.com. When requesting technical support, please include the following information:

- Which target 8051 device is used (complete part number, device marking : date code and lot number)
- The target voltage and the clock frequency
- The clock source and the target fuse setting when FLASH device
- The banking mode: the code is with or without banking
- The hardware revision of the ATOCD51 emulator system, see sticker on the bottom side of PCB
- The ATOCD51 emulator system firmware revision, accessible from the “Target setup” window: See section 3.4 Configuring ATOCD51 emulator under KEIL µvision
- The KEIL suite version numbers as well as Atmel ATOCD51 Plug-in for KEIL: In the Help menu, choose About µvision:



- The PC operating system and the version/build
- The PC processor type and its speed
- A detailed description of the problem



Section 10

Appendix A

Upgrading the Atmel AT89OCD-01 firmware when some FLIP software versions below 3.0.0 have been installed.

When starting a debug session using Atmel AT89OCD-01 under KEIL μ Vision, a pop-up window appears if firmware upgrade is necessary on the OCD system.

This firmware upgrade is based on **batchisp.exe** program, - the command line executable file of Atmel FLIP software -. It uses the Device Firmware Upgrade USB class.

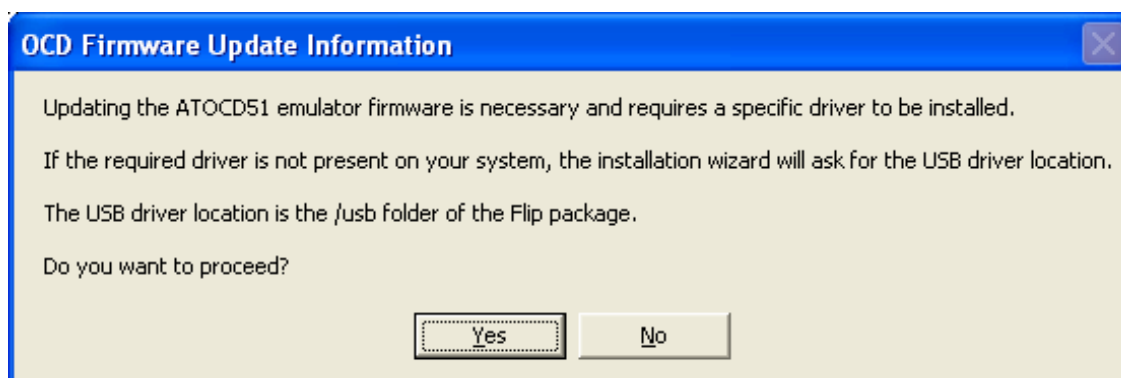
For customers who have previously used versions of Atmel FLIP software below 3.0.0, USB DFU class was supported by 3rd party vendor called Jungo.

Since Flip 3.0.0, DFU class is now supported by Atmel and named ATMEL DFU

Proceeding to a firmware upgrade of the Atmel OCD system with a FLIP version above 3.0.0, when customers have used former version of FLIP, will fail.

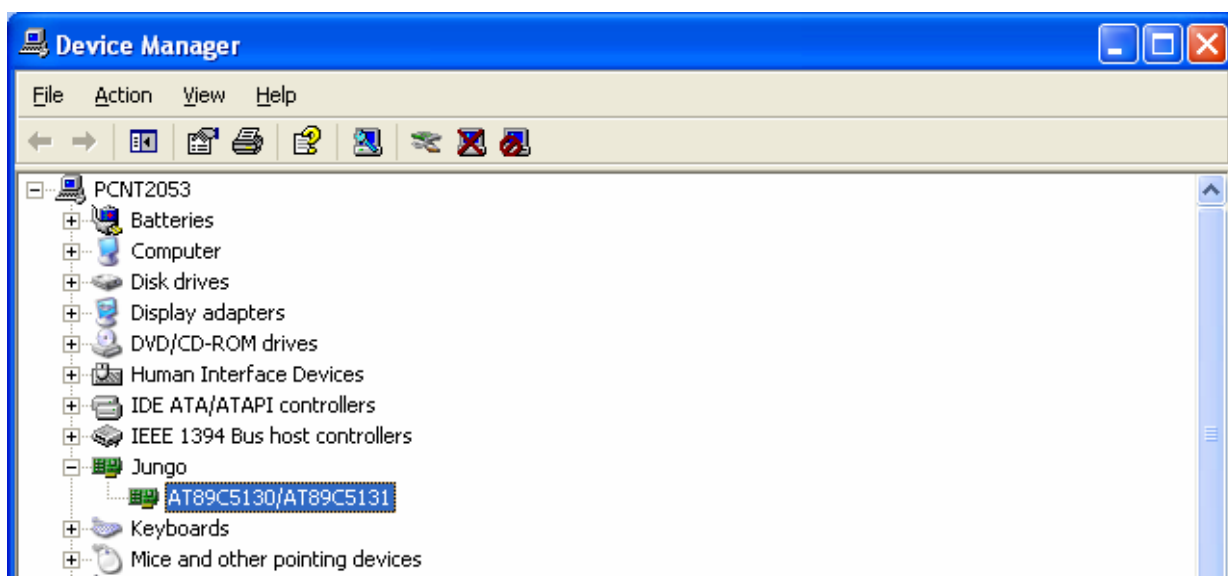
Please follow the procedure to make sure that the upgrade will be done properly :

1. Launch the debug session to start the upgrade firmware

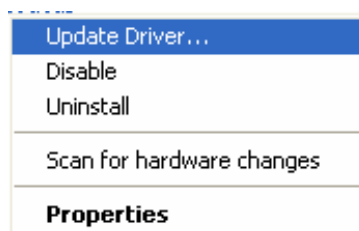


2. Then Select "Yes", the "batchisp" program is launched in a command window and fails : the command window exits and the green system LED of OCD system stops blinking.

3. The USB DFU driver must be changed from Jungo to the new Atmel one : Open the Device Manger in the Windows Control Panel and check that Jungo is listed with ATMEL AT89C5131/30 device.



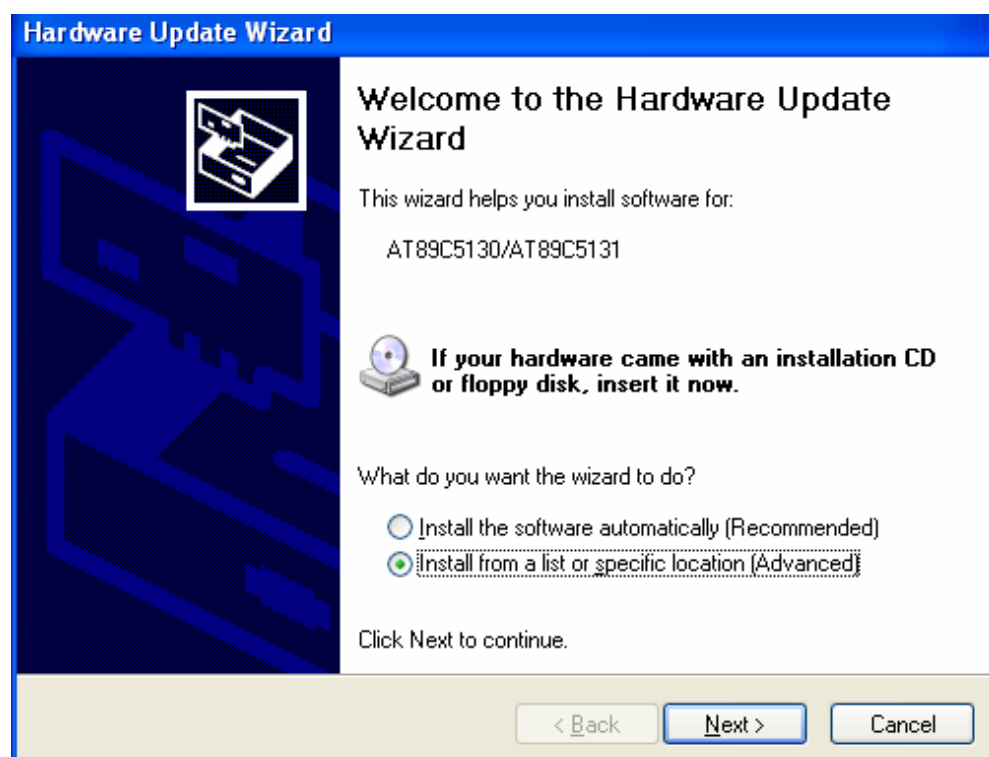
4. Right click on the AT89C5131/30 device and select “Update driver” :



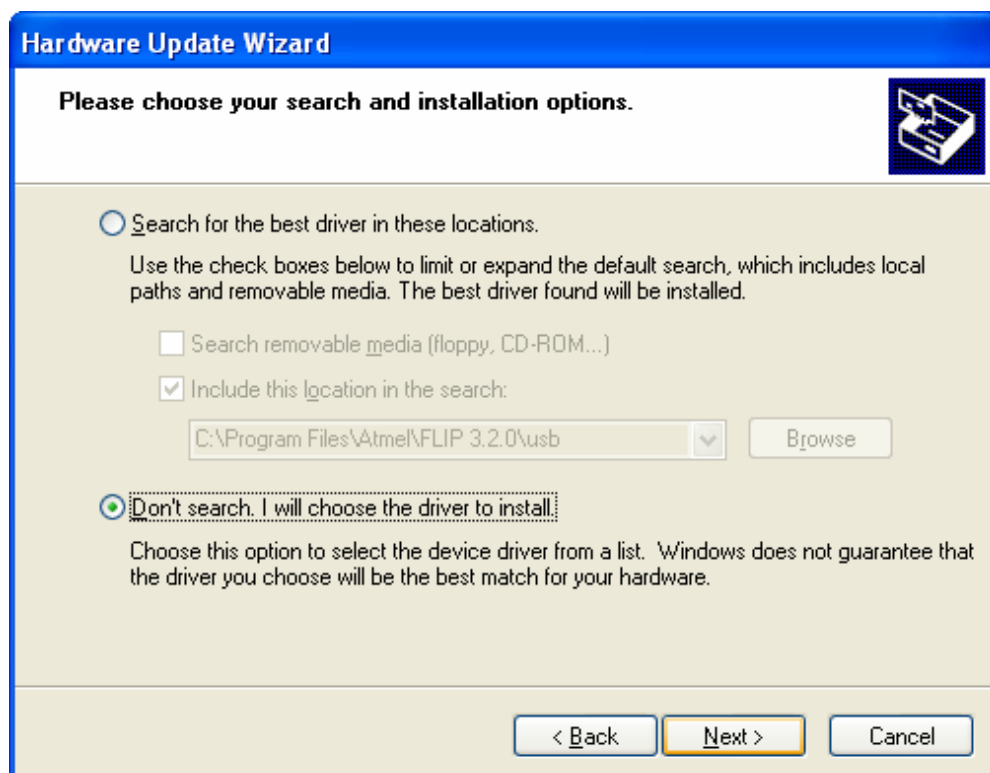
5. In the Hardware Update Wizard dialog, select the "No, not this time" option. Click Next >



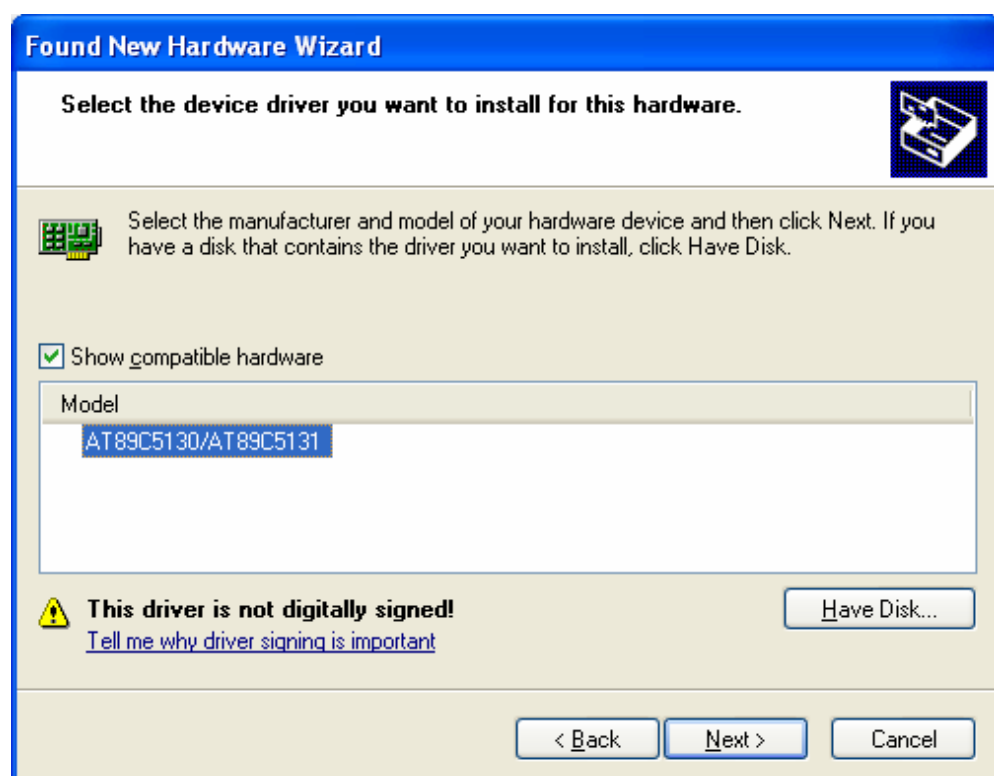
6. Select the Install from a list or specific location option. Click Next >



7. Select the Don't search. I will choose the driver to install option. Click Next >

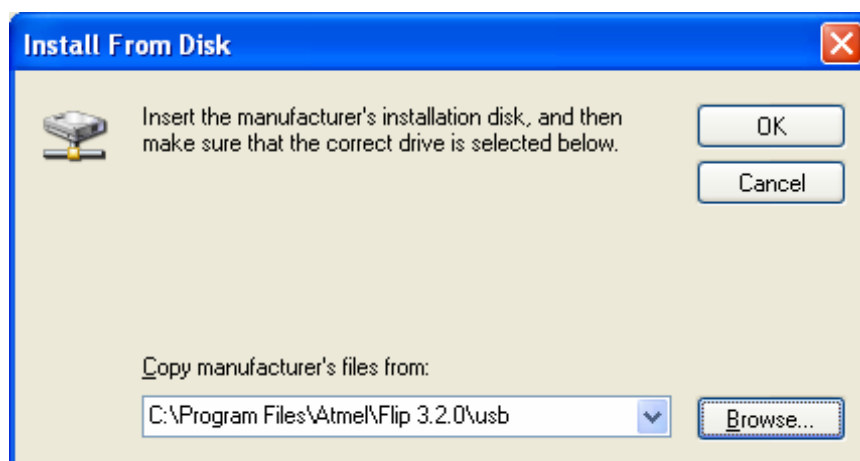


8. Then select Have a disk ... :

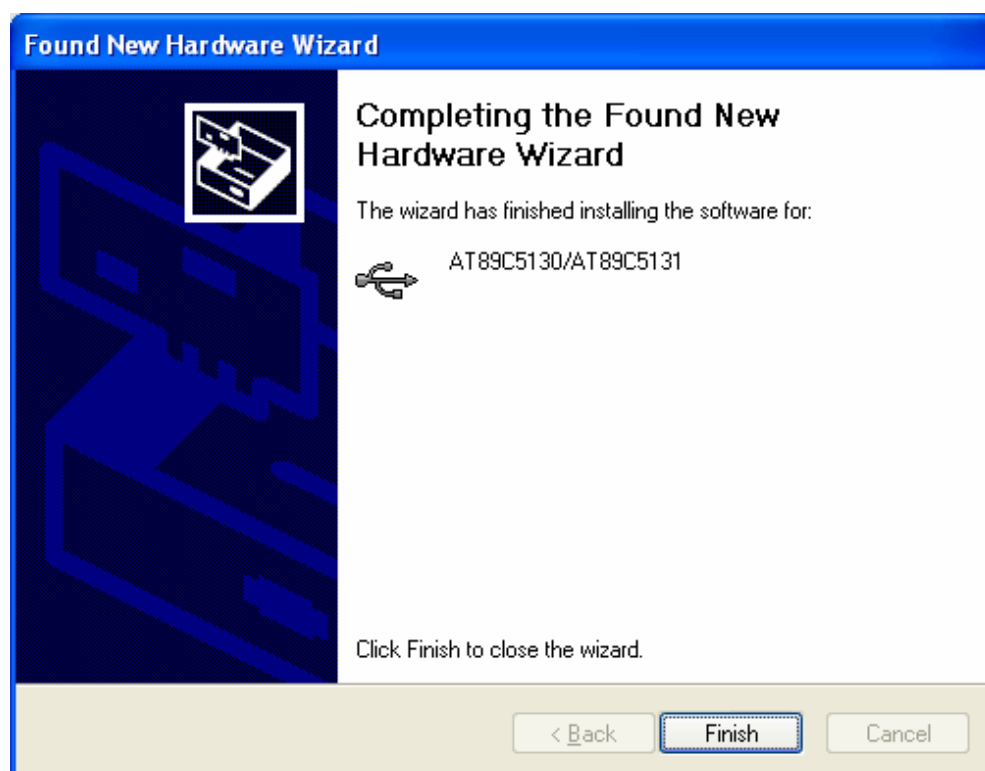


9. Click the Browse button to navigate to the Flip \usb folder; it contains the INF file. Click the OK button.

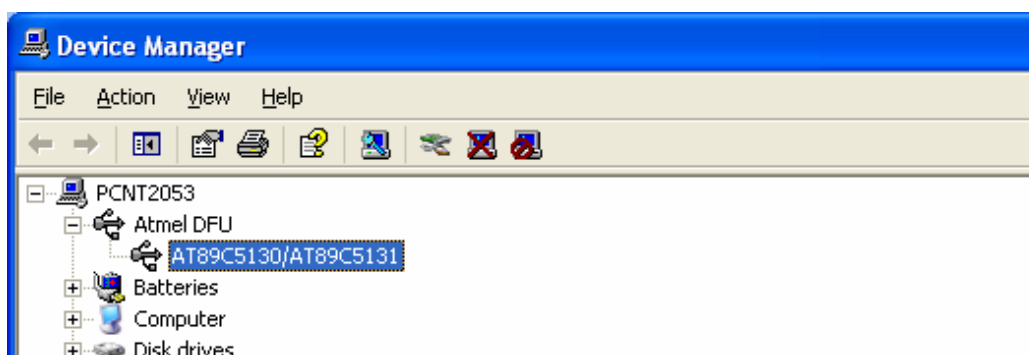
The pathname displayed here comes from our test machine; the actual pathname is the one of the Flip package you have installed.



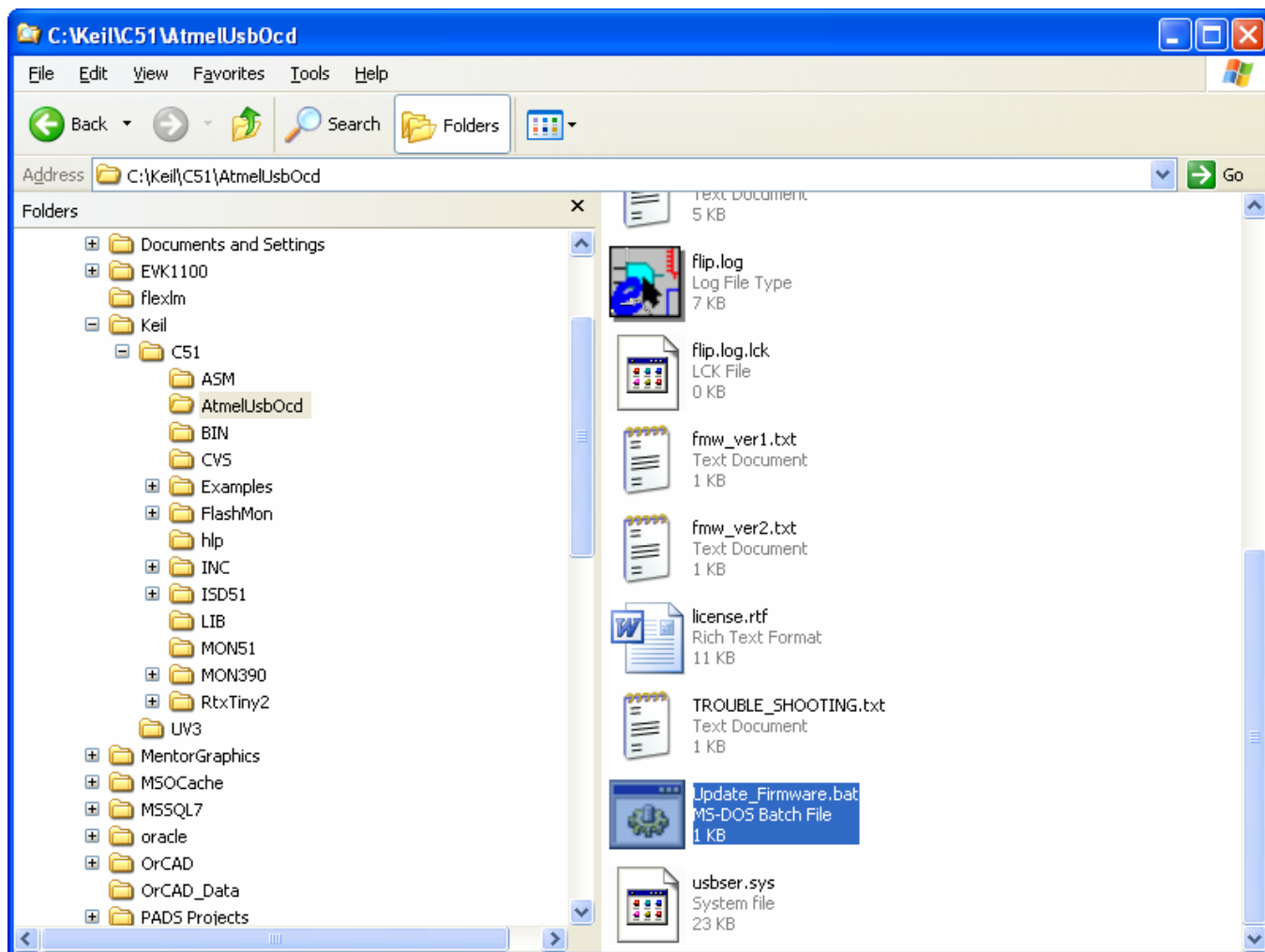
10. Click **Finish**



The Device Manager updates and shows the Atmel device in the section Atmel DFU. Please note that you may find your device under a section named LibUSB-Win32 Devices instead of the Atmel DFU one :

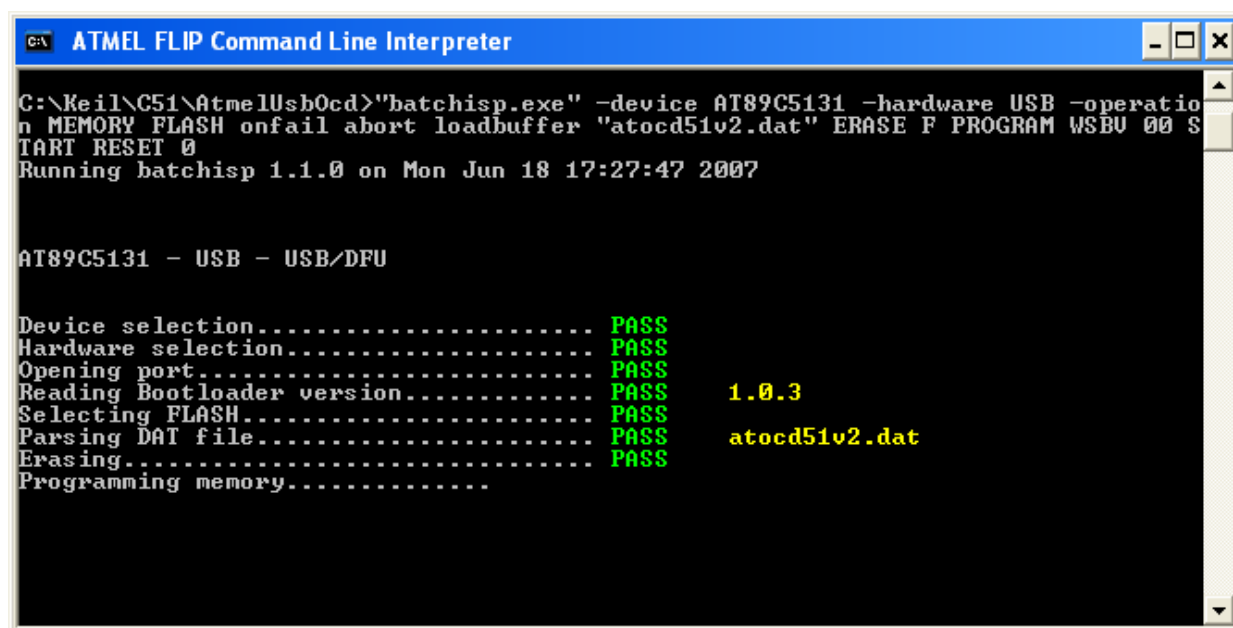


11. Then, execute the batch file : Update_Firmware.bat from the KEIL\C51\AtmelUsbOcd directory :



It will run "batchisp.exe" command line executable file in a command window to update the firmware of the Atmel OCD system :



A screenshot of a Windows command prompt window titled "ATMEL FLIP Command Line Interpreter". The window shows the execution of the "batchisp.exe" command with various parameters. The output indicates a successful update of the AT89C5131 device via USB/DFU. The status of each step is shown in green text, and the bootloader version and data file name are shown in yellow text.

```
C:\Keil\C51\AtmelUsbOcd>"batchisp.exe" -device AT89C5131 -hardware USB -operation MEMORY FLASH onfail abort loadbuffer "atocd51v2.dat" ERASE F PROGRAM WSBU 00 START RESET 0
Running batchisp 1.1.0 on Mon Jun 18 17:27:47 2007

AT89C5131 - USB - USB/DFU

Device selection..... PASS
Hardware selection..... PASS
Opening port..... PASS
Reading Bootloader version..... PASS    1.0.3
Selecting FLASH..... PASS
Parsing DAT file..... PASS    atocd51v2.dat
Erasing..... PASS
Programming memory.....
```

The OCD system is now updated properly, the KEIL μ vision session can be launched again and start.



Atmel Corporation

2325 Orchard Parkway
San Jose, CA 95131, USA
Tel: 1(408) 441-0311
Fax: 1(408) 487-2600

Regional Headquarters

Europe

Atmel Sarl
Route des Arsenaux 41
Case Postale 80
CH-1705 Fribourg
Switzerland
Tel: (41) 26-426-5555
Fax: (41) 26-426-5500

Asia

Room 1219
Chinachem Golden Plaza
77 Mody Road Tsimshatsui
East Kowloon
Hong Kong
Tel: (852) 2721-9778
Fax: (852) 2722-1369

Japan

9F, Tonetsu Shinkawa Bldg.
1-24-8 Shinkawa
Chuo-ku, Tokyo 104-0033
Japan
Tel: (81) 3-3523-3551
Fax: (81) 3-3523-7581

Atmel Operations

Memory

2325 Orchard Parkway
San Jose, CA 95131, USA
Tel: 1(408) 441-0311
Fax: 1(408) 436-4314

Microcontrollers

2325 Orchard Parkway
San Jose, CA 95131, USA
Tel: 1(408) 441-0311
Fax: 1(408) 436-4314

La Chantrerie
BP 70602
44306 Nantes Cedex 3, France
Tel: (33) 2-40-18-18-18
Fax: (33) 2-40-18-19-60

ASIC/ASSP/Smart Cards

Zone Industrielle
13106 Rousset Cedex, France
Tel: (33) 4-42-53-60-00
Fax: (33) 4-42-53-60-01

1150 East Cheyenne Mtn. Blvd.
Colorado Springs, CO 80906, USA
Tel: 1(719) 576-3300
Fax: 1(719) 540-1759

Scottish Enterprise Technology Park
Maxwell Building
East Kilbride G75 0QR, Scotland
Tel: (44) 1355-803-000
Fax: (44) 1355-242-743

RF/Automotive

Theresienstrasse 2
Postfach 3535
74025 Heilbronn, Germany
Tel: (49) 71-31-67-0
Fax: (49) 71-31-67-2340

1150 East Cheyenne Mtn. Blvd.
Colorado Springs, CO 80906, USA
Tel: 1(719) 576-3300
Fax: 1(719) 540-1759

Biometrics/Imaging/Hi-Rel MPU/

High Speed Converters/RF Datacom

Avenue de Rochepleine
BP 123
38521 Saint-Egreve Cedex, France
Tel: (33) 4-76-58-30-00
Fax: (33) 4-76-58-34-80

Literature Requests

www.atmel.com/literature

Disclaimer: The information in this document is provided in connection with Atmel products. No license, express or implied, by estoppel or otherwise, to any intellectual property right is granted by this document or in connection with the sale of Atmel products. **EXCEPT AS SET FORTH IN ATMEL'S TERMS AND CONDITIONS OF SALE LOCATED ON ATMEL'S WEB SITE, ATMEL ASSUMES NO LIABILITY WHATSOEVER AND DISCLAIMS ANY EXPRESS, IMPLIED OR STATUTORY WARRANTY RELATING TO ITS PRODUCTS INCLUDING, BUT NOT LIMITED TO, THE IMPLIED WARRANTY OF MERCHANTABILITY, FITNESS FOR A PARTICULAR PURPOSE, OR NON-INFRINGEMENT. IN NO EVENT SHALL ATMEL BE LIABLE FOR ANY DIRECT, INDIRECT, CONSEQUENTIAL, PUNITIVE, SPECIAL OR INCIDENTAL DAMAGES (INCLUDING, WITHOUT LIMITATION, DAMAGES FOR LOSS OF PROFITS, BUSINESS INTERRUPTION, OR LOSS OF INFORMATION) ARISING OUT OF THE USE OR INABILITY TO USE THIS DOCUMENT, EVEN IF ATMEL HAS BEEN ADVISED OF THE POSSIBILITY OF SUCH DAMAGES.** Atmel makes no representations or warranties with respect to the accuracy or completeness of the contents of this document and reserves the right to make changes to specifications and product descriptions at any time without notice. Atmel does not make any commitment to update the information contained herein. Unless specifically provided otherwise, Atmel products are not suitable for, and shall not be used in, automotive applications. Atmel's products are not intended, authorized, or warranted for use as components in applications intended to support or sustain life.

©2007 Atmel Corporation. All rights reserved. Atmel®, logo and combinations thereof, are registered trademarks, are the trademarks of Atmel Corporation or its subsidiaries. Other terms and product names may be trademarks of others.



Printed on recycled paper.



Section 1	
Introduction	1-3
1.1 Overview	1-3
1.2 Glossary	1-4
1.3 AT OCD51 emulator Features	1-4
1.4 Supported targets	1-4

Section 2	
Installing the AT OCD51 emulator	2-5
2.1 Prerequisites	2-5

Section 3	
Configuring the AT OCD51 emulator	3-8
3.1 Connector definition and target connection.....	3-8
3.4 Configuring AT OCD51 emulator under KEIL μ vision	3-11
3.5 Launching an AT89OCD-01 debug session under KEIL μ vision	3-16
3.6 Working within an AT89OCD-01 debug session under KEIL μ vision	3-18

Section 4	
Limitations.....	4-23

Section 5	
New features.....	5-24

Section 6	
Features Not Yet Implemented	6-25

Section 7	
Troubleshooting Guide	7-26

Section 8	
Technical Specifications	8-29

Section 9	
Technical Support.....	9-30



Mouser Electronics

Authorized Distributor

Click to View Pricing, Inventory, Delivery & Lifecycle Information:

Atmel:

AT89OCD-01