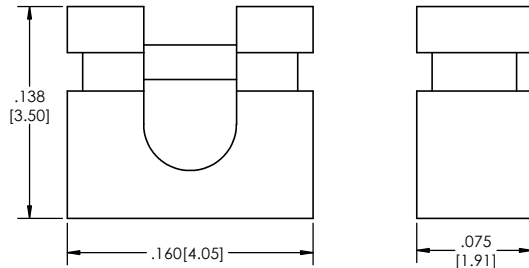
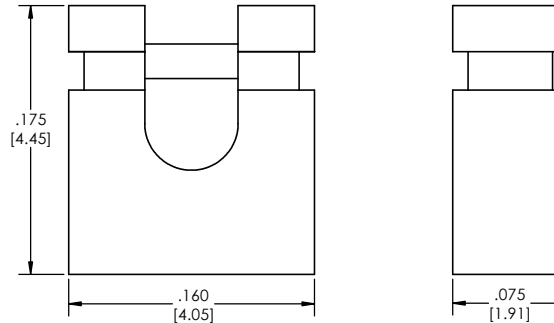


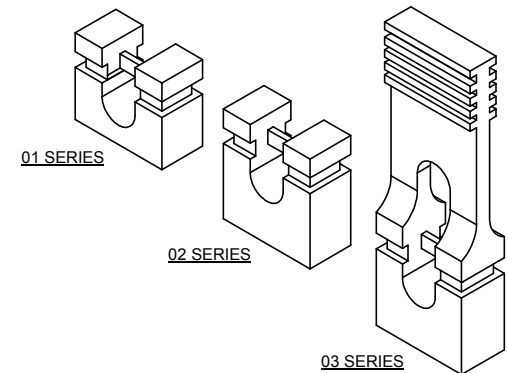
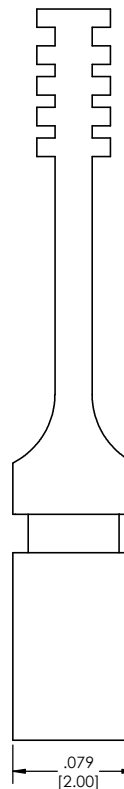
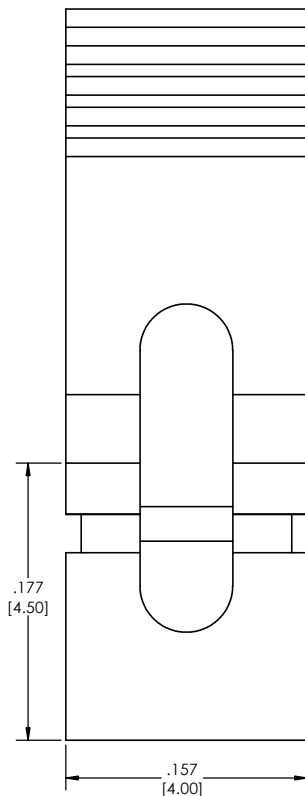
01 SERIES
LOW PROFILE
LOW INSERTION



02 SERIES
HIGH PROFILE
LOW INSERTION



03 SERIES
HIGH PROFILE
LOW INSERTION
HANDLE OPTION



SH-2 ☒ (A) ☒ (B) ☒ (C)

- A. Plating Options
- See Plating Options below
B. Shunt Style
- See Shunt Style box below
C. Lead Free

| Plating options | |
|-----------------|--|
| G | -10μ Gold on Contact Area/ Flash on Tail |
| F | - Gold Flash over Entire Pin |
| T | - Matte Tin all Over |

| Shunt Style | |
|-------------|---|
| 01 | 01 Series Low Profile, Low Insertion |
| 02 | 02 Series High Profile, Low Insertion |
| 03 | 03 Series High Profile, High Insertion |
| 04 | 04 Series High Profile, High Insertion, Handle Option |

Specifications:
Current Rating: 3.0 Ampere
Insulation Resistance: 1000M Ohms Min.
Dielectric Withstanding: 600V AC
Contact Resistance: 20M Ohms Max.
Operation Temperature: -40°C to +105°C
Max. Process Temperature
Peak: 260°C up to 10 secs.
Process: 230°C up to 60 secs.
Wave: 260°C up to 6 secs.
Manual Solder: 350°C up to 5 secs.

Materials:
Contact Material: Phosphor Bronze
Insulator Material: Nylon 6T

Tails may be clipped to achieve specific dimensions.

Products cut to specific sizes are uncancellable/ nonreturnable.
Parts are subject to change without notice.



PROPRIETARY AND CONFIDENTIAL
THE INFORMATION CONTAINED IN THIS
DRAWING IS THE SOLE PROPERTY OF
Major League Electronics. ANY
REPRODUCTION IN PART OR AS A WHOLE
WITHOUT THE WRITTEN PERMISSION OF
Major League Electronics IS
PROHIBITED.

| | | | | |
|---|--|--|--|--------------|
| UNLESS OTHERWISE SPECIFIED: | | NAME | | DATE |
| DRAWN | | EOW | | 01/22/14 |
| CHECKED | | GWE | | 01/22/14 |
| ENG APPR. | | | | |
| MFG APPR. | | | | |
| D.A. | | | | |
| INTERPRET GEOMETRIC TOLERANCING PER: | | ADDRESS: | | |
| MATERIAL | | 4235 Earnings Way | | |
| NEXT ASSY | | New Albany, IN 47150 | | |
| USED ON | | Phone: 812-944-7244 Fax: 812-944-7268 | | |
| APPLICATION | | e-Mail: mle@ml-electronics.com | | |
| DO NOT SCALE DRAWING | | TITLE: SH-2 SERIES | | |
| | | SIZE DWG. NO. | | REV |
| | | C | | A |
| | | SCALE 16:1 | | SHEET 1 OF 1 |

