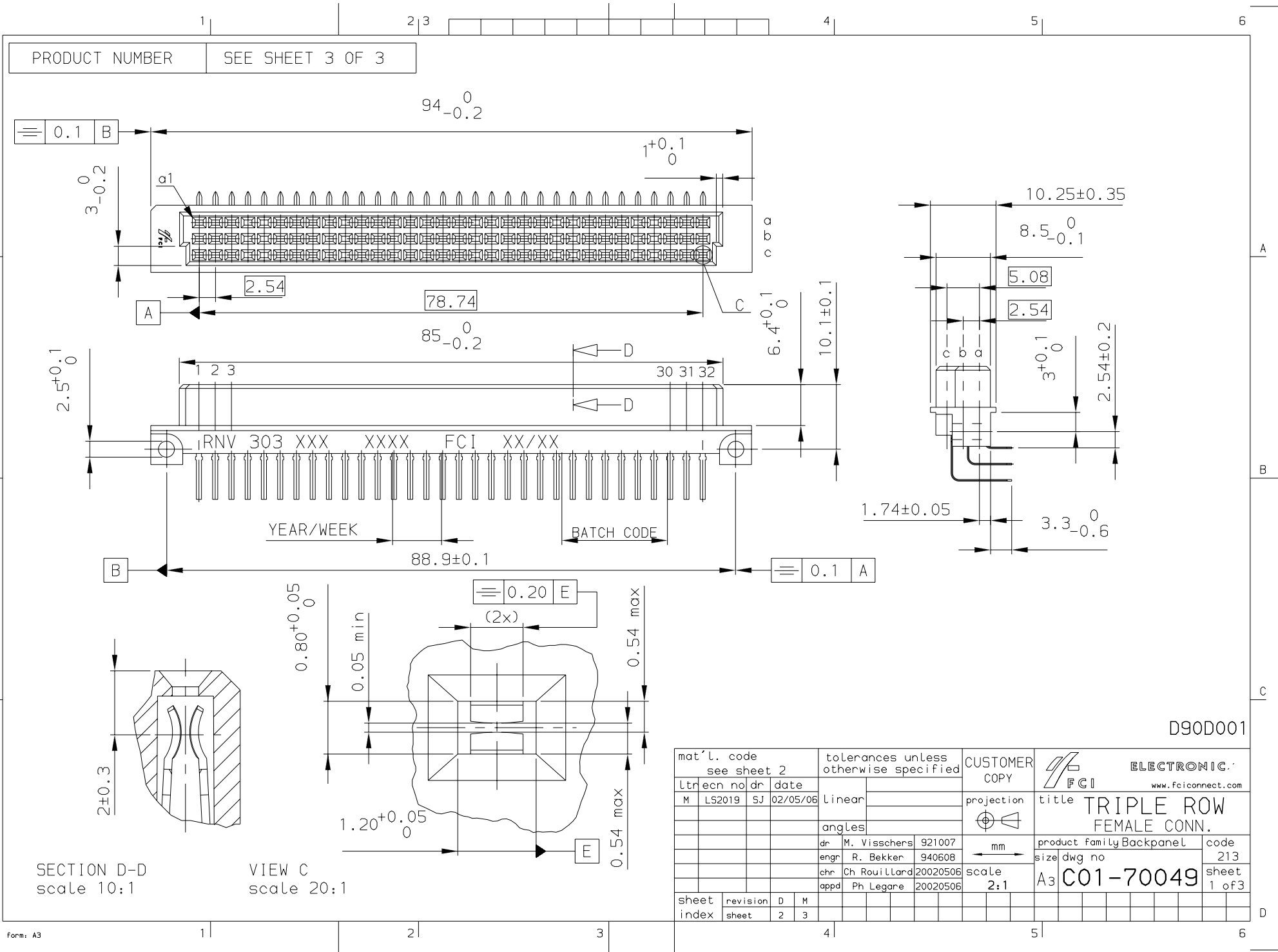


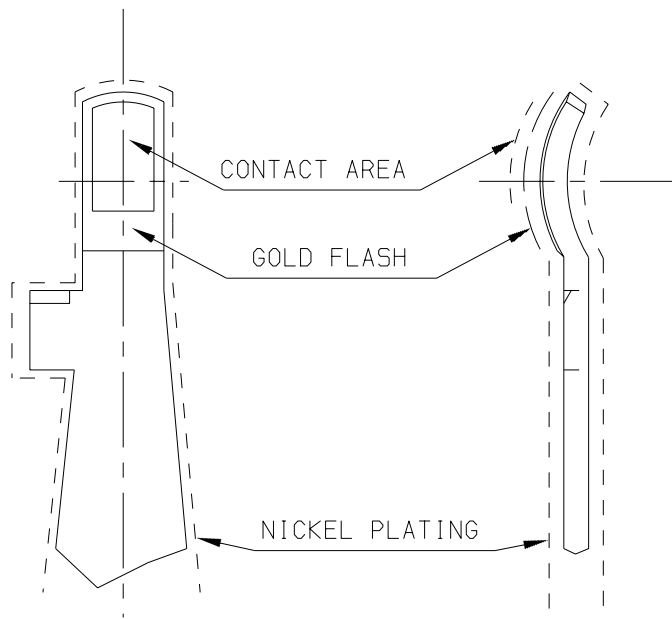
Tous droits strictement réservés. Reproduction ou communication a des tiers interdite sous quelque forme que ce soit sans autorisation écrite du propriétaire de FCI b.v.
© FCI b.v.

ALL rights strictly reserved. Reproduction or issue to third parties in any form whatever is not permitted without written authority from the proprietor of FCI b.v.
© FCI b.v.



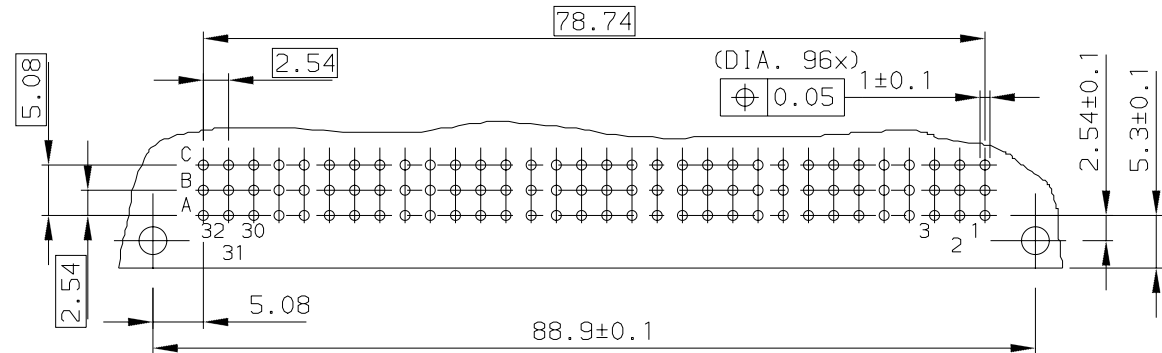
Tous droits strictement réservés. Reproduction ou communication a des tiers interdite sous quelque forme que ce soit sans autorisation écrite du propriétaire de FCI b.v.
© FCI b.v.

ALL rights strictly reserved. Reproduction or issue to third parties in any form whatever is not permitted without written authority from the proprietor of FCI b.v.
© FCI b.v.



PLATING AREAS, FOR THICKNESS SEE SHEET 3


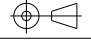
P.C.B. MOUNTING HOLE PATTERN



NOTES:

1. MAT'L OF TERMINALS: PHOSPHOR BRONZE
2. MAT'L OF BODY: THERMOPLASTIC POLYESTER 30% GLASS FILLED
COLOUR: SEE TABLE, FLAME RETARDANT PER UL-94-V0
3. DIMENSIONS ARE ACCORDING TO DIN 41612 STYLE R
4. CONTACT FORCE BETWEEN 0.5 AND 1.2 NEWTON

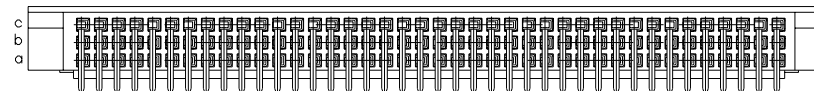
D90D001

mat'l. code see notes				tolerances unless otherwise specified				CUSTOMER COPY		 ELECTRONIC. www.fciconnect.com	
ltn		ecn no		dr		date		Linear		projection	
A		7767		ML0		880427					
B		H20656		MVI		921007		angles			
C		H40386		DDB		940608					
D		H80316		DDB		980526		dr		M. Visschers 921007	
								enrg		R. Bekker 940608	
								chr		M. Loman 921007	
								appd		H. Cooijmans 921001	
										mm	
										scale	
										2:1	
										A3	
										product family Backpanel	
										code	
										213	
										size dwg no	
										sheet	
										2 of-	
sheet		revision									
index		sheet									

Form: A3

Tous droits strictement réservés. Reproduction ou organisation de des tiers interdite sans quelque forme que ce soit sans autorisation écrite du propriétaire. FCI S.A. © FCI S.A.


All rights strictly reserved. Reproduction or issue by third party without written authority from the proprietor is not permitted in any form whatsoever. FCI S.A. © FCI S.A.



NOTE: This table corresponds to the termination end connectors view

PRODUCT NR	TERMINAL "X" PLACED IN POSITION																																COLOUR BODY	PLATING CODE	PRINTING			
	ROW	1	2	3	4	5	6	7	8	9	10	11	12	13	14	15	16	17	18	19	20	21	22	23	24	25	26	27	28	29	30	31			32	RNV-CODE	YEAR/WEEK	FCI BATCH CODE or DATE YEAR/MONTHS
70049-001	c		X		X		X		X		X		X		X		X		X		X		X		X		X		X		X		X		X		X	
	b																																					
70049-002	c		X		X		X		X		X		X		X		X		X		X		X		X		X		X		X		X		X		X	
	b		X		X		X		X		X		X		X		X		X		X		X		X		X		X		X		X		X		X	
70049-003	c	X	X	X	X	X	X	X	X	X	X	X	X	X	X	X	X	X	X	X	X	X	X	X	X	X	X	X	X	X	X	X	X	X	X	X		
	b	X	X	X	X	X	X	X	X	X	X	X	X	X	X	X	X	X	X	X	X	X	X	X	X	X	X	X	X	X	X	X	X	X	X	X		
70049-004	c	X	X	X	X	X	X	X	X	X	X	X	X	X	X	X	X	X	X	X	X	X	X	X	X	X	X	X	X	X	X	X	X	X	X	X		
	b	X	X	X	X	X	X	X	X	X	X	X	X	X	X	X	X	X	X	X	X	X	X	X	X	X	X	X	X	X	X	X	X	X	X	X		
70049-005	c		X		X		X		X		X		X		X		X		X		X		X		X		X		X		X		X		X		X	
	b			X			X			X			X		X			X		X			X		X			X		X			X		X		X	
70049-006	c		X		X		X		X		X		X		X		X		X		X		X		X		X		X		X		X		X		X	
	b		X		X		X		X		X		X		X		X		X		X		X		X		X		X		X		X		X		X	
70049-007	c	X		X		X		X		X		X		X		X		X		X		X		X		X		X		X		X		X		X		X
	b	X		X		X		X		X		X		X		X		X		X		X		X		X		X		X		X		X		X		X
70049-008	c	X		X		X		X		X		X		X		X		X		X		X		X		X		X		X		X		X		X		X
	b	X		X		X		X		X		X		X		X		X		X		X		X		X		X		X		X		X		X		X
70049-009	c		X		X		X		X		X		X		X		X		X		X		X		X		X		X		X		X		X		X	
	b		X		X		X		X		X		X		X		X		X		X		X		X		X		X		X		X		X		X	
70049-010	c	X	X	X	X	X	X	X	X	X	X	X	X	X	X	X	X	X	X	X	X	X	X	X	X	X	X	X	X	X	X	X	X	X	X	X	X	
	b	X	X	X	X	X	X	X	X	X	X	X	X	X	X	X	X	X	X	X	X	X	X	X	X	X	X	X	X	X	X	X	X	X	X	X	X	
70049-011	c		X		X		X		X		X		X		X		X		X		X		X		X		X		X		X		X		X		X	
	b		X		X		X		X		X		X		X		X		X		X		X		X		X		X		X		X		X		X	
70049-012	c		X		X		X		X		X		X		X		X		X		X		X		X		X		X		X		X		X		X	
	b		X		X		X		X		X		X		X		X		X		X		X		X		X		X		X		X		X		X	
70049-013	c		X		X		X		X		X		X		X		X		X		X		X		X		X		X		X		X		X		X	
	b		X		X		X		X		X		X		X		X		X		X		X		X		X		X		X		X		X		X	

Y	3 um Au over 3 um Ni	SnPb	Ni
PLATING CODE	CONTACT AREA	SOLDERTAIL	REMAINDER AREA
	PLATING		

mat'l. code see sheet 2	tolerances unless otherwise specified	CUSTOMER COPY		ELECTRONIC. www.fciconnect.com
LT/ecn noldr date	Linear	projection		
M LS2019 SJ 20020423	angles	mm	product family Backpanel	code 213
	dr. W. Kusters 900130	scale 2:1	size dwg no	sheet 3 of -
	enr. R. Bekker 940608			
	chr. Ch RouilLard 20020423			
	appd. Ph Legare 20020423			
sheet index	revision sheet			