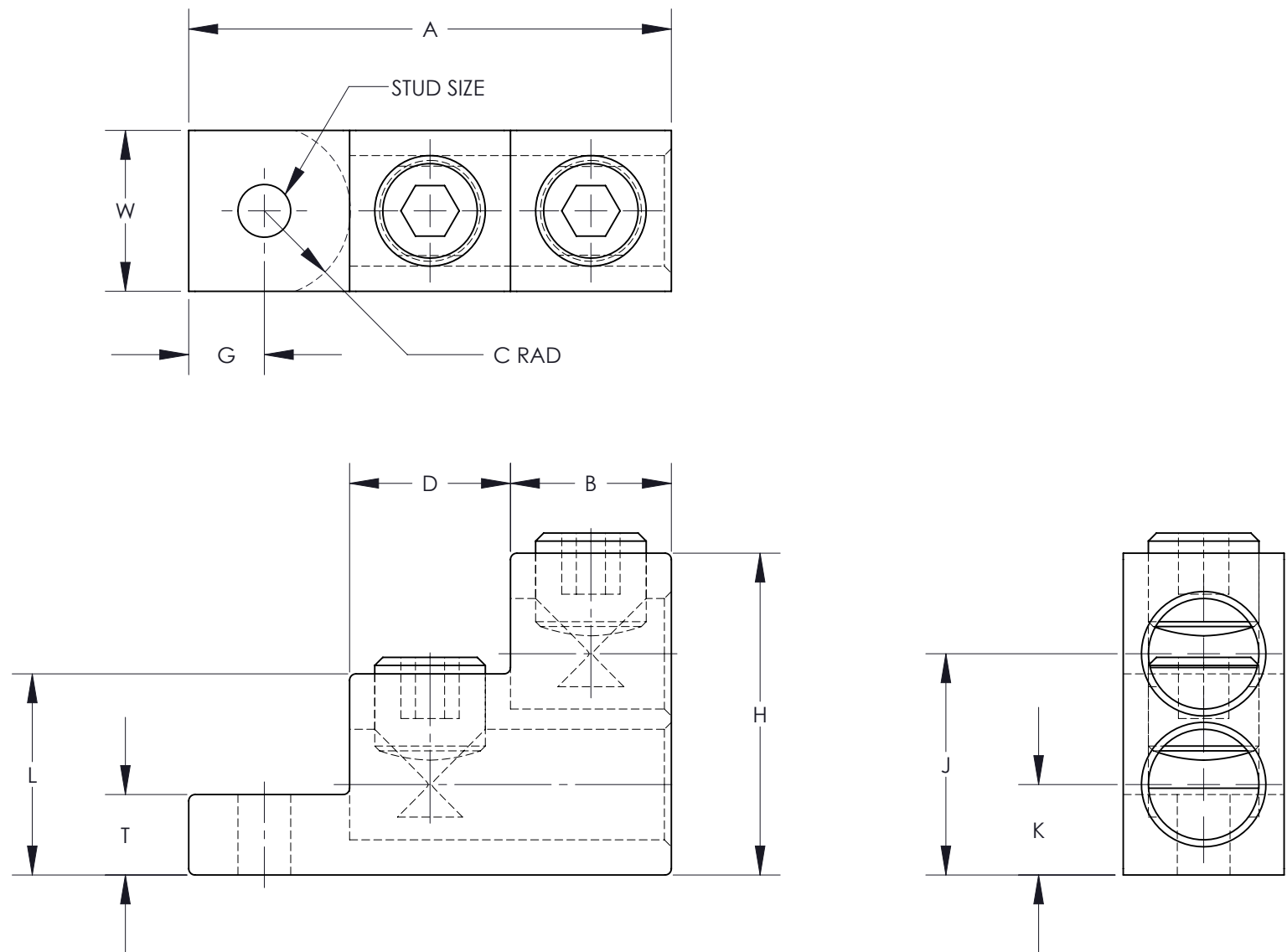
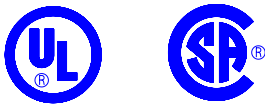


NOTES:

1. MATERIAL:
BODY - ALUMINUM, TIN PLATED
SCREW - ALUMINUM, TIN PLATED
2. UL LISTED & CSA CERTIFIED FOR USE UP TO 600V & TEMPERATURE RATED 90°C (AL9CU)
3. DUAL RATED FOR USE WITH COPPER OR ALUMINUM STRANDED CODE CONDUCTOR
4. THESE PARTS ARE RoHS COMPLIANT
5. USE OF OXIDE INHIBITING JOINT COMPOUND LIKE PANDUIT CMP-100 RECOMMENDED FOR PAD TO PAD AND CONDUCTOR SURFACES
6. SEE PACKAGING LABEL FOR TIGHTENING TORQUE INFORMATION
7. PKG QTY:
3 = 3



PART NUMBER	DIMENSIONS - IN [mm] +/- .02 [.5]											STUD SIZE	WIRE STRIP LENGTH	WIRE RANGE	HEX KEY*
	A	B	D	G	T	H	W	C MAX.	J	K	L				
LAM2SA300-56-3	3.00 [76.2]	1.00 [25.4]	1.00 [25.4]	.47 [11.9]	.50 [12.7]	2.00 [50.8]	1.00 [25.4]	.53 [13.5]	1.38 [35.1]	.56 [14.2]	1.25 [31.8]	5/16	1.02 [25.9]	300kcmil-6 AWG	5/16

* HEX SIZE MAY DIFFER FROM CHART. DIFFERENCE IN SIZE WILL NOT AFFECT FIT, FORM, OR FUNCTION OF PART

										<div><div>PANDUIT</div><div>CORP. TINLEY PARK, ILLINOIS</div></div>					
										LAM2SA SERIES ALUMINUM MECHANICAL LUGS CUSTOMER DRAWING					
										UNLESS OTHERWISE SPECIFIED DIMENSIONAL TOLERANCES ARE: (.X) ± (.XXX) ± (.XX) ± ANGLES ±		UNLESS OTHERWISE SPECIFIED, ALL DIMENSIONS ARE GIVEN IN INCHES, THIRD ANGLE PROJECTION			
02	6/11	JHNU	RGB	B. REVISED PART NUMBER: LAM2SA300-56-3 WAS LAM2SA300-56-3Y	N41360BB-C41360	RGB	RGB			DRAWN BY CJW		MAT'L:	SCALE NONE		
01	9/10	JHNU	JHNU	A. REVISED DIMENSIONS FOR LAM2SA300-56	N41360BB-C41360	FLD	FLD			DATE 12/02			DRAWING NO / CAD FILE		DWG B SIZE
00	2/06	JHNU	LEM	DRAWING RELEASED									C41360_02		
REV	DATE	BY	CHK	DESCRIPTION	ECN	-R	SUP	CHK'D							

Mouser Electronics

Authorized Distributor

Click to View Pricing, Inventory, Delivery & Lifecycle Information:

Panduit:

[LAM2SA300-56-3](#)