

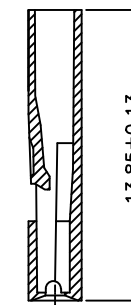
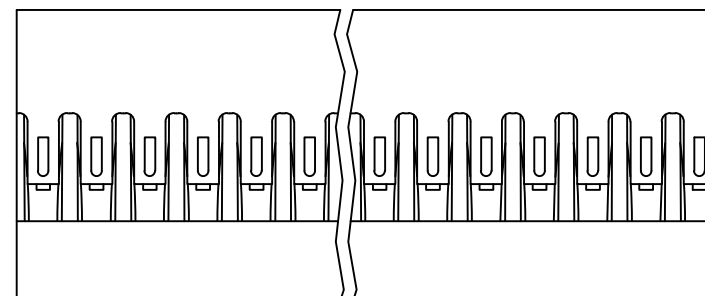
PRODUCT NUMBER
65039-YXX(E)LF

DESIGN CODE _____
0 = STANDARD
2 = OPTIONAL RIB
SEE SHEET 2

PIN STYLE _____
SEE SHEET 2

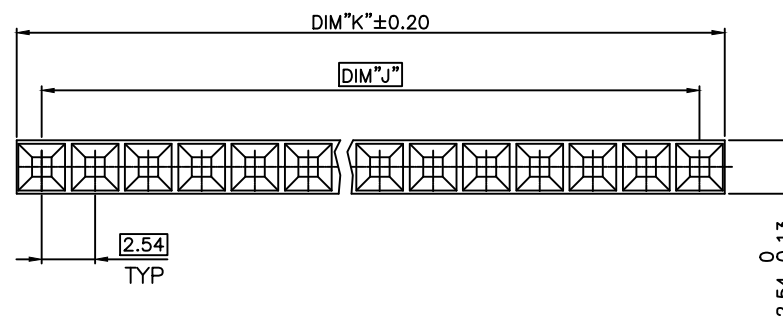
INDICATES THE PRODUCT IS RoHS
COMPLIANT, SEE NOTE 6

65039-YXXLF OR 65039-YXXELF ARE
EXACTLY THE SAME PRODUCTS.
EXTENSION "E" JUST FOR OLD EUROPEAN
DESIGN AND MANUFACTURING SITE



NOTES:

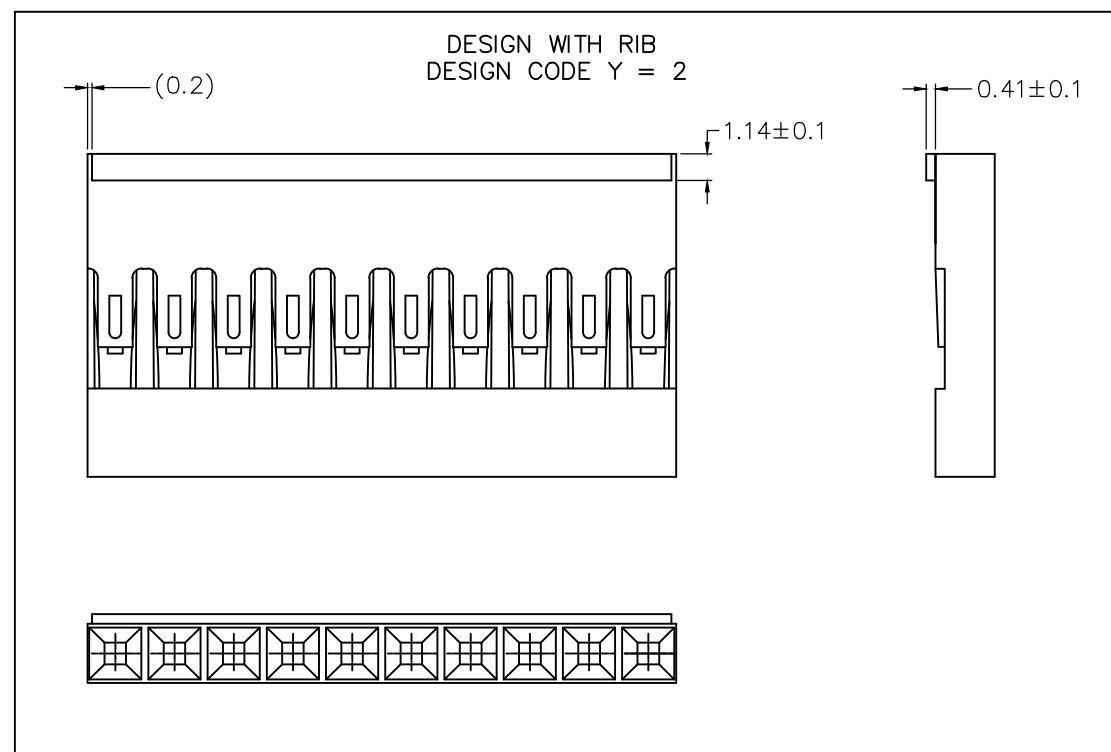
- MOLDING MATERIAL : MODIFIED POLYPHELYNENE
COLOR BLACK, UL 94 V0
- LATCH MUST WITHSTAND 18N MIN PULL OUT FORCE
- STANDARD PACKAGING IN POLYBAGS
- TERMINALS MUST BE CRIMPED PROPERLY FOR
SATISFACTORY LATCHING :
- FOR CRIMPING INSTRUCTIONS, SEE TA-75 AND TA-295
- FOR TERMINAL APPLICATION SEE TA-531.
PRODUCT SPECIFICATION: BUS-12-067.
- THIS HOUSING IS INTENDED FOR USE WITH
MINI PV TERMINAL WITH 22-36 GAUGE WIRE
- RoHs COMPLIANT PRODUCT SPECIFICATIONS :
- MEETS PACKAGING SPECS AS PER GS-14-920
- PRODUCT MEETS EUROPEAN UNION DIRECTIVES
AND OTHER COUNTRY REGULATIONS AS
DESCRIBED IN GS-22-008.
- THE PRODUCT IS NOT INTENDED TO BE EXPOSED
TO A MANUFACTURING SOLDER PROCESS.



PRELIMINARY

mat'l. code SEE NOTES				surface ISO 1302 ✓	tolerance ISO 406 ISO 1101	projection mm	product family BERCONN			
ltr	ecn	no	dr	date	tolerances unless otherwise specified		mm scale 5:1	title MINI LATCH SR		
BE	V07-0483	HTB		07.07.24	angles	.X ±0.3		POLARIZED HSG 2.54mm		
BF	F12-0064	LMU		12.06.08	linear	.XX ±0.13		dwg no		
BG	B-14321	LMU		13.03.21		.XXX ±0.05		sheet 1 of 2		
BH	B-18693	LMU		14.08.29	dr	L.MULIN	12.06.08	size		
					engr	L.MULIN	12.06.08	65039		
					chr			A3		
					appd	JCO	12.06.08	type		
								CUSTOMER Drawing		
sheet index	revision sheet	BH	BG							
		1	2							

PIN STYLE	No. OF POS.	DIM J	DIM K
36	1x01	N/A	2.39
35	1x02	2.54	4.93
34	1x03	5.08	7.47
33	1x04	7.62	10.01
32	1x05	10.16	12.55
31	1x06	12.70	15.09
30	1x07	15.24	17.63
29	1x08	17.78	20.17
28	1x09	20.32	22.71
27	1x10	22.86	25.25
26	1x11	25.40	27.79
25	1x12	27.94	30.33
24	1x13	30.48	32.87
23	1x14	33.02	35.41
22	1x15	35.56	37.95
21	1x16	38.10	40.49
20	1x17	40.64	43.03
19	1x18	43.18	45.57
18	1x19	45.72	48.11
17	1x20	48.26	50.65
16	1x21	50.80	53.19
15	1x22	53.34	55.73
14	1x23	55.88	58.27
13	1x24	58.42	60.81
12	1x25	60.96	63.35
11	1x26	63.50	65.89
10	1x27	66.04	68.43
09	1x28	68.58	70.97
08	1x29	71.12	73.51
07	1x30	73.66	76.05
06	1x31	76.20	78.59
05	1x32	78.74	81.13
04	1x33	81.28	83.67
03	1x34	83.82	86.21
02	1x35	86.36	88.75
01	1x36	88.90	91.29



PRELIMINARY

mat'l. code				surface	tolerance	projection	product family		
				ISO 1302	ISO 406 ISO 1101		BERCONN		
ltr	ecn no	dr	date	tolerances unless otherwise specified		mm	title		
BE	V07-0483	HTB	07.07.24	angles	linear		MINI LATCH SR		
BF	F12-0064	LMU	12.06.08				POLARIZED HSG 2.54mm		
BG	B-18693	LMU	14.08.29			scale 5:1	dwg no		
				dr	L.MULIN	12.06.08	sheet 2 of		size
				engr	L.MULIN	12.06.08	65039		A3
				chr			type		Drawing
				appd	JCO	12.06.08	CUSTOMER		
sheet index	revision sheet								

Mouser Electronics

Authorized Distributor

Click to View Pricing, Inventory, Delivery & Lifecycle Information:

FCI:

[65039-002LF](#)