

4

3

2

1

THIS DRAWING IS UNPUBLISHED.

RELEASED FOR PUBLICATION

© COPYRIGHT

ALL RIGHTS RESERVED.

LOC

DIST


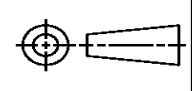
REVISIONS

P	LTR	DESCRIPTION	DATE	DWN	APVD
	H4	ECR-13-019320	26DEC2013	RS	LZ

REPLACED BY OCEAN STYLE APPLICATOR PART
NUMBER 2151139-1

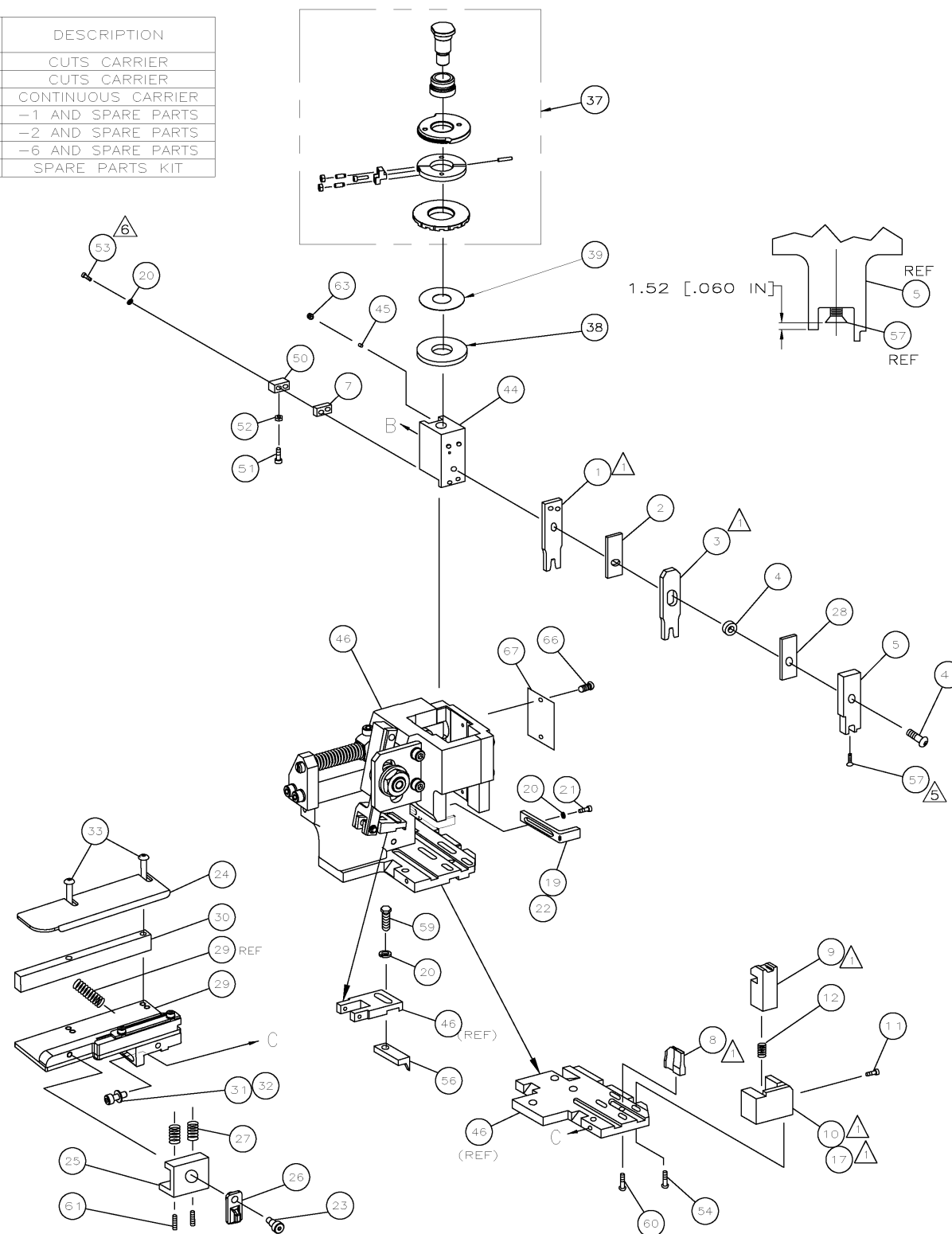
FOR REPLACEMENT PARTS FOR APPLICATOR 1528079
REFER TO ADDITIONAL PAGE(S). SPARE PARTS KIT (IF LISTED)
WILL REMAIN AVAILABLE.

THE REPLACEMENT OCEAN STYLE APPLICATOR HAS THE
SAME TERMINATOR/PRESS INTERFACE AS APPLICATOR
1528079

THIS DRAWING IS A CONTROLLED DOCUMENT.		DWN R.SHEN		 TE Connectivity			
DIMENSIONS:		CHK LJ.ZHANG					
		APVD U.GUO		NAME FINE ADJ SIDE FD HD-1 APPL			
		PRODUCT SPEC					
		APPLICATION SPEC					
MATERIAL		WEIGHT		SIZE A3	CAGE CODE	DRAWING NO C- 1528079	RESTRICTED TO
FINISH		CUSTOMER DRAWING		SCALE		SHEET 1 OF 2	REV H4

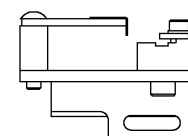
[illegible]

SEAL NO.	INS. RANGE
828920	1.2 - 2.0mm [.047 - .083 IN]
828904	1.2 - 2.0mm [.047 - .083 IN]



	-	1	1	1	1	1	1	1528079	PRINT, APPLICATOR LOG SHEET	72
	-	1	1	1	1	1	1	1338705-3	DOCUMENTATION PACKAGE	71
										70
										69
										68
	-	1	1	1	1	1	1	461264-5	PLATE, IDENTIFICATION	67
	-	2	2	2	2	2	2	21017-2	SCR,DRIVE(#2x.19)ID PLATE	66
										65
										64
	-	1	1	1	1	1	1	3-18031-0	SCR,SKT SET(M6X6 LW)RAM	63
										62
	-	2	2	2	2	2	2	2-18032-5	SCR,SET(M5X20)DRAG	6
	-	1	1	1	1	1	1	18024-7	SCR,BHC(M4X10)ANVIL	60
	-	1	1	1	1	1	1	5-18022-2	SCR,HEX(M4X8)FEED FINGER	59
										58
	-	1	1	1	1	1	1	985575-3	SCR,FHC(M3X10)DEP	57
	-	1	1	1	1	1	1	1338685-1	PAWL, FEED	56
										55
S	-	2	2	2	2	2	2	18024-8	SCR,BHC(M4x12)SHEAR HOLDER	54
	-	2	2	2	2	2	2	9-18023-6	SCR,SHC(M4x14)TERM HDWN	53
	-	1	1	1	1	1	1	18030-1	NUT,HEX(M3)HOLD DOWN	52
	-	1	1	1	1	1	1	811242-5	BUMPER, HOLDDOWN	51
	-	1	1	1	1	1	1	690753-2	SPACER, TONKER	50
	-	1	1	1	1	1	1	18024-3	SCR,BHC(M3X10)CAM	49
	-	-	1	-	-	1	-	1338675-1	CAM, PRE FEED 30 & 40 mm ST	48
	-	1	-	1	1	-	1	1338676-1	CAM, POST FEED 30 & 40 mm ST	47
	-	1	1	1	1	1	1	1320999-3	APPLICATOR BASIC SUBASSY	46
	-	1	1	1	1	1	1	690191-1	PLUG, NYLON	45
	-	1	1	1	1	1	1	1338660-1	RAM	44
										43
										42
	-	1	1	1	1	1	1	2-18024-6	SCR,BHC(M8X25)RAM	41
										40
	-	1	1	1	1	1	1	690125-1	SHIM SUBASSY	39
	-	1	1	1	1	1	1	469367-9	SPACER, FINE ADJUST	38
	-	1	1	1	1	1	1	879103-3	FINE ADJUST HEAD SUBASSY	37
										36
										35
										34
	-	2	2	2	2	2	2	1-18024-0	SCR,BHC(M4X20)STRIP GUIDE	33
	-	1	1	1	1	1	1	18027-2	WASHER, FLAT(M4)	32
	-	1	1	1	1	1	1	1-18023-2	SCR,SKT CAP(M4X12)MOUNT BLOCK	31
	-	1	1	1	1	1	1	1320908-2	SPACER, STRIP GUIDE	30
	-	1	1	1	1	1	1	1633073-1	STRIP GUIDE PLATE ASSY	29
	-	1	1	1	1	1	1	1-455888-9	SPACER, FRONT SHEAR DEP	28
	-	2	2	2	2	2	2	1-22284-0	SPRING, DRAG	27
	-	1	1	1	1	1	1	356835-1	LEVER, DRAG RELEASE	26
	-	1	1	1	1	1	1	240792-1	DRAG, TERMINAL	25
	-	1	1	1	1	1	1	1320928-1	GUIDE, STRIP (REAR)	24
	-	1	1	1	1	1	1	980371-4	SCR,SHC SHLD	23
	-	1	-	1	1	-	1	690472-2	STRIPPER	22
	-	1	1	1	1	1	1	1-18023-1	SCR,SHC(M4X10)STRIPPER	21
	-	4	4	4	4	4	4	18025-2	WASHER,LOCK(M4)STRIPPER	20
	-	-	1	-	-	1	-	690472-1	STRIPPER	19
										18
1	-	1	-	-	1	-	-	1338684-2	HOLDER, SHEAR, FRONT (NO-CUT)	17
										16
										15
										14
										13
	-	1	1	1	1	1	1	3-22280-3	SPRING, SHEAR	12
	-	1	1	1	1	1	1	356885-5	STOP, SHEAR	11
}	-	-	1	1	-	1	1	1-1320921-0	HOLDER, SHEAR, FRONT (CUT)	10
	-	1	1	1	1	1	1	318707-1	SHEAR, FLOAT (FRONT)	9
	1	2	2	2	1	1	1	1338693-1	ANVIL	8
	-	1	1	1	1	1	1	3-240641-8	SPACER, DEPRESSOR (REAR)	7
										6
	-	1	1	1	1	1	1	1338680-1	DEPRESSOR, SHEAR (FRONT)	5
	-	1	1	1	1	1	1	3-238011-3	SPACER, BLOCK CRIMPER	4
1	1	2	2	2	1	1	1	8-683454-9	CRIMPER, INSULATION	3
	-	1	1	1	1	1	1	1-455888-1	SPACER, CRIMPER	2
1	1	2	2	2	1	1	1	1-456405-6	CRIMPER, WIRE	1
	-77	-76	-72	-71	-6	-2	-1	PART NO	DESCRIPTION	ITEM

* **WARNING:**
ON INSTALLATION, SET WIRE DISC TO LARGEST WIRE SIZE
SETTING. USE OF SETTINGS BELOW MIN REQ'D CRIMP
HEIGHT SETTING WILL CAUSE DAMAGE TO CRIMP TOOLING.



THIS DRAWING IS A CONTROLLED DOCUMENT.		DIN L LOFHOUSE 1 JAN02		Tyco Electronics Corporation Harrisburg, PA 17105-3608	
DIMENSIONS: INCHES		TOLERANCES UNLESS OTHERWISE SPECIFIED:		NAME	

Mouser Electronics

Authorized Distributor

Click to View Pricing, Inventory, Delivery & Lifecycle Information:

[TE Connectivity:](#)

[1528079-6](#)