

YF Series

4 Tumbler Miniature Switchlocks

Features/Benefits

- Multi-pole and multi-position
- Positive detent
- Low level and power capability

Typical Applications

- Computer servers
- Point-of-sale terminals
- Cash registers



Models Available

Specifications

CONTACT RATING: Q contact material: 4 AMPS @ 125 V AC or 28 V DC; 2 AMPS @ 250 V AC (UL/CSA). See page L-14 for additional ratings.

ELECTRICAL LIFE: 10,000 make-and-break cycles at full load.

CONTACT RESISTANCE: Below 10 m Ω typ. initial @ 2-4 V DC, 100 mA, for both silver and gold plated contacts.

INSULATION RESISTANCE: 10⁹ Ω min.

DIELECTRIC STRENGTH: 1,000 Vrms min. @ sea level.

INDEXING: 45°:3 positions max., 90°:2 positions max.

Materials

LOCK: Zinc alloy with stainless steel facing. 4 tumbler, single bitted lock with integral detent mechanism.

KEYS: Two nickel plated brass keys with code number.

SWITCH HOUSING: 6/6 Nylon (UL 94V-2).

CONTACTS & TERMINALS: Q contact material: Copper, silver plated. See page L-14 for additional contact materials.

MOUNTING NUT: Brass, bright zinc plated.

TERMINAL SEAL: Epoxy.

NOTE: Any models supplied with Q or B contact material are RoHS compliant.

NOTE: Specifications and materials listed above are for switchlocks with standard options. For information on specific and custom switchlocks, consult Customer Service Center.

Build-A-Switch

To order, simply select desired option from each category and place in the appropriate box. Available options are shown and described on pages L-12 through L-14. For additional options not shown in catalog, consult Customer Service Center.

Switch and Lock Function		Keying		Lock Type		Lock Finish		Terminations		Mounting Style		Contact Material	
YF0113	SP, 900 Index, keypull pos. 1	2	Two nickel plated brass keys	C	4 Tumbler, single bitted lock with detent	2	Stainless steel facing	03	Solder lug with hole	N	With nut	Q	Silver
YF2113	DP, 90° Index, keypull pos. 1					8	Gloss black facing	WC	Wire lead			B	Gold
YF011U	SP, 90° Index, keypull pos. 1 & 2												
YF211U	DP, 90° Index, keypull pos. 1 & 2												



Dimensions are shown: Inch (mm)
Specifications and dimensions subject to change



Switchlock

C&K YF Series

4 Tumbler Miniature Switchlocks

SWITCH AND LOCK FUNCTION

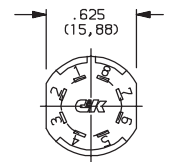
SINGLE & DOUBLE POLE SWITCHES							
NO. POLES	MODEL NO.	CONNECTED TERMINALS			KEY PULL POSITIONS	LOCK CONFIGURATION	INDEXING
		POS. 1	POS. 2	POS. 3			
SP DP	YF0113 YF2113	8-1 8-1, 4-5	1-3 1-3, 5-7		Position 1		90°
SP DP	YF011U YF211U	8-1 8-1, 4-5	1-3 1-3, 5-7		Positions 1 & 2		

All models with all options when ordered with 'Q' contact material.

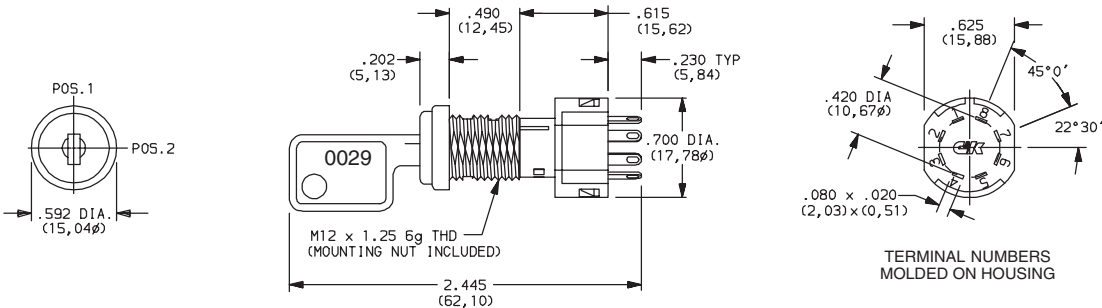
LEGEND

- = Detent Positions (45° or 90°)
- ⊙ = Key pull possible in these positions.
- ⦿ = Stop Positions

TERMINAL NUMBERS



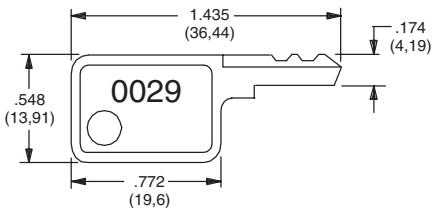
Terminal numbers molded on bottom of housing.



Part number shown: YF01132C203NQ

KEYING

2 TWO NICKEL PLATED BRASS KEYS



Key Part Number: 119091029

NOTE: All orders keyed alike with code number on key. For more than one key code, replacement keys, or other special features, consult Customer Service Center.



Third Angle
Projection

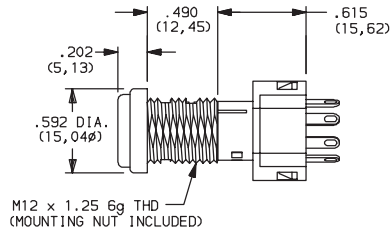
Dimensions are shown: Inch (mm)
Specifications and dimensions subject to change



C&K YF Series 4 Tumbler Miniature Switchlocks

The diagram illustrates a neural network architecture. It starts with a large black rectangular input layer on the left, followed by a small black rectangular hidden layer. This is connected to a large white rectangular output layer, which is then followed by a sequence of four smaller white rectangular layers, each connected by a horizontal line.

C 4 TUMBLER, SINGLE BITTED LOCK WITH DETENT



2 STAINLESS STEEL FACING

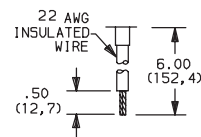
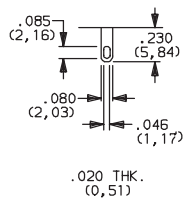
8 GLOSS BLACK FACING



The diagram shows a horizontal sequence of nodes connected by arrows. It starts with a large black rectangle, followed by three small black squares, then a white rectangle divided vertically into two equal halves, and finally two small white squares. Arrows connect each node to the next one in the sequence.

03 SOLDER LUG WITH HOLE

WC WIRE LEAD



Black wire standard, other colors and lengths available, consult Customer Service Center. UL style 1015.



Switchlock



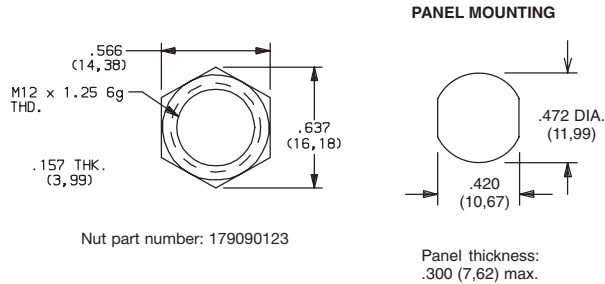
Dimensions are shown: Inch (mm)
Specifications and dimensions subject to change

YF Series

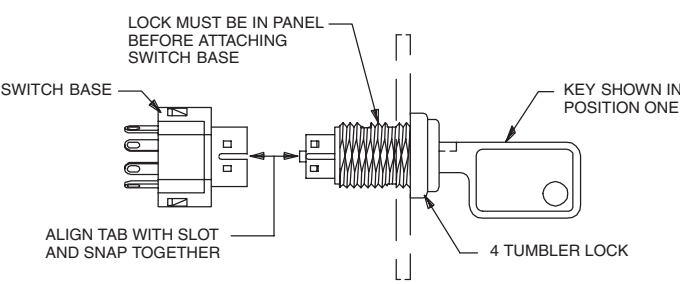
4 Tumbler Miniature Switchlocks

MOUNTING STYLE

N WITH NUT



Switch and Lock Assembly Instructions




NOTE: Switch installation is permanent. Switch cannot be removed from lock after assembly. Attempts to separate switch and lock may damage switch.

CONTACT MATERIAL

OPTION CODE	RoHS COMPLIANT*	RoHS COMPATIBLE*	CONTACT AND TERMINAL MATERIAL	RATING	
Q	YES	YES	SILVER ²	POWER	4 AMPS @ 125 V AC or 28 V DC; 2 AMPS @ 250 V AC (UL/CSA).
B	YES	YES	GOLD ¹	LOW LEVEL/DRY CIRCUIT	0.4 VA MAX. @ 20 V AC or DC MAX.

* Note: See Technical Data section of this catalog for RoHS compliant and compatible definitions and specifications.

¹ CONTACTS & TERMINALS: Copper, with gold plate over nickel plate.
² CONTACTS & TERMINALS: Copper, silver plated (standard with all termination options).

All models  with all options when ordered with 'Q' contact material.

AVAILABLE HARDWARE



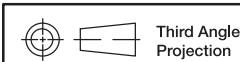
Key Code: 0029
PART NO. (ONE KEY)
960B10029

Material: Brass
Finish: Nickel plate



L

Switchlock



Dimensions are shown: Inch (mm)
Specifications and dimensions subject to change