

Pressure Gauge for General Purpose/With limit indicator

G36, GA36

O.D.: ø37



G36-10-01

- Be sure to read the precautions on page 14-11-15 for selection and installation.

Standard Specifications

Model		G36	GA36
Type		Back side thread	Vertical side thread
Port size ⁽¹⁾		R 1/8 (Option M: With M5 female thread)	
Fluid ⁽²⁾		Air	
Indication precision		±3% F.S. (Full span)	
Material	Case (Surface treatment)	Aluminum die-casted (Black disulfide molybdenum coat treated)	Rolled steel (Black melamine painted)
	Clear cover	Polycarbonate (Part no.: G36-00-00-3)	
	Stud (Surface treatment)	Aluminum die-casted (Black disulfide molybdenum coat treated)	Brass
	Bourdon tube	Brass	
Weight (kg)		0.04	0.05
Applicable model		AC2000/2500/3000 AR2000/2500/3000 AW2000/3000	—

Note 1) When installing a pressure gauge, be careful not to fasten too tight. Excessive tightening will result in damage. Use a pipe tape for sealing. Recommended tightening torque is R 1/8: Set between 7 and 9 N·m.

Note 2) Not applicable to water as fluid because its stud is made from aluminum die-casted. Water may cause corrosion and block the air passage. Use a pressure gauge with wetted parts made from stainless steel, G46-□-X3. (Note: Take care when using G36-□-01M, whose wetted part is made from brass. Some corrosion may result.) Design system to not be affected by water hammer when using water as fluid. Similarly, when using other fluids, please consult with SMC, to prevent corrosion-related problems.

Model (Standard)

Model	Pressure range ^{Note)}	Indication unit	Connection thread	Note
	MPa			
G36-2-01	0 to 0.2	MPa	R 1/8	—
G36-4-01	0 to 0.4			
G36-7-01	0 to 0.7			
G36-10-01	0 to 1.0			
GA36-10-01	0 to 1.0			

Note) Do not apply pressure more than the maximum display pressure. This will cause a malfunction.

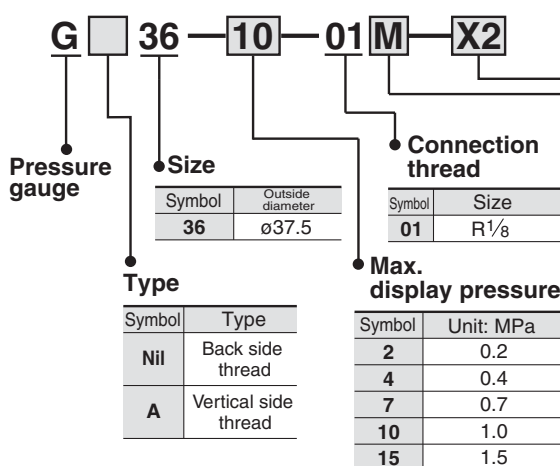
Model (Made to Order)

Other versions of this unit can be made on a made-to-order basis. Please consult with SMC for details, as delivery times may be extended.

Model	Pressure range ^{Note)}	Indication unit	Connection thread	Note
	MPa			
G36-10-01-X2	0 to 1.0	MPa	R 1/8	Plated stem (Ni)
G36-15-01	0 to 1.5			—

Note) Do not apply pressure more than the maximum display pressure. This will cause a malfunction.

How to Order



Option

Symbol	Specifications
Nil	—
X2	Nickel plated
X4	Oil-free (Wetted parts degrease washing)

Note 1) X3 (wetted parts SUS) specifications is not available.

Note 2) Cover ring assembly is not available.

Note 3) Part number for pressure gauge with MPa-psi units is G□36-P**-X30. This will no longer be sold for use in Japan after the new Weight and Measure Act has been implemented (October, 1999).

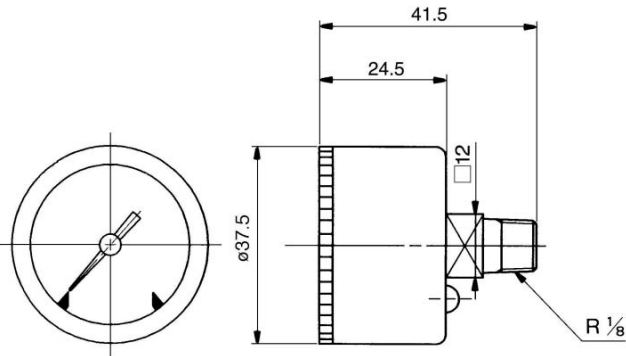
Option

Symbol	Specifications
Nil	—
M	M5 (Female thread)

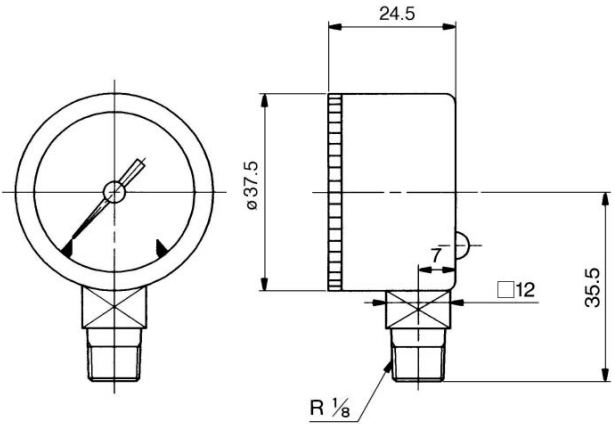
Note) Use M5 female thread when piping onto a panel.

Dimensions

G36



GA36



F.R.L.

AV

AU

AF

AR

IR

VEX

AMR

ITV

IC

VBA

VE□

VY1

G

PPA

AL