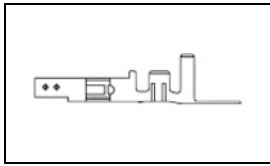


## 1586841-3 Product Details

[Share](#) [Print](#) [Email](#)


**1586841-3**

TE Internal Number: 1586841-3

 **Active**

### VAL-U-LOK Series Connector System

 Always EU RoHS/ELV Compliant (Statement of Compliance)

#### Product Highlights:

- Wire-to-Board, Wire-to-Board / Wire-to-Wire, Wire-to-Wire
- Applies To Wire/Cable
- Contact
- Glow Wire Rating = Standard Part - Not Glow Wire
- Contact Type = Socket

[View all Features](#)

### Quick Links

- ▶ [Pricing & Availability](#)
- ▶ [Search for Tooling](#)
- ▶ [Product Feature Selector](#)
- ▶ [Contact Us About This Product](#)

[Add to My Part List](#)

[Request Sample](#)

[Find Similar Products](#)

[Buy Product](#)

### Documentation & Additional Information

#### Product Drawings:

- [TERMINAL VAL-U-LOK\(TM\) SOCKET \(LOOSE PIECE\)](#) (PDF, English)

#### Catalog Pages/Data Sheets:

- [SOFT\\_SHELL\\_PIN\\_AND\\_SOCKET\\_CONNECTORS\\_CATALOG](#) (PDF, English)

#### Product Specifications:

- [VAL-U-LOK Connectors](#) (PDF, English)

#### Application Specifications:

- [VAL-U-LOK Series Headers and Connectors](#) (PDF, English)

#### Instruction Sheets:

- None Available

#### CAD Files:

- None Available

#### Related Products:

- [Tooling](#)

[List all Documents](#)

### Product Features (Please use the Product Drawing for all design activity)

#### Product Type Features:

- Product Type = Contact
- Termination Method to Wire/Cable = Crimp
- Strain Relief = With
- UL File Number = E28476
- CSA File Number = 208567

#### Electrical Characteristics:

- Contact Current Rating, Max. (A) = 9
- Operating Voltage Reference = AC
- Operating Voltage (VAC) = 600

#### Termination Features:

- Wire/Cable Size (AWG) = 16
- Wire/Cable Size (mm<sup>2</sup>) = 1.25 - 1.4

#### Dimensions:

- Length (X-Axis) (mm [in]) = 14.55 [0.573]

#### Body Features:

- Strain Relief Type = Insulation Crimp

#### Contact Features:

- Contact Type = Socket
- Contact Base Material = Phosphor Bronze
- Contact Plating, Mating Area, Material = Gold
- Contact Plating, Mating Area, Thickness (µm [µin]) = 0.76 [29.92]
- Contact Design = Single Beam

#### Industry Standards:

- [RoHS/ELV Compliance](#) = RoHS compliant, ELV compliant
- [Lead Free Solder Processes](#) = Not relevant for lead free process
- RoHS/ELV Compliance History = Always was RoHS compliant
- Agency/Standard = UL, CSA
- UL Rating = Recognized

#### Environmental:

- Operating Temperature (°C [°F]) = -40 - +105 [-40 - +221]

#### Conditions for Usage:

- Applies To = Wire/Cable
- Glow Wire Rating = Standard Part - Not Glow Wire

#### Operation/Application:

- Application Use = Wire-to-Board, Wire-to-Board / Wire-to-Wire, Wire-to-Wire
- Contact Transmits (Typical Application) = Signal (Data)

#### Packaging Features:

- Packaging Method = Loose Piece/Bulk

#### Other:

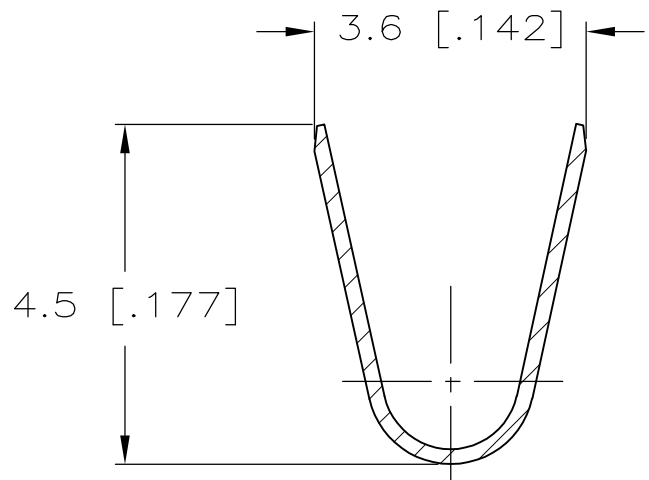
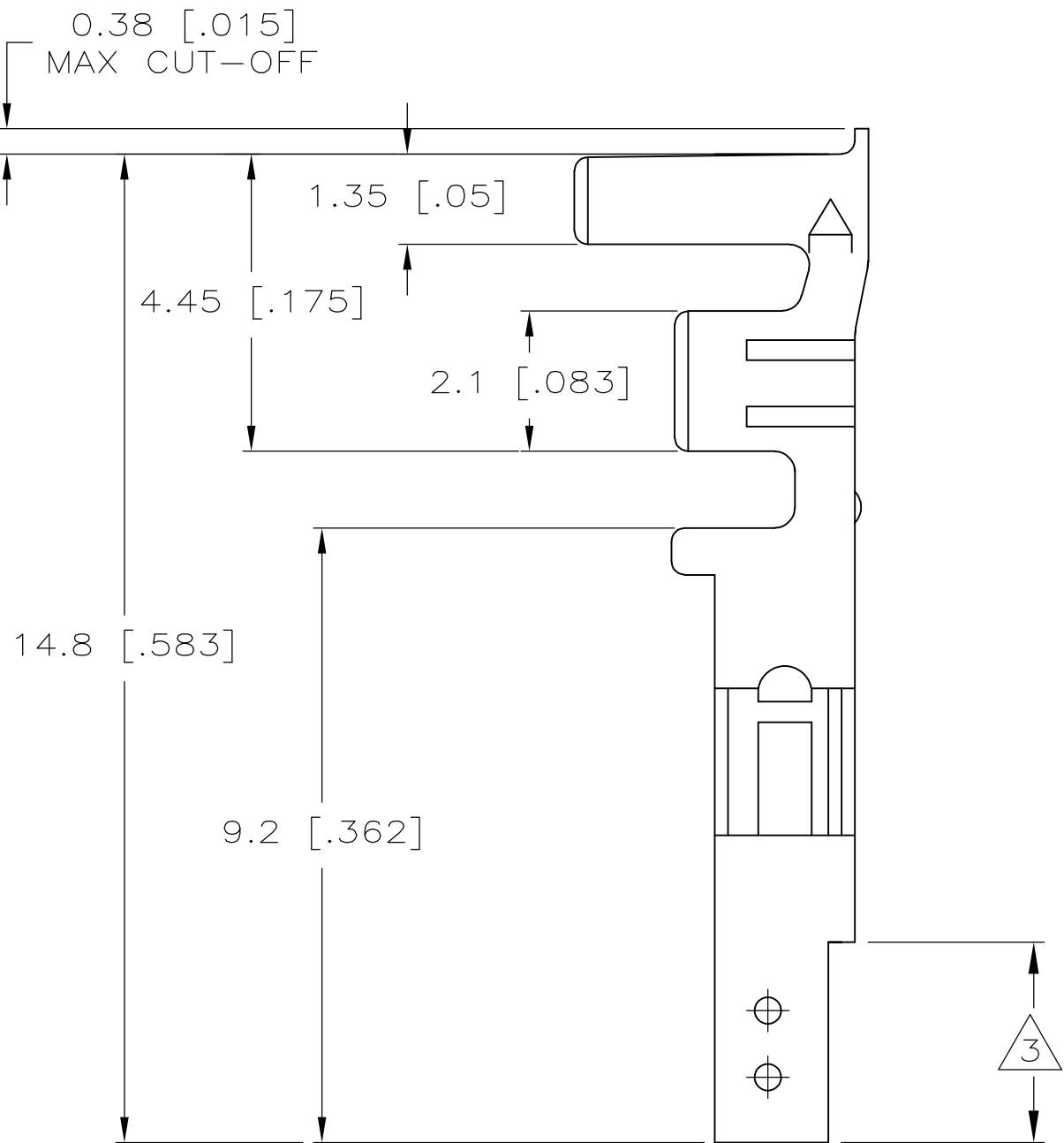
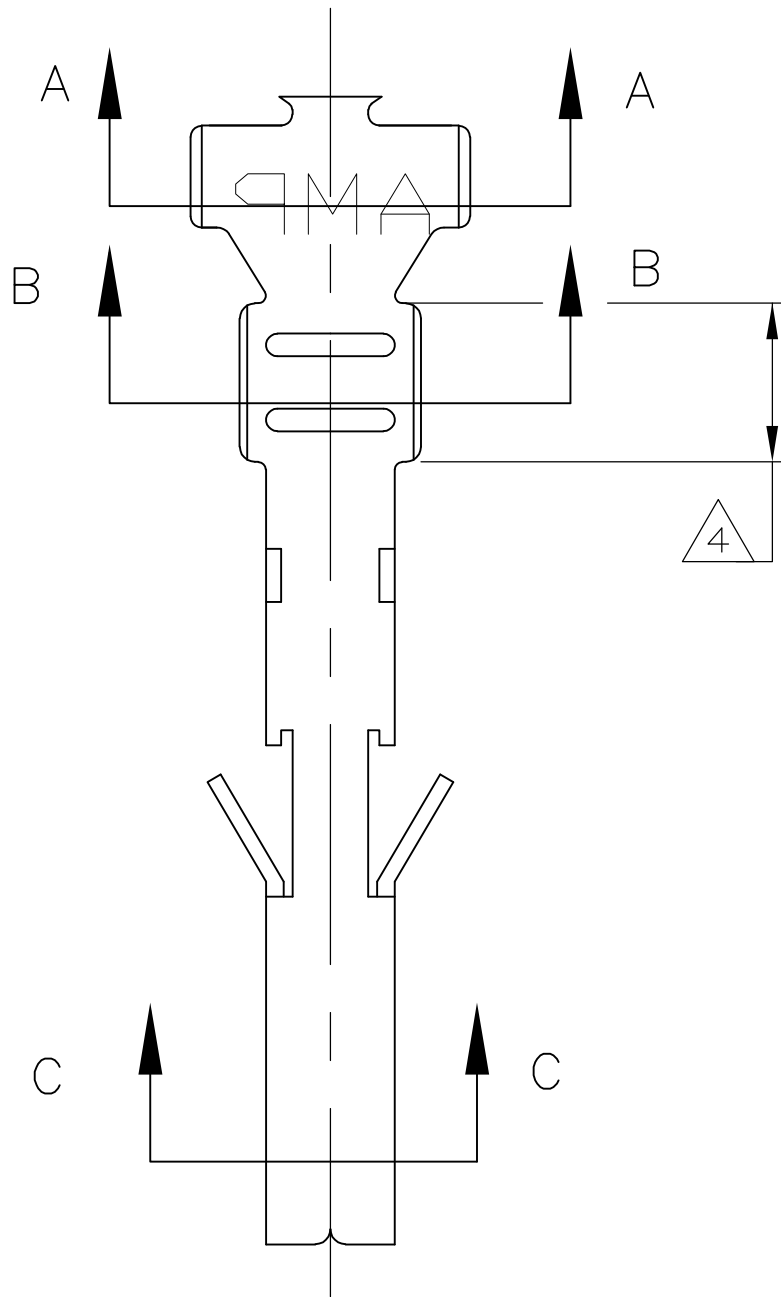
- Brand = TE Connectivity

LOC	DIST	REVISIONS					
		P	LTR	DESCRIPTION	DATE	DWN	APVD
—	—		B1	REVISED PER ECO-08-027061	05NOV08	HMR	CC

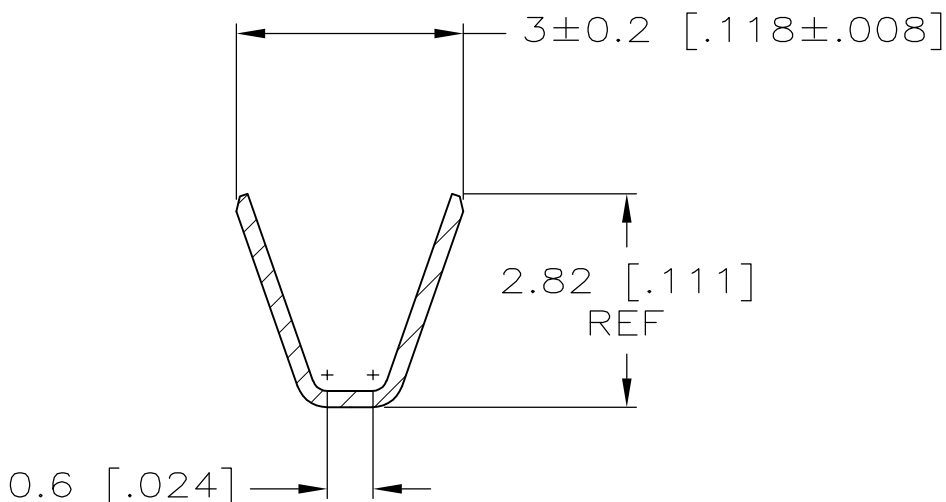
1. WIRE RANGE: 1.31mm<sup>2</sup> (16 AWG).
2. INSULATION RANGE 3.10 [.122] MAXIMUM DIAMETER

△3 FINISH: 0.76μm MINIMUM GOLD OVER 1.27μm MINIMUM NICKEL REQUIRED ON INNER SURFACE, PERMITTED ON OUTER SURFACE.

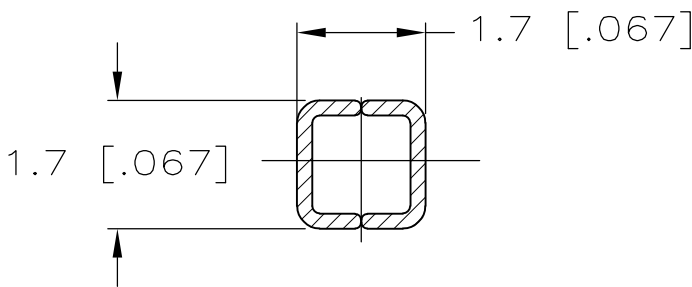
△4 FINISH: 2.54μm MINIMUM TIN ON ALL SURFACES IN THIS AREA.



SECTION A-A




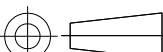
SECTION B-B



SECTION C-C

METRIC

GOLD △3△4	PHOS. BRZ.	1586841-4
PRE-TIN	PHOS. BRZ.	1586841-3
GOLD △3△4	BRASS	1586841-2
PRE-TIN	BRASS	1586841-1
FINISH:	MATERIAL:	PART NO.

THIS DRAWING IS A CONTROLLED DOCUMENT.		DWN K. WHITAKER 04APR2007	 Tyco Electronics Corporation Harrisburg, PA 17105-3608			
		CHK C. CASH 04APR2007				
DIMENSIONS: mm [INCHES]		APVD C. CASH 04APR2007	NAME			
		PRODUCT SPEC	TERMINAL VAL-U-LOK(TM) SOCKET (LOOSE PIECE)			
		APPLICATION SPEC				
MATERIAL	TOLERANCES UNLESS OTHERWISE SPECIFIED: 0 PLC ± 0.2 [.01] 1 PLC ± 0.13 [.005] 2 PLC ± 0.13 [.005] 3 PLC ± 0.254 [.0100] 4 PLC ± 0.254 [.0100] ANGLES ±	WEIGHT	SIZE A2	CAGE CODE 00779	DRAWING NO C=1586841	RESTRICTED TO —
		CUSTOMER DRAWING		SCALE 10:1	SHEET 1 of 1	REV B1