

DO NOT
SCALE FROM
THIS PRINT

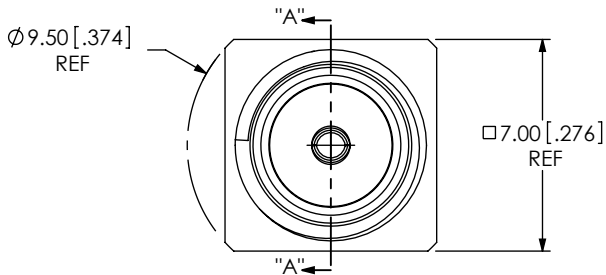


TABLE 1		
ITEM	COMPONENT	-H
1	SHELL	SMA-J-P-F-ST-TH1-SHL
2	RING	SMA-J-P-F-ST-TH1-RNG
3	INSULATOR	SMA-J-P-TH1-INS
4	SOCKET	SMA-SKT-005-H

DESIGNED & DIMENSIONED
IN MILLIMETERS[INCHES]

SMA-J-P-X-ST-TH1

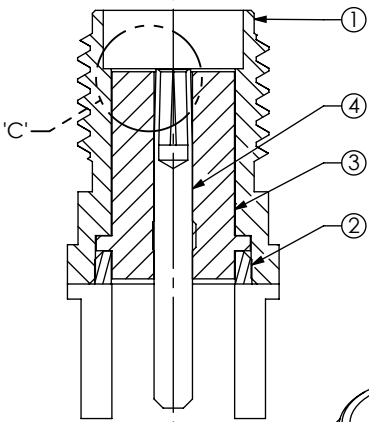
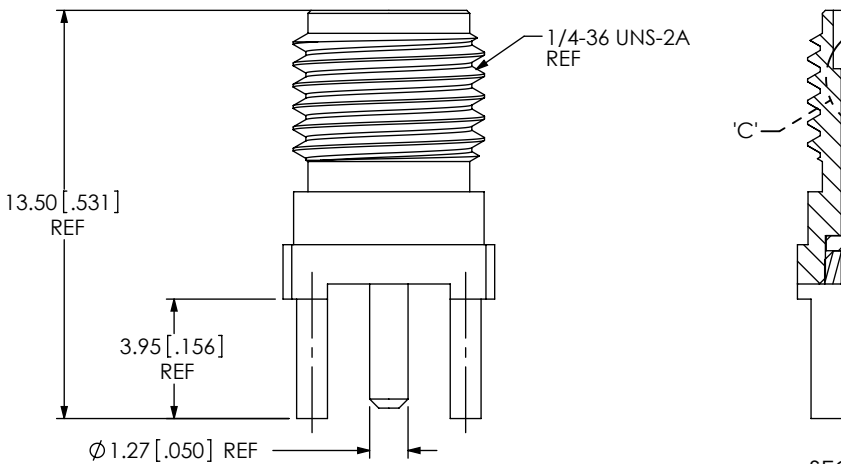
GENDER
-J: JACK

TYPE
-P: PCB

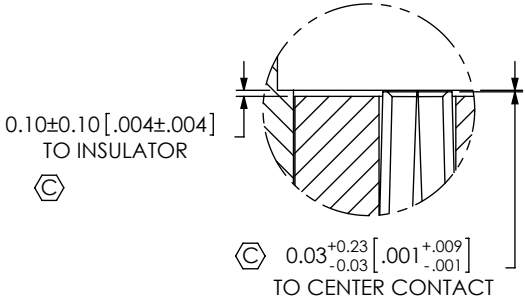
TERMINATION
-TH1: THROUGH HOLE

ORIENTATION
-ST: STRAIGHT

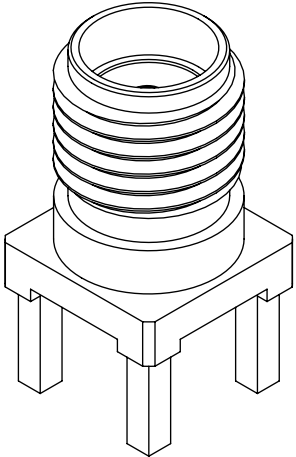
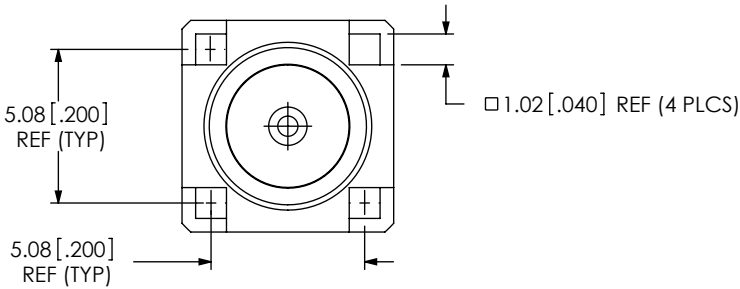
PLATING SPECIFICATION
-H: 30µ" GOLD CENTER CONTACT,
3µ" GOLD OUTER CONTACT
(SEE TABLE 1)



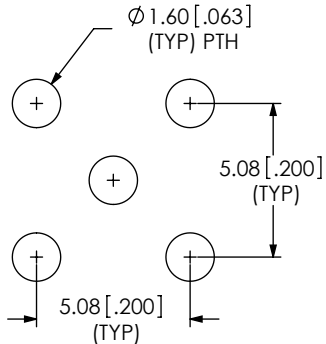
SECTION "A"-A"



DETAIL 'C'
SCALE 8:1



RECOMMENDED PCB LAYOUT



NOTES:

- 1. Ⓢ REPRESENTS A CRITICAL DIMENSION.
- 2. MINIMUM PUSHOUT FORCE FOR INSULATOR: 44.48 N[10 LB].
- 3. MINIMUM CENTER CONTACT PUSHOUT FORCE: 13.35 N [3 LBS].
- 4. PRODUCT TO BE PACKAGED PER PACKAGING STANDARD CO-RF-WI-3040-M.
- 5. NOTE DELETED.
- 6. NOTE DELETED.
- 7. NOTE DELETED.

UNLESS OTHERWISE SPECIFIED, DIMENSIONS ARE IN MILLIMETERS INCHES. TOLERANCES ARE: DECIMALS ANGLES .X: ±0.3 [.01] 5° .XX: ±0.13 [.005] .XXX: ±0.051 [.0020]	PROPRIETARY NOTE THIS DOCUMENT CONTAINS INFORMATION CONFIDENTIAL AND PROPRIETARY TO SAMTEC, INC. AND SHALL NOT BE REPRODUCED OR TRANSFERRED TO OTHER DOCUMENTS OR DISCLOSED TO OTHERS OR USED FOR ANY PURPOSE OTHER THAN THAT WHICH IT WAS OBTAINED WITHOUT THE EXPRESSED WRITTEN CONSENT OF SAMTEC, INC.	 520 PARK EAST BLVD., NEW ALBANY, IN 47150 PHONE: 812-944-6733 FAX: 812-948-5047 e-Mail: info@SAMTEC.com code: 55322
MATERIAL: DO NOT SCALE DRAWING SHEET SCALE: 4:1 SHELL, RING: BRASS SOCKET: COPPER ALLOY DIELECTRIC: PTFE	DESCRIPTION: SMA STRAIGHT, THROUGH HOLE JACK- 50 OHM DWG. NO. SMA-J-P-X-ST-TH1 BY: R MUSSER 01/28/2008 SHEET 1 OF 1	