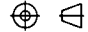


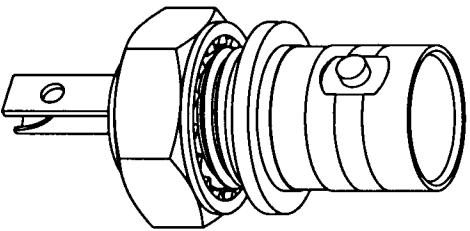
NOTES:

1. MATERIALS OF CONSTRUCTION:
BODY & HEX NUT = BRASS (QQ-B-626), NICKEL PLATED
LOCKWASHER & LOCK RING = BRASS (QQ-B-613), NICKEL PLATED
BRAID GROUNDING = BRASS (QQ-B-613), BRIGHT TIN PLATED
CONTACT PIN = PHOSPHOR BRONZE, GOLD PLATED
INSULATOR = NYLON, COLOR WHITE

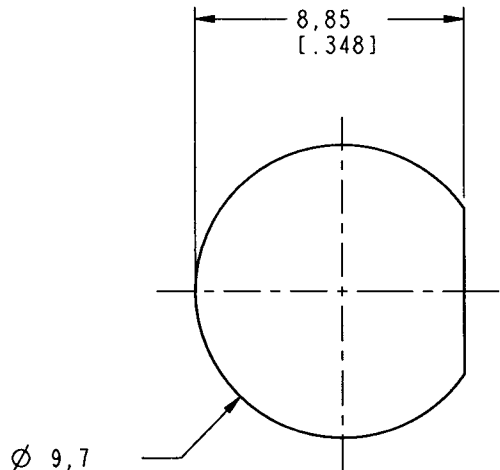
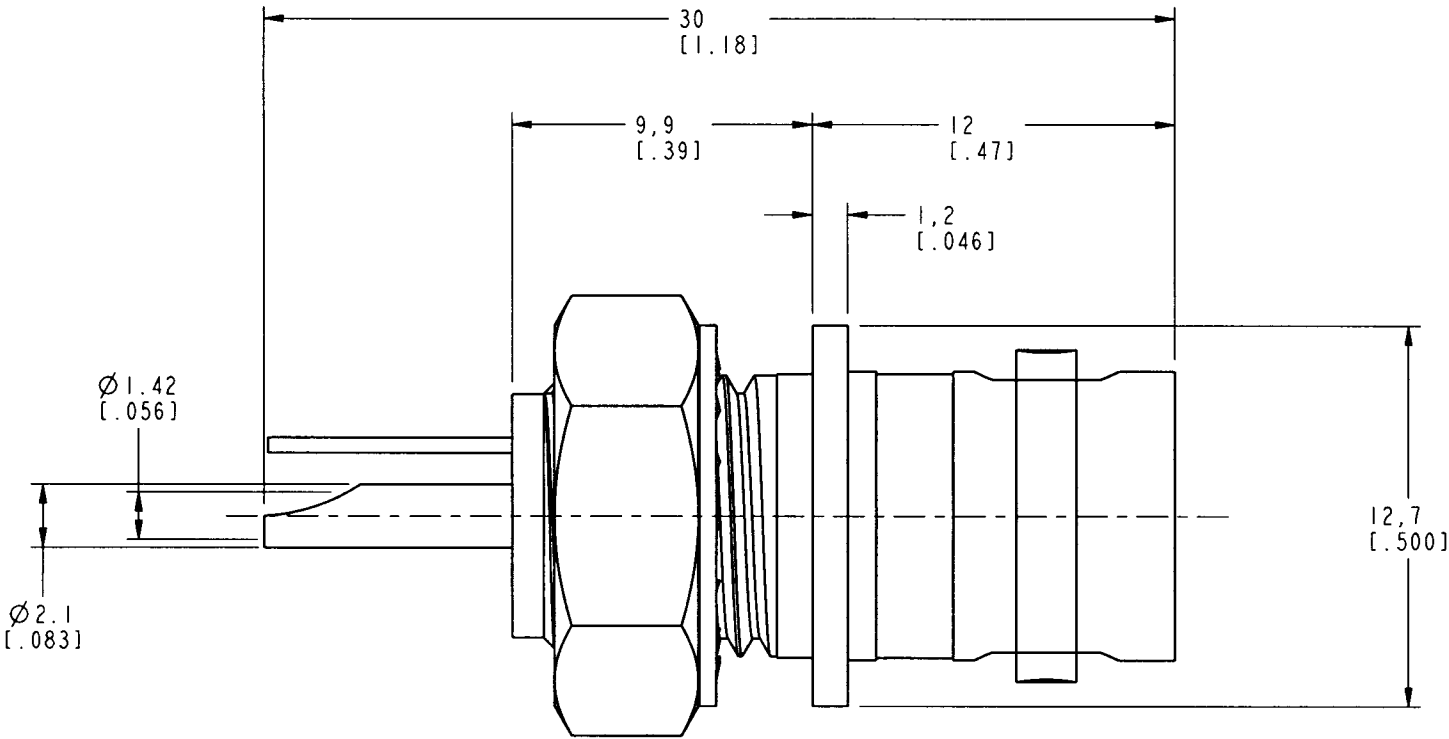
31-10-RFXG1

REVISIONS

DRAWING NO.	REV	DESCRIPTION	DATE	ECO	APPR
THIRD ANGLE PROJ. 	A	RELEASE TO MFG.	4/13/00	43300	CPM

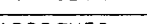


SCALE 2.000



RECOMMENDED MOUNTING
HOLE DIMENSIONS
SCALE 4.000

CUSTOMER OUTLINE DRAWING
FOR REFERENCE ONLY

UNLESS OTHERWISE SPECIFIED, DIMENSIONS ARE IN INCHES AND TOLERANCES ARE: 0.5 - 6mm ±0.2mm	MATERIAL	DRAWN	DATE	TITLE			Amphenol Amphenol Corporation Communication and Network Products Division Danbury, CT U.S.A. 06810		
		C. McGRATH	28-Mar-00						
		ENGINEER	DATE	BNC BULKHEAD RECEPTACLE ISOLATED JACK					
		T. AUBIN	28-Mar-00						
NOTICE - These drawings, specifications, or other data (1) are, and remain the property of Amphenol Corp. (2) must be returned upon request; and (3) are confidential and not to be disclosed to any person other than those to whom they are given by Amphenol Corp. The furnishing of these drawings, specifications, or other data by Amphenol Corp., or to any other person to anyone for any purpose is not to be regarded by implication or otherwise in any manner licensing, granting rights or permitting such holder or any other person to manufacture, use or sell any product, process or design, patented or otherwise, that may in any way be related to or disclosed by said drawings, specifications, or other data.	REFERENCE	APPROVED	DATE	SCALE: 4.0:1			SHEET 2 OF 2		
	EAR 967485-0 GEN# ASSYF14_BNC		4/12/00	CODE ID			DWG SIZE	DRAWING NO.	REV
		CAD FILE	I:\BNC\31-10-RFXG1			74868	B	31-10-RFXG1	A