

**Ordering number FA12038\_TINA-RS**

Family	Tina	FWHM	16 degrees
Type	Assembly	Efficiency	91 %
LED	LUXEON A	cd/Im	-
Color	White	Gerber File	Available
Diameter	16.1 mm		
Height	9.4 mm		
Style	Round		
Optic Material	PMMA		
Holder Material	PC		
Fastening	Pin, tape		
Status	Ready		

**Ordering number FA12040\_TINA-M**

Family	Tina	FWHM	32 degrees
Type	Assembly	Efficiency	89 %
LED	LUXEON A	cd/Im	-
Color	White	Gerber File	Available
Diameter	16.1 mm		
Height	9.4 mm		
Style	Round		
Optic Material	PMMA		
Holder Material	PC		
Fastening	Pin, tape		
Status	Ready		

**NOTE: The typical divergence will be changed by different color, chip size and chip position tolerance. The typical total divergence is the full angle measured where the luminous intensity is half of the peak value.**



## PRODUCT DATASHEET

### Tina series

last update 15/11/2012

PHILIPS  
LUMILEDS

#### GENERAL INFORMATION

- Product series especially designed & optimized for LUXEON A series of LEDs.
- Special care taken to make light distribution as uniform as possible.
- Lens material optical grade PMMA with high UV and temperature resistance. Allows use of high current and temperature conditions.

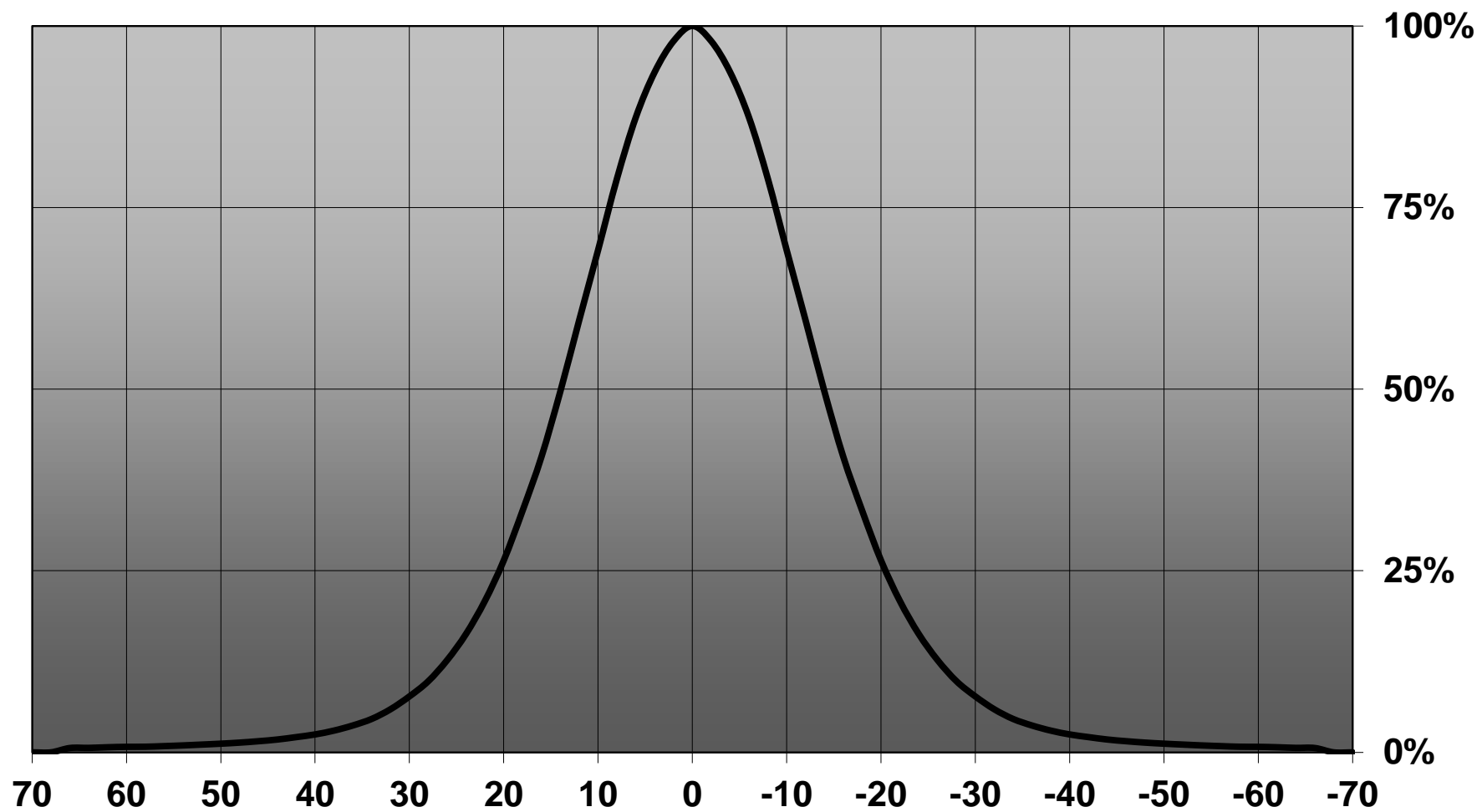
Please find more information about used material from below:

[http://ledil.fi/sites/default/files/Documents/Technical/Material/PMMA%20N%20UL94\\_Yellow%20Card.pdf](http://ledil.fi/sites/default/files/Documents/Technical/Material/PMMA%20N%20UL94_Yellow%20Card.pdf)

<http://ledil.fi/sites/default/files/Documents/Technical/Material/PMMA%20N%20PLEXIGLAS-Datasheet.pdf>

- Optic holder molded by high quality PC material (120 degrees of Celcius / 248 degrees of Fahrenheit).

**Relative intensity of Tina-RE-ES-M**



4

3

2

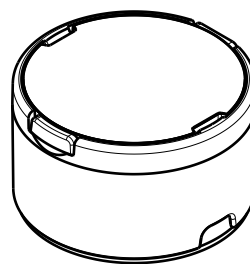
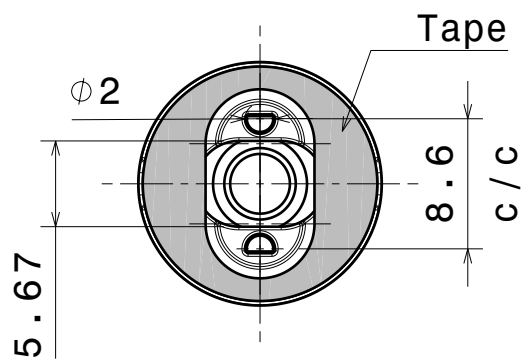
1

D

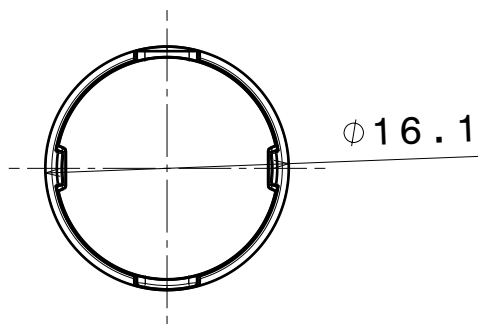
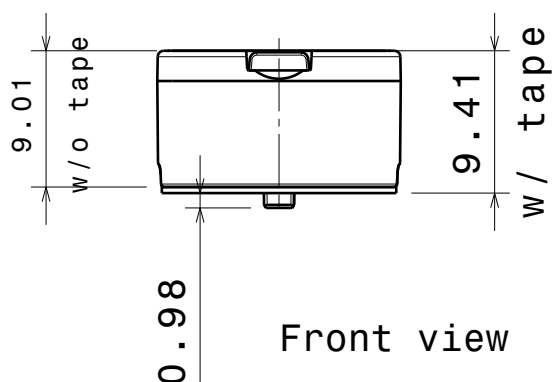
C

B

A



Isometric view



Materials  
Lens: PMMA  
Holder: PC  
Tape: PU Foam

This drawing is our property.  
It can't be reproduced  
or communicated without  
our written agreement.

**LEDiL**

Ledil Oy  
Salorankatu 10  
FIN 24240 SALO  
Finland

DRAWING TITLE

Mechanical Drawing

DRAWN BY

DATE

as

10.9.2012

TINA-RE

CHECKED BY

DATE

sn

-

SIZE

PART NUMBER

REV

A4

TINA-RE

001

DESIGNED BY

DATE

-

-

SCALE

2:1

WEIGHT

1,46 g

SHEET

1/1

D

A

4

3

2

1