

**Ordering number** FP11076_LISA2-W-CLIP

Family	Lisa2	FWHM	48 degrees
Type	Assembly	Efficiency	93 %
LED	LUXEON A	cd/Im	-
Color	Black	Gerber File	Available
Diameter	9.9 mm		
Height	6.8 mm		
Style	Round		
Optic Material	PMMA		
Holder Material	PC		
Fastening	Clips, glue		
Status	Ready		

NOTE: The typical divergence will be changed by different color, chip size and chip position tolerance. The typical total divergence is the full angle measured where the luminous intensity is half of the peak value.



PRODUCT DATASHEET

Lisa2 series

last update 3/5/2012

PHILIPS
LUMILEDS

GENERAL INFORMATION

- Product series especially designed & optimized for LUXEON A series of LEDs.
- Special care taken to make light distribution as uniform as possible.
- Lens material optical grade PMMA with high UV and temperature resistance. Allows use of high current and temperature conditions.

Please find more information about used material from below:

http://ledil.fi/sites/default/files/Documents/Technical/Material/PMMA%20N%20UL94_Yellow%20Card.pdf

<http://ledil.fi/sites/default/files/Documents/Technical/Material/PMMA%20N%20PLEXIGLAS-Datasheet.pdf>

- Optic holder molded by high quality PC material (120 degrees of Celcius / 248 degrees of Fahrenheit).

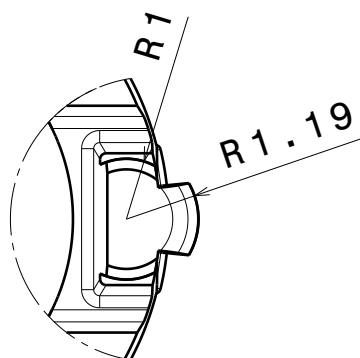
D C B A

4

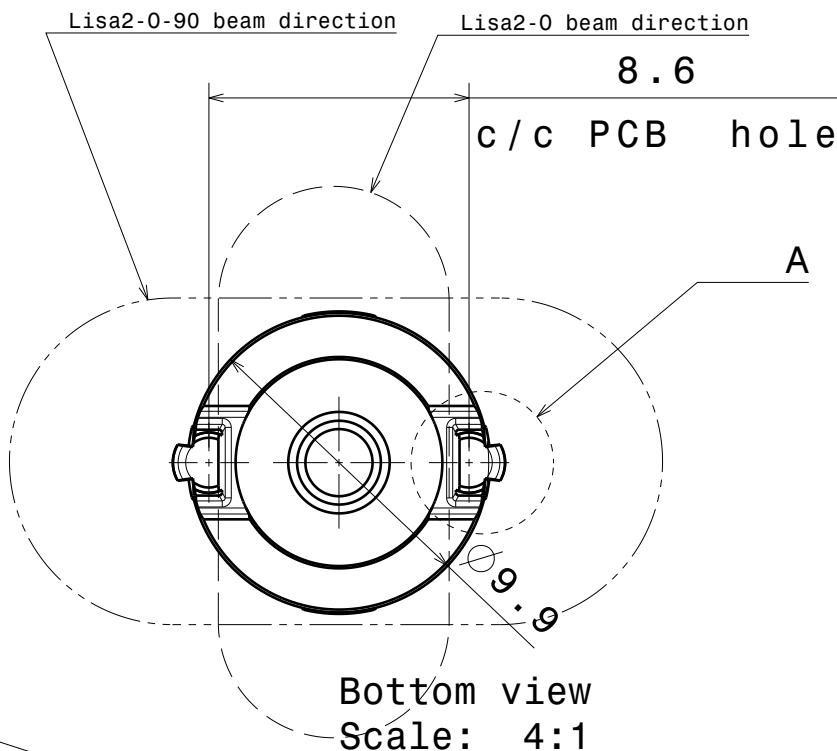
3

2

1



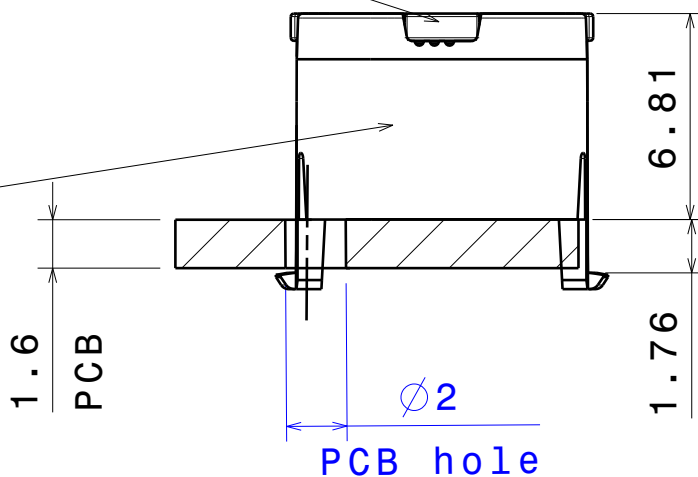
Detail A
Scale: 8:1



Lens

Bottom view
Scale: 4:1

Holder



Front view
Scale: 4:1

Materials:
Lens PMMA
Holder PC

This drawing is our property.
It can't be reproduced
or communicated without
our written agreement.



L
T
F
F

e
e
l
i
n

d
h

DRAWING TITLE

Datasheet Lisa2-clip16-XP series Assy

DRAWN BY

a

DATE

20.7.2011

CHECKED BY

s n

DATE

20.7.2011

DESIGNED BY

hh

DATE

19.10.2009

SIZE

A4

DRAWING NUMBER

REV

2

SCALE

4:1

WEIGHT (g)

SHEET

1/1

D

A

4

3

2

1