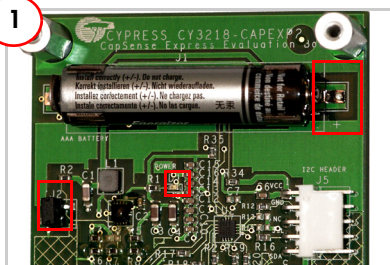


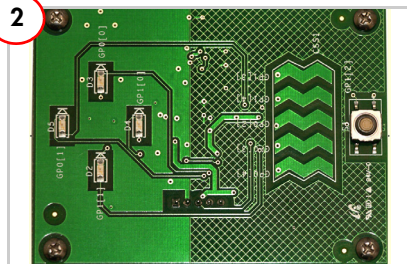
CY3218-CAEXP2 CAPSENSE® EXPRESS™ EVALUATION KIT QUICK START GUIDE

1



1. Insert the AAA battery.
2. Remove the jumper from J2.
3. Observe that the Power LED lights up.

2



1. Observe that the status LED D5 flashes.
2. Slide the finger over the CapSense slider to light up the respective LED.

3



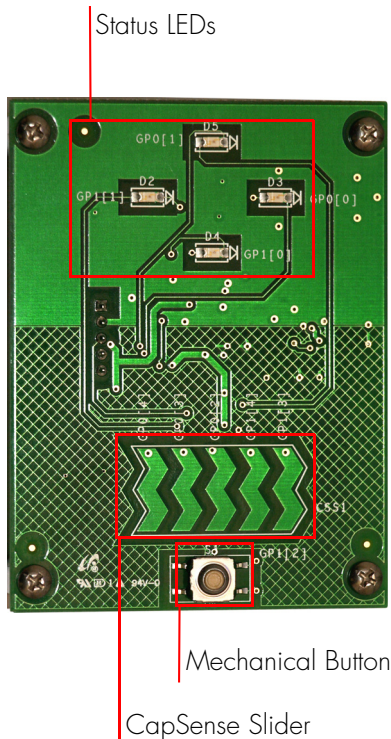
Insert the kit CD and run the CD's autorun utility.

4

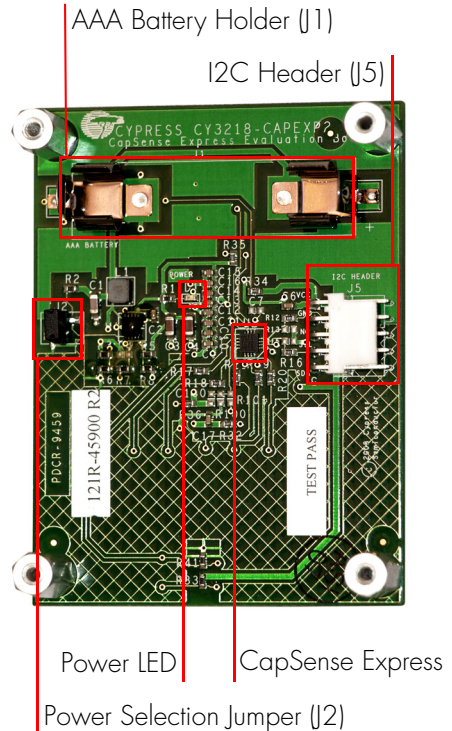


Open the guide and install PSoC Programmer and PSoC Designer.

Top View



Bottom View



For the latest information about this kit, visit
<http://www.cypress.com/go/CY3218-CAEXP2>

