

Dialight

SafeSite® Series
White Downlight

Catalog 2008



HAZARDOUS LOCATION SAFESITE® SERIES LED WHITE DOWNLIGHT

HZC-02-150-1111-201 (180° beam)

HZC-02-150-1111-301 (360° beam)



Certified To:

UL 844 / Nema 4x / UL1598 / UL 1598A
CSA 22.2 NO. 137-M1981 / NO. 250.0-04

Suitable for wet locations

FEATURES / BENEFITS

- ▲ Class I , Div 2, Groups A, B, C, D hazardous environments T4A rated
- ▲ Class II , Div 2, Groups F, G hazardous environments T4A rated
- ▲ Low power consumption
- ▲ Universal input supply (120 - 277 VAC)
- ▲ Patent pending optical design
- ▲ State of the art solid state lighting source
- ▲ Self-contained wiring compartment eliminates additional junction boxes
- ▲ Weather/corrosion resistant lamp assembly and housing
- ▲ 5 year warranty
- ▲ Resistant to shock and vibration
- ▲ Instant on / off response
- ▲ Wide operating voltage range
- ▲ Power factor > .9
- ▲ THD < 20%
- ▲ IP66 rated

PATENTS PENDING

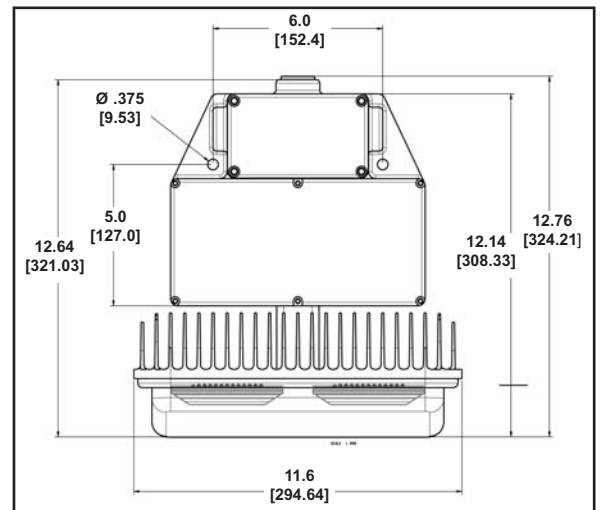


APPLICATION

Dialight introduces the new state of the art fixture for hazardous location lighting. Its rugged solid state design creates a new era where failed lamps and expensive relamping costs become a thing of the past. This light incorporates both cutting edge LED technology along with proprietary optics to achieve area lighting comparable with other traditional light sources. By focusing the light where it is needed, the SafeSite Series is the most efficient light source available for hazardous area lighting applications. Whether your application is in a refinery, oil platform, chemical plant or any other Class I, Division 2 or Class II, Division 2 application, this fixture offers improved performance across the board.

SPECIFICATIONS

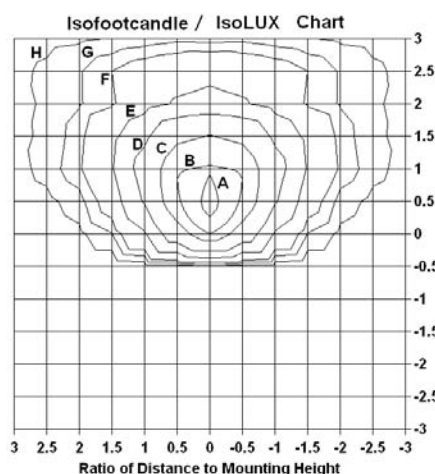
- ▲ **Operating Voltage** : 120 - 277 (50 / 60 hz)
- ▲ **Power Consumption** : @ 120 VAC = 100 VA
- ▲ **Lightsource** : LEDs > 10+ year life expectancy
- ▲ **Operating / Storage Temperature** : -40° to +55°C
- ▲ **Surge / Lighting Protection** : 1 kV line to line
2 kV line to ground
- ▲ **Rated Life** : 70% lumen maintenance over 60,000 operating hours
- ▲ **Harmonics** : IEC 6100-3-2



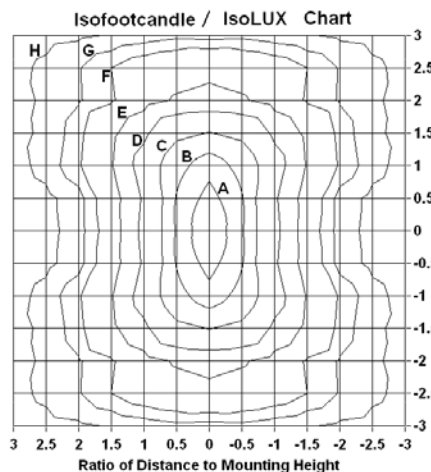
Dimensions in Inches [mm]

PHOTOMETRIC DATA

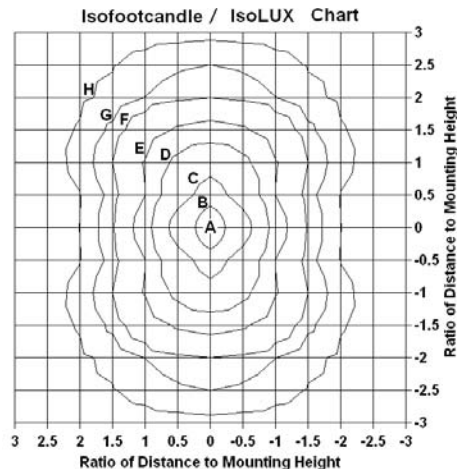
180 Degree Pattern



Back to Back 180 Degree Pattern



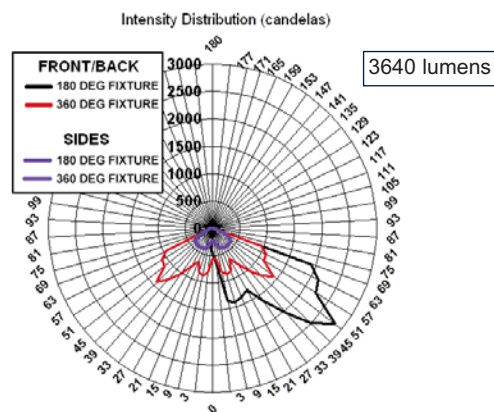
360 Degree Pattern



Each box is one mounting height.

Footcandle Values for Isofootcandle Lines

Mounting Height (ft)	Zones							
	A	B	C	D	E	F	G	H
4	60.00	40.00	32.00	20.00	12.00	6.00	4.00	2.00
8	15.00	10.00	8.00	5.00	3.00	1.50	1.00	0.50
12	6.67	4.44	3.56	2.22	1.33	0.67	0.44	0.22
16	3.75	2.50	2.00	1.25	0.75	0.38	0.25	0.13
20	2.40	1.60	1.28	0.80	0.48	0.24	0.16	0.08
25	1.54	1.02	0.82	0.51	0.31	0.15	0.10	0.05
30	1.07	0.71	0.57	0.36	0.21	0.11	0.07	0.04
35	0.78	0.52	0.42	0.26	0.16	0.08	0.05	0.03



ORDERING INFORMATION

Product	Description
HZC-02-150-1111-201	SafeSite 180 degree beam, 120-277 VAC (50/60hz), C1D2
HZC-02-150-1111-301	SafeSite 360 degree beam, 120-277 VAC (50/60hz), C1D2
HZC-3000	Stanchion Mount Bracket
HZC-3001	180° Adjustable Mount Bracket
HZC-3002	Dual Pendant Mount Bracket (For mounting 2 fixtures back to back)
HZC-3002-150	Dual Stanchion Mount Bracket (For mounting 2 fixtures back to back)
HZC-3003	Pipe Mount Clamp Kit (includes HZC-3001)

UNIT ELECTRICAL SPECIFICATIONS

Supply Voltage (+/- 10%) (50 or 60 Hz)		Input Volt-amps or power (VA or W)			Power Factor
Min	Max	Min	Nom	Max	Typ
120	277	85	100	115	0.98

SHIPPING WEIGHTS & MEASUREMENTS (EACH)

Approx. Shipping Weight (ea)	Shipping Outer Box Dimensions (ea)
19 Lbs (8.2 kg)	15" X 16" X 10" (381mm x 406mm x 254mm)

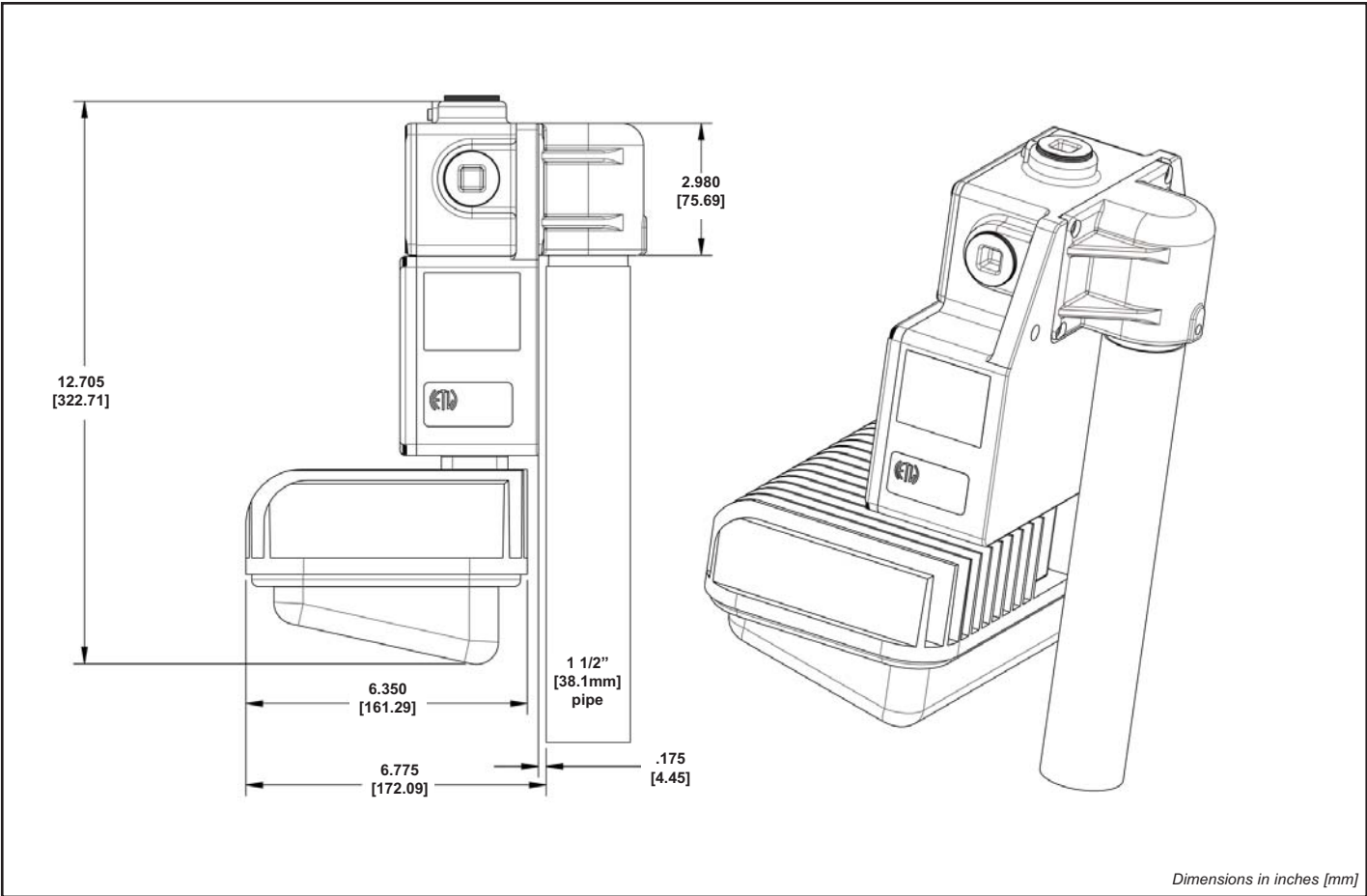
STANCHION MOUNT OPTION



Stanchion Mount Bracket
HZC-3000

Materials:

Anodized aluminum with stainless steel hardware.



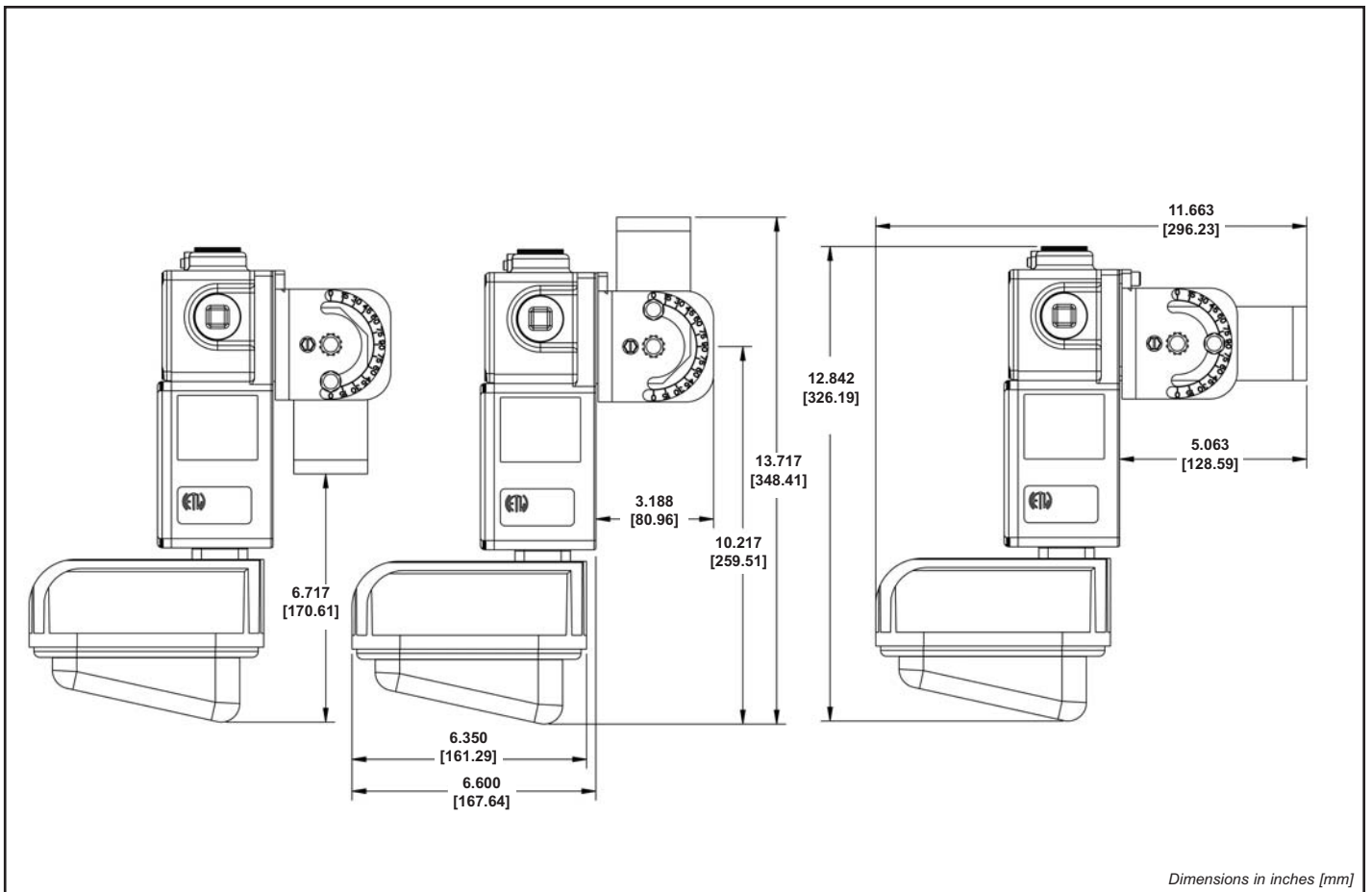
180° ADJUSTABLE SWING MOUNT OPTION



180° Adjustable Mount Bracket
HZC-3001

Materials:

Anodized aluminum with stainless steel hardware.



DUAL MOUNT OPTION

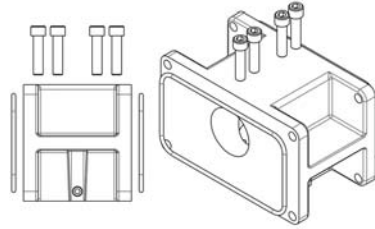
(For mounting 2 fixtures back to back)



Conduit Size 1.5" [38.1mm]

Kit Contains:

- (1) Dual mount
- (2) Set screws
- (4) 1/4-20 x 1" SS socket head screws
- (1) O-rings (not shown)



Dimensions in inches [mm]



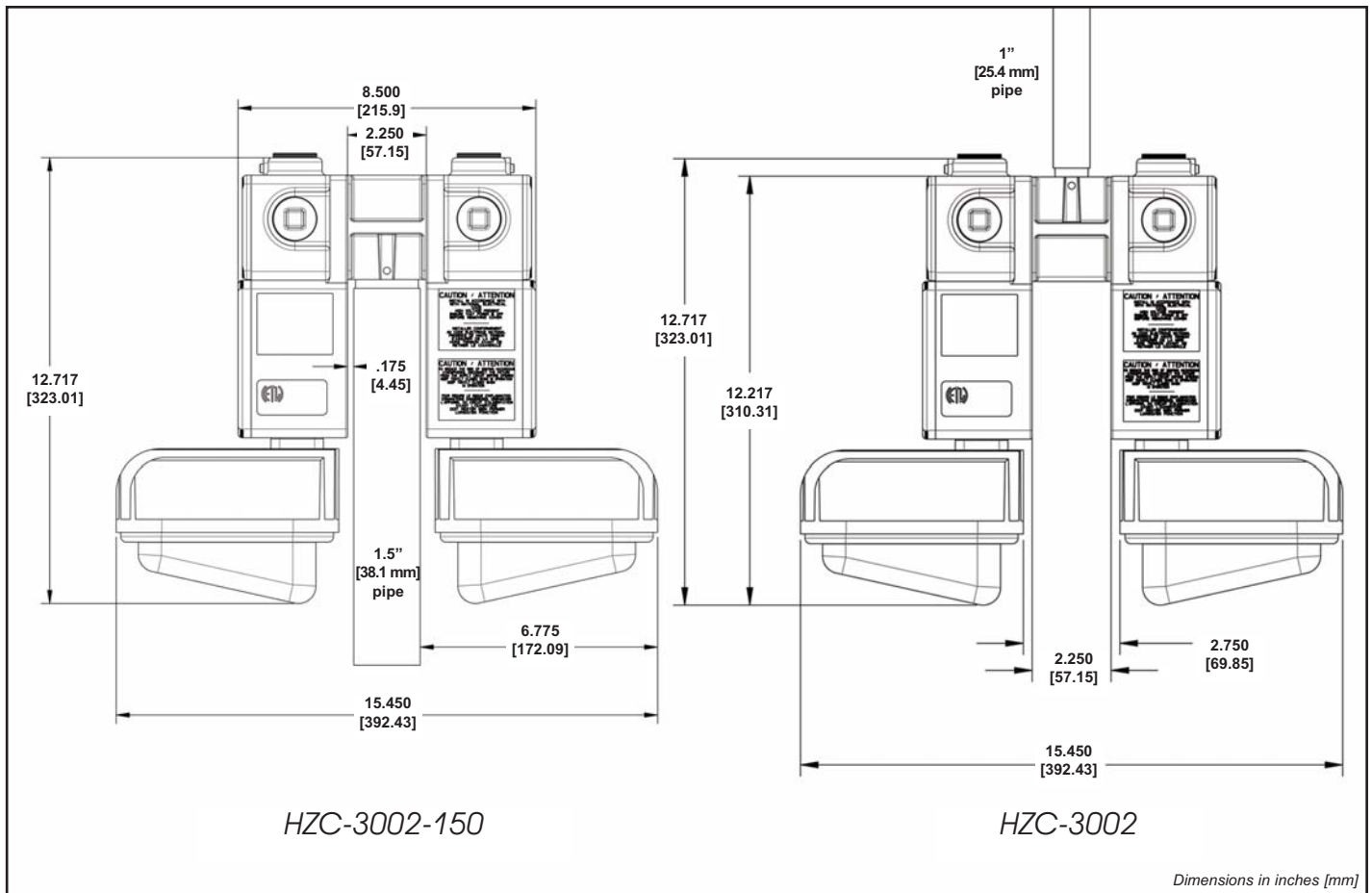
Conduit Size 1" [25.4mm]

**Dual Stanchion
Mount Bracket**
HZC-3002-150

**Dual Pendant
Mount Bracket**
HZC-3002

Materials:

Anodized aluminum with stainless steel hardware.

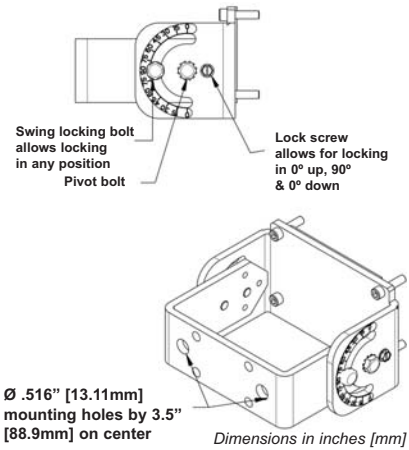
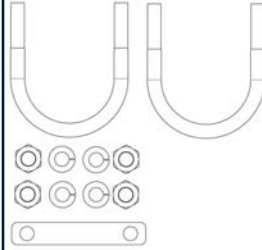


PIPE MOUNT CLAMP OPTION



Kit Contains:

- (2) 1.5" u-bolts (ss)
- (2) U-bolt backing plates (ss)
- (4) 5/16 hex nuts (ss)
- (4) Split ring lock washers (ss)
- (1) Swing bracket assembly
- (4) 1/4-20 x 1" SS socket head screws
- (1) O-ring (not shown)



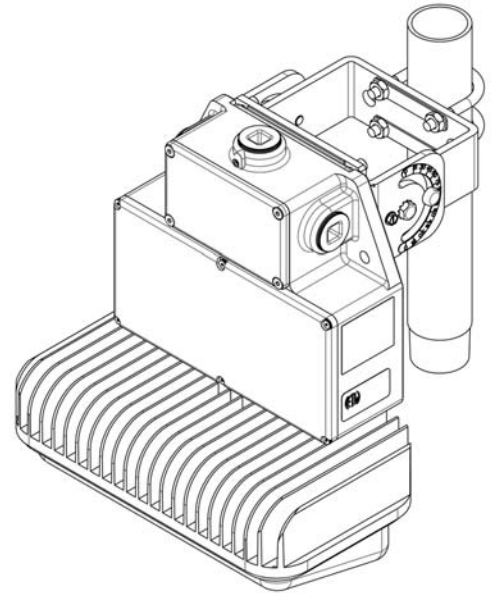
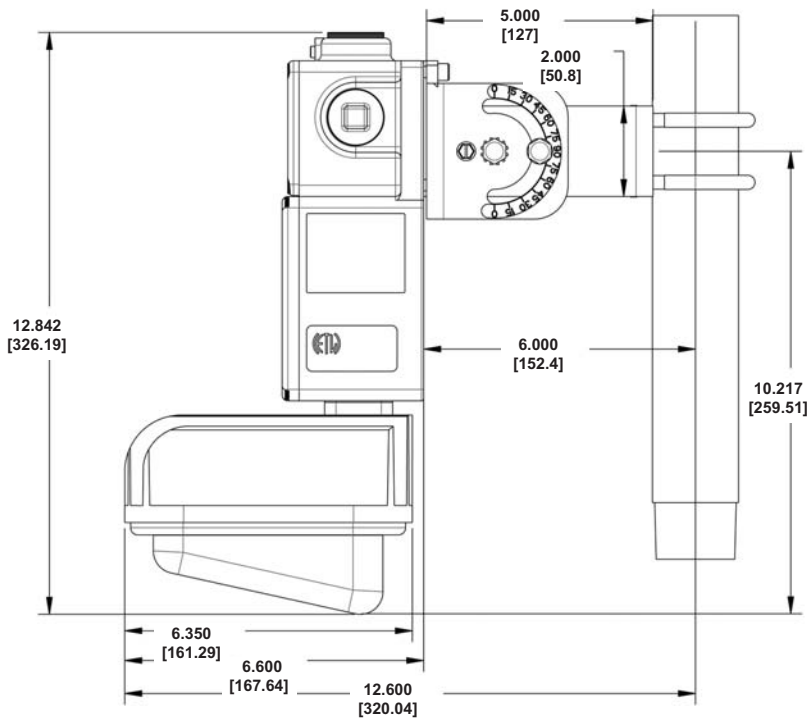
Pipe Mount Clamp Kit

HZC-3003

(Includes HZC-3001)

Materials:

Anodized aluminum with stainless steel hardware.



Dimensions in inches [mm]

Dialight

Also Available:

SafeSite® Series White Downlight



White Task Light



D164 Medium Intensity Beacon



860 Flashing Visual Signal



Dialight offers a full line of hazardous location lighting products

1501 Route 34 South
Farmingdale, NJ 07727

www.dialight.com

MDTFHWCACS001_B