

THA-412 Flush Lever Handle Latch



Characteristic

Rainproof type handle with two segment mechanism.

Specification

Usable for both left and right side by changing the position of the cam.
Turning 180° to the right makes the handle lock.

Application

Distribution boards /
Distribution panels /
Control boards

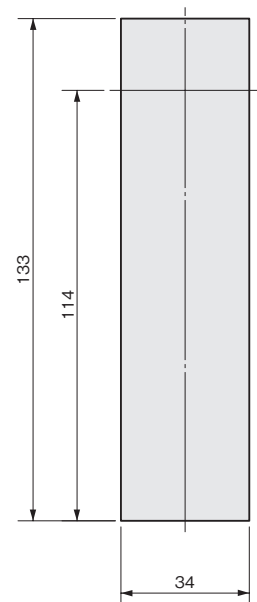
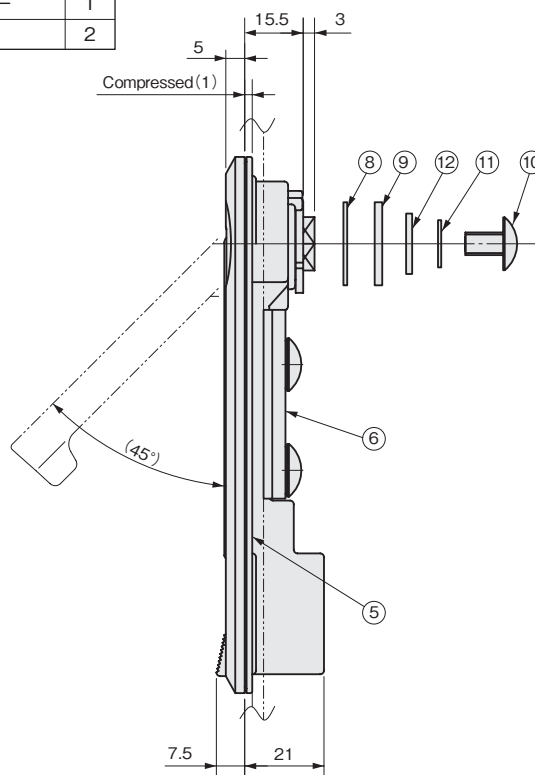
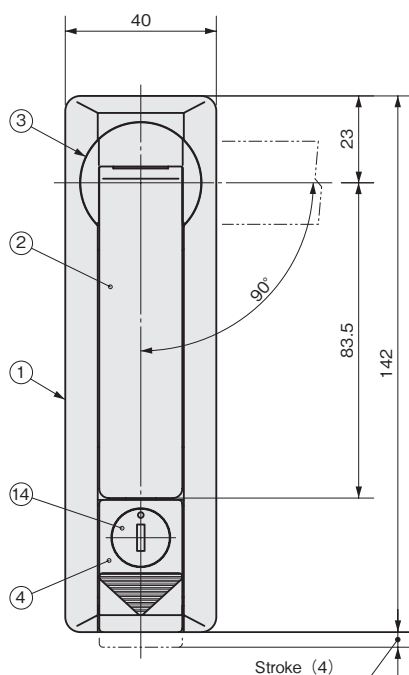
Specification

Model No.	Key No.	Applicable Plate Thickness	Net Weight(g)	Code No.
THA-412A-2K	No.2200	t2.0~t3.2	240	3383
THA-412A-2	Without Key		216	3384
THA-412B-2K	No.2200		240	3373

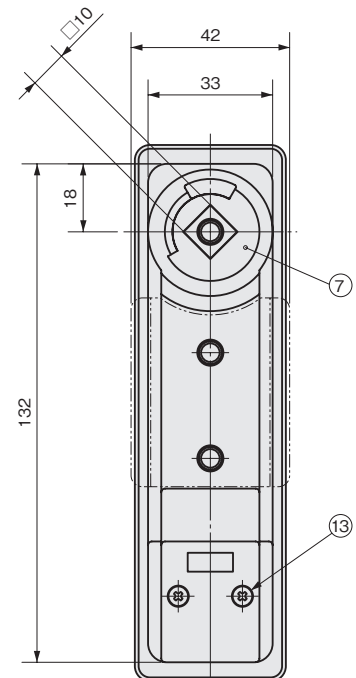
※Available with key No. 200

Parts List

No.	Part Name	Material	Finish		Quantity
			THA-412A	THA-412B	
1	Body	ADC	Cr (Satin Finish)	Paint (Black)	1
2	Handle				1
3	Shaft				1
4	Rotor Case				1
5	Packing	Elastomer	Black		1
6	Set Plate	SAPH	Zn		1
7	Rotation Control Cam	SPCC			1
8	Square Hole Washer				1
9	Square Hole Washer				1
10	Truss Screw	S			3
11	Countersunk Spring				3
12	Flat Washer	SPCC			1
13	Countersunk Screw	S			2
14	Lock	ZDC/SUS304	Zn/—		1
15	Key	C3713	Ni		2



Layout of Hole for Installation



The shape of model No.2 is slightly different from 2K.