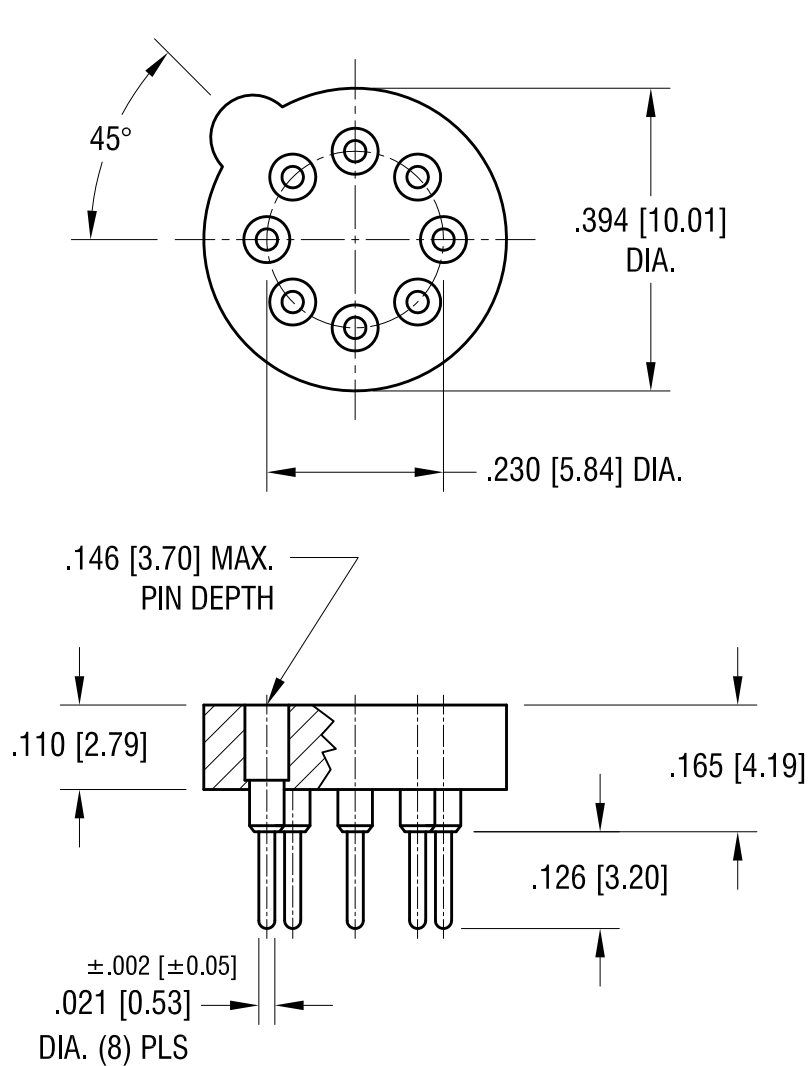


THIS DOCUMENT IS THE PROPERTY OF
KEYSTONE ELECTRONICS CORP. AND
SHALL NOT BE REPRODUCED, DISTRIBUTED
OR USED AS A BASIS FOR MANUFACTURE
WITHOUT PRIOR WRITTEN PERMISSION
FROM KEYSTONE ELECTRONICS CORP.



NOTES:

1. INSULATOR:

MAT'L - GLASS FILLED POLYESTER

CONTACT PIN:

MAT'L - BRASS

FINISH - TIN PLATE

CONTACT SPRING:

MAT'L - BERYLLIUM COPPER

FINISH - .0000300 [.00076] GOLD PLATE

KEYSTONE ELECTRONICS CORP.

www.keyelco.com • ASTORIA, N.Y. 11105-2017 • Tel (718) 956-8900

PART NAME

TRANSISTOR SOCKET FOR TO-100

MATERIAL

AS NOTED

FINISH

AS NOTED

DRN BY

BOONE

DATE

7.09.10

APP'D

LN

SCALE

4X

TOLERANCES

INCH

[MM]

DECIMAL

± .005 [± 0.15]

ANGULAR

± 1°

UNLESS OTHERWISE SPECIFIED

CODE

DWG NO.

C/M

4593

DATE

DESCRIPTION

REV.

Mouser Electronics

Authorized Distributor

Click to View Pricing, Inventory, Delivery & Lifecycle Information:

[Keystone Electronics:](#)

[4593](#)