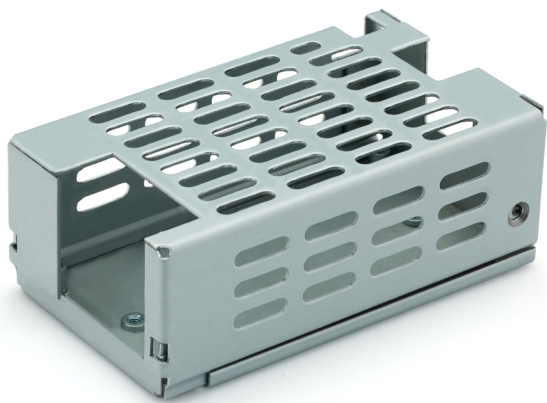


LFWLT100-CK COVER KIT



Features

- Noncorrosive
- Easy assembly
- Low weight
- Fully safe

FOR WLT100, MWLT100, WLT150 & MWLT150 SERIES

Derating Guidelines

WLT100/MWLT100: Ambient > 30°C, derate by 1.3 W/°C to 40°C. 5 CFM recommended to circulate air

WLT150/MWLT150: Ambient > 30°C, derate by 1.3 W/°C to 40°C. 25 CFM recommended to circulate air

Contents

Mounting Base, Cover, Insulator, Fixing Screws

Mechanical Dimensions

Cover and Base Material EG (Zintec) / CRC (Powder coating/Passivation), 1.0 mm

Marked A: PCB MTG; B: SYSTEM MTG, M3 Thread; C: COVER MTG,

All dimensions are in mm. General tolerance : +/-0.5

Mechanical Drawing

