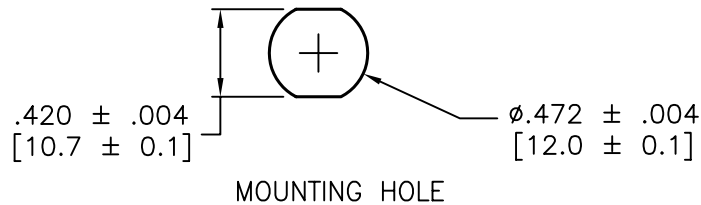
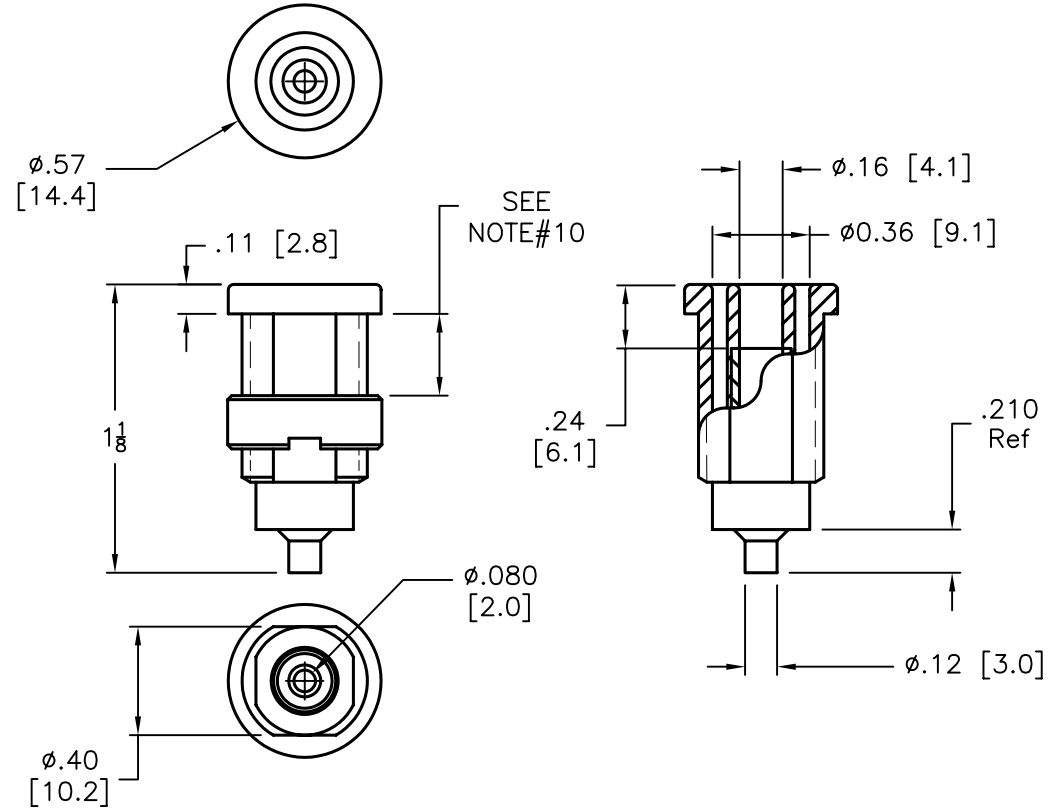


REVISIONS

DCP #	REV	DESCRIPTION	DRAWN	DATE	CHECKD	DATE	APPRVD	DATE
170	A	RELEASED	HYO	1/10/00	JC	6/27/00	DJC	7/11/00
1803	B	O.A was 1.07	JWM	6/21/06	HO	6/21/06	HO	6/21/06

SPECIFICATIONS:

1. SAFETY SOCKET W/ Ø.080 [2.0] SOLDER HOLE
2. INSULATOR: POLYACETAL
3. CONTACT: BRASS, NICKEL PLATED
4. LOCKING NUT: BRASS, NICKEL PLATED
5. VOLTAGE: 1000V CATIII P2 (IEC1010-1)
- 6.CURRENT: 25A MAX.
7. RESISTANCE: <5 milliohms
8. TEMPERATURE: -20 °C TO +80 °C.
9. INSULATOR THREAD, M12 X 0.75
10. MAXIMUM PANEL THICKNESS: .40 (10.2).



DISCLAIMER:
ALL STATEMENTS AND TECHNICAL INFORMATION CONTAINED HEREIN ARE BASED UPON INFORMATION AND/OR TESTS WE BELIEVE TO BE ACCURATE AND RELIABLE. SINCE CONDITIONS OF USE ARE BEYOND OUR CONTROL, THE USER SHALL DETERMINE THE SUITABILITY OF THE PRODUCT FOR THE INTENDED USE AND ASSUME ALL RISK AND LIABILITY WHATSOEVER IN CONNECTION THEREWITH.

TOLERANCES:
Tolerances Unless
Otherwise Specified
Fractions $\pm 1/32$
Decimals
.XX $\pm .01$
.XXX $\pm .005$

DRAWN BY:	DATE:
HISHAM ODISH	1/10/00
CHECKED BY:	DATE:
JOHN COLE	6/27/00
APPROVED BY:	DATE:
DANIEL CAREY	7/11/00

DRAWING TITLE: SAFETY SOCKET, SOLDER, RED			
SIZE A	DWG. NO. 2269	ELECTRONIC FILE 92N4631.DWG	REV B
SCALE: NTS		U.O.M.: INCHES [mm]	SHEET: 1 OF 1