

## CMOS 8-Bit Microcontroller

**TMP86C847, TMP86CH47, TMP86CM47**

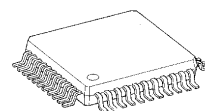
The TMP86C847/H47/M47 are the high-speed, high-performance and low-power consumption 8-bit microcomputer, including ROM, RAM, multi-function timer/counter, serial interface a 10-bit AD converter on chip.

Product No.	ROM	RAM	Package	OTP MCU
TMP86C847U	8 K × 8 bits	512 × 8 bits	P-LQFP44-1010-0.80A	TMP86PM47U
TMP86CH47U	16 K × 8 bits			
TMP86CM47U	32 K × 8 bits	1 K × 8 bits		

**Features**

- ◆ 8-bit single chip microcomputer TLCS-870/C series
- ◆ Instruction execution time: 0.25  $\mu$ s (at 16 MHz)  
122  $\mu$ s (at 32.768 kHz)
- ◆ 132 types and 731 basic instructions
- ◆ 18 interrupt sources (External: 6, Internal: 12)
- ◆ Input/Output ports (35 pins)
- ◆ 8-bit timer counter: 2 ch
  - Timer, PWM, PPG, PDO, Event counter modes
- ◆ Time Base Timer
- ◆ Watchdog Timer
  - Interrupt source/reset output (programmable)
- ◆ Serial interface
  - 8-bit SIO: 1 ch
  - 8-bit UART: 1 ch

P-LQFP44-1010-0.80A



TMP86C847U  
TMP86CH47U  
TMP86CM47U

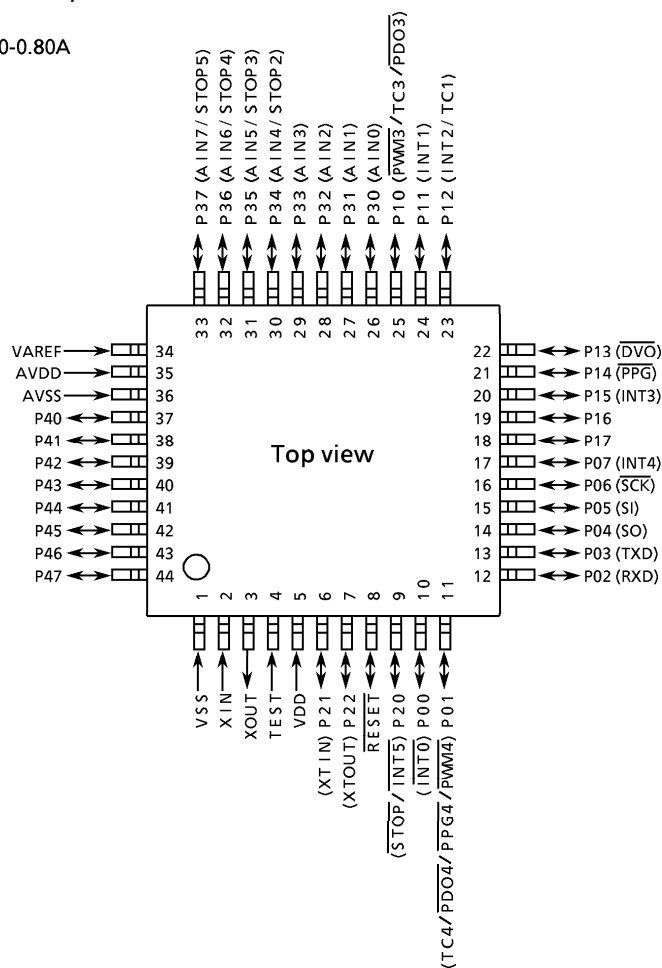
000707EBP1

- For a discussion of how the reliability of microcontrollers can be predicted, please refer to Section 1.3 of the chapter entitled Quality and Reliability Assurance / Handling Precautions.
- TOSHIBA is continually working to improve the quality and reliability of its products. Nevertheless, semiconductor devices in general can malfunction or fail due to their inherent electrical sensitivity and vulnerability to physical stress. It is the responsibility of the buyer, when utilizing TOSHIBA products, to comply with the standards of safety in making a safe design for the entire system, and to avoid situations in which a malfunction or failure of such TOSHIBA products could cause loss of human life, bodily injury or damage to property. In developing your designs, please ensure that TOSHIBA products are used within specified operating ranges as set forth in the most recent TOSHIBA products specifications. Also, please keep in mind the precautions and conditions set forth in the "Handling Guide for Semiconductor Devices," or "TOSHIBA Semiconductor Reliability Handbook" etc..
- The TOSHIBA products listed in this document are intended for usage in general electronics applications (computer, personal equipment, office equipment, measuring equipment, industrial robotics, domestic appliances, etc.). These TOSHIBA products are neither intended nor warranted for usage in equipment that requires extraordinarily high quality and/or reliability or a malfunction or failure of which may cause loss of human life or bodily injury ("Unintended Usage"). Unintended Usage include atomic energy control instruments, airplane or spaceship instruments, transportation instruments, traffic signal instruments, combustion control instruments, medical instruments, all types of safety devices, etc.. Unintended Usage of TOSHIBA products listed in this document shall be made at the customer's own risk.
- The products described in this document are subject to the foreign exchange and foreign trade laws.
- The information contained herein is presented only as a guide for the applications of our products. No responsibility is assumed by TOSHIBA CORPORATION for any infringements of intellectual property or other rights of the third parties which may result from its use. No license is granted by implication or otherwise under any intellectual property or other rights of TOSHIBA CORPORATION or others.
- The information contained herein is subject to change without notice.

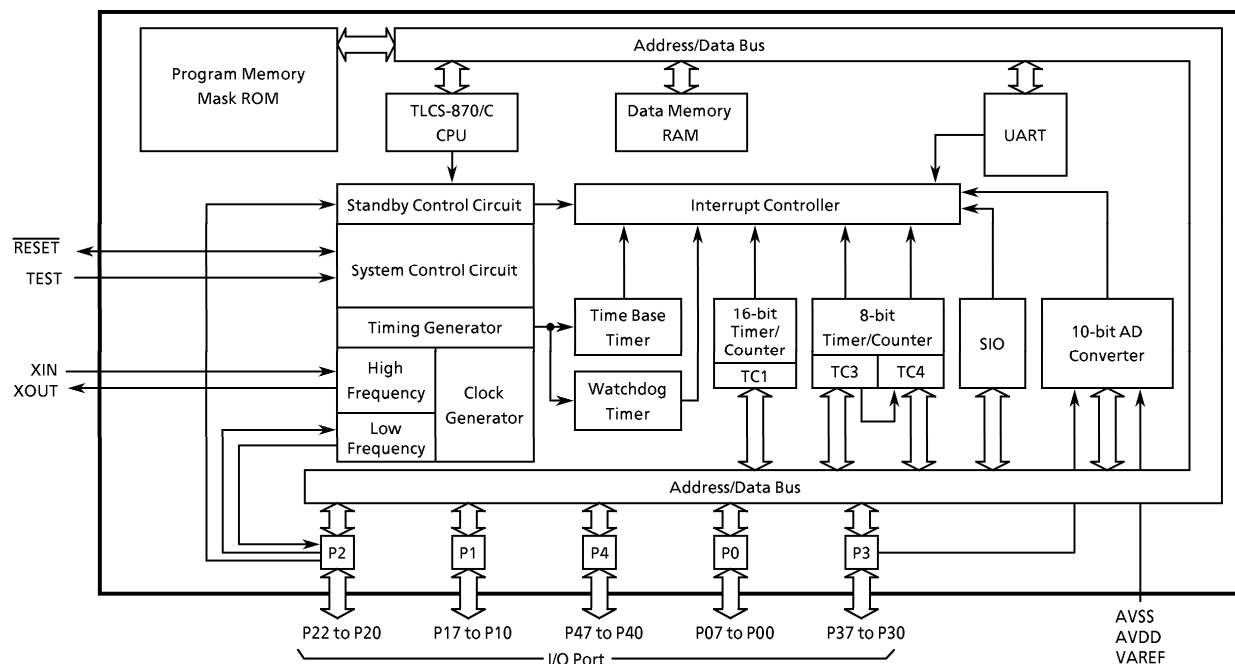
- ◆ 10-bit successive approximation type AD converter
  - Analog input: 8 ch
- ◆ 16-bit timer counter: 1 ch
  - Timer, Event counter, Pulse width measurement, Programmable Pulse Generator (PPG), External-triggered Window modes
- ◆ Key On Wake Up: 4 ch
- ◆ Dual clock operation
  - Single/Dual-clock mode
- ◆ Nine power saving operating modes
  - STOP mode: Oscillation stops. Battery/Capacitor back-up. Port output hold/High-impedance.
  - SLOW 1, 2 mode: Low power consumption operation using low-frequency clock. (32.768 kHz)
  - IDLE 0 mode: CPU stops, and peripherals operate using high-frequency clock of Time-Base-Timer. Release by INTTBT interrupt.
  - IDLE 1 mode: CPU stops, and peripherals operate using high-frequency clock. Release by interrupts.
  - IDLE 2 mode: CPU stops, and peripherals operate using high and low frequency clock. Release by interrupts.
  - SLEEP 0 mode: CPU stops, and peripherals operate using low-frequency clock of Time-Base-Timer. Release by INTTBT interrupt.
  - SLEEP 1 mode: CPU stops, and peripherals operate using low-frequency clock. Release by interrupts.
  - SLEEP 2 mode: CPU stops, and peripherals operate using high and low frequency clock. Release by interrupts.
- ◆ Wide operating voltage: 4.5 to 5.5 V at 16 MHz/32.768 kHz  
2.7 to 5.5 V at 8 MHz/32.768 kHz  
1.8 to 5.5 V at 4.2 MHz/32.768 kHz

## Pin Assignments (Top View)

P-LQFP44-1010-0.80A



## Block Diagram



## Pin Functions

Pin Name	I/O	Functions			
P07 (INT4)	I/O (Input)	8-bit I/O port. When used as input port, external interrupt input, serial clock input/output, serial data input/output and timer/counter 4 input/output, the latch must be set to "1".	External interrupt input		
P06 (SCK)	I/O (Input/Output)		SIO input/output		
P05 (SI)	I/O (Input)				
P04 (SO)	I/O (Output)		UART Data output		
P03 (TXD)	I/O (Output)		UART Data input		
P02 (RXD)	I/O (Input)		Timer/Counter input PPG output, PWM output, PDO output		
P01 (PWM4/TC4/ PDO4/PPG4)	I/O (Input/Output)		External interrupt input		
P00 (INT0)	I/O (Input)				
P17	I/O	8-bit I/O port with latch. Each bit of these ports can be individually configured as an input or an output under software control. An output latch is set to "1" when using it as a functional terminal.	—		
P16	I/O				
P15 (INT3)	I/O (Input)		External interrupt input		
P14 (PPG)	I/O (Output)		PPG output		
P13 (DVO)	I/O (Output)		Divider output		
P12 (INT2/TC1)	I/O (Input)		External interrupt input. Timer/Counter input		
P11 (INT1)	I/O (Input)		External interrupt input.		
P10 (PWM3/TC3/PDO3)	I/O (Input/Output)		Timer/Counter input PWM output, PDO output		
P20 (INT5/STOP1)	I/O (Input)	3-bit I/O port with latch. When used as input port, external interrupt input, and STOP mode release signal input, the latch must be set to "1".	External interrupt input STOP mode release signal input		
P21 (XTIN)	I/O (Input)		Resonator connecting pins for low-frequency clock. For inputting external clock, XTIN is used and XTOUT is opened.		
P22 (XTOUT)	I/O (Output)				
P37 (AIN7/STOP5)	I/O (Input)	8-bit I/O port. Each bit of these ports can be individually configured as an input or output under software control. When used as analog input, then must be set to "1".	AD converter analog inputs		S T O P m o d e r e l e a s e s i g n a l i n p u t
P36 (AIN6/STOP4)					
P35 (AIN5/STOP3)					
P34 (AIN4/STOP2)					
P33 (AIN3)					
P32 (AIN2)					
P31 (AIN1)					
P30 (AIN0)					
P47	I/O	8-bit I/O port with latch. Each bit of these ports can be individually configured as an input or an output under software control.	—		
P46					
P45					
P44					
P43					
P42					
P41					
P40					
TEST	Input	Test pin for out-going test. Be fixed to Low.			
RESET	I/O	Reset signal input or watchdog timer output/address-trap-reset output			
XIN	Input	Resonator connecting pins for high-frequency clock. For inputting external clock, XIN is used and XOUT is opened.			
XOUT	Output				
VSS	Power Supply	0.0 [V] (GND)			
VDD		+ 5 V			
AVSS		0.0 [V] (GND)			
AVDD		AD circuit power supply			
VAREF		Analog reference voltage inputs (High, Low)			

## Operational Description

### 1. CPU Core Functions

The CPU core consists of a CPU, a system clock controller, and an interrupt controller.

This section provides a description of the CPU core, the program memory, the data memory, the external memory interface, and the reset circuit.

#### 1.1 Memory Address Map

The TMP86C847/H47/M47 memory consist of 4 blocks: ROM, RAM, DBR (Data Buffer Register) and SFR (Special Function Register). They are all mapped in 64-Kbyte address space. Figure 1-1 shows the TMP86C847/H47/M47 memory address map. The general-purpose registers are not assigned to the RAM address space.

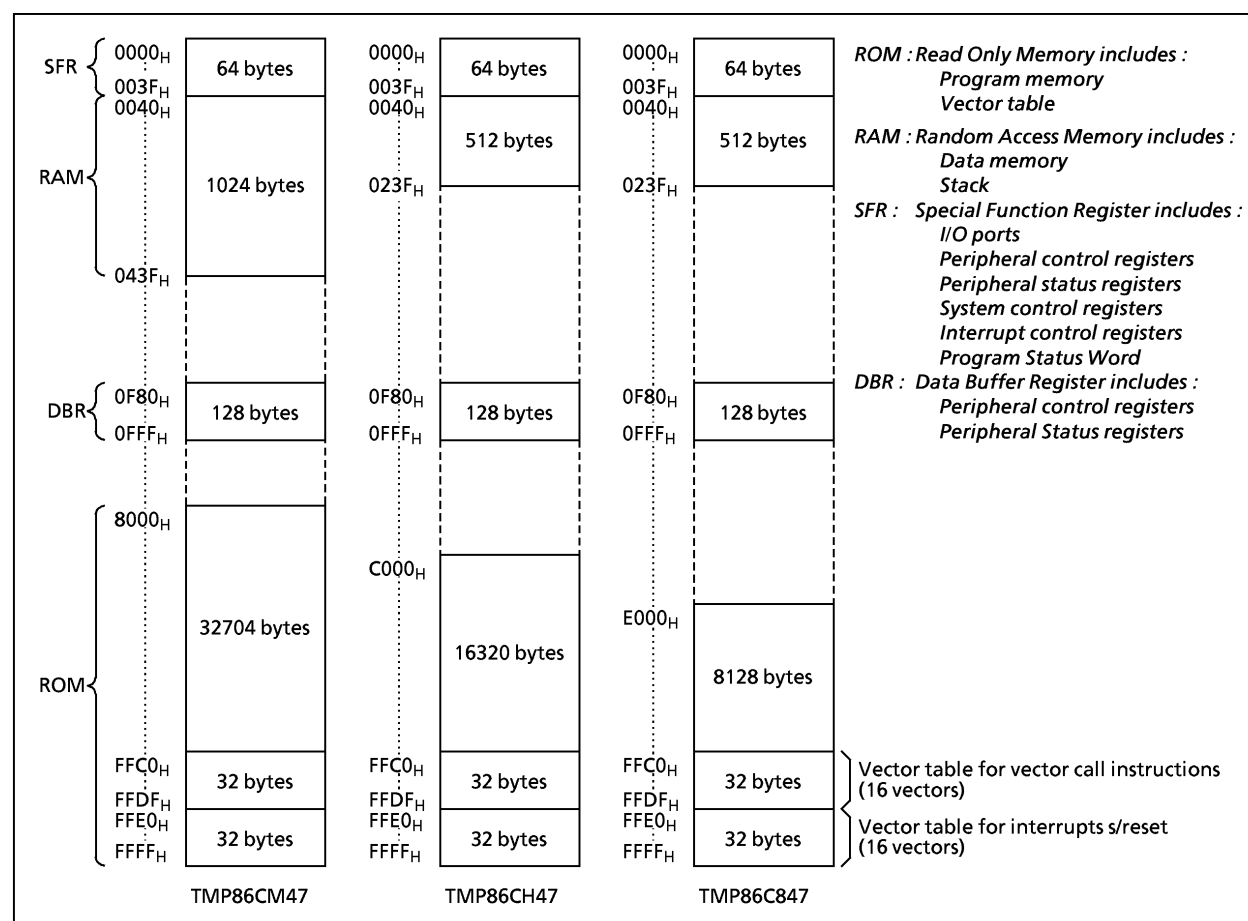


Figure 1-1. Memory Address Maps

#### 1.2 Program Memory (ROM)

The TMP86C847 has a 8 K×8 bits (Address E000<sub>H</sub> to FFFF<sub>H</sub>), TMP86CH47 has a 16 K×8 bits (Address C000<sub>H</sub> to FFFF<sub>H</sub>), and the TMP86CM47 has a 32 K×8 bits (address 8000<sub>H</sub> to FFFF<sub>H</sub>) of program memory (mask programmed ROM). However, placing program memory on the internal RAM is deregulated if a certain procedure is executed (See 2.4.5 Address trap).

## 4. Electrical Characteristics

Absolute Maximum Ratings (V<sub>SS</sub> = 0 V)

Parameter	Symbol	Pins	Rating	Unit
Supply Voltage	V <sub>DD</sub>		– 0.3 to 5.5	V
Input Voltage	V <sub>IN</sub>		– 0.3 to V <sub>DD</sub> + 0.3	
Output Voltage	V <sub>OUT</sub>		– 0.3 to V <sub>DD</sub> + 0.3	
Output Current (Per 1 pin)	I <sub>OUT1</sub> I <sub>OH</sub>	P1, P3, P4 port	– 1.8	mA
	I <sub>OUT2</sub> I <sub>OL</sub>	P1, P3 port	3.2	
	I <sub>OUT3</sub> I <sub>OL</sub>	P0, P2, P4 port	30	
Output Current (Total)	ΣI <sub>OUT1</sub>	P1, P3 port	60	
	ΣI <sub>OUT2</sub>	P0, P2, P4 port	80	
Power Dissipation [T <sub>opr</sub> = 85°C]	PD		250	
Soldering Temperature (Time)	T <sub>sld</sub>		260 (10 sec)	°C
Storage Temperature	T <sub>stg</sub>		– 55 to 125	
Operating Temperature	T <sub>opr</sub>		– 40 to 85	

*Note: The absolute maximum ratings are rated values, which must not be exceeded during operation, even for an instant. Any one of the ratings must not be exceeded. If any absolute maximum rating is exceeded, a device may break down or its performance may be degraded, causing it to catch fire or explode resulting in injury to the user. Thus, when designing products which include this device, ensure that no absolute maximum rating value will ever be exceeded.*

Recommended Operating Condition (V<sub>SS</sub> = 0 V, T<sub>opr</sub> = – 40 to 85°C)

Parameter	Symbol	Pins	Condition		Min	Max	Unit
Supply Voltage	V <sub>DD</sub>		f <sub>c</sub> = 16 MHz	NORMAL1, 2 mode	4.5	5.5	V
				IDLE1, 2 mode			
			f <sub>c</sub> = 8 MHz	NORMAL1, 2 mode	2.7		
				IDLE1, 2 mode			
			f <sub>c</sub> = 4.2 MHz	NORMAL1, 2 mode	1.8		
				IDLE1, 2 mode			
			f <sub>s</sub> = 32.768 kHz	SLOW mode			
				SLEEP mode			
	STOP mode						
Input high Level	V <sub>IH1</sub>	Except Hysteresis input	V <sub>DD</sub> ≥ 4.5 V		V <sub>DD</sub> × 0.70	V <sub>DD</sub>	
	V <sub>IH2</sub>	Hysteresis input			V <sub>DD</sub> × 0.75		
	V <sub>IH3</sub>		V <sub>DD</sub> < 4.5 V	V <sub>DD</sub> × 0.90			
Input low Level	V <sub>IL1</sub>	Except Hysteresis input	V <sub>DD</sub> ≥ 4.5 V		0	V <sub>DD</sub> × 0.30	
	V <sub>IL2</sub>	Hysteresis input				V <sub>DD</sub> × 0.25	
	V <sub>IL3</sub>		V <sub>DD</sub> < 4.5 V	V <sub>DD</sub> × 0.10			
Clock Frequency	f <sub>c</sub>	XIN, XOUT	V <sub>DD</sub> = 4.5 to 5.5 V		1.0	16.0	MHz
			V <sub>DD</sub> = 2.7 to 5.5 V			8.0	
			V <sub>DD</sub> = 1.8 to 5.5 V			4.2	
	f <sub>s</sub>	XTIN, XTOUT			30.0	34.0	kHz

*Note: The recommended operating conditions for a device are operating conditions under which it can be guaranteed that the device will operate as specified. If the device is used under operating conditions other than the recommended operating conditions (supply voltage, operating temperature range, specified AC/DC values etc.), malfunction may occur. Thus, when designing products which include this device, ensure that the recommended operating conditions for the device are always adhered to.*

## DC Characteristics

(V<sub>SS</sub> = 0 V, T<sub>opr</sub> = – 40 to 85°C)

Parameter	Symbol	Pins	Condition	Min	Typ.	Max	Unit
Hysteresis Voltage	V <sub>HS</sub>	Hysteresis input		–	0.9	–	V
Input Current	I <sub>IN1</sub>	TEST	V <sub>DD</sub> = 5.5 V, V <sub>IN</sub> = 5.5 V/0 V	–	–	± 2	μA
	I <sub>IN2</sub>	Sink Open Drain, Tri-state					
	I <sub>IN3</sub>	RESET, STOP					
Input Resistance	R <sub>IN1</sub>	TEST Pull-Down		–	70	–	kΩ
	R <sub>IN2</sub>	RESET Pull-Up		100	200	450	
Output Leakage Current	I <sub>LO1</sub>	Sink Open Drain	V <sub>DD</sub> = 5.5 V, V <sub>OUT</sub> = 5.5 V	–	–	2	μA
	I <sub>LO2</sub>	Tri-state	V <sub>DD</sub> = 5.5 V, V <sub>OUT</sub> = 5.5 V/0 V	–	–	± 2	
Output High Voltage	V <sub>OH</sub>	Tri-state Port	V <sub>DD</sub> = 4.5 V, V <sub>OH</sub> = – 0.7 mA	4.1	–	–	V
Output Low Current	V <sub>OL</sub>	Except X <sub>OUT</sub> , P0, P4, P2 Port	V <sub>DD</sub> = 4.5 V, V <sub>OL</sub> = 1.6 mA	–	–	0.4	mA
	I <sub>OL</sub>	High Current Port (P0, P2, P4 Port)	V <sub>DD</sub> = 4.5 V, V <sub>OL</sub> = 1.0 V	–	20	–	
Supply Current in NORMAL1, 2 mode	I <sub>DD</sub>		V <sub>DD</sub> = 5.5 V V <sub>IN</sub> = 5.3/0.2 V f <sub>c</sub> = 16 MHz f <sub>s</sub> = 32.768 kHz	–	7.5	9	mA
Supply Current in IDLE0, 1, 2 mode				–	5.5	6.5	
Supply Current in SLOW1 mode			V <sub>DD</sub> = 3.0 V V <sub>IN</sub> = 2.8/0.2 V f <sub>s</sub> = 32.768 kHz	–	8	20	μA
Supply Current in SLEEP1 mode				–	5	15	
Supply Current in SLEEP0 mode				–	4	13	
Supply Current in STOP mode			V <sub>DD</sub> = 5.5 V V <sub>IN</sub> = 5.3/0.2 V	–	0.5	10	

Note 1: Typical values show those at T<sub>opr</sub> = 25°C, V<sub>DD</sub> = 5 V

Note 2: Input current (I<sub>IN1</sub>, I<sub>IN3</sub>); The current through pull-up or pull-down resistor is not included.

Note 3: I<sub>DD</sub> does not include I<sub>REF</sub> current.

## AD Conversion Characteristics

(V<sub>SS</sub> = 0.0 V, 4.5 V to 5.5 V, Topr = – 40 to 85°C)

Parameter	Symbol	Condition	Min	Typ.	Max	Unit
Analog Reference Voltage	V <sub>AREF</sub>		A <sub>VDD</sub> – 1.0	–	A <sub>VDD</sub>	V
Power Supply Voltage of Analog Control Circuit	A <sub>VDD</sub>		V <sub>DD</sub>			
Analog Reference Voltage Range	△V <sub>AREF</sub>		3.5	–	–	
Analog Input Voltage	V <sub>AIN</sub>		V <sub>SS</sub>	–	V <sub>AREF</sub>	
Power Supply Current of Analog Reference Voltage	I <sub>REF</sub>	V <sub>DD</sub> = A <sub>VDD</sub> = V <sub>AREF</sub> = 5.5 V V <sub>SS</sub> = AV <sub>SS</sub> = 0.0 V	–	0.6	1.0	mA
Non linearity Error		V <sub>DD</sub> = A <sub>VDD</sub> = 5.0 V, V <sub>SS</sub> = AV <sub>SS</sub> = 0.0 V V <sub>AREF</sub> = 5.0 V	–	–	± 2	LSB
Zero Point Error			–	–	± 2	
Full Scale Error			–	–	± 2	
Total Error			–	–	± 2	

(V<sub>SS</sub> = 0.0 V, 2.7 V to 4.5 V, Topr = – 40 to 85°C)

Parameter	Symbol	Condition	Min	Typ.	Max	Unit
Analog Reference Voltage	V <sub>AREF</sub>		A <sub>VDD</sub> – 1.0	–	A <sub>VDD</sub>	V
Power Supply Voltage of Analog Control Circuit	A <sub>VDD</sub>		V <sub>DD</sub>			
Analog Reference Voltage Range	△V <sub>AREF</sub>		2.5	–	–	
Analog Input Voltage	V <sub>AIN</sub>		V <sub>SS</sub>	–	V <sub>AREF</sub>	
Power Supply Current of Analog Reference Voltage	I <sub>REF</sub>	V <sub>DD</sub> = A <sub>VDD</sub> = V <sub>AREF</sub> = 4.5 V V <sub>SS</sub> = AV <sub>SS</sub> = 0.0 V	–	0.5	0.8	mA
Non linearity Error		V <sub>DD</sub> = A <sub>VDD</sub> = 2.7 V, V <sub>SS</sub> = AV <sub>SS</sub> = 0.0 V V <sub>AREF</sub> = 2.7 V	–	–	± 2	LSB
Zero Point Error			–	–	± 2	
Full Scale Error			–	–	± 2	
Total Error			–	–	± 2	

(V<sub>SS</sub> = 0.0 V, 2.0 V to 2.7 V, Topr = – 40 to 85°C)(V<sub>SS</sub> = 0.0 V, 1.8 V to 2.0 V, Topr = – 10 to 85°C)

Parameter	Symbol	Condition	Min	Typ.	Max	Unit
Analog Reference Voltage	V <sub>AREF</sub>		A <sub>VDD</sub> – 0.9	–	A <sub>VDD</sub>	V
Power Supply Voltage of Analog Control Circuit	A <sub>VDD</sub>		V <sub>DD</sub>			
Analog Reference Voltage Range	ΔV <sub>AREF</sub>	1.8 V ≤ V <sub>DD</sub> < 2.0 V	1.8	–	–	
		2.0 V ≤ V <sub>DD</sub> < 2.7 V	2.0	–	–	
Analog Input Voltage	V <sub>AIN</sub>		V <sub>SS</sub>	–	V <sub>AREF</sub>	
Power Supply Current of Analog Reference Voltage	I <sub>REF</sub>	V <sub>DD</sub> = A <sub>VDD</sub> = V <sub>AREF</sub> = 2.7 V V <sub>SS</sub> = AV <sub>SS</sub> = 0.0 V	–	0.3	0.5	mA
Non linearity Error		V <sub>DD</sub> = A <sub>VDD</sub> = 1.8 V, V <sub>SS</sub> = AV <sub>SS</sub> = 0.0 V V <sub>AREF</sub> = 1.8 V	–	–	± 4	LSB
Zero Point Error			–	–	± 4	
Full Scale Error			–	–	± 4	
Total Error			–	–	± 4	

Note 1: The total error includes all errors except a quantization error, and is defined as a maximum deviation from the ideal conversion line.

Note 2: Conversion time is different in recommended value by power supply voltage.

About conversion time, please refer to "2.8.2 Register Framing".

Note 3: Please use input voltage to AIN input Pin in limit of V<sub>AREF</sub> – V<sub>SS</sub>.

When voltage of range outside is input, conversion value becomes unsettled and gives affect to other channel conversion value.

Note 4: Analog Reference Voltage Range: ΔV<sub>AREF</sub> = V<sub>AREF</sub> – V<sub>SS</sub>

Note 5: When AD is used with V<sub>DD</sub> < 2.7 V, the guaranteed temperature range varies with the operating voltage.

## AC Characteristics

(V<sub>SS</sub> = 0 V, V<sub>DD</sub> = 4.5 to 5.5 V, T<sub>opr</sub> = – 40 to 85°C)

Parameter	Symbol	Condition	Min	Typ.	Max	Unit
Machine Cycle Time	tcy	NORMAL1, 2 mode	0.25	–	4	$\mu$ s
		IDLE0, 1, 2 mode				
		SLOW1, 2 mode	117.6	–	133.3	
		SLEEP0, 1, 2 mode				
High Level Clock Pulse Width	twcH	For external clock operation (XIN input) fc = 16 MHz	–	31.25	–	ns
Low Level Clock Pulse Width	twcL					
High Level Clock Pulse Width	twsh	For external clock operation (XTIN input) fs = 32.768 kHz	–	15.26	–	$\mu$ s
Low Level Clock Pulse Width	twsl					

(V<sub>SS</sub> = 0 V, V<sub>DD</sub> = 2.7 to 4.5 V, T<sub>opr</sub> = – 40 to 85°C)

Parameter	Symbol	Condition	Min	Typ.	Max	Unit
Machine Cycle Time	tcy	NORMAL1, 2 mode	0.5	–	4	$\mu$ s
		IDLE0, 1, 2 mode				
		SLOW1, 2 mode	117.6	–	133.3	
		SLEEP0, 1, 2 mode				
High Level Clock Pulse Width	twcH	For external clock operation (XIN input) fc = 8 MHz	–	62.5	–	ns
Low Level Clock Pulse Width	twcL					
High Level Clock Pulse Width	twsH	For external clock operation (XTIN input) fs = 32.768 kHz	–	15.26	–	$\mu$ s
Low Level Clock Pulse Width	twsL					

(V<sub>SS</sub> = 0 V, V<sub>DD</sub> = 1.8 to 2.7 V, T<sub>opr</sub> = – 40 to 85°C)

Parameter	Symbol	Condition	Min	Typ.	Max	Unit	
Machine Cycle Time	tcy	NORMAL1, 2 mode	0.95	–	4	$\mu$ s	
		IDLE0, 1, 2 mode					
		SLOW1, 2 mode	117.6	–	133.3		
		SLEEP0, 1, 2 mode					
High Level Clock Pulse Width	twcH	For external clock operation (XIN input) fc = 4.2 MHz	–	119.05	–	ns	
Low Level Clock Pulse Width	twcL						
High Level Clock Pulse Width	twsh	For external clock operation (XTIN input) fs = 32.768 kHz	–	15.26	–	$\mu$ s	
Low Level Clock Pulse Width	twsl						

## Recommended Oscillating Conditions - 1

(V<sub>SS</sub> = 0 V, V<sub>DD</sub> = 4.5 to 5.5 V, T<sub>opr</sub> = – 40 to 85°C)

Parameter	Oscillator	Oscillation Frequency	Recommended Oscillator	Recommended Constant	
				C <sub>1</sub>	C <sub>2</sub>
High-frequency Oscillation	Ceramic Resonator	16 MHz	MURATA CSA16.00MXZ040	10 pF	10 pF
		8 MHz	MURATA CSA8.00MTZ	30 pF	30 pF
			CST8.00MTW	30 pF (built-in)	30 pF (built-in)
Low-frequency Oscillation	Crystal Oscillator	32.768 kHz	MURATA CSA4.19MG	30 pF	30 pF
			CST4.19MGW	30 pF (built-in)	30 pF (built-in)

## Recommended Oscillating Conditions - 2

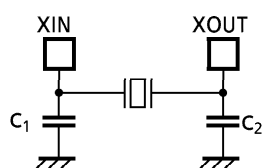
(V<sub>SS</sub> = 0 V, V<sub>DD</sub> = 2.7 to 5.5 V, T<sub>opr</sub> = – 40 to 85°C)

Parameter	Oscillator	Oscillation Frequency	Recommended Oscillator	Recommended Constant	
				C <sub>1</sub>	C <sub>2</sub>
High-frequency Oscillation	Ceramic Resonator	8 MHz	MURATA CSA8.00MTZ	30 pF	30 pF
			CST8.00MTW	30 pF (built-in)	30 pF (built-in)
		4.19 MHz	MURATA CSA4.19MG	30 pF	30 pF
			CST4.19MGW	30 pF (built-in)	30 pF (built-in)

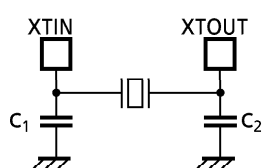
## Recommended Oscillating Conditions - 3

(V<sub>SS</sub> = 0 V, V<sub>DD</sub> = 1.8 to 5.5 V, T<sub>opr</sub> = – 40 to 85°C)

Parameter	Oscillator	Oscillation Frequency	Recommended Oscillator	Recommended Constant	
				C <sub>1</sub>	C <sub>2</sub>
High-frequency Oscillation	Ceramic Resonator	4.19 MHz	MURATA CSA4.19MG	30 pF	30 pF
			CST4.19MGW	30 pF (built-in)	30 pF (built-in)



(1) High-frequency Oscillation



(2) Low-frequency Oscillation

**Note 1:** An electrical shield by metal shield plate on the surface of IC package is recommended in order to protect the device from the high electric field stress applied from CRT (Cathodic Ray Tube) for continuous reliable operation.

**Note 2:** The product numbers and specifications of the resonators by Murata Manufacturing Co., Ltd. are subject to change. For up-to-date information, please refer to the following URL;  
<http://www.murata.co.jp/search/index.html>