

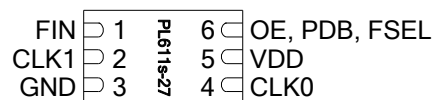
1.8V to 3.3V PicoPLL™ Programmable Clock DESCRIPTION

FEATURES

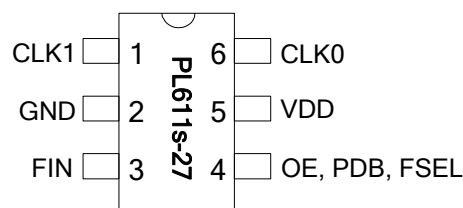
- Advanced One Time Programmable (OTP) PLL design
- Very low Jitter and Phase Noise
 - 30-70ps Pk-Pk typical
- Output Frequency up to
 - 65MHz @ 1.8V operation
 - 90MHz @ 2.5V operation
 - 125MHz @ 3.3V operation
- Reference Input Frequency: 1MHz to 200MHz
- Accepts >0.1V square or sine wave input
- Low current consumption, <10μA when PDB is activated
- One programmable I/O pin can be configured as Output Enable (OE), Frequency Switching (FSEL), or Power Down (PDB) input.
- Outputs disable to Active Low state.
- Single 1.8V ~ 3.3V, ± 10% power supply
- Operating temperature range from -40°C to 85°C
- Available in 6-pin DFN and SOT23 GREEN/RoHS compliant packages.

The PL611s-27 is a general purpose frequency synthesizer and a member of PicoPLL product family. Designed to fit in a small 6-pin DFN, or 6-pin SOT package for high performance applications, the PL611s-27 offers very low phase noise, jitter, and power consumption, while offering 2 clock outputs. The Frequency Switching (FSEL) capability of PL611s-27 allows for programming two sets of frequencies, while the power down feature of PL611s-27, when activated, allows the IC to consume less than 10μA of power. PL611s-27's programming flexibility allows generating any output using a reference input signal.

PACKAGE PIN CONFIGURATION

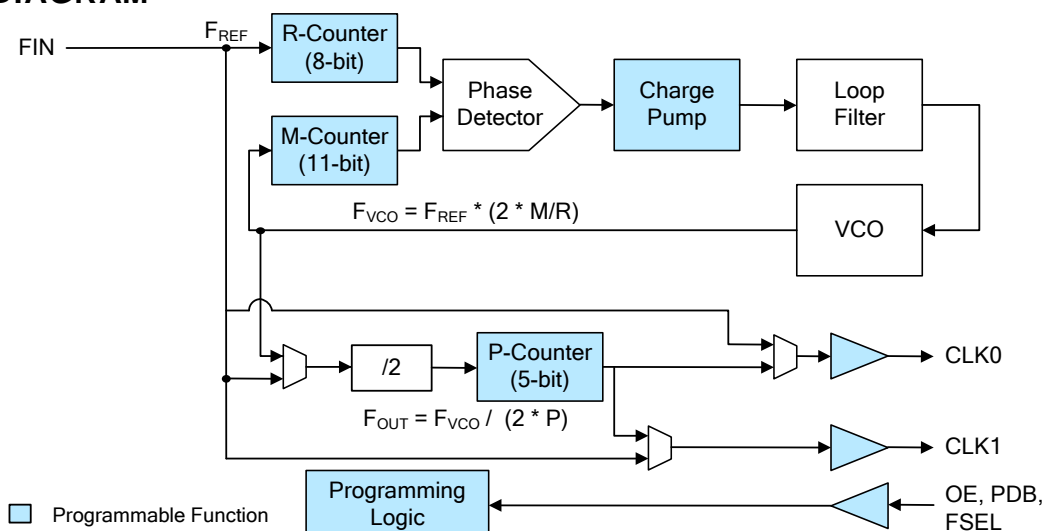


DFN-6L
(2.0 x 1.3 x 0.6mm)



SOT23-6L
(3.0 x 3.0 x 1.35mm)

BLOCK DIAGRAM



1.8V to 3.3V PicoPLL™ Programmable Clock

KEY PROGRAMMING PARAMETERS

CLK[0:1] Output Frequency	Output Drive Strength	Programmable Input/Output
$F_{OUT} = F_{REF} * M / (R * P)$ Where $M = 11$ bit $R = 8$ bit $P = 5$ bit $CLK0 = F_{OUT}, F_{REF}$ or $F_{REF} / (2 * P)$ $CLK1 = F_{REF}$ or $CLK0$	Three optional drive strengths to choose from: <ul style="list-style-type: none"> Low: 4mA Std: 8mA (default) High: 16mA 	One pin can be configured as: <ul style="list-style-type: none"> OE - input PDB - input FSEL - input

PACKAGE PIN ASSIGNMENT

Name	Pin Assignment		Type	Description												
	DFN Pin#	SOT Pin #														
CLK1	2	1	O	Programmable Clock Output. CLK1 = CLK0 or CLK1=F _{REF}												
GND	3	2	P	GND connection												
FIN	1	3	I	Reference input pin												
OE, PDB, FSEL	6	4	I	This programmable I/O pin can be configured as an Output Enable (OE) input, Power Down (PDB) input or Frequency Switching (FSEL) input.												
				<table><tr><th>State</th><th>OE</th><th>PDB</th><th>FSEL</th></tr><tr><td>0</td><td>Disable CLK</td><td>Power Down Mode</td><td>Bank '0'</td></tr><tr><td>1 (default)</td><td>Normal mode</td><td>Normal mode</td><td>Bank '1'</td></tr></table>	State	OE	PDB	FSEL	0	Disable CLK	Power Down Mode	Bank '0'	1 (default)	Normal mode	Normal mode	Bank '1'
				State	OE	PDB	FSEL									
				0	Disable CLK	Power Down Mode	Bank '0'									
1 (default)	Normal mode	Normal mode	Bank '1'													
VDD	5	5	P	VDD connection												
CLK0	4	6	O	Programmable Clock Output												

OE AND PDB FUNCTION DESCRIPTION

OE	PDB	Osc.	PLL	CLK0	CLK1	
					When $CLK1 = F_{REF}$	When $CLK1 = CLK0$
1(Default)	N/A	On	On	On	On	On
0	N/A	On	Off	Active Low	On	Active Low
N/A	1(Default)	On	On	On	On	On
N/A	0	Off	Off	Active Low	Active Low	Active Low

1.8V to 3.3V PicoPLL™ Programmable Clock**FUNCTIONAL DESCRIPTION**

PL611s-27 is a highly featured, very flexible, advanced programmable PLL design for high performance, low-power, small form-factor applications. The PL611s-27 accepts a reference clock input of 1MHz to 200MHz and is capable of producing two outputs up to 125MHz. This flexible design allows the PL611s-27 to deliver any PLL generated frequency, F_{REF} (Ref Clk) frequency or $F_{REF}/(2 \times P)$ to CLK0 and/or CLK1. Some of the design features of the PL611s-27 are mentioned below:

PLL Programming

The PLL in the PL611s-27 is fully programmable. The PLL is equipped with an 8-bit input frequency divider (R-Counter), and an 11-bit VCO frequency feedback loop divider (M-Counter). The output of the PLL is transferred to a 5-bit post VCO divider (P-Counter). The output frequency is determined by the following formula $[F_{OUT} = F_{REF} \times M / (R \times P)]$.

Clock Output (CLK0)

CLK0 is the main clock output. The output of CLK0 can be configured as the PLL output ($F_{VCO}/(2 \times P)$), F_{REF} (Ref Clk Frequency) output, or $F_{REF}/(2 \times P)$ output. The output drive level can be programmed to Low Drive (4mA), Standard Drive (8mA) or High Drive (16mA). The maximum output frequency is 125MHz (3.3V).

Clock Output (CLK1)

The CLK1 feature allows the PL611s-27 to have an additional clock output. This output can be programmed to one of the following:

F_{REF} - Reference (Ref Clk) Frequency
CLK0

When using the OE function CLK1 will remain "Always On" if programmed as F_{REF} output and *will not* be disabled when OE is pulled low. If CLK1 is programmed to equal CLK0 then the output *will* disable when OE is pulled low. When using the PDB function CLK1 will always be disabled along with CLK0. The output drive level can be programmed to Low Drive (4mA), Standard Drive (8mA) or High Drive (16mA). The maximum output frequency is 125MHz (3.3V).

Output Enable (OE)

The Output Enable feature allows the user to enable and disable the CLK0 and/or CLK1 outputs by toggling the OE pin.

Power-Down Control (PDB)

The Power Down (PDB) feature allows the user to put the PL611s-27 into "Sleep Mode". When activated (logic '0'), PDB 'Disables the PLL, the oscillator circuitry, counters, and all other active circuitry. In Power Down mode the IC consumes <10µA of power.

Frequency Select (FSEL)

The Frequency Select (FSEL) feature allows the PL611s-27 to switch between two pre-programmed banks allowing the device "On the Fly" frequency switching.

1.8V to 3.3V PicoPLL™ Programmable Clock

ELECTRICAL SPECIFICATIONS

ABSOLUTE MAXIMUM RATINGS

PARAMETERS	SYMBOL	MIN.	MAX.	UNITS
Supply Voltage Range	V_{DD}	-0.5	7	V
Input Voltage Range	V_I	-0.5	$V_{DD}+0.5$	V
Output Voltage Range	V_O	-0.5	$V_{DD}+0.5$	V
Soldering Temperature (Green package)			260	°C
Data Retention @ 85°C		10		Year
Storage Temperature	T_S	-65	150	°C
Ambient Operating Temperature*		-40	85	°C

Exposure of the device under conditions beyond the limits specified by Maximum Ratings for extended periods may cause permanent damage to the device and affect product reliability. These conditions represent a stress rating only, and functional operations of the device at these or any other conditions above the operational limits noted in this specification is not implied. *Operating temperature is guaranteed by design. Parts are tested to commercial grade only.

AC SPECIFICATIONS

PARAMETERS	CONDITIONS	MIN.	TYP.	MAX.	UNITS
Input (FIN) Frequency	All operating voltages (see Input Signal Amplitude restrictions below)	1		200	MHz
Input (FIN) Signal Amplitude	DC Coupled, LVCMOS input, High	$0.7 \cdot V_{DD}$			Vpp
	DC Coupled, LVCMOS input, Low			$0.3 \cdot V_{DD}$	
Input (FIN) Signal Amplitude	Internally AC coupled (High Frequency)	0.9		V_{DD}	Vpp
Input (FIN) Signal Amplitude	Internally AC coupled (Low Frequency) $3.3V \leq 50MHz$, $2.5V \leq 40MHz$, $1.8V \leq 15MHz$	0.1		V_{DD}	Vpp
Output Frequency	@ $V_{DD} = 3.3V$			125	MHz
	@ $V_{DD} = 2.5V$			90	MHz
	@ $V_{DD} = 1.8V$			65	MHz
Settling Time	At power-up (after V_{DD} increases over 1.62V)			2	ms
Output Enable Time	OE Function; $T_a=25^\circ C$, 15pF Load. Add one clock period to this measurement for a usable clock output.			10	ns
	PDB Function; $T_a=25^\circ C$, 15pF Load			2	ms
Output Rise Time	15pF Load, 10/90% V_{DD} , High Drive, 3.3V		1.2	1.7	ns
Output Fall Time	15pF Load, 90/10% V_{DD} , High Drive, 3.3V		1.2	1.7	ns
Duty Cycle	$V_{DD} / 2$	45	50	55	%
Period Jitter, Pk-to-Pk* (10,000 samples measured)	Capacitive decoupling between V_{DD} and GND.		70		ps

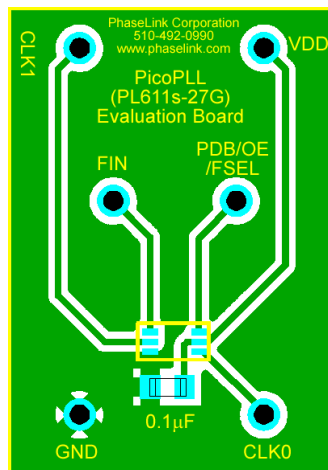
* Note: Jitter performance depends on the programming parameters.

1.8V to 3.3V PicoPLL™ Programmable Clock
DC SPECIFICATIONS

PARAMETERS	SYMBOL	CONDITIONS	MIN.	TYP.	MAX.	UNITS
Supply Current, Dynamic, with Loaded LVCMOS Outputs	I_{DD}	@ $V_{DD} = 3.3V$, 27MHz, load=15pF		5.5		mA
Supply Current, Dynamic, with Loaded LVCMOS Outputs	I_{DD}	@ $V_{DD} = 2.5V$, 27MHz, load=15pF		3.8		mA
Supply Current, Dynamic with Loaded LVCMOS Outputs	I_{DD}	@ $V_{DD} = 1.8V$, 27MHz, load=15pF		1.8		mA
Stand By Current, with Loaded Outputs	I_{DD}	When PDB=0			<10	μA
Operating Voltage	V_{DD}		1.62		3.63	V
Power Supply Ramp	t_{PU}	Time for V_{DD} to reach 90% V_{DD} . Power ramp must be monotonic.			100	ms
Output Low Voltage	V_{OL}	$I_{OL} = +4mA$ Std Drive			0.4	V
Output High Voltage	V_{OH}	$I_{OH} = -4mA$ Std Drive	$V_{DD} - 0.4$			V
Output Current, Low Drive	I_{OSD}	$V_{OL} = 0.4V$, $V_{OH} = 2.4V$	4			mA
Output Current, Standard Drive	I_{OSD}	$V_{OL} = 0.4V$, $V_{OH} = 2.4V$	8			mA
Output Current, High Drive	I_{OHD}	$V_{OL} = 0.4V$, $V_{OH} = 2.4V$	16			mA

1.8V to 3.3V PicoPLL™ Programmable Clock

LAYOUT RECOMMENDATIONS



DFN-6L Evaluation Board

The following guidelines are to assist you with a performance optimized PCB design:

Signal Integrity and Termination Considerations

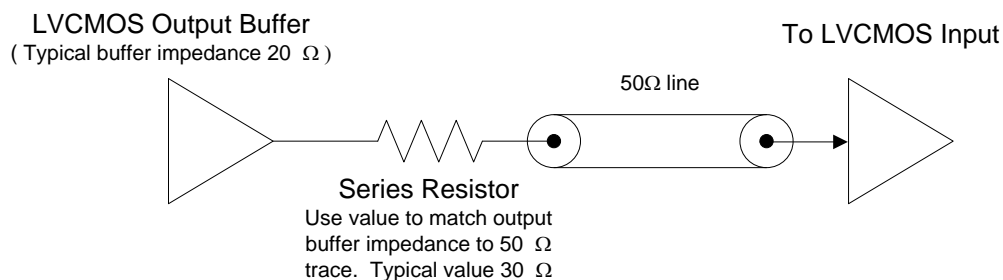
- Keep traces short!
- Trace = Inductor. With a capacitive load this equals ringing!
- Long trace = Transmission Line. Without proper termination this will cause reflections (looks like ringing).
- Design long traces (> 1 inch) as “striplines” or “microstrips” with defined impedance.
- Match trace at one side to avoid reflections bouncing back and forth.

Decoupling and Power Supply Considerations

- Place decoupling capacitors as close as possible to the VDD pin(s) to limit noise from the power supply
- Multiple VDD pins should be decoupled separately for best performance.
- Addition of a ferrite bead in series with VDD can help prevent noise from other board sources
- Value of decoupling capacitor is frequency dependant. Typical values to use are 0.1μF for designs using frequencies < 50MHz and 0.01μF for designs using frequencies > 50MHz.

Typical LVCMOS termination

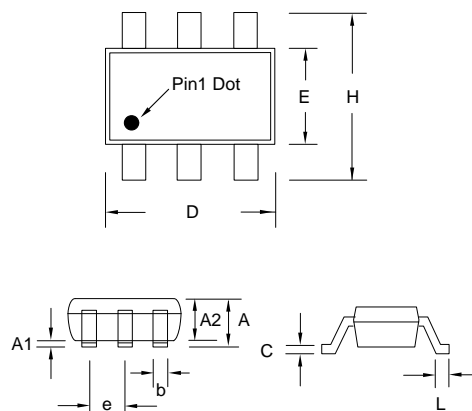
Place Series Resistor as close as possible to LVCMOS output



PACKAGE DRAWINGS (GREEN PACKAGE COMPLIANT)

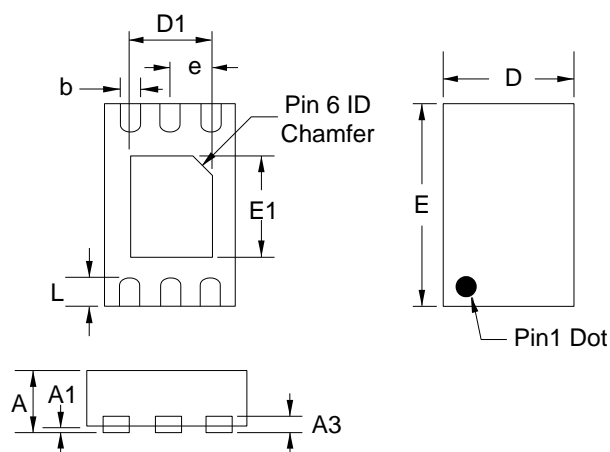
SOT23-6L

Symbol	Dimension in MM	
	Min.	Max.
A	1.05	1.35
A1	0.05	0.15
A2	1.00	1.20
b	0.30	0.50
c	0.08	0.20
D	2.80	3.00
E	1.50	1.70
H	2.60	3.0
L	0.35	0.55
e	0.95 BSC	



DFN-6L

Symbol	Dimension in MM	
	Min.	Max.
A	0.50	0.60
A1	0.00	0.05
A3	0.152	0.152
b	0.15	0.25
e	0.40BSC	
D	1.25	1.35
E	1.95	2.05
D1	0.75	0.85
E1	0.95	1.05
L	0.20	0.30



1.8V to 3.3V PicoPLL™ Programmable Clock ORDERING INFORMATION (GREEN PACKAGE COMPLIANT)

For part ordering, please contact our Sales Department:

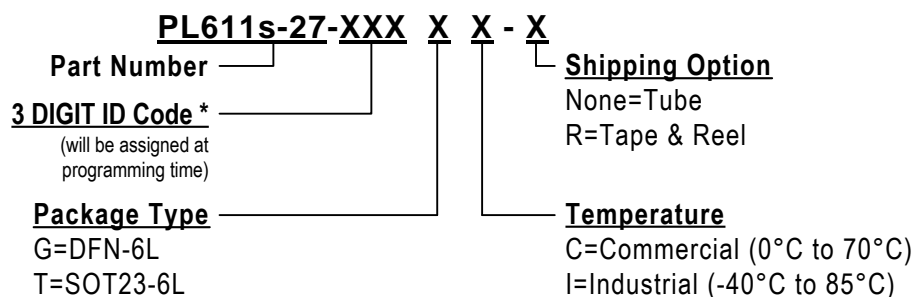
2180 Fortune Drive, San Jose, CA 95131, USA

Tel: (408) 944-0800 Fax: (408) 474-1000

PART NUMBER

The order number for this device is a combination of the following:

Part number, Package type and Operating temperature range



* Micrel will assign a unique 3-digit ID code for each approved programmed part number.

Part/Order Number	Marking†	Package Option
PL611s-27-XXXGC-R	XXX	6-Pin DFN (Tape and Reel)
PL611s-27-XXXT-C-R	27XXX	6-Pin SOT23 (Tape and Reel)

† Note: 'XXX' designates marking identifier that, at times, could be independent of the part number.

Micrel Inc., reserves the right to make changes in its products or specifications, or both at any time without notice. The information furnished by Micrel is believed to be accurate and reliable. However, Micrel makes no guarantee or warranty concerning the accuracy of said information and shall not be responsible for any loss or damage of whatever nature resulting from the use of, or reliance upon this product.

LIFE SUPPORT POLICY: Micrel's products are not authorized for use as critical components in life support devices or systems without the express written approval of the President of Micrel Inc.