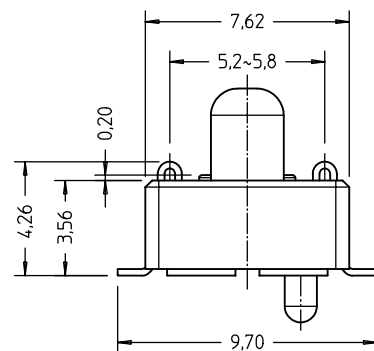
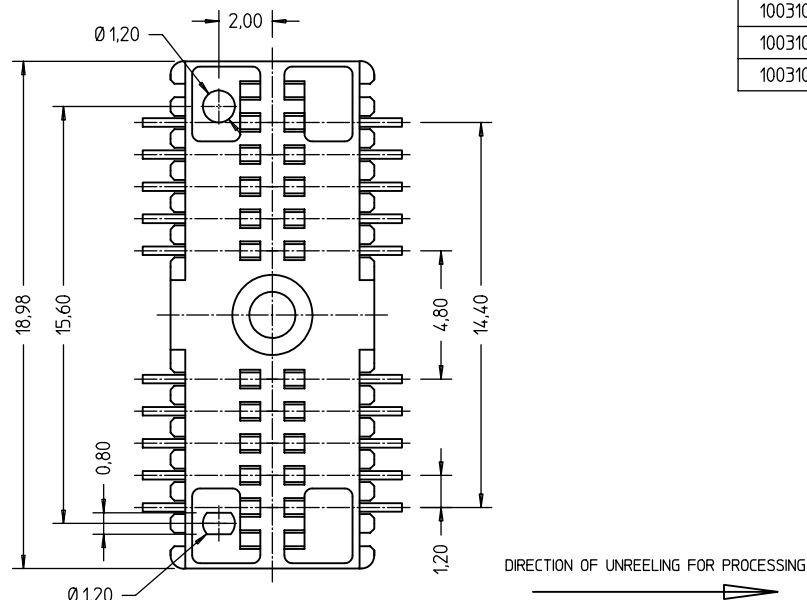
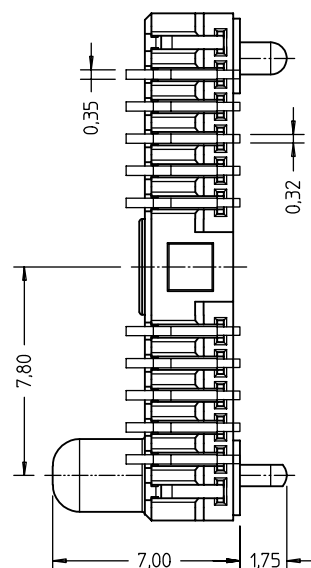
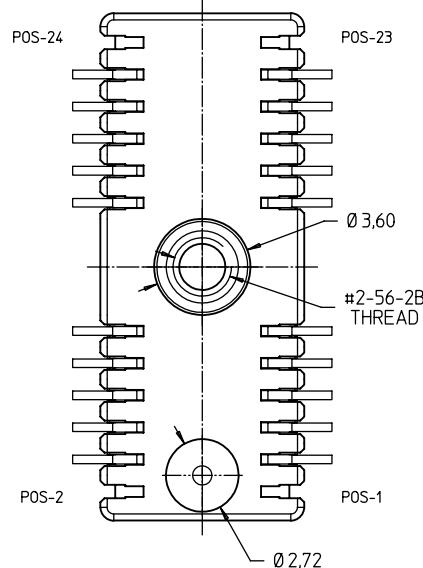
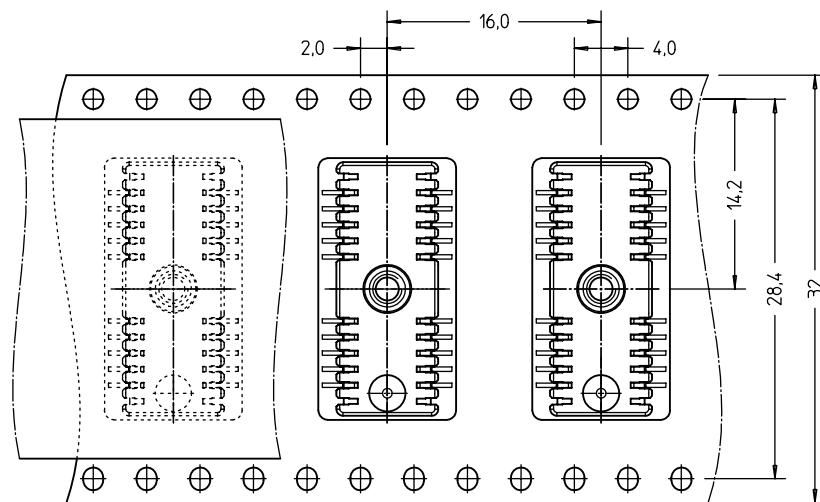


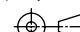


PRODUCT NO.	EMPTY POSITIONS
10031089-004LF	1, 2, 23, 24
10031089-005LF	23, 24
10031089-006LF	---



NOTES :

1. MATERIAL :
HOUSING : HIGH TEMPERATURE PLASTIC.
TERMINAL : COPPER ALLOY
PLATING : GOLD FLASH OVER NICKEL PLATING.
2. COMPRESSION FORCE : 110gf MIN AT 3.86mm FROM BASE.
3. DURABILITY : 15 CYCLES
4. THIS CUSTOMIZED PRODUCT IS MANUFACTURED ACCORDING TO THE CUSTOMER'S DRAWING AND SPECIFICATIONS. APPROACH MARKETING FOR ENQUIRIES.
5. ALL DIMENSIONS ARE FOR REFERENCE PURPOSE ONLY. DRAWING IS SUBJECTED TO CHANGE WITHOUT NOTICE.
6. PACKAGING : TAPE-AND-REEL
7. THIS PRODUCT MEETS EUROPEAN UNION DIRECTIVES AND OTHER COUNTRY REGULATIONS AS DESCRIBED IN GS-22-008. THE HOUSING WILL WITHSTAND EXPOSURE TO 260°C PEAK TEMPERATURE FOR 10 SECONDS IN A CONVECTION, INFRA-RED OR VAPOR PHASE REFLOW OVEN.



mat'l. code				surface ISO 1302 <input checked="" type="checkbox"/>		tolerance ISO 406 ISO 1101		projection 		product family									
ltr		ecn no		dr	date		tolerances unless otherwise specified						title						
A		S06-0215		LTS	23JUN06		angles		linear	---				COMPRESSION CONNECTOR, 20/22/24 CONTACTS					
							---					scale 5 : 1							
					dr	L T Soh		23JUN06				dwg no				sheet 1 of 1		size	
					engr	L T Soh		23JUN06				10031089						A3	
					chr	L T Soh		23JUN06											
					appd	JOEY NG		23JUN06											
sheet index		revision sheet																	