

TERMINAL STRIPS

Designers
Choice



STANDARD BINDING POST STRIPS

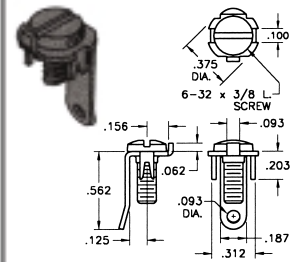
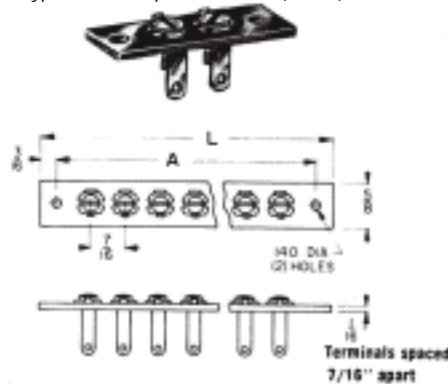
MATERIAL SPECIFICATIONS FOR ALL BINDING POST STRIPS

FIBERGLASS: Reinforced Polyester NEMA
Grade GPO-3 rated for 300°F. (155°C).

GEE: Glass Epoxy, MIL-I-24768/27
Type G-10, Temp. 300°F max. (155°C)

PBE: Paper base electrical, FED. LP-513
Type XP natural, Temp. 250°F max. (121°C)
Terminals supplied on these strips

1/16" THICK MATERIAL 5/8" WIDE					
XP PHENOLIC CAT. NO.	GLASS EPOXY CAT. NO.	FIBER- GLASS CAT. NO.	L LENGTH	A MTG. C'TRS.	NO. TERM
4187	4177	4167	1 1/4	7/8	1
4188	4178	4168	1 11/16	1 5/16	2
4189	4179	4169	2 1/8	1 3/4	3
4190	4180	4170	2 9/16	2 3/16	4
4191	4181	4171	3	2 5/8	5
4192	4182	4172	3 7/16	3 1/16	6
4193	4183	4173	3 7/8	3 1/2	7
4194	4184	4174	4 5/16	3 15/16	8
4195	4185	4175	4 3/4	4 3/8	9
4196	4186	4176	5 3/16	4 13/16	10

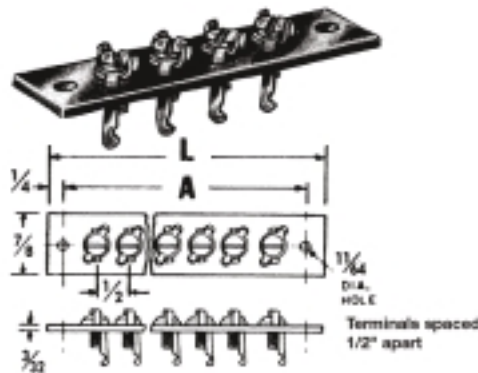


Terminal: .032 Steel, Tin Plated.
Screw: Brass - Nickel Plated.

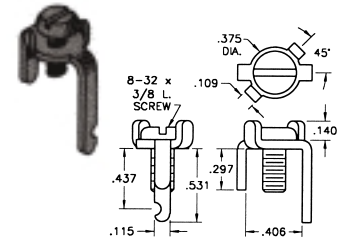
CAT. NO. 1248

HEAVY DUTY BINDING POST STRIPS

3/32" THICK MATERIAL 7/8" WIDE				
GLASS EPOXY CAT. NO.	FIBER- GLASS CAT. NO.	L LENGTH	A MTG. C'TRS.	NO. TERM
4147	4157	1 1/2	1	1
4148	4158	2	1 1/2	2
4149	4159	2 1/2	2	3
4150	4160	3	2 1/2	4
4151	4161	3 1/2	3	5
4152	4162	4	3 1/2	6
4153	4163	4 1/2	4	7
4154	4164	5	4 1/2	8
4155	4165	5 1/2	5	9
4156	4166	6	5 1/2	10



Terminals supplied on these strips



Terminal: .064 Brass-Tin Plated.
Screw: Brass - Tin Plated.

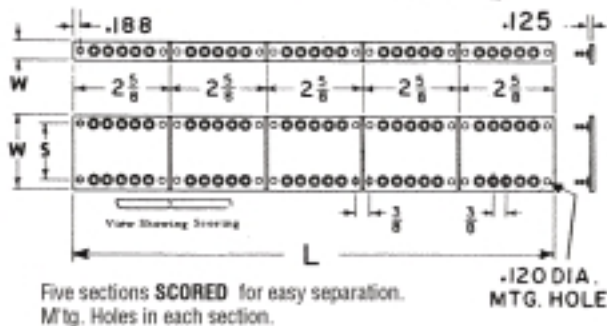
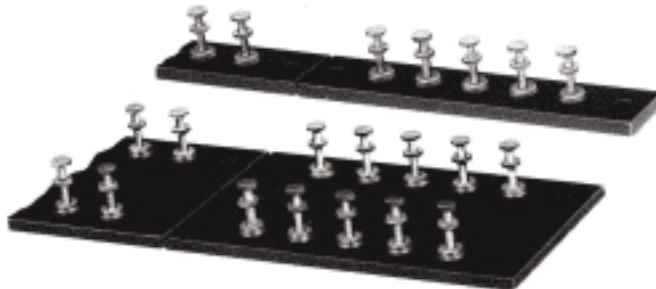
CAT. NO. 1209

MILITARY TERMINAL BOARDS

Terminal boards meet military specifications per MS27249.

SPECIFICATIONS:

Board Material: MIL-I-24768/27 TYPE GEE or TYPE GEB. 1/8" thick
Terminal Studs: SE12XC09 PER MIL-T-55155



W	S	L	NO. OF TERMS EACH SIDE	MATERIAL GEB CAT. NO.	MATERIAL GEE CAT. NO.
1/2	Single Row	2 5/8	5	MS27249-1B1	MS27249-1E1
		5 1/4	10	MS27249-1B2	MS27249-1E2
		7 7/8	15	MS27249-1B3	MS27249-1E3
		10 1/2	20	MS27249-1B4	MS27249-1E4
		13 1/8	25	MS27249-1B5	MS27249-1E5
1 1/2	1	2 5/8	5	MS27249-2B1	MS27249-2E1
		5 1/4	10	MS27249-2B2	MS27249-2E2
		7 7/8	15	MS27249-2B3	MS27249-2E3
		10 1/2	20	MS27249-2B4	MS27249-2E4
		13 1/8	25	MS27249-2B5	MS27249-2E5
2	1 1/2	2 5/8	5	MS27249-3B1	MS27249-3E1
		5 1/4	10	MS27249-3B2	MS27249-3E2
		7 7/8	15	MS27249-3B3	MS27249-3E3
		10 1/2	20	MS27249-3B4	MS27249-3E4
		13 1/8	25	MS27249-3B5	MS27249-3E5
2 1/2	2	2 5/8	5	MS27249-4B1	MS27249-4E1
		5 1/4	10	MS27249-4B2	MS27249-4E2
		7 7/8	15	MS27249-4B3	MS27249-4E3
		10 1/2	20	MS27249-4B4	MS27249-4E4
		13 1/8	25	MS27249-4B5	MS27249-4E5
3	2 1/2	2 5/8	5	MS27249-5B1	MS27249-5E1
		5 1/4	10	MS27249-5B2	MS27249-5E2
		7 7/8	15	MS27249-5B3	MS27249-5E3
		10 1/2	20	MS27249-5B4	MS27249-5E4
		13 1/8	25	MS27249-5B5	MS27249-5E5

Mouser Electronics

Authorized Distributor

Click to View Pricing, Inventory, Delivery & Lifecycle Information:

[Keystone Electronics:](#)

[MS272492B4](#)