

21000N series

Low profile toggle switches



DISTINCTIVE FEATURES

Threaded or plain bushing, with mounting plate

Low profile

Same height for single and double pole

Wave solderable only



ELECTRICAL SPECIFICATIONS

- Max. current/voltage rating with resistive load :
 - silver contacts (A) : 4 A 30 VDC
 - gold plated brass contacts (LD) : 100 mA 30 VDC
- Minimum load :
 - silver contacts (A) : 100 mA 10 V
 - gold plated brass contacts (LD) : 10 μ A 5 VDC - 10 mA 50 mV
- Initial contact resistance : 20 m Ω max.
- Insulation resistance : 1,000 M Ω min. at 500 VDC
- Dielectric strength :
 - 1,000 Vrms 50 Hz min. between terminals
 - 2,000 Vrms 50 Hz min. between poles
 - 2,000 Vrms 50 Hz min. between terminals and frame
- Electrical life at full load :
 - silver contacts (A) : 20,000 cycles
 - gold plated brass contacts (LD) : 50,000 cycles



GENERAL SPECIFICATIONS

- Low level or mechanical life : 100,000 cycles.
- Operating temperature : -40 °C to +85 °C (-40 °F to +185 °F)



MATERIALS

- Case and cover : PBT
- Actuator : brass, nickel plated
- Bushing : brass, nickel plated
- Contacts : **A** : silver, **LD** : brass, gold plated
- Terminal seal : epoxy

APEM products may be recycled at end-of-life for the re-claiming of valuable metal components.

The company reserves the right to change specifications without notice.

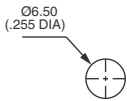


21000N series

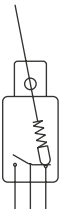
Low profile toggle switches



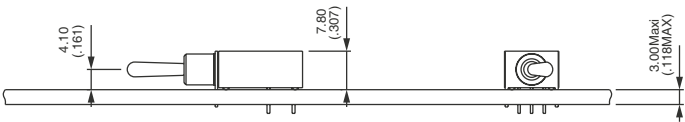
PANEL CUT-OUT



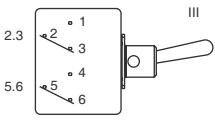
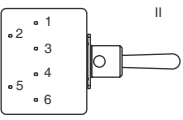
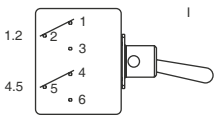
ELECTRICAL FUNCTIONS



PCB MOUNTING



POSITIONS AND CONNECTIONS

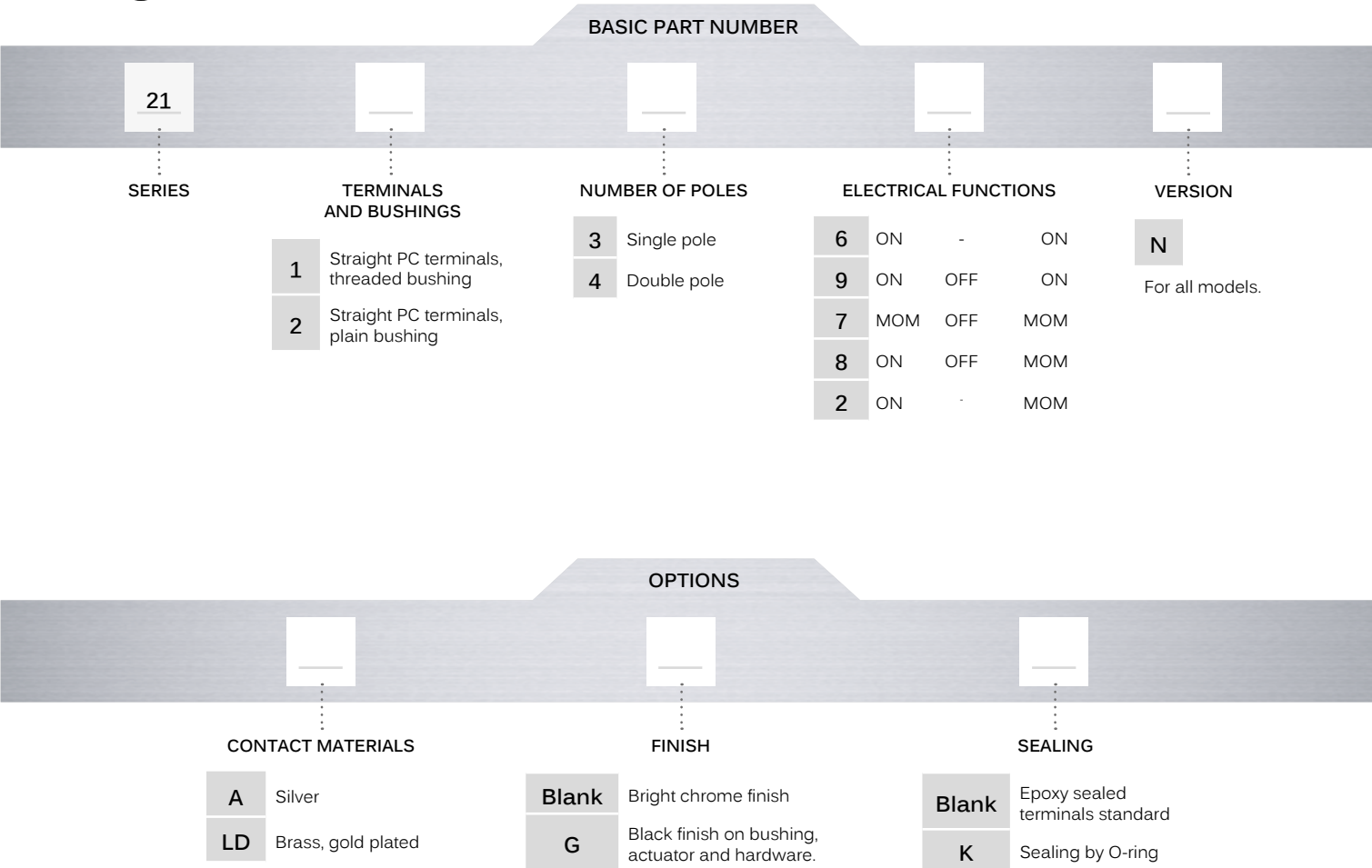
Bottom view			
Function 6	ON	-	ON
Function 9	ON	OFF	ON
Function 7	MOM	OFF	MOM
Function 8	ON	OFF	MOM
Function 2	ON	-	MOM

21000N series

Low profile toggle switches



BUILD YOUR PART NUMBER



ABOUT THIS SERIES

- On the following pages, you will find successively basic part numbers of switches and options in the same order as in above chart.
- Notice** : please note that not all combinations of above numbers are available. Refer to the following pages for further information.
 - Mounting accessories** : standard hardware supplied with all models with threaded bushing : 2 hex nuts 8 mm (.314) across flats. Standard and special hardware available is presented in the "Hardware" section of website.

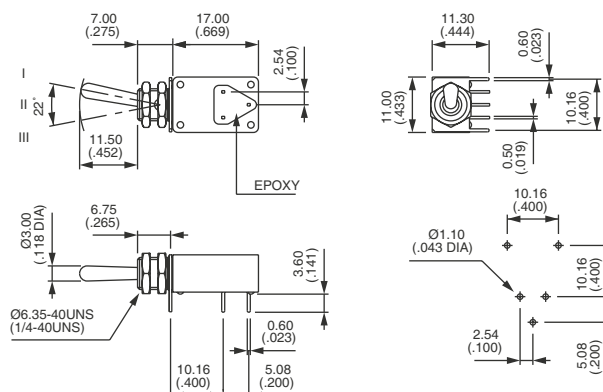
21000N series

Low profile toggle switches

THREADED BUSHING - SINGLE POLE



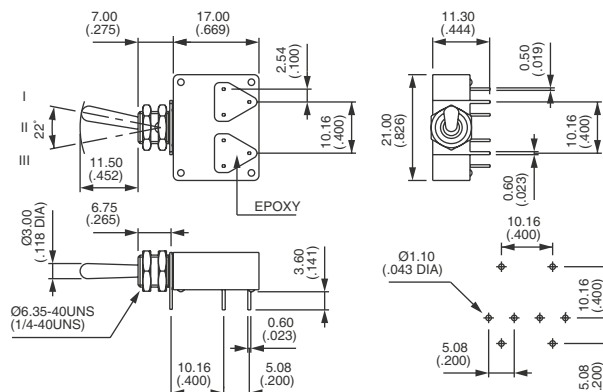
	III 2-3	II	I 1-2
21136N	ON	-	ON
21139N	ON	OFF	ON
21137N	MOM	OFF	MOM
21138N	ON	OFF	MOM
21132N	ON	-	MOM



THREADED BUSHING - DOUBLE POLE



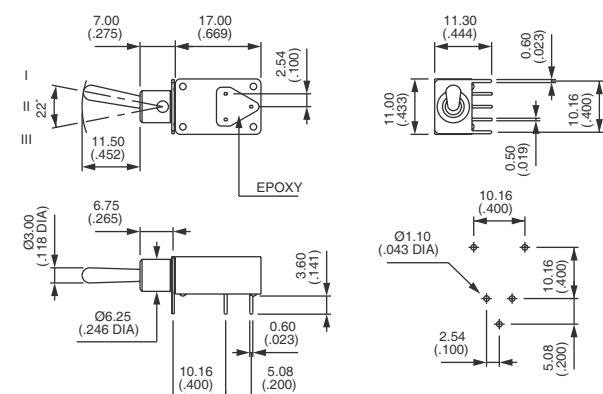
	III 2-3 5-6	II	I 1-2 4-5
21146N	ON	-	ON
21149N	ON	OFF	ON
21147N	MOM	OFF	MOM
21148N	ON	OFF	MOM
21142N	ON	-	MOM



PLAIN BUSHING - SINGLE POLE



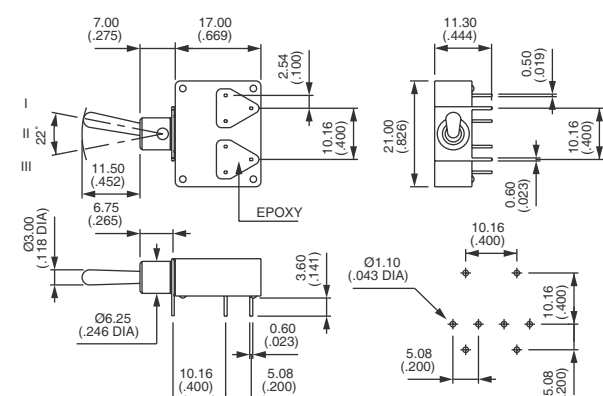
	III 2-3	II	I 1-2
21236N	ON	-	ON
21239N	ON	OFF	ON
21237N	MOM	OFF	MOM
21238N	ON	OFF	MOM
21232N	ON	-	MOM



PLAIN BUSHING - DOUBLE POLE



	III 2-3 5-6	II	I 1-2 4-5
21246N	ON	-	ON
21249N	ON	OFF	ON
21247N	MOM	OFF	MOM
21248N	ON	OFF	MOM
21242N	ON	-	MOM



21000N series

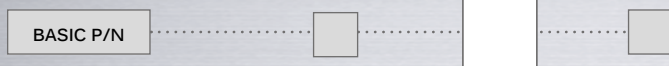
Low profile toggle switches

CONTACT MATERIALS



- A Silver
- LD Brass, gold plated

FINISH



- Blank Nickel plating on bushing, actuator and hardware.
- G Black finish on bushing, actuator and hardware.

SEALING



Epoxy sealed terminals are standard.

Blank No sealing except standard.

K Bushing internally sealed by one O-ring (version without washer U360). Protects the switch against water and dust.

