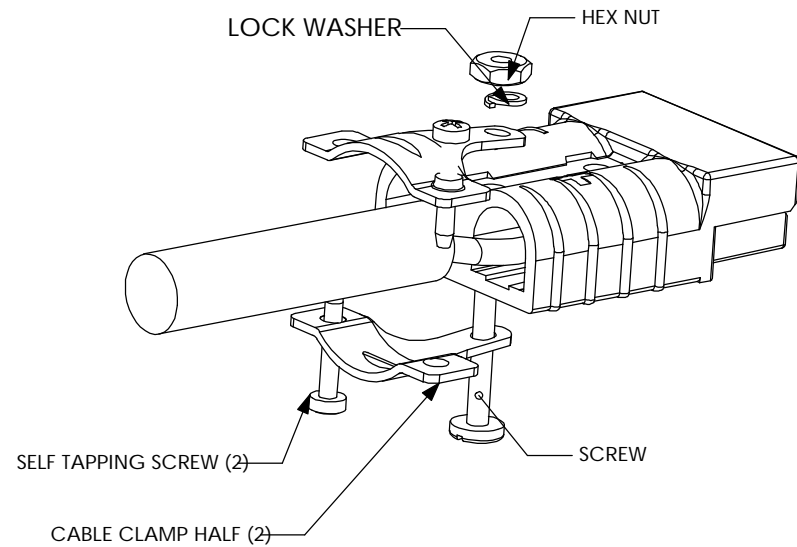
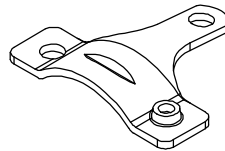
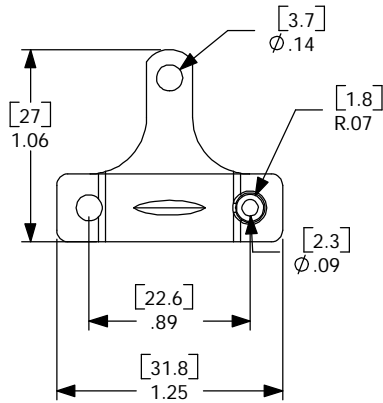


THE INFORMATION CONTAINED IN THIS DRAWING IS THE SOLE PROPERTY OF ANDERSON POWER PRODUCTS. ANY REPRODUCTION IN PART OR WHOLE WITHOUT THE WRITTEN PERMISSION OF ANDERSON POWER PRODUCTS IS PROHIBITED.

DATE	
BY:	
DESCRIPTION OF CHANGES	
REV.	



NOTES:

1. MATERIAL: STEEL, ZINC/YELLOW PLATE
2. HARDWARE KIT INCLUDES TWO SELF-TAPPING SCREWS, ONE LOCK WASHER, ONE SCREW AND ONE NUT
3. USE WITH TWIN CONDUCTOR CABLE

ITEM NO.	PART OR IDENTIFYING NO.	NOMENCLATURE OR DESCRIPTION		MATERIAL SPECIFICATION	QTY REQD	
COPYRIGHT2000 ANDERSON POWER PRODUCTS. ALL RIGHTS RESERVED. UNAUTHORIZED REPRODUCTION HEREBY PROHIBITED						
DIMENSIONS ARE IN INCHES DIMENSIONS IN PARENTHESES [] ARE IN MILLIMETERS TOLERANCES ARE: 2PL- ±.02 [±.5]		CAD GENERATED DRAWING, DO NOT MANUALLY UPDATE		ANDERSON POWER PRODUCTS CATALOG NUMBER 5905 SB50 TWIN CONDUCTOR CABLE CLAMP		
		APPROVALS	DATE			
		DRAWN CMS	1/26/00			
		CHECKED DJD	1/27/00			
MATERIALS: SEE NOTES		RESP ENG UFN	2/7/00	SIZE A	SPECIFICATION: 114219S1	
FINISH SEE NOTES		MFG ENG CHB	2/7/00			
DO NOT SCALE DRAWING		QUAL ENG RPO	2/8/00	SCALE NONE	CADFILES/01176	SHEET 1 OF 1

Mouser Electronics

Authorized Distributor

Click to View Pricing, Inventory, Delivery & Lifecycle Information:

[Anderson Power Products:](#)

[5905-BK](#)