

Actuator

31-
471.036



<https://eao.com/p/31-471.036>

Your product:



31-471.036 Actuator

FRONT

Front form:	round
Front bezel material:	Plastic
Front bezel colour:	Black
Front dimension:	Ø 18 mm

MOUNTING

Mounting cut-out:	Ø 16 mm
Design:	raised

OPERATING-/INDICATION PART

Lens illumination:	illuminative
--------------------	--------------

ELECTRICAL CHARACTERISTICS

Contacts:	2 NO
Standards:	According to EN/IEC 61058-1

MECHANICAL CHARACTERISTIC

Wire cross section:	Max. wire diameter 2 wires à 0.8 mm Max. wire cross-section of stranded cable 1 x 0.75 mm ²
Mechanical lifetime:	1 Mio. cycles of operation
Operating force:	3 N ... 3.5 N
Switching action:	Maintained
Tightening torque:	Fixing nut max. 0.5 Nm

Weight:	0.007 kg
Switching system:	Low-level element
Contact material:	Gold
Terminal:	Universal terminal, 2 x 0.5 mm
Operating Travel:	ca. 3 mm

AMBIENT CONDITION

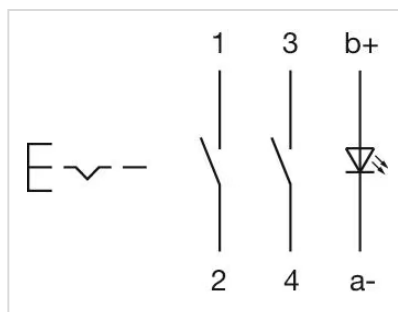
Operating temperature:	– 25 °C ... + 55 °C, mounted as a block, make sure the heat can escape freely
Storage temperature:	– 40 °C ... + 85 °C
IP Protection:	IP40 front side, IP67 with front protective cap
Climate resistance:	Standard condition according to IEC 60068-2-3 Changing condition according to IEC 60068-2-14

CERTIFICATE

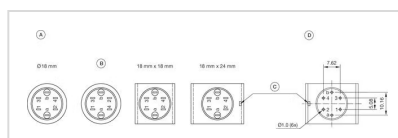
Conformities:	CE, UKCA, 2011 / 65 / EC (RoHS), 2014 / 35 / EU (LVD)
----------------------	---

OTHER

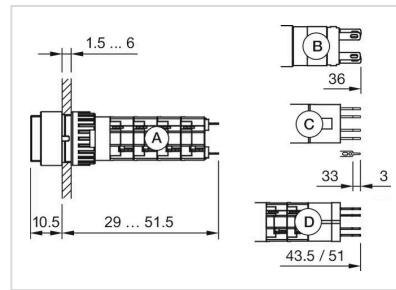
Housing colour:	Black
Short Description:	Actuator, Ø 16 mm, Ø 18 mm, illuminative, round, Black, Plastic, 2 NO, Maintained, Universal terminal, 2 x 0.5 mm
Internal size:	Ø 15,8 mm
max. number of switching elements:	1
Wiring diagrams:	



Component layouts:



Dimension drawings:



Mounting cut-outs:

