



Features:

- Glass Passivated Device
- Ideal for Surface Mounted Applications
- Low Leakage Current
- Metallurgically Bonded Construction

Mechanical Data:

- Case: JEDEC DO-213AB, Molded Plastic Over Passivated Chip
- Terminals: Solder Plated, Solderable per MIL-STD-750, Method 2026
- Polarity: Colour Band Denotes Cathode End
- Weight: 0.0046oz, 0.116g
- Mounting Position: Any

Maximum Ratings and Electrical Characteristics:

Ratings at 25°C ambient temperature unless otherwise specified.

Single phase, half wave, 60Hz, resistive or inductive load. For capacitive load, derate by 20%.

Characteristics	Symbol	DL4002-13-F	DL4004-13-F	Unit
Maximum recurrent peak reverse voltage	V_{RRM}	100	400	V
Maximum RMS voltage	V_{RMS}	70	280	V
Maximum DC blocking voltage	V_{DC}	100	400	V
Maximum average forward rectified current at $T_A=75^{\circ}C$	$I_{(AV)}$	1		A
Peak forward surge current 8.3ms single half-sine-wave superimposed on rated load (JEDEC method)	I_{FSM}	30		A
Maximum instantaneous forward voltage at 1A	V_F	1.1		V
Maximum reverse current at $T_A=25^{\circ}C$ at rated DC blocking voltage at $T_A=125^{\circ}C$	I_R	5 50		μA
Typical junction capacitance (Note 1)	C_J	15		pF
Typical thermal resistance (Note 2)	$R_{\theta JL}$	20		$^{\circ}C/W$
Typical thermal resistance (Note 3)	$R_{\theta JA}$	50		$^{\circ}C/W$
Operating and Storage junction temperature range	T_J, T_{STG}	- 55 to +150		$^{\circ}C$

FIG. 1 - TYPICAL FORWARD CURRENT DERATING CURVE

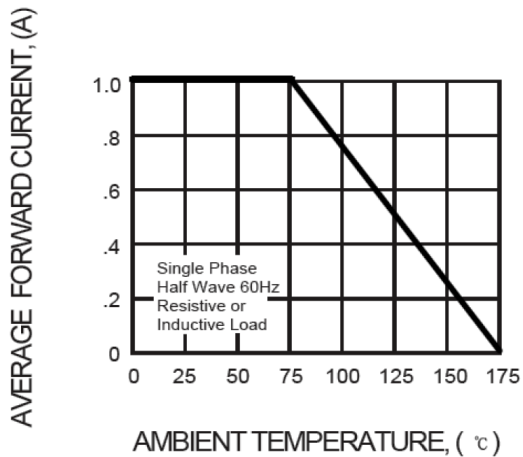


FIG. 2 - MAXIMUM NON-REPETITIVE FORWARD SURGE CURRENT

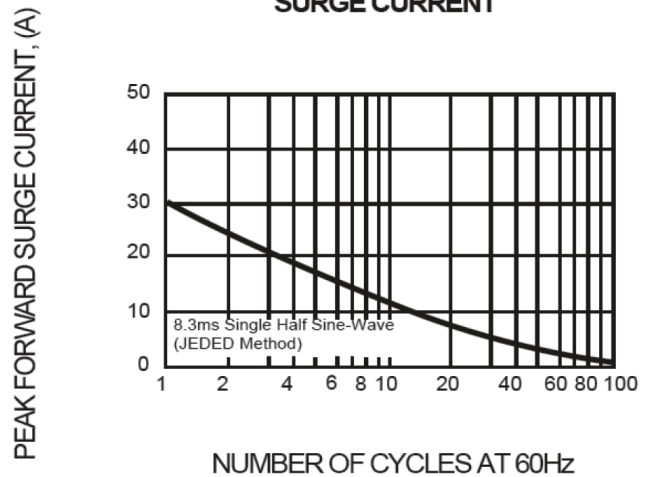


FIG. 3 - TYPICAL INSTANTANEOUS FORWARD CHARACTERISTICS

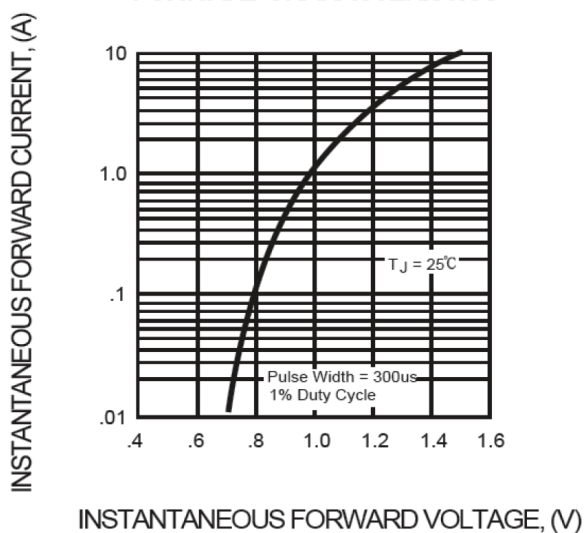


FIG. 4 - TYPICAL REVERSE CHARACTERISTICS

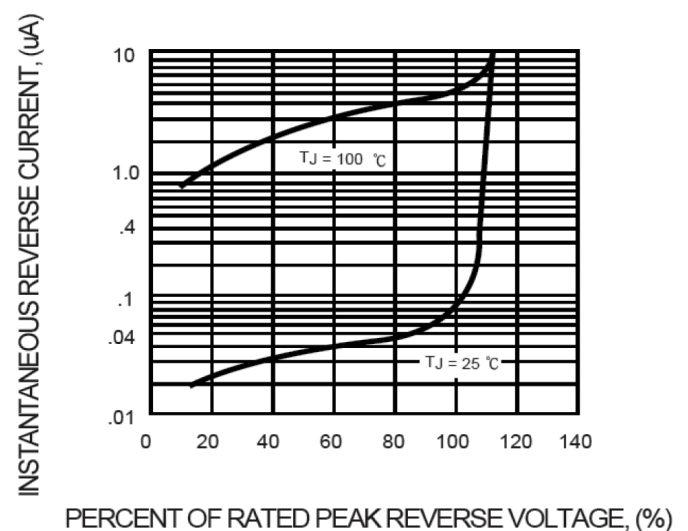
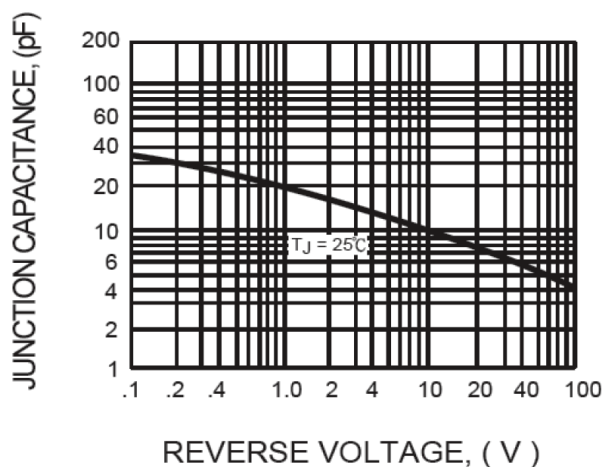
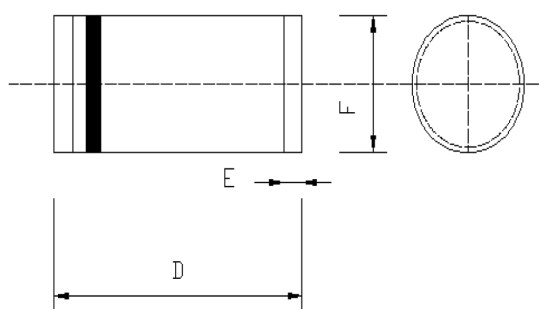


FIG. 5 - TYPICAL JUNCTION CAPACITANCE



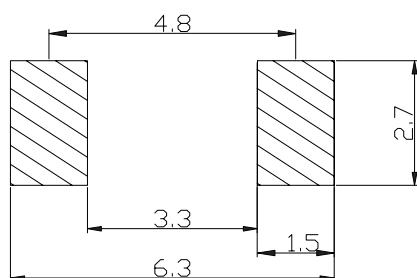
Package Outline:



DO-213AB		
Dim.	Min.	Max.
D	4.7	5.2
E	0.25	0.55
F	2.45	2.85

Dimensions : Millimetres

Soldering Footprint:



Dimensions : Millimetres

Package Information:

Device	Package	Shipping
DL4002-13-F & DL4004-13-F	DO-213AB	5,000 / Tape & Reel

Part Number Table

Description	Part Number
Surface Mount Rectifier	DL4002-13-F
	DL4004-13-F

Important Notice : This data sheet and its contents (the "Information") belong to the members of the Premier Farnell group of companies (the "Group") or are licensed to it. No licence is granted for the use of it other than for information purposes in connection with the products to which it relates. No licence of any intellectual property rights is granted. The Information is subject to change without notice and replaces all data sheets previously supplied. The Information supplied is believed to be accurate but the Group assumes no responsibility for its accuracy or completeness, any error in or omission from it or for any use made of it. Users of this data sheet should check for themselves the Information and the suitability of the products for their purpose and not make any assumptions based on information included or omitted. Liability for loss or damage resulting from any reliance on the Information or use of it (including liability resulting from negligence or where the Group was aware of the possibility of such loss or damage arising) is excluded. This will not operate to limit or restrict the Group's liability for death or personal injury resulting from its negligence. Multicomp is the registered trademark of the Group. © Premier Farnell plc 2012.