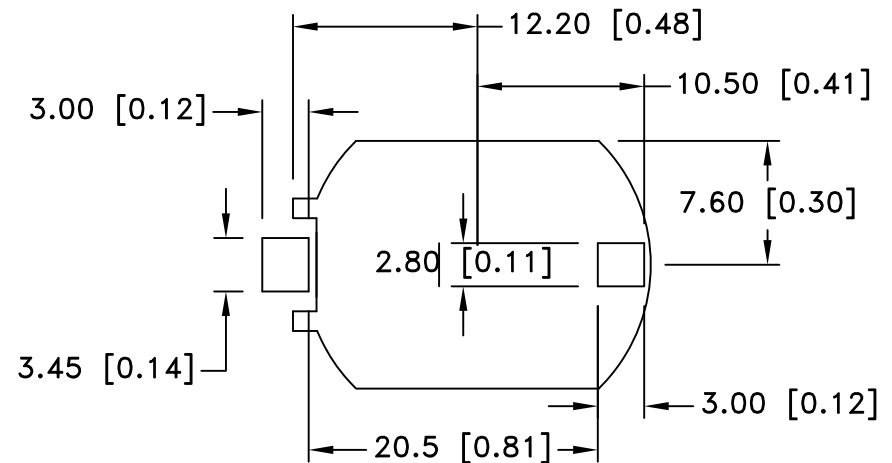
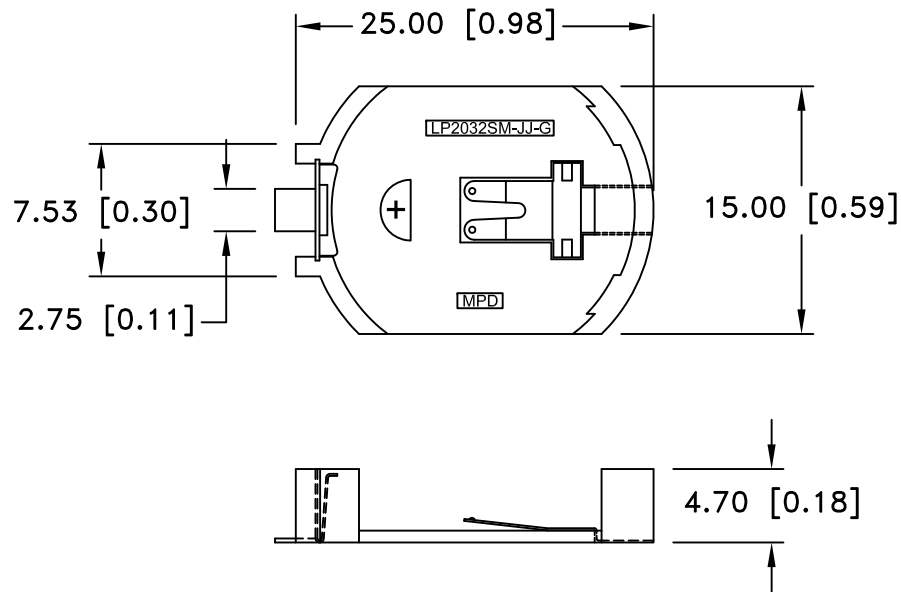


Date	SYM	REVISION RECORD	AUTH	DR.	CK.
12/06/13	A	Updated PCB layout	T.B.	B.S.	



PCB LAYOUT

SPECIFICATIONS:


- * Holder material- 30% glass reinforced Liquid Crystal Polymer resin, UL File No. E123598, UL94V-0
- * Color: White
- * Contacts : 0.020" thick Stainless steel 301, 3/4 hard , GOLD FLASH over nickel
- * Temperature range: -40°C to +280°C

Vibration Test: 10-50-10 Hz swept in 60 seconds

X,Y,Z direction: 1 hour each direction, No dislodgement of the cell or damage, No discontinuity over 10 micro-seconds

Shock Test: Half sine wave acceleration 150g. 6 m/s, 3 shock pulses each direction per axis, total of 18 pulses, No evidence of physical damage

ROHS COMPLIANT

Tolerance (Except as noted)	 Memory Protection Devices, Inc 200 Broad Hollow Road, Farmingdale, New York 11735		
decimal ±.5 (.020)			Scale Drawn By B.S. Approved By T.B.
Fractional ± .8 (.030)	Title SURFACE MOUNT BATTERY HOLDER FOR CR2032		
Angular ± 3°	Date 12/06/13	Drawing Number LP2032SM-JJ-GTR	