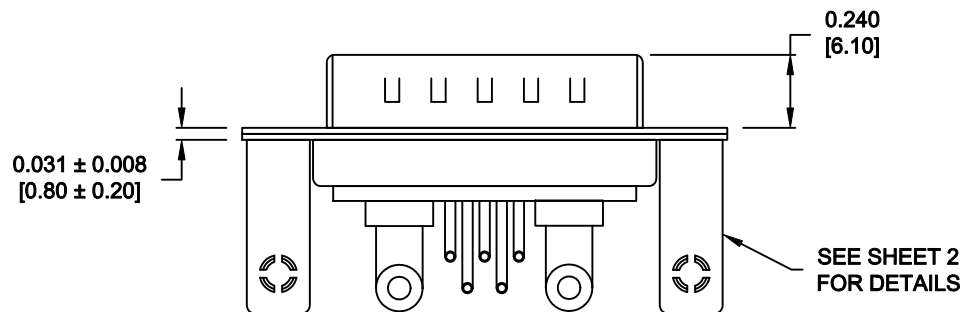
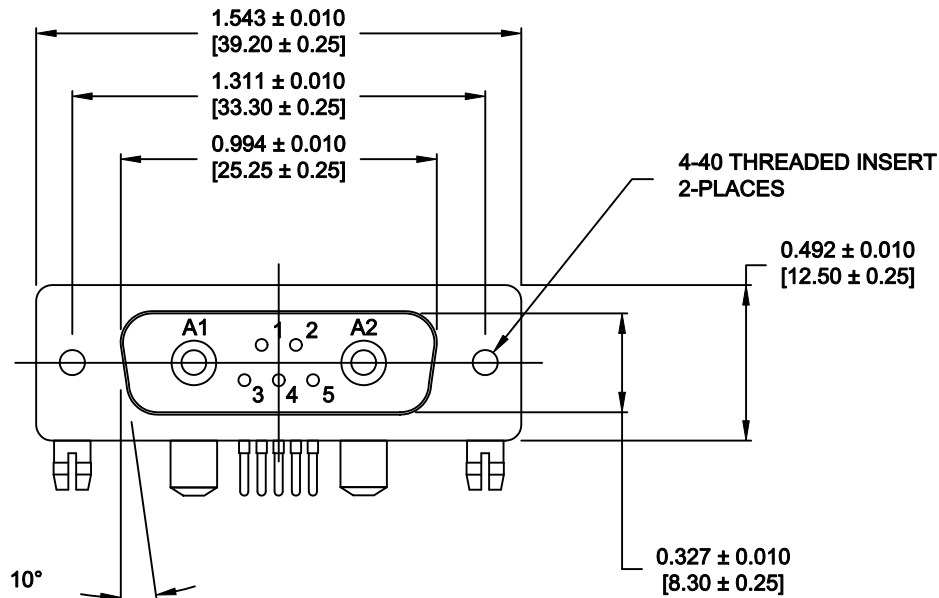


DESCRIPTION: POWER / SIGNAL - RIGHT ANGLE - MALE - MACHINED



SPECIFICATIONS:

**ELECTRICAL:**  
INSULATOR RESISTANCE: 5G OHMS Min.  
DIELECTRIC WITHSTANDING: 1,000VAC r.m.s.  
OPERATING TEMPERATURE: -55° C ~ +125° C  
POWER CONTACT RESISTANCE: 1.0 Milliohms Max.  
SIGNAL CONTACT RESISTANCE: 2.7 Milliohms Max.  
POWER PINS: 40 AMPS  
SIGNAL PINS: 5 AMPS

**MECHANICAL:**  
CONTACT INSERTION FORCE: 4.5 Kg Max.  
CONTACT SEPARATOR FORCE: 0.3Kg Min.


**MATERIALS:**  
CONTACTS: COPPER ALLOY  
INSULATOR: PBT UL94V-0 RATED, BLK  
230°C PROCESS TEMP.  
SHELL: STEEL  
BOARD LOCK: BRASS, NICKEL PLATED  
CINCHNUT: BRASS, NICKEL PLATED  
BRACKET: STEEL, NICKEL PLATED

**FINISH:**  
SHELL: NICKEL  
CONTACTS: FULL GOLD FLASH

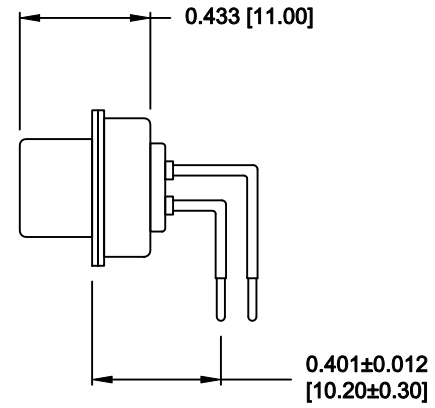
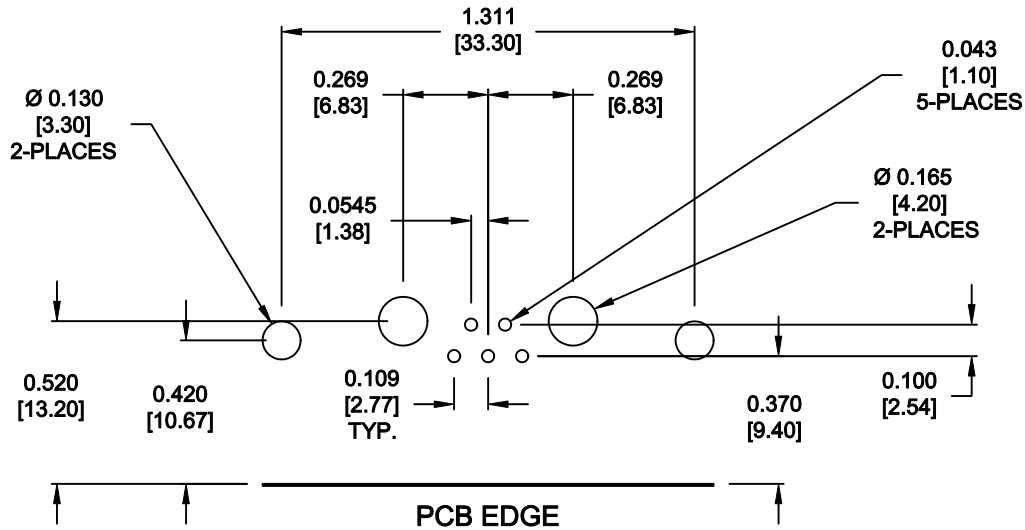
684M7W2103L461

46 = 4-40 INSERTS /  
BOARD LOCKS

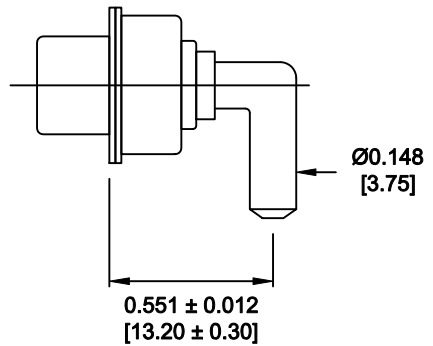
RoHS COMPLIANT

	THESE DRAWINGS AND SPECIFICATIONS ARE THE PROPERTY OF NorComp AND SHALL NOT BE REPRODUCED, COPIED OR USED AS THE BASIS FOR THE MANUFACTURE OR SALE OF APPARATUS WITHOUT WRITTEN PERMISSION.	DRAWN: P. JENKINS		DATE: 8-22-11		
		CHECKED:		DATE:		
	NorComp	SCALE: 1.5 = 1		SHEET 1 OF 2		REV 3
		DWG NO. 684M7W2103L461				

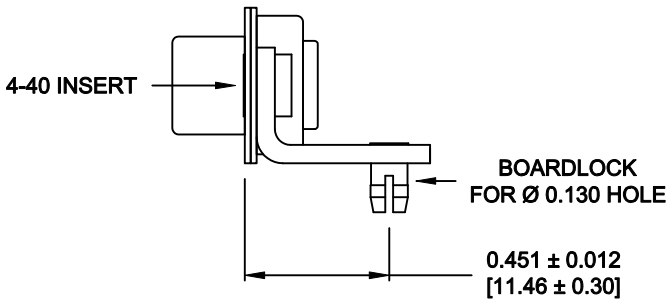
NOTE:  
POWER CONTACTS COME  
PRE-LOADED INTO INSULATORS



SIGNAL CONTACTS




40 AMP POWER CONTACT



MOUNTING HARDWARE

RoHS COMPLIANT

	THESE DRAWINGS AND SPECIFICATIONS ARE THE PROPERTY OF NorComp AND SHALL NOT BE REPRODUCED, COPIED OR USED AS THE BASIS FOR THE MANUFACTURE OR SALE OF APPARATUS WITHOUT WRITTEN PERMISSION.	DRAWN: <b>P. JENKINS</b>		DATE: <b>8-22-11</b>	
		CHECKED:		DATE:	
<b>NorComp</b>	SCALE: <b>1.5 = 1</b>		SHEET <b>2</b>		OF <b>2</b>
	DWG NO. <b>684M7W2103L461</b>		REV <b>3</b>		