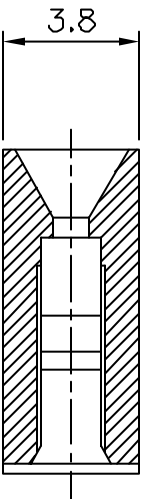



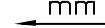

PRODUCT NB	NB OF POS	DIM "C"	DIM "C"
71030-102	1 x 2	4	7.8
71030-103	1 x 3	8	11.8

SECTION BB



NOTES:

1 - MATERIAL HOUSING: THERMOPLASTIC POLYESTER,
30% GLASS FILLED, COLOUR BLUE
FLAME RETARDANT PER UL-94 CATEGORY VO.

mat'l. code SEE NOTE 1				surface ISO 1302 ✓		tolerance ISO 406 ISO		projection 101 		product family DUBOX VCC																																																																																																																																																																																																																																																																																																																																																																																																																																																																																																																																																																																																																																																																																																																																																																																																																																																																																																																																																																																																																																																																																																																																																																																																																																																					
ltr	ecn no	dr	date	tolerances unless		otherwise specified			title SPECIAL HSG 4mm																																																																																																																																																																																																																																																																																																																																																																																																																																																																																																																																																																																																																																																																																																																																																																																																																																																																																																																																																																																																																																																																																																																																																																																																																																																						
A	F05-0232	DLE	05.08.09	angles	Linear	±0.13																																																																																																																																																																																																																																																																																																																																																																																																																																																																																																																																																																																																																																																																																																																																																																																																																																																																																																																																																																																																																																																																																																																																																																																																																																																									
B	F06-0224	DLE	06.07.07																																																																																																																																																																																																																																																																																																																																																																																																																																																																																																																																																																																																																																																																																																																																																																																																																																																																																																																																																																																																																																																																																																																																																																																																																																																												
				±2°																																																																																																																																																																																																																																																																																																																																																																																																																																																																																																																																																																																																																																																																																																																																																																																																																																																																																																																																																																																																																																																																																																																																																																																																																																																											
				dr	D LEGRAND		05.08.09		dwg no 71030																																																																																																																																																																																																																																																																																																																																																																																																																																																																																																																																																																																																																																																																																																																																																																																																																																																																																																																																																																																																																																																																																																																																																																																																																																																						
				engr	P NIZZI		05.08.09																																																																																																																																																																																																																																																																																																																																																																																																																																																																																																																																																																																																																																																																																																																																																																																																																																																																																																																																																																																																																																																																																																																																																																																																																																																								
				chr	P.NIZZI		05.08.09																																																																																																																																																																																																																																																																																																																																																																																																																																																																																																																																																																																																																																																																																																																																																																																																																																																																																																																																																																																																																																																																																																																																																																																																																																																								
				appd	P NZ		05.08.09																																																																																																																																																																																																																																																																																																																																																																																																																																																																																																																																																																																																																																																																																																																																																																																																																																																																																																																																																																																																																																																																																																																																																																																																																																																								
sheet index		revision sheet																	type CUSTOMER Drawing																																																																																																																																																																																																																																																																																																																																																																																																																																																																																																																																																																																																																																																																																																																																																																																																																																																																																																																																																																																																																																																																																																																																																																																																																																												</