

TERMINATIONS

SMA, up to 18 GHz, 2 Watts

SPECIFICATIONS:

Models: 3004M, 3004F, 3004MC, 3004FC

RoHS
Compliant

AEROFLEX
A passion for performance.

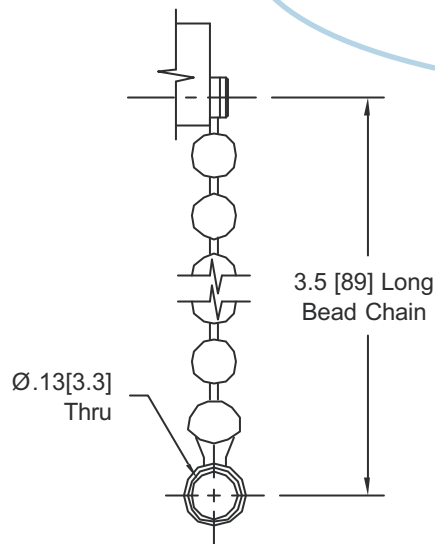
Electrical:

Frequency Range	DC - 18 GHz
Standard Freq. Values	6** & 18 GHz
VSWR	
DC - 4 GHz	1.15:1 Max.
4 - 8 GHz	1.20:1 Max.
8 - 12.4 GHz	1.25:1 Max.
12.4 - 18 GHz	1.30:1 Max.
Impedance	50 Ohms
Input Power	2 Watts Avg. @ +25°C Derated Linearly to 1 Watt @ +125°C
Peak Power	250 Watts Max. (5uSec Pulse, .05% Duty Cycle)
Temperature Coefficient	±250 ppm/°C
Operating Temp Range	-65°C to +125°C

Mechanical:

SMA Connectors	Passivated Stainless Steel
Mates with MIL-STD-348	
Conductors	Gold Plated Beryllium Copper
Bead Chain	Passivated Stainless Steel

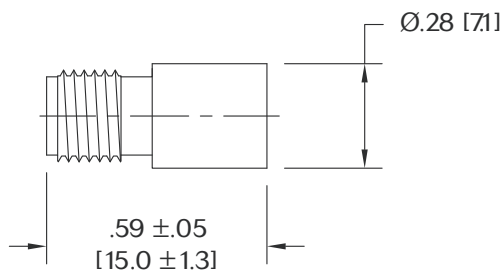
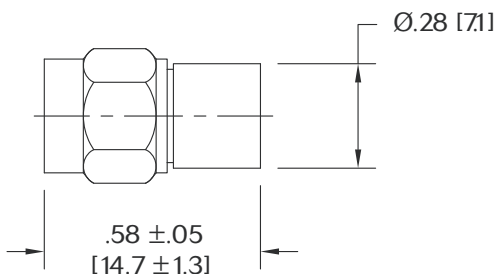
**For DC - 6 GHz Units add -067 to the Model Number



CHAIN DETAIL

Model Number: **3004M**
SMA Male Connector

Model Number: **3004F**
SMA Female Connector



HOW TO ORDER:

Model Number: **3004XY-XXX**

Connector Configuration	Frequency Range
M = Male	= DC - 18 GHz
F = Female	067 = DC - 6 GHz
Style	
= No Chain	
C = Chain Included	

Ordering Examples:

Model Number: **3004MC**
DC - 18 GHz; SMA Male; Chain Included

Model Number: **3004F-067**
DC - 6 GHz; SMA Female; No Chain

Model Number: **3004M**
DC - 18 GHz; SMA Male; No Chain

Note: Dimensions in Brackets are Expressed in Millimeters and are for Reference Only.
Design specifications are subject to change without notice.
Contact factory for technical specifications before purchasing or use.

3004: REV L

AEROFLEX
INMET

Aeroflex / Inmet, Inc. 300 Dino Drive, Ann Arbor, MI 48103 • U.S.A.
888-244-6638 or 734-426-5553 • FAX: 734-426-5557
www.aeroflex.com/inmet • inmet-sales@eroflex.com