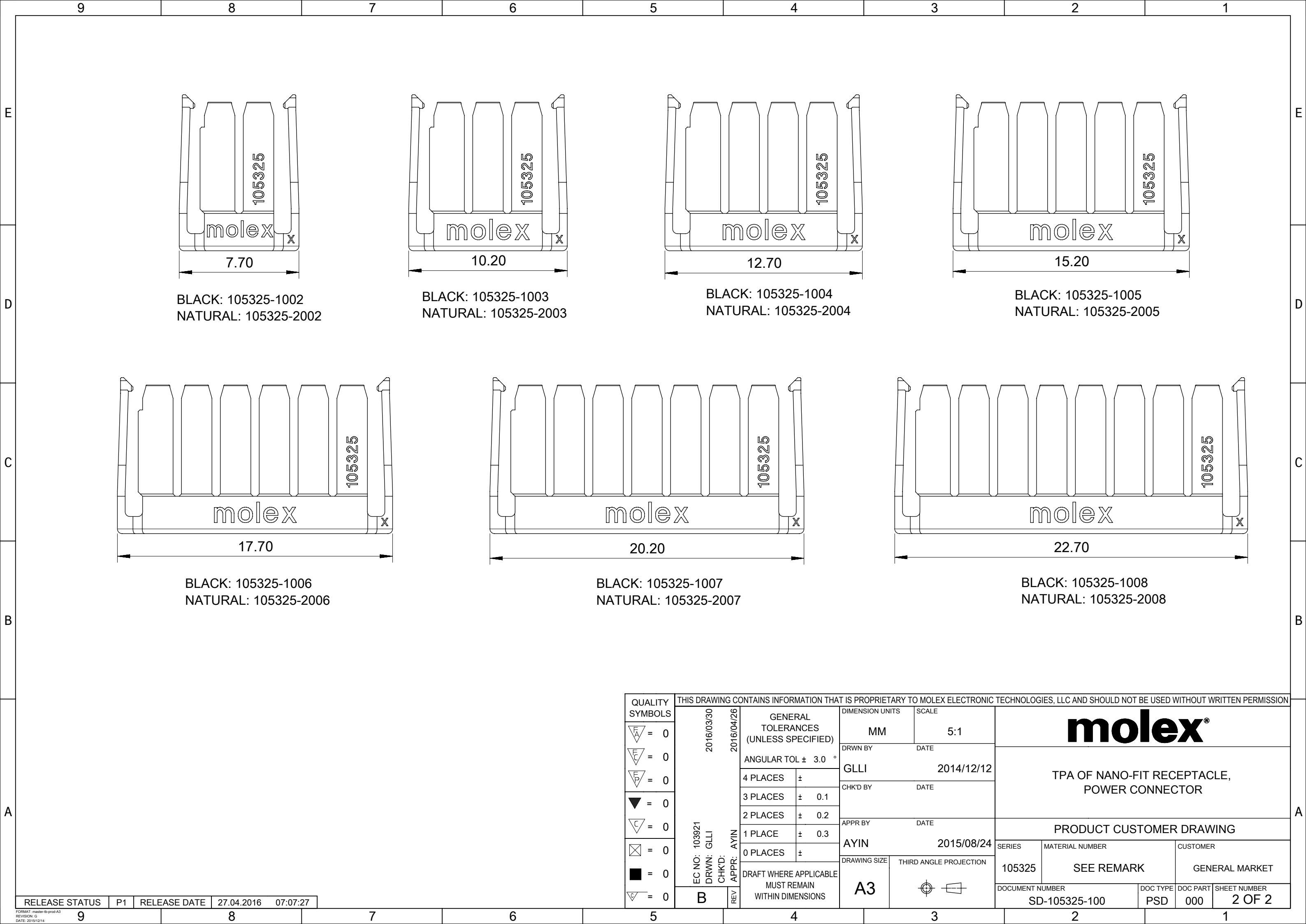


- NOTES:
1. MATERIAL: PA4T, 30% GLASS FILLED, UL-94V-0.
 2. PRODUCT SPECIFICATION: PS-105300-100.
 3. PACKAGE SPECIFICATION: BAG, PK-105325-100.
 4. THE COMPONENT COMPLIANT TO RoHS DIRECTIVE 2011/65/EU AND ELV DIRECTIVE 2000/53/EC.
 5. PRODUCT MATES WITH SERIES OF 105307 AND 105308 (RECEPTACLE).
 6. PARTS CONFORM TO CLASS 'B' REQUIREMENTS OF COSMETIC SPECIFICATION PS-45499-002.

RELEASE STATUS		RELEASE DATE	07:07:27
----------------	--	--------------	----------

THIS DRAWING CONTAINS INFORMATION THAT IS PROPRIETARY TO MOLEX ELECTRONIC TECHNOLOGIES, LLC AND SHOULD NOT BE USED WITHOUT WRITTEN PERMISSION																
QUALITY SYMBOLS			2016/03/30 2016/04/26 EC NO: 103921 DRWN: GLLI CHK'D: REV APPR: AYIN	GENERAL TOLERANCES (UNLESS SPECIFIED)	DIMENSION UNITS		SCALE		<div>molex®</div> TPA OF NANO-FIT RECEPTACLE, POWER CONNECTOR							
<div>FA = 0</div> <div>FC = 0</div> <div>FP = 0</div> <div>▽ = 0</div> <div>CA = 0</div> <div>☒ = 0</div> <div>■ = 0</div> <div>∠ = 0</div>					MM		5:1									
					ANGULAR TOL ± 3.0 °		DRWN BY		DATE		PRODUCT CUSTOMER DRAWING					
					4 PLACES ±		GLLI		2014/12/12							
					3 PLACES ± 0.1		CHK'D BY		DATE		SERIES MATERIAL NUMBER CUSTOMER					
					2 PLACES ± 0.2		APPR BY		DATE							
					1 PLACE ± 0.3		AYIN		2015/08/24		105325		SEE SHEET 2		GENERAL MARKET	
					0 PLACES ±		DRAWING SIZE		THIRD ANGLE PROJECTION							
					DRAFT WHERE APPLICABLE MUST REMAIN WITHIN DIMENSIONS		A3				DOCUMENT NUMBER		DOC TYPE		DOC PART SHEET NUMBER	
											SD-105325-100		PSD		000 1 OF 2	



BLACK: 105325-1002
NATURAL: 105325-2002

BLACK: 105325-1003
NATURAL: 105325-2003

BLACK: 105325-1004
NATURAL: 105325-2004

BLACK: 105325-1005
NATURAL: 105325-2005

BLACK: 105325-1006
NATURAL: 105325-2006

BLACK: 105325-1007
NATURAL: 105325-2007

BLACK: 105325-1008
NATURAL: 105325-2008

THIS DRAWING CONTAINS INFORMATION THAT IS PROPRIETARY TO MOLEX ELECTRONIC TECHNOLOGIES, LLC AND SHOULD NOT BE USED WITHOUT WRITTEN PERMISSION																	
QUALITY SYMBOLS		2016/03/30	2016/04/26	GENERAL TOLERANCES (UNLESS SPECIFIED)		DIMENSION UNITS		SCALE		<div>molex®</div> <div>TPA OF NANO-FIT RECEPTACLE, POWER CONNECTOR</div>							
<div><div><div></div></div><div>= 0</div></div>						MM		5:1									
<div><div><div></div></div><div>= 0</div></div>						DRWN BY		DATE									
<div><div><div></div></div><div>= 0</div></div>						GLLI		2014/12/12									
<div><div><div></div></div><div>= 0</div></div>				4 PLACES		±		CHK'D BY		DATE		PRODUCT CUSTOMER DRAWING					
<div><div><div></div></div><div>= 0</div></div>				3 PLACES		± 0.1		APPR BY		DATE							
<div><div><div></div></div><div>= 0</div></div>				2 PLACES		± 0.2		AYIN		2015/08/24							
<div><div><div></div></div><div>= 0</div></div>				1 PLACE		± 0.3		DRAWING SIZE		THIRD ANGLE PROJECTION							SERIES
<div><div><div></div></div><div>= 0</div></div>				0 PLACES		±		A3		<div><div></div><div></div></div>		105325		SEE REMARK		GENERAL MARKET	
<div><div><div></div></div><div>= 0</div></div>				DRAFT WHERE APPLICABLE MUST REMAIN WITHIN DIMENSIONS		DOCUMENT NUMBER						DOC TYPE		DOC PART		SHEET NUMBER	
<div><div><div></div></div><div>= 0</div></div>		B		SD-105325-100		PSD						000		2 OF 2			
<div><div><div></div></div><div>= 0</div></div>				REV													