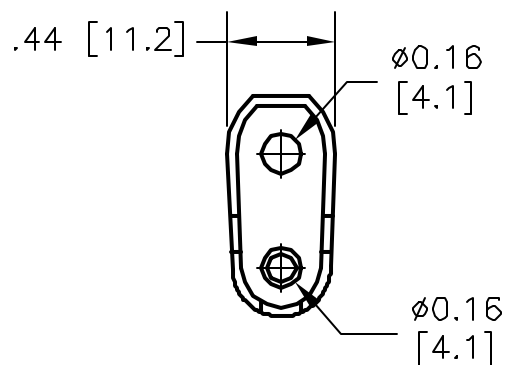
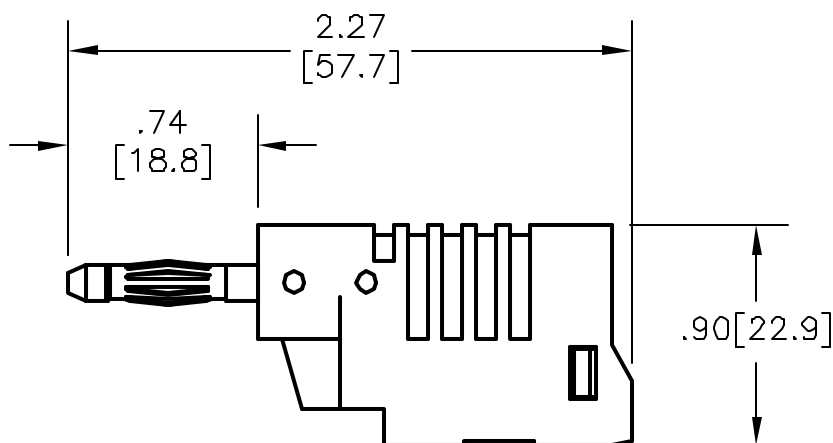
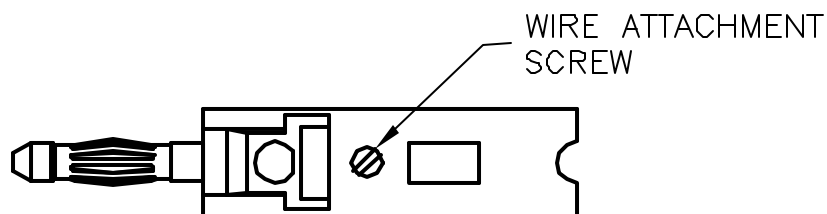


ALL RIGHTS RESERVED. NO PORTION OF THIS PUBLICATION, WHETHER IN WHOLE OR IN PART CAN BE REPRODUCED WITHOUT THE EXPRESS WRITTEN CONSENT OF SPC TECHNOLOGY.

REVISIONS				DOC. NO. SPC-F004 * Effective: 12/21/98 * DCP No: 680					
DCP #	REV	DESCRIPTION	DRAWN	DATE	CHECKD	DATE	APPRVD	DATE	
170	A	RELEASED	HYD	1/19/00	JC	1/28/00	DJC	4/5/00	



WIRE ACCESS
HOLE



SPECIFICATIONS:

1. DO-IT-YOURSELF, Ø4mm
STACKING BANANA PLUG, SCREW ATTACHMENT.
2. INSULATOR BODY: POLYACETAL
3. PLUG BODY: BRASS, NICKEL PLATED
4. CONTACT SPRING: BECU, NICKEL PLATED
5. VOLTAGE: 500V
6. CURRENT: 36A MAX.
7. TEMPERATURE: -20°C TO +80°C
8. CONDUCTOR: SIZE Ø.090 (12AWG)
9. INSULATION: Ø.156
10. STRIP LENGTH: .25 (6.4)

SPC-F004.DWG

DISCLAIMER:
ALL STATEMENTS AND TECHNICAL INFORMATION CONTAINED HEREIN ARE BASED UPON INFORMATION AND/OR TESTS WE BELIEVE TO BE ACCURATE AND RELIABLE. SINCE CONDITIONS OF USE ARE BEYOND OUR CONTROL, THE USER SHALL DETERMINE THE SUITABILITY OF THE PRODUCT FOR THE INTENDED USE AND ASSUME ALL RISK AND LIABILITY WHATSOEVER IN CONNECTION THEREWITH.



SPC TECHNOLOGY

Tolerances Unless
Otherwise Specified
Fractions $\pm 1/32$
Decimals
.XX $\pm .02$
.XXX $\pm .005$

DRAWN BY:	DATE:
HISHAM QDISH	1/19/00
CHECKED BY:	DATE:
JOHN COLE	1/28/00
APPROVED BY:	DATE:
DANIEL CAREY	4/5/00

DRAWING TITLE:
STACKING PLUG, SCREW ATTACHMENT, RED

SIZE	DWG. NO.	ELECTRONIC FILE	REV
A	2294	92N4656.DWG	A
SCALE: NTS		U.O.M.: INCHES [mm]	SHEET: 1 OF 1