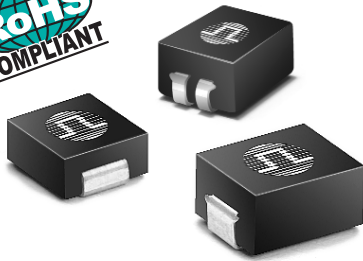


SMT POWER INDUCTORS

Power Beads - Volta 1 & 2 Series



- Height: 3.2mm and 4.5mm Max
- Footprint: 7.0 x 6.4mm Max and 8.9 x 6.4mm Max
- Current Rating: up to 16A
- Inductance Range: 0.1 μ H to 0.6 μ H
- Frequency Range: up to 2MHz

Electrical Specifications @ 25°C — Operating Temperature -40°C to +130°C

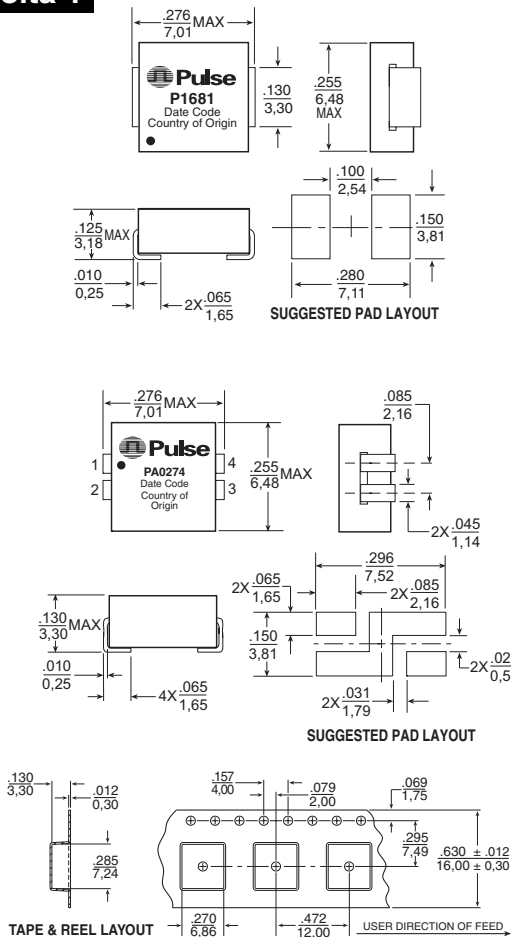
Part ^{5,6} Number	Inductance @Irated ¹ (nH ± 20%)	Irated ¹ (ADC)	DCR (mΩ)		Inductance @0A _{dc} (nH ± 20%)	Saturation Current ² (ADC)		Heating ³ Current (A)	Trise ⁴ Factor K0	Core Loss Factor ⁴	
			TYP	MAX		25°C	100°C			K1	K2
VOLTA 1											
P1681	95	15	0.31	0.39	100	18	16.2	15	1.0032	.00319	.07381
PA0274	475*	6.0	1.60	1.8*	700	7	4.8	12	1.4000	.00638	.24632
VOLTA 2											
PA0229	92	16	0.68	0.80	100	36	30	16	2.2458	.00638	.03975
P2005	142.5	15	0.45	0.56	150	18	16.2	15	2.2458	.00638	.05961
P2004	190	15	0.45	0.56	200	16.8	15.1	15	2.2458	.00638	.07949
PA0277	600*	10.7	2.3	2.53*	700	12.6	8.0	10.7	2.0400	.01276	.13196

* DCR and Inductance rating for indicated parts is for both windings tied in series.

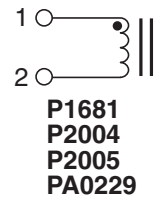
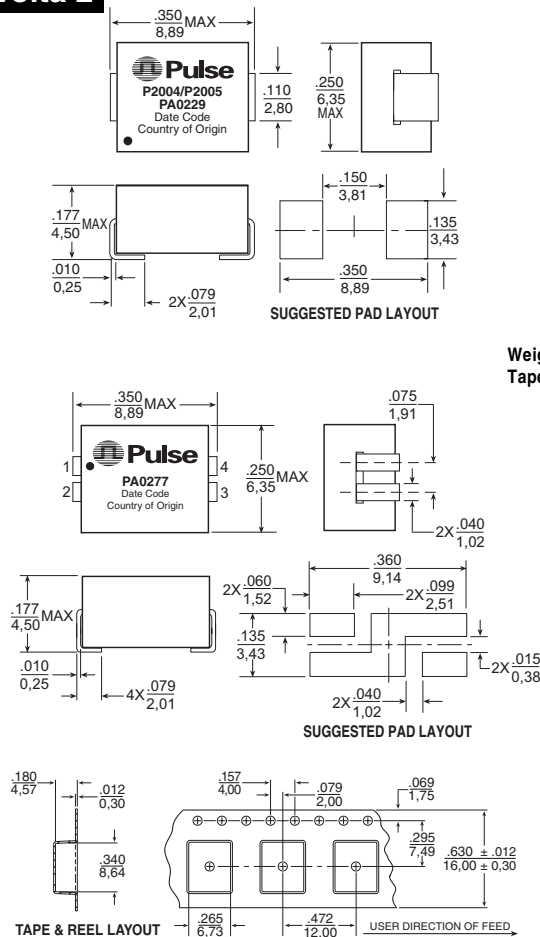
Mechanicals

Schematic

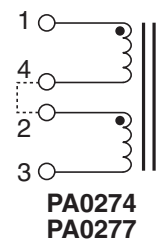
Volta 1



Volta 2



Volta 1 Volta 2
Weight.....0.464 grams.....0.945 grams
Tape & Reel1500/reel.....1000/reel



Dimensions: Inches
mm
Unless otherwise specified,
all tolerances are \pm .010
 .025

SMT POWER INDUCTORS

Power Beads - Volta 1 & 2 Series



Notes from Tables

1. The rated current as listed is either the saturation current or the heating current depending on which value is lower.
2. The saturation current is the current which causes the inductance to drop by 10% at the stated ambient temperatures (-40°C, 25°C, 125°C). This current is determined by placing the component in the specified ambient environment and applying a short duration pulse current (to eliminate self-heating effects) to the component.
3. The heating current is the DC current which causes the temperature of the part to increase by approximately 30°C. This current is determined by mounting the component on a PCB with .25" wide, 3 oz. equivalent copper traces, and applying the current to the device for 30 minutes.
4. In high volt*time applications, additional heating in the component can occur due to core losses in the inductor which may necessitate derating the current in order to limit the temperature rise of the component. In order to determine the approximate total losses (or temperature rise) for a given application both copper losses and core losses should be taken into account.

5. Optional Tape & Reel packaging can be ordered by adding a "T" suffix to the part number, (i.e. PA0274T).
6. To order RoHS compliant part, add the suffix "NL" to the part number (i.e. PA0274 becomes PA0274NL and PA0274T becomes PA0274NLT).

Estimated Temperature Rise:

$$Trise = \left[\frac{Coreloss (mW) + Copper Loss (mW)}{K0} \right]^{.833} (^\circ C)$$

$$Coreloss = KI * (Fsw(kHz))^{1.6688} * (K2 * dI)^{2.17} (mW)$$

$$Copper Loss = Irms^2 * DCR(m\Omega) (mW)$$

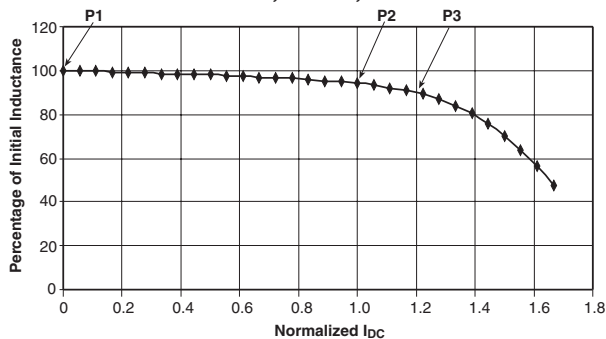
$$Irms = \left[IDC^2 + \left[\frac{dI}{12} \right]^2 \right]^{1/2} (Arms)$$

$$Fsw(kHz) = \text{switching frequency (kHz)}$$

$$dI = \text{delta I across the component (A)}$$

The temperature of the component (ambient temperature + temperature rise) should be within the listed operating temperature range.

Inductance vs Current Characteristics
P1681, P2005, P2004



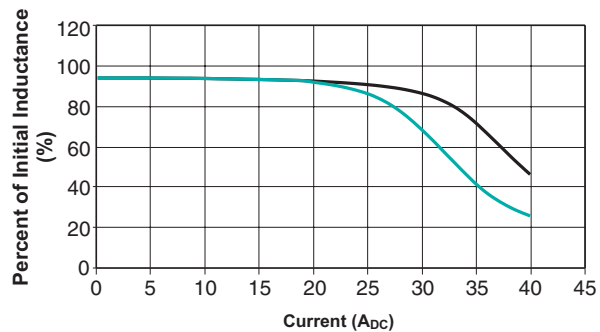
P1 - Initial Inductance, Lo (.1VRMS, 1MHz, 0ADC, 25°C)

P2 - Inductance (typically 95% Lo) at Rated IDC.

P3 - Inductance (typically 90% Lo) at IPK.

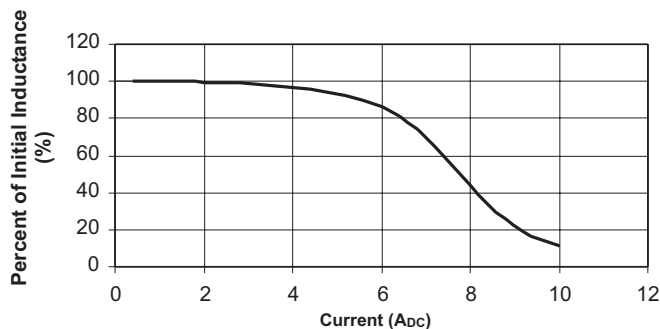
—◆— Normalized Inductance

PA0229 Inductance vs. DC Current at 25°C

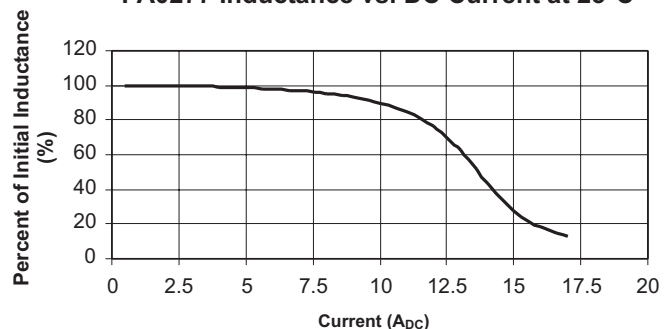


— 25° — 100°

PA0274 Inductance vs. DC Current at 25°C



PA0277 Inductance vs. DC Current at 25°C



For More Information:

UNITED STATES (Worldwide)

12220 World Trade Drive
San Diego, CA 92128
U.S.A.
<http://www.pulseeng.com>
TEL: 858 674 8100
FAX: 858 674 8262

UNITED KINGDOM (Northern Europe)

3 Huxley Road
Surrey Research Park
Guildford, Surrey GU2 5RE
United Kingdom
TEL: 44 1483 401700
FAX: 44 1483 401701

FRANCE (Southern Europe)

Zone Industrielle
F-39270
Orgelet
France
TEL: 33 3 84 35 04 04
FAX: 33 3 84 25 46 41

SINGAPORE (Southern Asia)

150 Kampong Ampat
#07-01/02
KA Centre
Singapore 368324
TEL: 65 6287 8998
FAX: 65 6280 0080

TAIWAN, R.O.C. (Northern Asia)

3F-4, No. 81, Sec. 1
HsinTai Wu Road
Hsi-Chih, Taipei Hsien
Taiwan, R.O.C.
Tel: 886 2 2698 0228
FAX: 886 2 2698 0948

HONG KONG (China/Hong Kong)

Unit 11, 11/F
Wah Lai Industrial Centre
10-14 Kwei Tei Street,
Fotan, Shatin, Hong Kong
TEL: 852 2788 6588
FAX: 852 2776 1055

DISTRIBUTOR

Performance warranty of products offered on this data sheet is limited to the parameters specified. Data is subject to change without notice. Other brand and product names mentioned herein may be trademarks or registered trademarks of their respective owners.